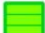








New Gisborne

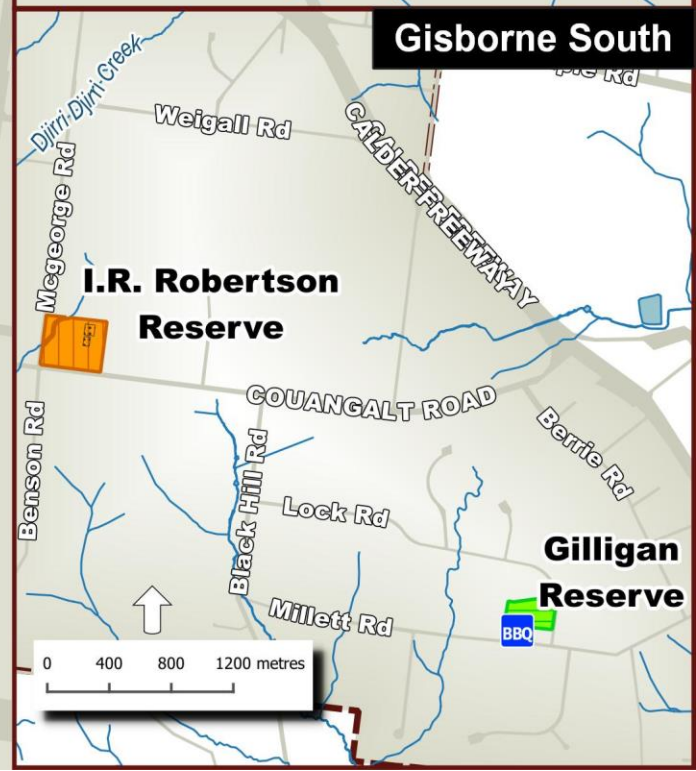
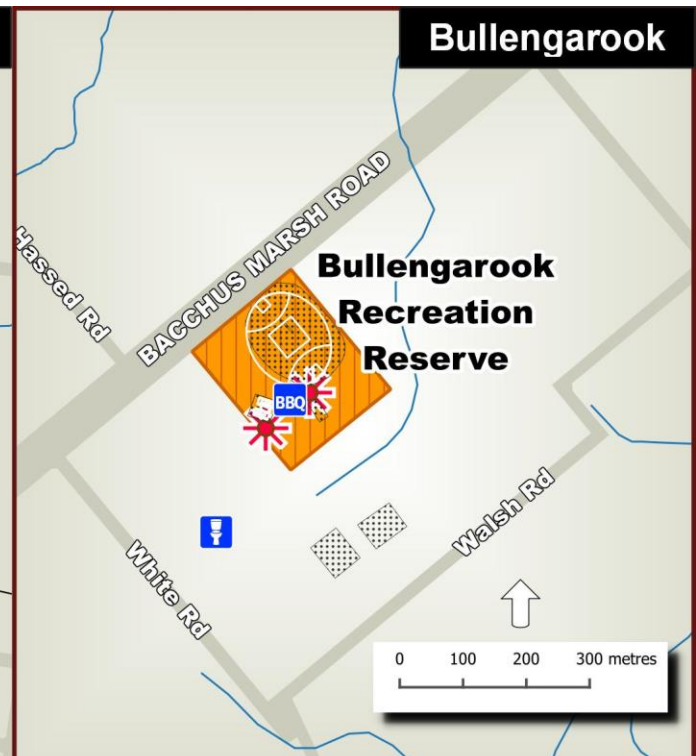
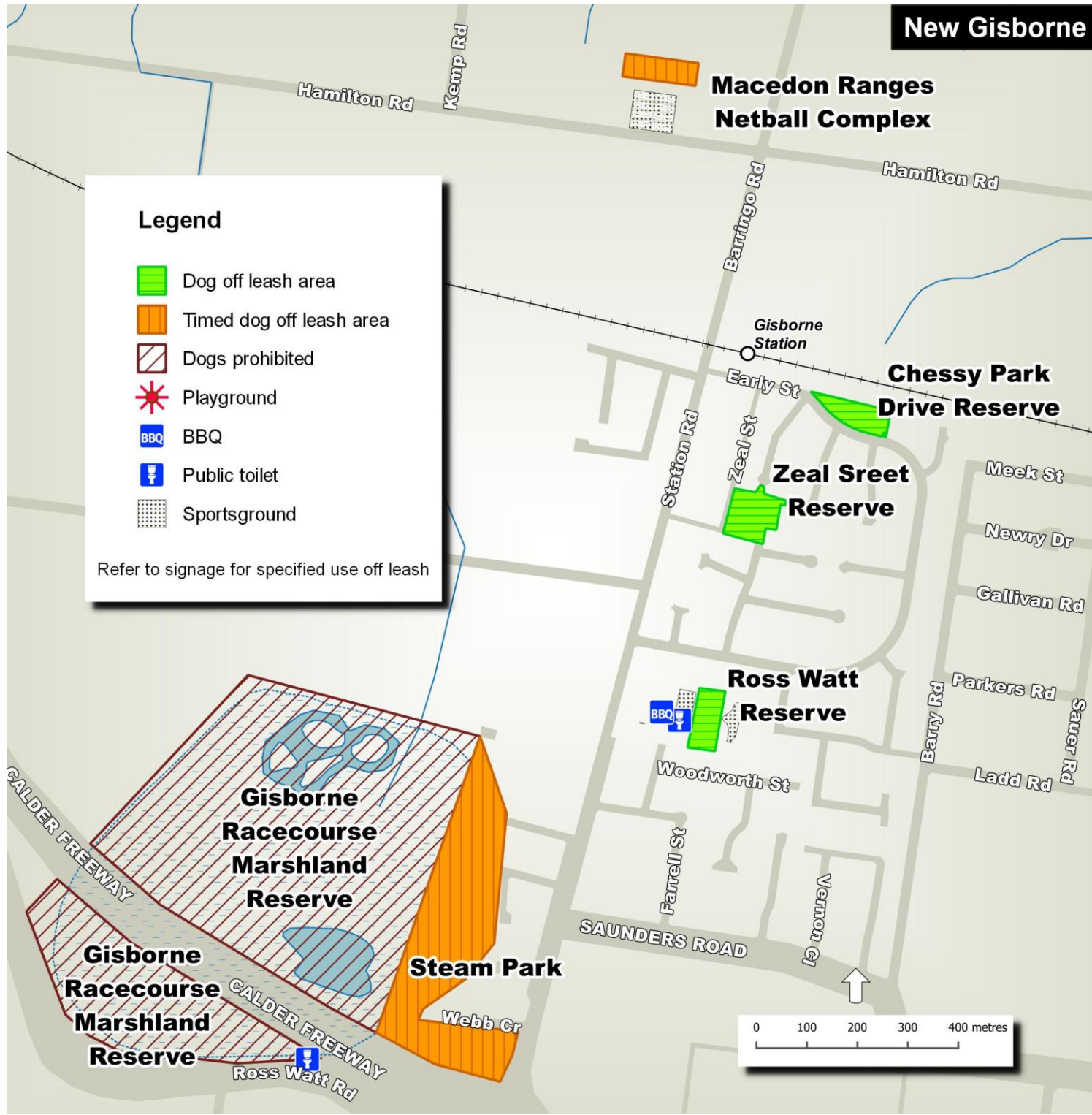
Bullengarook

Gisborne South

Legend

-  Dog off leash area
-  Timed dog off leash area
-  Dogs prohibited
-  Playground
-  BBQ
-  Public toilet
-  Sportsground

Refer to signage for specified use off leash



Does my dog need to be on a leash?

Macedon Ranges Shire Council requires dogs to be on a leash in all public areas of the shire, unless you are in a designated off leash area. Whether on or off leash, dogs must be within effective control at all times. Dog owners must clean up after their dog and never leave a dog unattended in a public place.

Can I walk my dog anywhere in the shire if on a leash?

No. Under the new law, some areas are prohibited to protect the natural environment. If in doubt, refer to on site signage or further details on our website.

What rules apply in off leash areas?

When exercising your dog in a designated off leash area you must:

- Carry a leash, chain or cord that is in good condition and is able to be placed on your dog when necessary
- Ensure your dog is wearing an appropriately fitted collar, harness, or halter with a current council registration tag attached
- Actively supervise your dog and maintain a clear unobstructed view of your dog at all times
- Keep your dog within 50 metres of you, to allow for effective recall at any time
- Ensure your dog responds to recall and returns to your verbal command or hand signal
- Immediately place your dog on a leash and remove your dog from an off leash area if your dog attacks or behaves aggressively toward another person or animal
- Place your dog on a leash if within five metres of a footpath, playground, BBQ or picnic table

Designated dog off leash areas for New Gisborne, Bullengarook, Gisborne South*

- Steam Park
- Macedon Ranges Netball Complex
- Chessy Park Drive Reserve
- Zeal Street Reserve
- Ross Watt Reserve
- Bullengarook Recreation Reserve
- I.R. Roberston Reserve
- Gilligan Reserve

* Some off leash areas are subject to restrictions and conditions. Users are encouraged to refer to the map legend enclosed, in addition to signs installed at each off leash location.

This brochure outlines the designated dog off leash areas for New Gisborne, Bullengarook, and Gisborne South. Other town-specific brochures are available at Council's service centres.

For more details on dog on and off leash areas, visit our website.

Dog on and off leash areas around Gisborne

