

Kyneton Town Hall

Technical Specifications



**Macedon
Ranges**
Shire Council

**Arts &
Culture**

mrsc.vic.gov.au/arts-events

Contents

Venue	2
Venue details	4
Stage	4
Auditorium	5
Access equipment	8
Loading Dock	9
Lighting	10
Audio	15
Audio Visual	20
Backstage	21
Contact us	24
Appendix	25

Venue

Located within an hour's drive of the Melbourne CBD to the south, and Bendigo in the north, the Macedon Ranges is renowned for its semi-rural lifestyle, unique natural features such as Hanging Rock, and local heritage townships. The Macedon Ranges covers 1,747 square kilometres straddling the Great Dividing Range surrounding Mt Macedon, and is home to over 40,000 residents.

Based in Kyneton, the Town Hall is the centre for performance in the Macedon Ranges. Operated by Macedon Ranges Shire Council, the town hall is a fully functioning multi-purpose space for professional and community events.





Venue details

Address	129 Mollison Street, Kyneton 3444
Postal address	PO Box 151, Kyneton VIC 3444
Box office	1300 88 88 02
Email box office	kthtickets@mrsc.vic.gov.au
Email tech	kthtech@mrsc.vic.gov.au

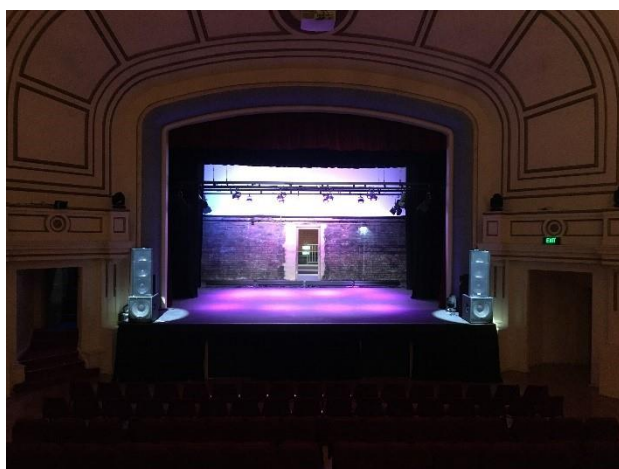
Stage

The Kyneton Town Hall stage is raked with a fixed proscenium arch, hardwood floor covered with yellow tongue sheets.

Stage distributed load limit: **To Australian Standard**

Stage point load limit: **To Australian Standard**

Stage rake: **Yes 1:35**



Dimensions

Proscenium	
Stage Width (Between Proscenium)	7600mm
Stage Height	4500mm
Stage Depth	8200mm (Down Stage edge of Apron to Rear Wall)
Setting line	
From rear of proscenium	350mm
From DS edge of stage	2470mm
Distance from - (SL = Setting line, CL = Centre line)	
SL to DS edge of apron	2470mm

SL to first fly line	10mm (LX1 Winch)
SL to last upstage fly line	4150mm (LX3 winch)
SL to rear wall	5730mm
CL to OP wall (or obstruction)	DS 5750mm (first 1500mm from rear of proscenium) / US 7190mm
CL to PS wall (or obstruction)	7190mm
Stage to underside of grid	8.5m

Overhead obstructions



Fly Galleries protrude **1200mm** at a height of **2550mm** from OP and PS Walls.



Auditorium

The auditorium consists of stalls and one balcony level.

The Lower level has a flat floor and can be set up with flat seating or round tables (2 staff required 1 hour set up time) or raked seating 4 staff required 3 hours set up time.

Seating capacity with raked seating:

Stalls: 211 (inc AA & AAA rows)

Balcony: 209

Total: 420

Seating capacity flat floor round tables:

200 (additional 198 balcony seats)



Flying Facilities

Fly system

Motorised Winch, Chain Motor

Fly system details	
Operating Position	(LX Bars) PS Gallery, (Chain Motor Control) OP rear of Proscenium
Total number of Lines	3 LX Bars (motorised winches), 1 Movie Screen (chain motors), Legs Tabs and Borders dead hung
Panorama Lines	1 Fixed Bar OP, 1 Fixed Bar PS (used for Legs)
Batten Drift	8500mm
Batten Type	50mm O/D pipe
Batten Length	LX Bars 10200mm, Screen 8040mm
Batten Extensions	N/A

Batten Pick-ups	(2) X Pick Ups 2030 from each end (2) X pick ups 1900mm from each end
Batten Point Load	Under Review
Batten W.L.L.	250 kg
Cradle Capacity	N/A
LX bars can be swung	NO
Fly bars can be swung	N/A

See hanging plot for line allocations and further information.

Hanging plot

Line Type **SL** = Setting Line
SP = Single purchase
DP = Double purchase
MW = Motor Winch
HW = Hand Winch
HL = Handline

W.L.L. Maximum distributed load including bar weight



Line #	Distance from SL	Line Type	W.L.L	Venue Allocation	Intended Use (Hiring company use)
1	10mm	MW	250kg	LX1	

2	1200mm	Dead Hung	N/A	Border	Not Available for use
3	1300mm	Dead Hung	N/A	Tab	Not Available for use
4	1350mm	Chain Motor	250kg	FILM SCREEN	Not Available for use
5	2950mm	MW	250kg	LX2	
6	3500mm	Dead Hung	N/A	Border	Not Available for use
7	4150mm	MW	250kg	LX3	
8	3600mm	Dead Hung	N/A	Tab	Not Available for use
9	5100mm	Dead Hung	100kg	Cyclorama	

Drapery

*Type	Material	Colour	Width	Height	Quantity
House Curtain	Velvet 100% fullness	maroon	7700mm	5070mm	1
Borders	Wool 50% fullness	Black	7700mm	2000	3
Legs	Wool 100% fullness	Black	2200mm	7285mm	2 pairs
Tabs / Mid Stage and Rear Traveller	Wool 100% fullness	Black	9000mm	5070mm	2
Cyclorama	Cotton	White	9000mm	5070mm	1

Access equipment

Elevated Work Platform

JLG 25AM, push around vertical lift **Maximum reach is 7.67m**

EWP Restrictions

Auditorium level only (FOH Lighting Truss, Perches) **Outriggers must be used at all times**, one staff member to be located at base whilst in use, area must be confined by bollards when patrons and cast are in the vicinity. **EWP to be used by ticketed operators only.**

Ladders

1 x Waku Telescopic ladder Ext Height 6.4m, Step Height 2.92m

Staging Units:

3 x Portable stage decks W/ removable legs 1200mm / 2400mm / Height 45mm or 75mm

3 x Timber rostra 900 x 1200 x 450mm

Stage Covers

N/A

Stage Traps

N/A

Safety Curtain

Safety Curtain installed

Safety Curtain must be unobstructed at all times

Thickness of Fire Curtain

Distance from setting line

Manual sprinkler system above house curtain

N/A

N/A

N/A

Loading Dock

The Loading dock is at the side of the venue on the Hutton Street side. Access is through the Hutton Street doors. Parking is available for 5 tonne truck at rear of the venue. Larger vehicles are advised to unload on the curb side in Hutton St.



Additional Rigging notes

Total load bearing above stage is **1000kg**.

Staging notes

All flown Items must be rigged with rated equipment and is subject to approval by venue representative. Access to galleries by approved venue personal only.

Lighting

Positions

Stage LX Bars **Fixed**

See hanging plot for LX bar locations



FOH Bridge #1 (Please note total load bearing of the FOH bar is 100KG)

Setting Line to lighting bar	8100mm 45°
Usable bar width	7000mm

Additional notes	FOH Bar is tri truss on chain motors operated from PS rear of proscenium. FOH load limit is 150kg
FOH Perches (PS & OP)	
Setting Line to FOH Perch (Distances are to the highest downstage point of boom or perch)	8500mm 45°
Maximum lanterns per perch	Maximum (6) lanterns per perch
Additional notes	4 x patch points available per perch
Control	
Lighting desk	ETC Element 2
Control channels	1024 (4 x DMX 512 Universes)
Signal output	DMX
Signal distribution	1 stream of DMX to dimmer racks, LX1 LX 2 and LX 3. 1 x stream of DMX to FOH Truss.
Remote riggers available onstage	NO
Dimmer Racks	
Total Dimmers	96
Dimmer locations	Dimmers located at the US end of the PS gallery.
2.4Kw Dimmer racks	(4) x Jands HPC 12, (2) X Jands FP12, (2) X Jands DP12,
Total dimmers @ 2.4kw per dimmer	96
5Kw Dimmer racks	N/A
Total dimmers @ 5kw per dimmer	N/A

House Lights

Independent control	Optional- Controlled by Baxter Pocket Console
Control positions	Lighting Desk
Fade time adjustable	Manual

Stage Luminaire

Profiles

Make	Model	Angle	Detail / Accessories	Watt	Total
ETC	ETC Source Four LED Series 2 Lustr	25 – 50 Zoom	Shutters, Gel Frame	171w	5
Selecon	Pacific Profile	23 - 50 Zoom	Shutters, Gel frame GOBO Holders	600w	2
Selecon	Acclaim Axial Profile	18-34	Shutters, Gel Frame	600w	6
Selecon	Acclaim Profile	18/34	Shutters, Gel frames	650w	10
Selecon	Acclaim Profile	24/44	Shutters, Gel frames	650w	10
Prolite	650	16 – 25 Zoom	Shutters, Gel frames	650w	4

Fresnel's

Make	Model	Detail / Accessories	Watt	Total
Selecon	6"	Barn Doors, Gel Frame	600w	2
Prolite	PR7F	Barn Doors, Gel Frame	600w	4
Prolite	8"	Barn Doors, Gel Frame	1000w	12

PC

Make	Model	Detail / Accessories	Watt	Total
Selecon	Acclaim	Barn Doors, Gel Frame	650w	2
Selecon	PC 6"/ Compact 6 PC	Barn Doors, Gel Frame	1000w	8

Par Cans

Make	Model	Angle	Detail / Accessories	Watt	Total
Generic	Par 64 240V	MFL	Chrome, Gel Frames	1000w	10
ProShop Quad 7	Qaud 7	25 degrees	RGBW, Frames	56w	16
Led Technique	LED Par 64	40 degrees	Tri-Colour 3 Ch R,G,B	5w X 18	4
Thomas	Par 56	MFL	Frames	300w	6

Wash

Make	Model	Detail / Accessories	Watt	Total
Terbly	Rock Strips (2m)	60 x 3 Watt Tri-LED (RGB)	500w	4

Followspots and Moving Head Fixtures

Make	Model	Angle	Detail / Accessories	Watt	Total
Prolite		5-20	6 colour Magazine	2000w	1
Chauvet	FOLLOWSPOT-120ST LED FOLLOW SPOT	14° to 20°	7 + white split colours	120W	1
Chauvet	Intimidator Spot 375Z IRC	Pan and Tilt: 540°/270°	Colours: 7 + white, split colours, continuous scroll at variable speeds Gobos: 7 + open (6 aluminium + 1 glass), rotating, interchangeable,	150W	10

			indexing, slot-n-lock, continuous scroll at variable speeds		
--	--	--	-------------------------------------------------------------------	--	--

Additional lighting

Item	Make	Model	Detail / Accessories	Watt	Total
Mirror Ball		20"	w/ Motor		1
Fazer	Antari	Z350	Dmx (2ch)	800	1

Patching

Location	Quantity	Numbering (OP-PS)	Detail / Accessories
Control Position (OP Balcony)	6	1-6	lines 1 + 2 patched to hard power for lighting control and Spot Light
FOH Bridge (Truss)	18	7-24	Lines 19-24 terminate at PS of truss
OP FOH Perch	4	25-30	
PS FOH Perch	4	31-36	
Apron / Orchestra Pit	4	37-40	Under Stage apron
LX1	10	41-52	
LX2	10	53-64	
LX3	10	65-76	
OP Gallery US	6	77-82	

Control Position (OP Balcony)	6	1-6	lines 1 + 2 patched to hard power for lighting control and Spot Light
----------------------------------	---	-----	-----------------------------------------------------------------------

Power

8 x OP Gallery 32 Amp for Dimmers Only

1 x OP Rear of Proscenium at 4m, Chain Motors (Screen) and (FOH Truss) only

1 x PS Gallery DS end 32 Amp (Audio Only)

1 x Projection Booth 32 Amp, House Lights Only

Cabling

240v Extension Cable

The theatre has a good stock of extension leads to accommodate the venue's standard lighting rig. Any additional equipment will require additional cable stock to be sourced.

Lighting Notes

- On Stage Bars cannot be swung
- Access to On Stage Bars via Ladder
- Access to Perches and FOH Truss via EWP



Audio

Controls, Amplification and speakers

Control Positions	
Control area	Bio Box Rear of auditorium balcony level- Fully enclosed
Auditorium	Optional-Centre back row of ground floor raked seating bank. Seating capacity in stalls reduced by a min. of 20 seats.
Total seat allocation	Dependant on Equipment required

Other	Main Audio patch field is located on OP Gallery. There are 3 x dual 8 way looms for send and returns from audio positions anywhere onstage.
Control and Amplification	
Primary Mixer	Allen and Heath SQ7 48 channel / 36 bus digital mixer
Secondary Mixer	<ul style="list-style-type: none"> • PreSonus Studio Live 24 • 4 x groups • 6 x aux • 24 Mono Channels with 4 band EQ, Dynamics
Amplifiers	<ul style="list-style-type: none"> • Australian Monitor • Quest Engineering
EQ	<ul style="list-style-type: none"> • (3 Stereo = 6 Channels) Yamaha Q2031B Stereo Graphic EQ • Shure DFR11 (One Channel, Feedback Suppressor, GEQ, Delay) • 1 x dbx driverack 260
FX	1 x Yamaha Rev 500
Compression / Limiter / Gates	2 x dbx 266a comp/gate
Speakers	
FOH Speakers	<ul style="list-style-type: none"> • 2 x EV QRx 212/75 • 2 X JBL MP418S Subs • 2X QSCK10 Powered delay
Foldback	<ul style="list-style-type: none"> • 6 X QSCK10 Powered Speakers

Playback

Item	Make	Model	Detail	Total
CD Player	Denon	DN-C630	Single CD player	1
CD Player	Dennon		Single CD player	1

Microphones

Make	Model	Detail / Accessories	Use	Total
Shure	SM58	microphone clips	Vocals	4
Shure	SM57	microphone clips	Instruments	5
Shure	Beta 58	microphone clips	Vocals	2
Shure	Beta 57	microphone clips	Instruments	2
Shure	Beta52		Bass Drum, Bass Gtr	1
Sennheiser	901		Bass Drum, Bass Gtr	1
Senheiser	E604	Drum clips	Drums	4
Sennheiser	614	microphone clips	Drum Overhead	2
PA Strong	PZM	TINI QG – XLR adaptor	Bass Drum, Footfalls,	2
Clock Audio	C33E		Lectern	1
Generic	Pencil Condensor	Pop Filter	Drum Overhead, Instrument	2
Radial	USB Pro	Active/USB	Stereo DI	1
Radial	Stage Bug	Active	DI	3
Behringer	Ultra DI	Active	DI	2
Behringer	Stereo DI	Active	DI	1
Peavey	Active DI	Active	DI	2

Radio Microphones

Item	Make	Model	Detail	Total
Radio Receiver	Sennheiser	1 EM 500 G3	B Band	6
HH Radio Microphone	Sennheiser	E945	B Band	4

HH Radio Microphone	Sennheiser	E965	B Band	2
Wireless Belt Pack Transmitter	Sennheiser	EW500	B Band	4
Head Set Microphone	Sennheiser	HSP 2 Beige	Omni	3
Lapel Microphone	Sennheiser	ME 2-II	Omni	2

Accessories

Item	Model	Detail / Accessories	Total
Microphone Stands	Round Base	Tall	2
Microphone Stands	Round Base	Short	2
Microphone Stands	Tripod	Tall W/ Boom	6
Microphone Stands	Tripod	Short W/ Boom	2
Drum Clamps	K&M		4

Line patching

Location	Quantity	Numbering	Detail
OP Gallery	32		<ul style="list-style-type: none"> 24 Input 4 return Multicore to the front of the balcony 20 input 4 return Multicore to Bio Box 8 Dual Sex Separate Earth Lines to Balcony Front
FOH Truss	4	Patchable	To Bio or Stage
Balcony Front	8	Patchable	To Bio or Stage
OP Stage	16 input 8 return digital multicore (96k)	Patchable	To Bio Box
PS Stage	16 input 8 return digital multicore (96k)	Patchable	To Bio Box

Speaker patching

Location	Quantity	Numbering	Detail
Under Stage Apron	2	Patchable	Parallel Split
Proscenium Front OP	1	Patchable	Parallel Split
Proscenium Front PS	1	Patchable	Parallel Split
PS Gallery	1	Patchable	General Use Side Fill FB

Cabling

Audio Cable

The theatre has a good stock of cable to accommodate the venue's equipment.

Looms

16 x Send 4 Return 30m,

3 x 20m 8 way (Dual Sex Input),

1 x Digital 32 input 16 return Stage to Bio

Audio Notes

Music Acts May require Additional PA Equipment, please call venue supervisor to discuss.

Audio Visual

Projection Room

Bio Box

Projectors

Type	Model	Detail / Accessories	Total
NEC	NP550W	Short or Long Throw Zoom Lens'	1
NEC	NP-P350X		1

Screens

Projection Screen 7m/4m

Front Projection Cinema Screen, permanently rigged on chain motors above stage.

Monitor /Television Screen

2 X KDL50W660F - SONY 50 INCH FULL HD LCD LED

AV Playback Equipment

Item	Model	Detail / Accessories	Total
Macbook Pro	Apple	USB C/Thunderbolt 4 only	1
QLAB	V4.7	Audio, Video and Lighting Licenses	1

Projector Rigging Points

Projector has a mounting assembly and can be rigged from any horizontal lighting bar

Cameras

Panasonic AW-UE70KEJ 4K PTZ Camera

Switchers

1 x Blackmagic Atem Television Studio HD Pro

Cabling

- RGBHV (RG59) lines installed from FOH truss to bio box, bio box to balcony front and balcony front to stage.
- VGA FOH bar to stage, and FOH bar to bio box.
- 2 x RG6 12G SDI cable stage to bio Box
- The theatre has a good stock of coaxial and HDMI cable to accommodate the venue's own equipment as well as SDI to HDMI and HDMI to SDI cables.

Audio Visual Notes

Lack of depth on the stage area restricts possibilities for rear projection

Backstage

Communications

Communication details	
Stage Manager's Desk	Wired intercom system PS, LX, Sound, and Domes (Jands Ezicom). The venue has single and double muff headsets.
Talkback Via 6 x Motorola DP2400 Radios with Head Sets	<ul style="list-style-type: none">• Master Unit N/A• Total sub stations N/A• Total headsets 6 (For Use with Motorola Radios Only)• Radio Units In-house 6• Talkback patching located at: Configures per requirements
Paging / Show relay	Dressing rooms have video feed. Please contact venue if paging system is required.
Stage Monitor	Prompt side and Opposite Prompt side
Q Light System	In house Q light system available No

Dressing Rooms

Dressing Room	Capacity	Toilets	Shower	Details
1	8	No	No	Toilets opposite
2	8	No	No	Toilets opposite



Laundry / Wardrobe

Washing machines: **N/A**

Dryers: **N/A**

Drying rooms: **N/A**

Iron / ironing board: **1**

Clothes racks: **6**

Production facilities

Production desk: **To Requirements on application**

Production Office: **No, A Dressing Room can be used as a production office**

Fax: **No**

Access to phone for internet access: **To Requirements on application**

Greenroom

The Town Hall Kyneton has no Back Stage Green Room, upon request the Richardson Room can be used as green room. The Richardson Room is a 10m walk from the stage door. Or can be accessed from the auditorium.

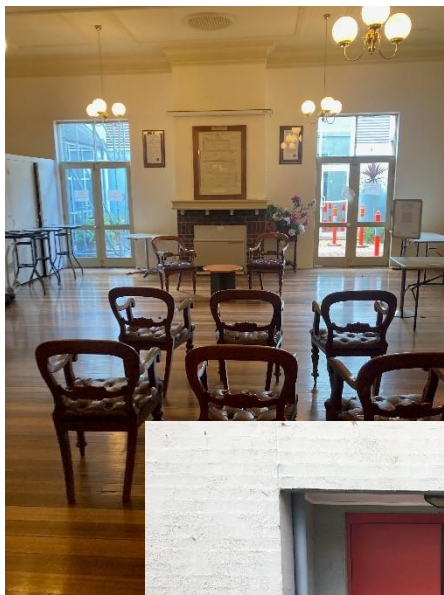
Richardson Room facilities

Tea / Coffee facilities **Yes**

Fridge / freezer **Fridge**

Microwave **Yes**

Running water **Yes**



Stage door

Access from the adjoining car park at the rear of the venue.



Rehearsal space

Upon request to the Venue Supervisor the Richardson Room can be used as a rehearsal Space.

Foyer bar

For Professional Hire In shows the Foyer Bar is operated by MRSC Arts & Culture Unit.

Town Hall kitchen

The Town Hall has a Kitchen stocked to provide catering infrastructure for 200 (including crockery, glassware and cutlery).



The Town Hall kitchen has no Napery service.



Contact us

Venue Technical Supervisor

Adrian Shand

T: 03 5421 1431

E: kthtech@mrsc.vic.gov.au

Box office

Joan Jackson

T: 03 5422 0394

E: kthtickets@mrsc.vic.gov.au

Coordinator Arts and Culture

Simon Clarke

T: 03 5422 0319

E: sclarke@mrsc.vic.gov.au

Marketing

Terry Moore

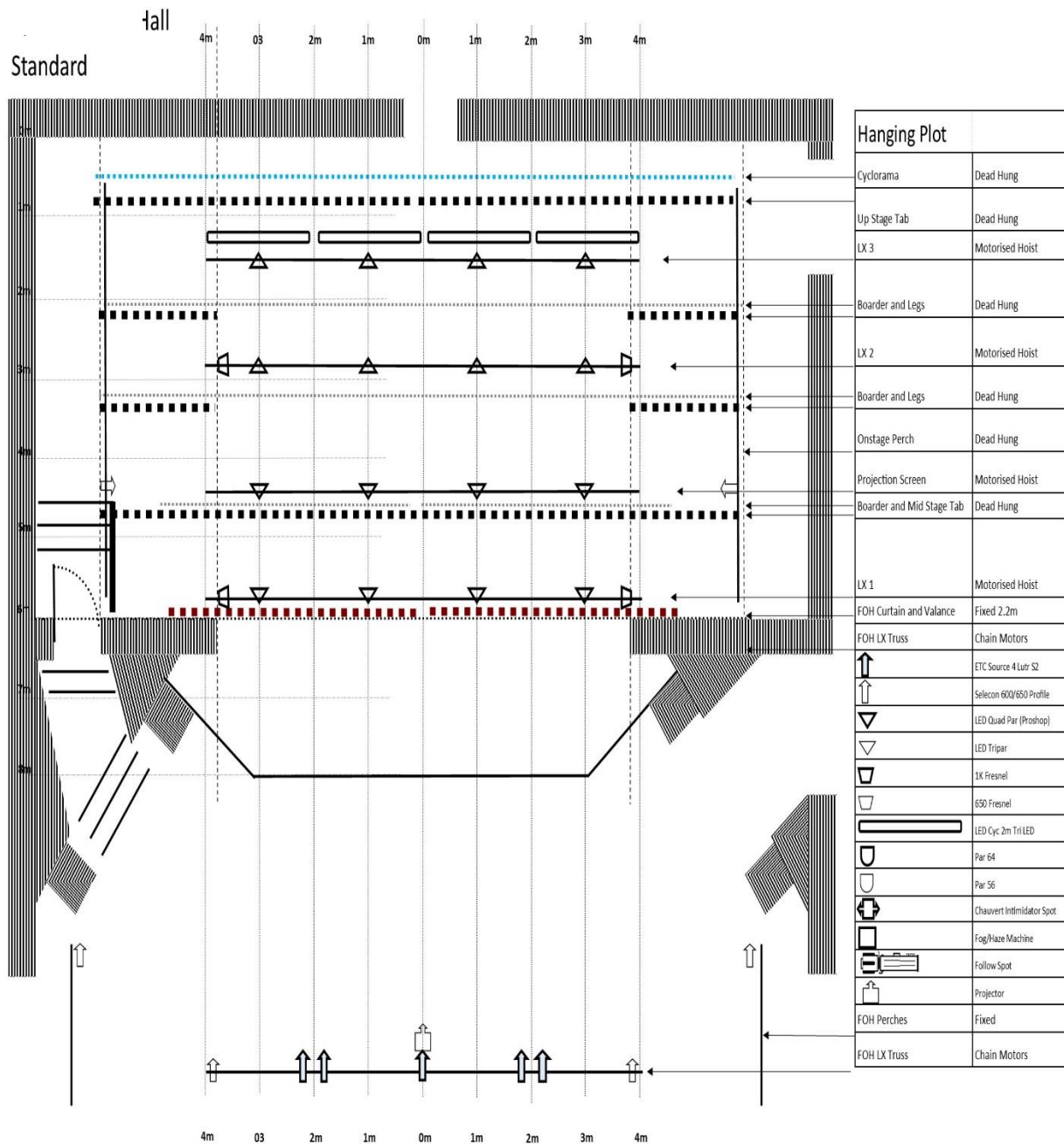
T: 03 5422 0383

E: kthmarketing@mrsc.vic.gov.au



Appendix

LX Standard Plot



For more information contact venue technical supervisor on 03 5421 1431