

# Macedon Ranges Community Equestrian Facilities Plan



**Final  
March 2026**

## About this document

This document has been prepared by @leisure Planners and is the Final Macedon Ranges Community Equestrian Facilities Plan.

Other documents prepared in the formulation of this Plan are the Consultation Findings Report June 2023 and Consultation Findings Report October 2024.

## Acknowledgements

@leisure would like to acknowledge the support and assistance provided by:

- Ewan Kellett - Kellett Cross Country
- Sanja Van Huet - Deakin University

We would also like to thank all stakeholders who were interviewed or provided a response to the community survey and public exhibition of the draft Macedon Ranges Community Equestrian Facilities Plan.

- All MRSC staff and Councillors (past and present) who contributed information or participated in a workshop or interview.
- All key stakeholders, including residents, peak bodies and community equestrian clubs who were interviewed, completed a community survey and provided feedback on the Plan

@leisure and the Macedon Ranges Shire Council acknowledges the Dja Dja Wurrung, Taungurung and Wurundjeri Woi Wurrung Peoples as the traditional owners and custodians of the land on which we work.



This project was sponsored by Sport and Recreation Victoria in partnership with Macedon Ranges Shire Council.



Rear 534 Mt Alexander Road Ascot Vale VIC 3032 Australia  
+61 3 9326 1662 info@alleisure.com.au www.alleisure.com.au

## Contents

About this document .....	1	3.6 Woodend Racecourse Reserve, Woodend.....	41
Acknowledgements.....	1	3.7 Lancefield Park Recreation Reserve, Lancefield .....	45
Contents .....	2	3.8 Riddells Creek Pony Club, Riddells Creek/ Clarkefield .....	50
<b>1. INTRODUCTION .....</b>	<b>3</b>	<b>4. ACTION PLAN .....</b>	<b>54</b>
1.1 The project.....	3	4.1 Ten Year Action Plan .....	54
1.2 Key Directions .....	3	<b>5. APPENDICES .....</b>	<b>60</b>
1.3 Equestrian participation.....	4	Appendix 1. Macedon Ranges equestrian clubs and membership .....	60
1.4 Current facilities .....	5	Appendix 2. Demand for equestrian activities in Macedon Shire .....	61
1.5 Equestrian clubs in the Shire .....	5	Appendix 3. Risk and maintenance responsibilities .....	76
<b>2. ISSUES AND OPPORTUNITIES .....</b>	<b>7</b>	Appendix 4. Megafauna site .....	83
2.1 Council's role in facilities .....	7		
2.2 Opportunities to grow and promote participation .....	8		
2.3 Covered/indoor arena .....	10		
2.4 Equestrian trails and shared paths.....	10		
2.5 Accommodating casual use of arenas .....	15		
2.6 Club development and sustainability.....	16		
2.7 Need for a facility hierarchy .....	17		
2.8 Risk and condition issues .....	19		
<b>3. EXISTING FACILITIES .....</b>	<b>20</b>		
3.1 Overview.....	20		
3.2 Bullengarook Recreation Reserve, Bullengarook .....	23		
3.3 IR Robertson Reserve, Gisborne South .....	27		
3.4 Barringo Recreation Reserve, Macedon /New Gisborne .....	32		
3.5 Rollinson Reserve, Kyneton .....	36		

# 1. INTRODUCTION

## 1.1 The project

The purpose of the Macedon Ranges Community Equestrian Facilities Plan is to:

- Ensure that equestrian facilities provided by Council are financially and environmentally sustainable.
- Review and audit the existing facilities and to identify the future needs for improvement.
- Provide clarity about facility maintenance and development responsibilities.
- Identify key risk management issues and development plan to address these issues.
- Investigate public access and inclusion arrangements for members and non-members.
- Investigate opportunities to grow and promote participation and prepare an equestrian specific participation plan to encourage a greater diversity in participation.
- Consider opportunities to establish safe trail riding locations in collaboration with other agencies
- Work with peak equestrian bodies to facilitate equestrian club planning and sustainability.

Previous research and studies undertaken by Council have been reviewed in developing this Plan.

This Plan identifies responsibilities for the Council and Clubs and establishes actions over ten years to 2035. Delivery of the Plan is a shared responsibility; any required Council funding is subject to consideration during annual budget processes.

## 1.2 Key Directions

Research and information gathered through community consultation and user group meetings have informed the development of this plan and provided details for the actions by site, identified in Section 4 of this plan. Framing the actions by sites are the key directions outlined below.

### Facility Management

Investigations identified the need for more clarity regarding facility maintenance and development responsibilities, mainly as some facilities are on Crown Land and may have different access to Council services than others. Historically, equestrian venues have grown in an ad hoc manner, often with little input and or knowledge from Council with routine maintenance of facilities seen as a high priority by equestrian clubs.

Developing a uniform licence agreement for equestrian clubs outlining management and maintenance responsibilities is identified to clarify responsibilities.

### Risk Management/Multi-use venues

The consultation process highlights a critical risk issue in using equestrian venues for non-compatible activities. Clubs are particularly concerned about dog off-leash areas at equestrian venues. To mitigate this risk, it is appropriate to review the co-location of these activities.

The plan also identifies further work is needed on the scheduling of motorsports occurring at the same venue as equestrian activities.

Due to multi-site use complexities and/or low club membership numbers, there may be some equestrian venues that operate with a reduced suite of equestrian activities or cease activities and relocate to other venues.

## Environmental & Cultural Management

Some equestrian venues have areas of land that are environmentally and/or culturally sensitive. To manage equestrian activities within sensitive landscapes, a careful balance is required. This may require limiting activities at some sites to protect environmental and cultural values

## Facility Hierarchy

The Plan recommends a two-tier hierarchy of equestrian facilities, local and shire wide. Shire-wide venues are characterised by a larger land footprint, the ability to serve a significant or growing population within the Shire, well-developed facilities, and higher usage rates. In contrast, local facilities consist of smaller clubs on limited land, focusing on entry-level participation.

Many of the actions identified in the Macedon Ranges Community Equestrian Facilities Action Plan relate to the need for improved or upgraded facilities and infrastructure (e.g. the condition of buildings, arenas, fencing, jumps, and internal roadways, as well as improved access to water). Therefore, having a facility hierarchy and a uniform and specific licence agreement in place will assist with clarifying responsibilities and prioritising identified actions.

## Covered Arenas

While the community and equestrian clubs are interested in developing covered arenas, this need is currently being met by private and commercial providers in the shire. Council does not support the provision of these facilities on Council owned or managed sites. It is expected that provision of covered arenas is through private and commercial equestrian providers only.

## Trail Riding

Trail riding opportunities within the shire are planned to take place on Parks Victoria and DEECA land rather than on Council-owned and managed land. Council will work with these agencies to enhance the promotion and availability of trail riding options.

## 1.3 Equestrian participation

Equestrian ranks among the top 10 sports for female participation (15+) in regional and rural Australia, with an estimated 118,000 participants in 2022/23—more than golf (89,000) and football/soccer (85,000). In total, around 195,500 women and 39,600 men participated in equestrian activities that year.<sup>1</sup>

In the Macedon Ranges there were 21 equestrian clubs with just over 1,000 active members in 2023 based at 12 public and private venues.

Participation data for Macedon Ranges Shire shows it has one of the highest participation rates in equestrian recreation activities in LGAs in Victoria. Participation in equestrian activities ranks in the top 10 sport and physical exercise activities participated in, whereas it does not rank in the top 15 for Victoria or Australia overall.

Only four Victorian LGAs have equestrian activities in the top ten sport and physical activities, for females:

- Golden Plains (9.5%)
- South Gippsland (8.5%)
- Macedon Ranges (6.3%)
- East Gippsland (5.6%).

According to peak bodies, Macedon Ranges is the second strongest region in Victoria for equestrian sports participation, after the Mornington Peninsula.

<sup>1</sup> National Sport and Physical Activity Participation Report. AusPlay. October 2023

## 1.4 Current facilities

There are seven existing community equestrian facilities in the Macedon Ranges on public land.

- Bullengarook Recreation Reserve, Bullengarook
- IR Robertson Reserve, Gisborne South
- Barringo Recreation Reserve, Macedon
- Rollinson Reserve, Kyneton
- Woodend Racecourse Reserve, Woodend
- Lancefield Park Recreation Reserve, Lancefield
- Riddells Creek Pony Club, Clarkefield (Candlebark).

There are a number of other private equestrian facilities in the shire that clubs utilise. These include:

- Venus Equestrian Centre, Gisborne
- Macedon Ranges Equestrian Centre, Carlsruhe
- Kookaburra Park Equestrian Facility, Kyneton
- Springfield Equestrian Park, Springfield
- Harney Park, McIntyre Lane Bolinda.

Details of each site are provided in Chapter 3 - Existing facilities.

Map 1 on page 6 provides the distribution of public equestrian facilities across the Shire.

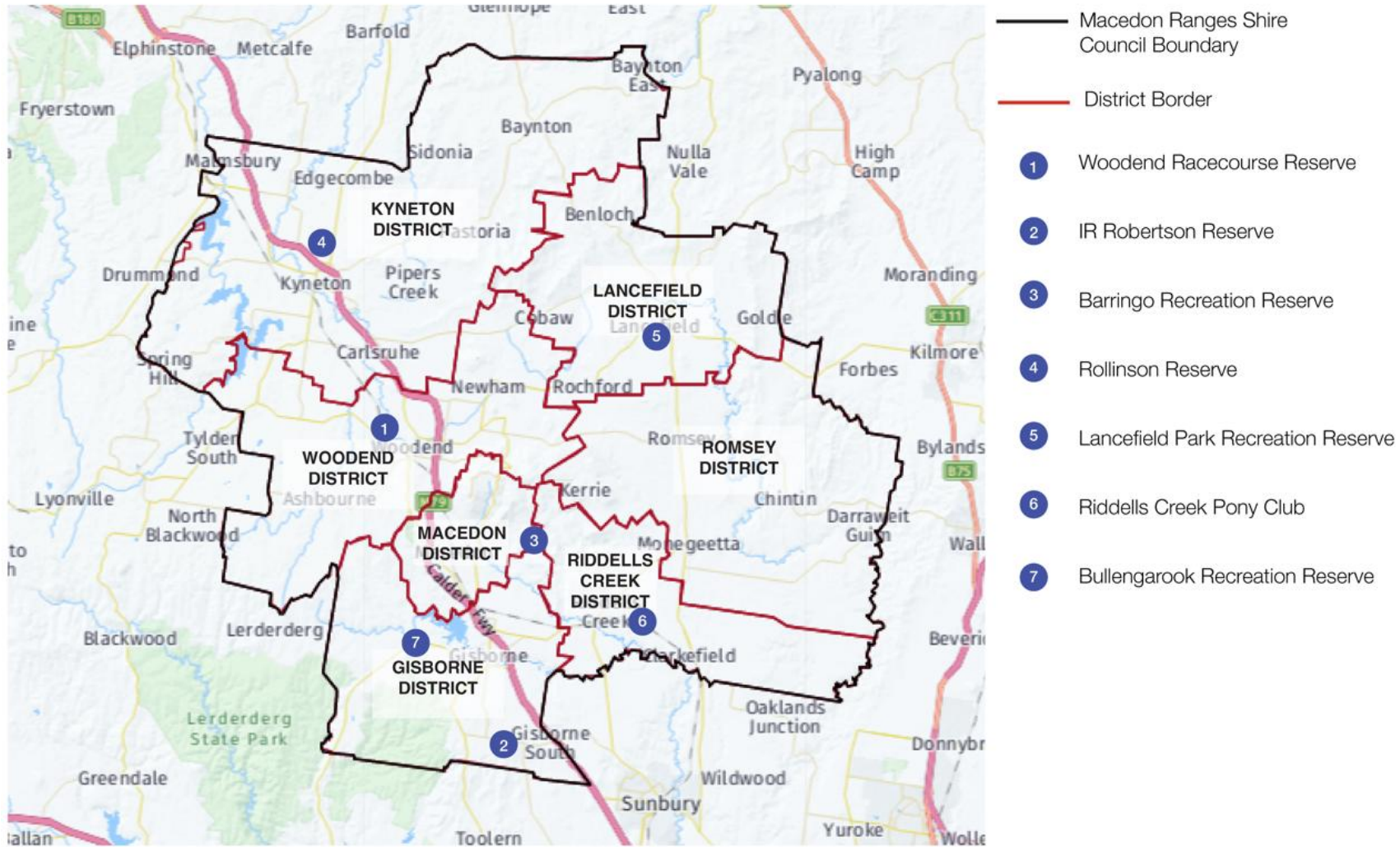
<sup>2</sup> In 2020 the Gisborne and District Adult Riding Club merged with the Macedon Ranges Working Equitation and continued operating as the Gisborne and District Adult Riding Club.

## 1.5 Equestrian clubs in the Shire

There are at least 21 known equestrian clubs based in the Macedon Ranges Shire on public and private land with a total membership exceeding 1000 members. **Table 1 Equestrian Disciplines by Club.**

Discipline	Club name
Adult Riding	Kyneton and District Adult Riding Club Bullengarook Adult Riding Club Gisborne and District Adult Riding Club <sup>2</sup> Riddells Creek Adult Riding Club Bolinda Riding Club Aurum Club Equestrian Inc. Black Hill Riding Club, Gisborne South Five Mile Equestrian Club
Pony Club	Kyneton Pony Club Bullengarook Pony Club Gisborne Pony Club Macedon Pony Club Woodend Pony Club Riddells Creek Pony Club Lancefield Equestrian Group Lancefield Pony Club
Trail Riders	Kyneton District Trail Riders Club Riddells Creek Trail Horse Riding Club
Show Jumping	Melbourne Show Jumping Club
Dressage	Macedon Ranges Dressage Club
Working equitation club	Working Equitation Lancefield Districts

Map 1. Distribution of public equestrian facilities in the Macedon Ranges Shire



**Distribution of Equestrian Facilities Macedon Ranges Shire**  
Data source: Profile .id <https://profile.id.com.au/macedon-ranges>

## 2. ISSUES AND OPPORTUNITIES

### 2.1 Council's role in facilities

There is need for clarity about facility maintenance and development responsibilities at each site.

Council has historically provided limited maintenance activities to equestrian sites.

It appears that not all clubs have current occupancy (licence) agreements. These agreements are essential in establishing legal responsibilities and the responsibility for the costs of development, maintenance, and renewal of facilities, some of which may be provided by Council while clubs may bear ongoing responsibility. Any recommendations contained within this report for Council expenditure is subject to annual budget consideration. Any development of facilities must be consistent with the Macedon Ranges Statement of Planning Policy.

Additional responsibilities are Appendix 3.

#### Action Plan Recommendations

Some ongoing maintenance issues should be addressed at Council equestrian facilities. The establishment of maintenance responsibilities for Council and Clubs is essential and should be finalised through Occupancy Agreements. It is considered that the following elements require clear understanding:

- Undertake a building audit on all Council owned clubhouse buildings on equestrian reserves to ascertain the noncompliant and most urgent works required, and preventative maintenance going forward- regardless of who does the work.
- Provide a uniform service on equestrian facilities, which includes:
  - Safe access from the main road (and, where possible, two road access points in case of events or emergencies).
  - A suitable gate/keyed entry.
  - Regular mowing and tree management on the site, where these are required.
  - Essential Safety Measures (ESM) / fire services
  - Bushfire management.
  - Access to power and drinking water (where feasible).
  - Fencing or repairing the perimeter of the site with appropriate materials – for example, remove barbed wire.
  - Assess needs and feasibility of provision for the users of each site (see Appendix 3 - Risk and maintenance responsibilities).

## 2.2 Opportunities to grow and promote participation

Demand for equestrian facilities is outlined in Appendix 2 – Demand for Equestrian Activities in Macedon Ranges Shire Council. This has informed the growth and promotion opportunities and preliminary directions.

A high proportion of females participate in equestrian activities and equestrian sports.

There appears to be growth in a wide range of equestrian activities, including equitation, carriage driving etc., that could be facilitated in the existing facilities.

There is a high demand for trail riding in the Shire but limited information for residents about facilities currently designed for this purpose.

With an increase in mountain biking in the Shire, there is an increasing demand for tracks and trails and potential conflicts between activities.

There are limited opportunities for people with disability to ride with others in the Shire, although there is high demand. One or more of the existing sites can become a Riding for the Disabled Association of Australia (RDDA) venue, supported by RDDA to deliver equestrian opportunities for people with a disability. No RDDA services the Shire.

There is interest in school equestrian activities, and one school with a strong equine focus but no facilities.

There are potential sports participation benefits of fostering a greater connection with clubs and schools, contributing to economic development benefits.

The shire has a large number of equestrian clubs (particularly Riding and Pony Clubs) – more than any other known Council in Victoria.

This number of clubs allows for multiple disciplines to be accommodated and a wider range of residents' interests to be supported.

Clubs in the shire have slightly different focuses that encourage riders with different aspirations, abilities and motivations, with some more competitive than others.

There are two trail riding clubs in the shire and increasing demand for more riding routes for casual riding.

Previously published information about sites in the regional park with float parking and yards is no longer accessible, and clubs report more information is required about routes, support facilities available, and time taken to ride these.

The main threats to equestrian participation are:

- The potential loss of suitable and safe public or private equestrian facilities for recreation and sport.
- Inability to cater for growing need for disabled access to equine facilities and programs.
- Increased urbanisation resulting in less demand/ desire for horse riding activities

Council's Recreation team supports clubs and facilities to grow participation opportunities; however equestrian clubs have been typically self-sufficient and self-effacing.

There is limited information and maps for trail riding. This activity primarily takes place on land that Council is not the owner or manager of. However, improved information and/or links on Council's website could benefit users to match the demand for equestrian facilities with available opportunities.

## Action Plan Recommendations

- Support partnerships between the schools, clubs, health promotion groups and other stakeholders will support opportunities for more people to ride.
- Work with RDDA to investigate South Gisborne and/or Bullengarook as an RDDA facility. Work with RDDA and other potential partners to establish and promote this opportunity to the community.
- Promote a code of conduct for cyclists and trail bike riders that assists with awareness about meeting horses on trails.
- Advocate with Parks Victoria and Department Energy, Environment and Climate Action (DEECA) regarding trail riding opportunities and prepare an update of information about trails in the shire.
- Provide information about equestrian clubs, facilities to hire, and trails in the shire on Council's website.
- Update signage at each equestrian site with a facility name and contact details for information.
- Work with clubs to establish a casual use system for relevant sites.



Image – Bullengarook Recreation Reserve.

## 2.3 Covered/indoor arena

A covered/indoor arena was a common request from the community survey and from interviews with user groups.

From a financial sustainability perspective, provision of covered arenas will not be funded by Council.

It is considered that the benefits of covered arenas can be well catered for through private equestrian providers within the shire and adjacent LGA's. Noting that users of these facilities will need to travel further than a local club to access a covered arena.

A local club may wish to fund, develop and maintain a covered arena for their own purposes.

### Action Plan Recommendations

Although covered arenas were commonly requested during consultation, Council does not support the provision of these facilities on Council owned or managed sites. It is expected that provision of covered arenas is through private and commercial equestrian providers only.

## 2.4 Equestrian trails and shared paths

Initial consultation identified that there is demand for casual and club trail riding in the Macedon Ranges Shire.

There are declining opportunities for horses to ride safely on the road (even though they are classified as a vehicle) or road verges because of increased vehicle volume and the difficulty in managing roadside vegetation growth that is significant for conservation purposes.

Council has limited off-road trail routes. Shared trails provided are focused on walking and cycling only.

Council considers that the most appropriate land for trail riding within the shire is Crown Land, managed by Parks Victoria and DEECA. Council can play an advocacy role with clubs for further trail riding opportunities within the Shire.

There are a number of regional trail locations promoted on Crown Land. These include:

- Macedon Regional Park: The Ridge Track and Major Mitchell Plateau Track providing stunning views of the surrounding countryside, while the Sanatorium Lake Loop offers a picturesque ride.

- Cobaw State Forest: Located near Kyneton, it provides an extensive horse-riding trail network. The forest offers open areas, bushland, and creek crossings, providing a diverse riding experience.
- Wombat State Forest: Near Woodend and Daylesford, the Wombat State Forest offers a vast network of trails for horse riding. E.g. the Firth Park Campground. The forest includes open areas, eucalyptus forests, and fern gullies.
- The Old Scout Camp, in Macedon Regional Park which has space for float parking with suitable riding locations.
- Mount Disappointment State Forest.

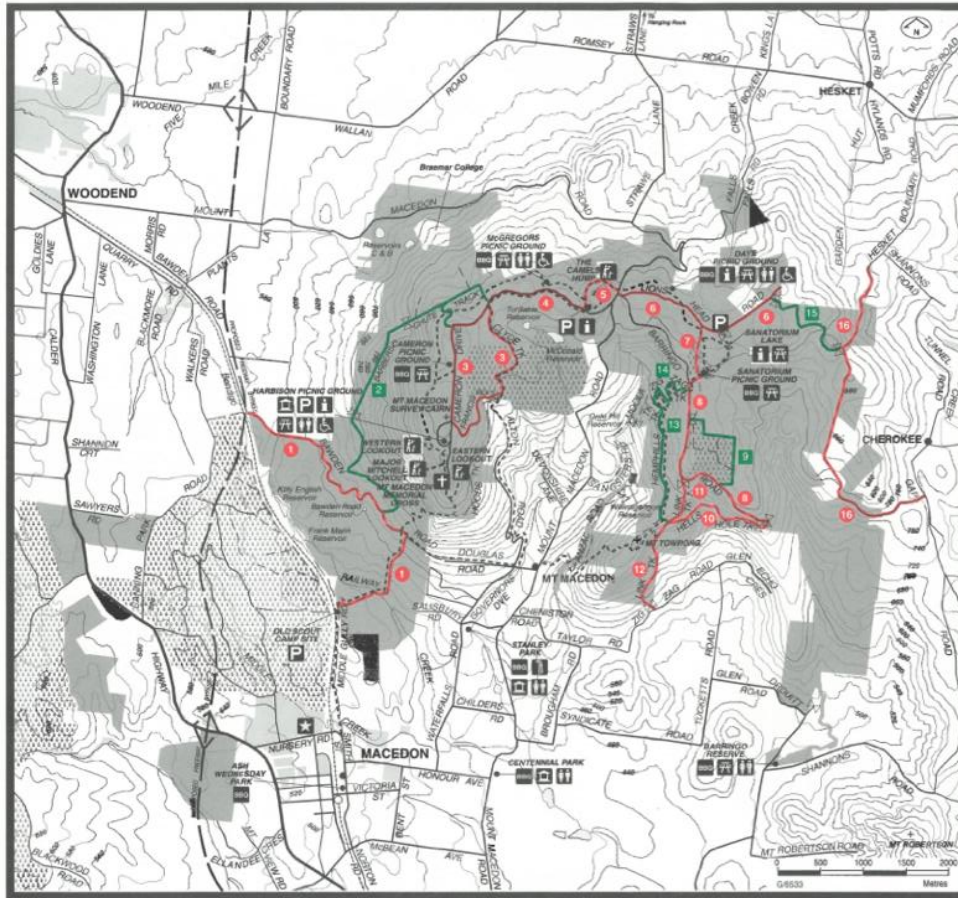


Image – Previously produced Parks Victoria Trail Riding Map / Information sheet. It is noted trail riders would benefit from Parks Victoria updating resources such as this.

### Action Plan Recommendations

- Advocate for increased trail access on Crown Land with Parks Victoria and DEECA.
- Advocate for an updated trail riding location and information map in conjunction with Parks Victoria, and DEECA, and the trail riding clubs.
- Advocate for safe trail riding in the following locations:
  - o Macedon Regional Park
  - o The Old Scout Camp
  - o The Ridge Track
  - o Major Mitchell Plateau Track
  - o Sanatorium Lake Loop
  - o Cobaw State Forest
  - o Wombat State Forest from Firth Park Campground
  - o Bullengarook Reserve – Walsh Road to Pyrites No. 1 and 2 Track.
- The following maps demonstrating five horse trails (not Council assets) that could be promoted and developed with improved parking, tie ups and water.
- Consider opportunities to establish safe trail riding locations in collaboration with other agencies.

The following five horse trails could be promoted and developed with improved parking, tie ups and water:

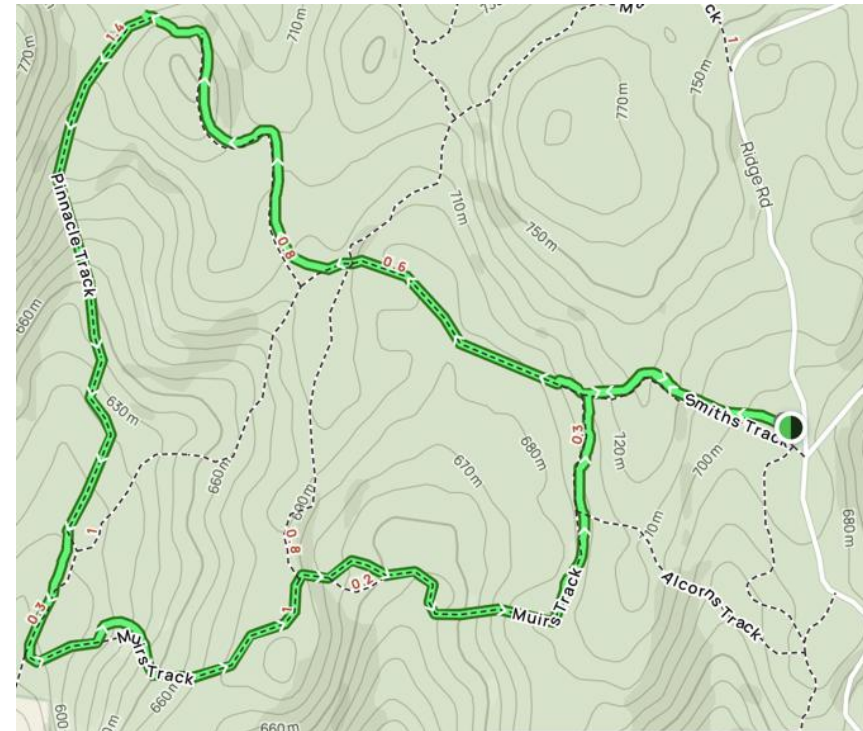


Image: alltrails.com

#### Cobaw State Forest

Pinnacle Track Loop. Start and finish at Smiths Track off Ridge Road. Parking. Popular trail bike area

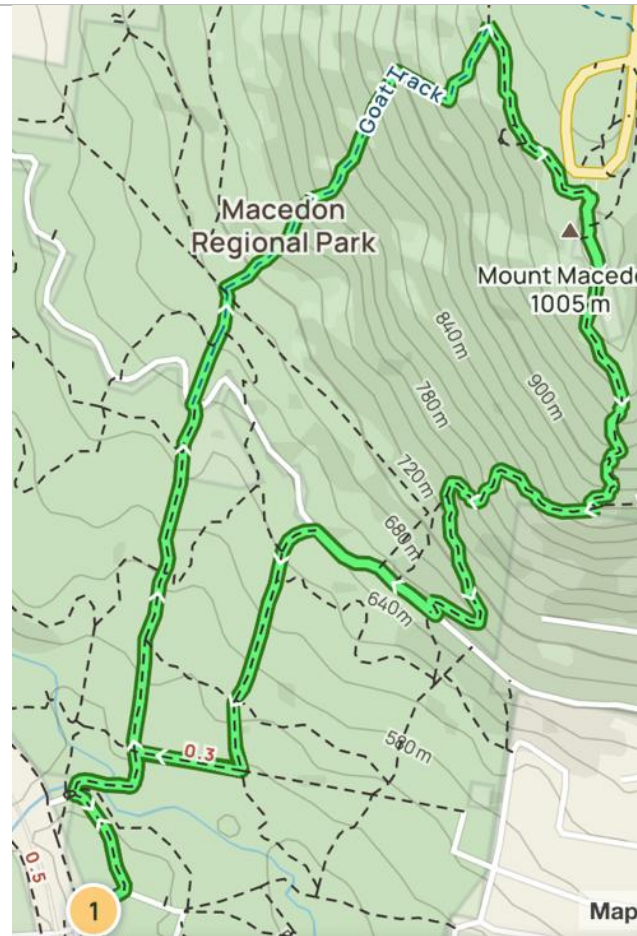


Image: alltrails.com

**Macedon Regional Park**

Memorial Cross via Old Scout Camp Road. 7.4km  
Parking, horse yards, camping

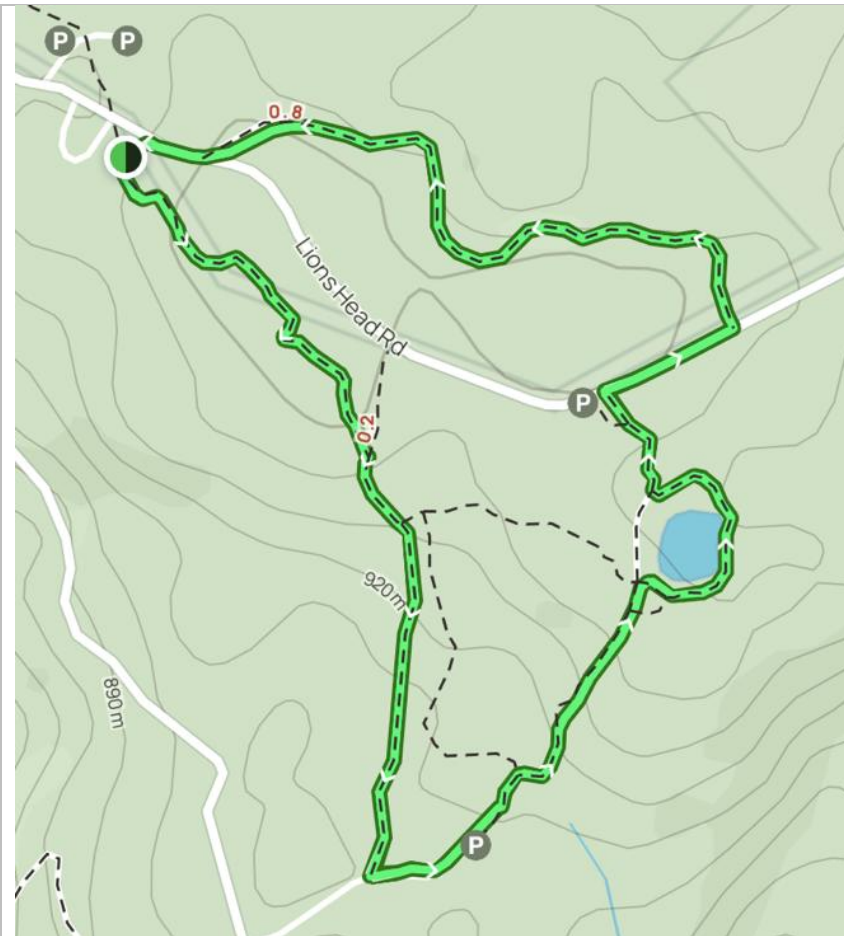


Image: alltrails.com

**Macedon Regional Park**

Sanatorium Lake Loop. 3.1km. Parking, toilets and picnic tables

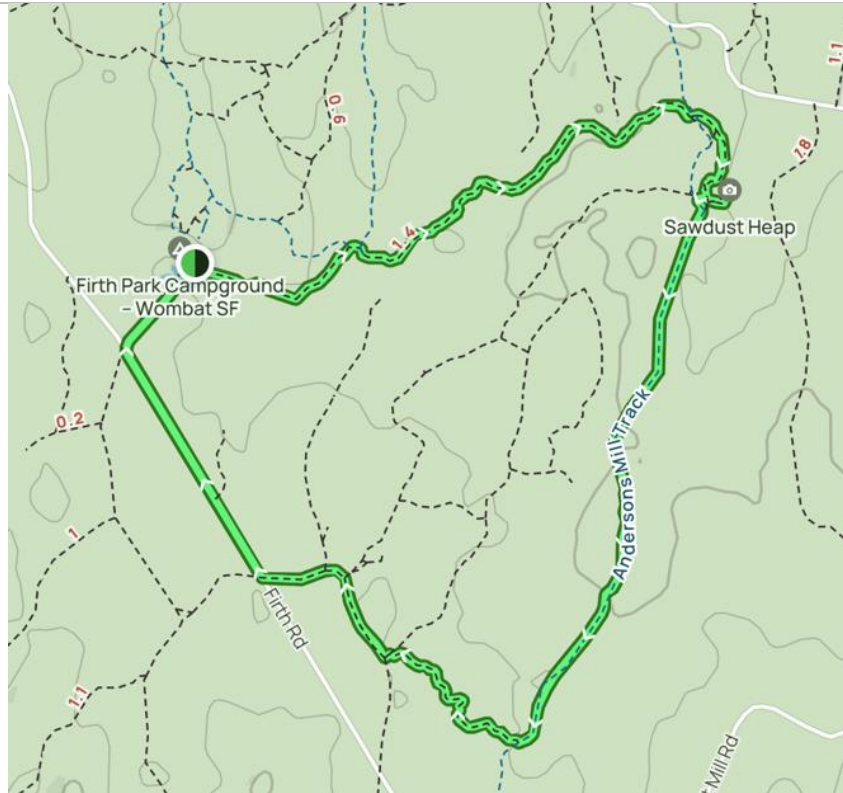


Image: alltrails.com

**Wombat State Forest.**

Start and Finish at Firth Park Campground. Approx. 8 km  
Parking, toilets, water, picnic tables, horse corral, camping

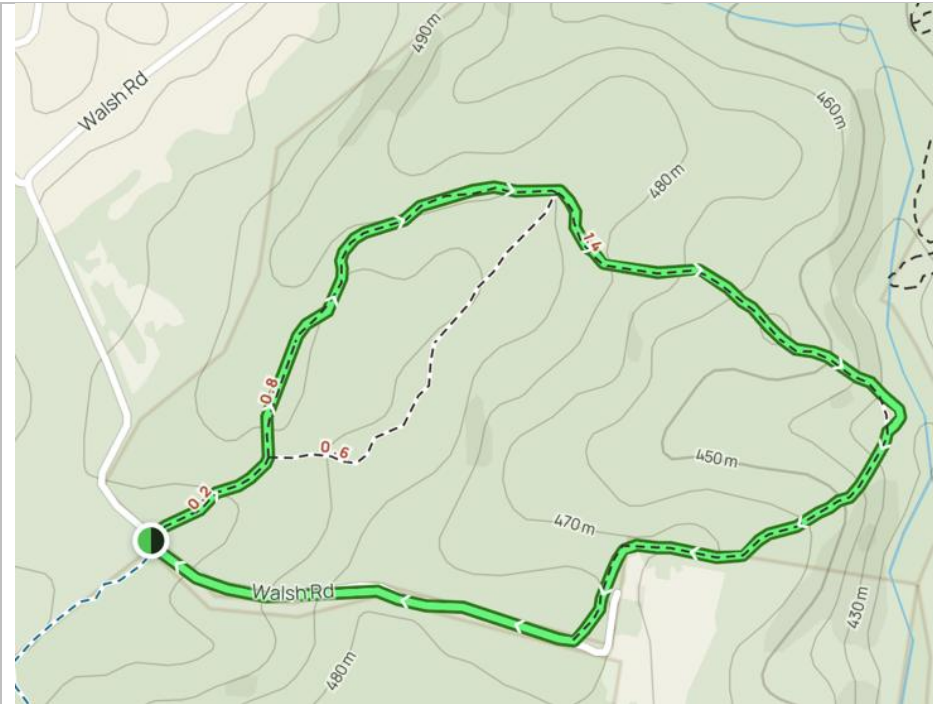


Image: alltrails.com

**Lerderderg State Park.**

Start and Finish at Bullengarook Pony Club, Walsh Road, Bullengarook. 4.1km from Pony Club or 3.2km loop as shown above. Parking and tie ups at Reserve.

## 2.5 Accommodating casual use of arenas

There is very high demand for casual use of existing equestrian facilities.

There are opportunities through offering casual use to increase the income for clubs.

To ensure their safety, casual users should be members of a peak body that oversees the discipline for which they are using the facility.

It would be beneficial for clubs to establish a user agreement or code of conduct for use; for example, requiring users to pick up manure after themselves, put any equipment away, use designated car parks, not bring dogs, lock the gates etc., and desirably only use a facility with an accompanying person or when the facility is being used by others.

It is not uncommon for clubs outside of the Macedon Ranges to have an online booking system that require the participant to sign a waiver, provide information about themselves and their insurances etc. and pay a one off or yearly fee for access.

Some clubs may offer the opportunity as an extension of their membership, for an additional

fee or provide a separate booking process as a key holder.

Before casual use is encouraged, the condition of facilities should be assessed as being appropriate for that use.

The nature of the existing facilities may lend themselves to the establishment of a Community Asset Committee's (CAC's). This would formally establish management, maintenance and funding arrangements and could be investigated.

Bookings for casual use of facilities should be authorised by the relevant committee under formalised arrangements.

A club is required to have in place rules relating to use of the ground which mitigate risk to the Club/venue owners and riders.

Where grounds are open to the public, club equipment must be stored in a locked facility and signage clearly displayed to address identified risks related to use of the grounds.

Clubs located on individual's private properties, places of residence or business premises are not covered by Horse Riding Club Association of Victoria (HRC AV) policy, Management Liability or Public Liability insurance for members' casual use of facilities.

The major risks identified by HRC AV risk management policy, relating to site specifics, horse welfare or infrastructure should be carefully considered by clubs when allowing

casual facility use. Any formal agreements should address the risks for the following:

- Falls of horse or rider.
- Loose dogs causing horse to misbehave/accident.
- Cars and floats causing accident.
- Disruptive horses causing chain reaction/fall.
- Being knocked over by an undisciplined or loose horse.
- Damage to vehicles.
- Horse escaping from venue and causing damage to people or property outside of it.
- Extreme heat.

### Action Plan Recommendations

- Clubs and peak bodies to collaborate to alleviate risks that prevent casual use, including condition of facilities.
- Clubs and peak bodies to establish an online booking system for casual use for appropriate facilities.
- Investigate suitable gate/entry design to facilitate casual use.
- Pilot a booking system at one site before full implementation. Once the system is in place, promote the opportunities for casual use of suitable facilities across the shire.

## 2.6 Club development and sustainability

Some equestrian and pony clubs within the municipality are quite small, which limits the opportunities for them to manage equestrian facilities that they need to use and rely on for income.

Typically, small clubs rely on being able to hire private or public facilities to conduct their regular activities and to conduct one or more events a year to cover basic costs. The availability of private facilities for public hire is not assured and based on availability.

Some clubs are based at facilities with site capability and planning issues limiting expansion access, functional use, and development.

The peak body for each club should be the principal conduit for issues associated with club development and technical aspects, insurance etc., related to the each of the equestrian disciplines.

Council could assist clubs as follows:

- Promote equestrian opportunities and information on Council's website that may lead to increases in club membership.
- Develop clear maintenance responsibilities between Council and clubs.

- Assist clubs with developing partnering opportunities or accessing grants.
- Advise clubs of appropriate Council contact to raise and report issues.
- Assist clubs in understanding a network approach to equestrian provision as some clubs will provide activities that other do not.

### Action Plan Recommendations

- Prepare new occupancy agreements for clubs with reasonable roles and responsibilities.
- Promote participation in equestrian activities, facilities and clubs to grow membership.
- Promote a network approach (building collaborative relationships around a shared vision to achieve goals) to equestrian provision across the shire.



## 2.7 Need for a facility hierarchy

Some facilities that are highly used have a more competition focus and ability to stage events. Other facilities provide for more local and casual use.

Whilst it's beneficial that most clubs have opportunities to train in all disciplines, it is difficult for smaller clubs to provide for all riding disciplines and ensure appropriate standards and well maintained and compliant facilities for any competitions.

At present, most regional events occur at the Werribee National Equestrian Facility or at private facilities in other regions such as Boneo Park in Mornington and Juravon in Melton.

Currently, many clubs hire private covered or enclosed arenas for some activities. Council does not see a role in the provision of these facilities.

A hierarchy of facilities, supporting one or two facilities to become a Shire wide facility more able to sustain events, is an appropriate approach.

Key site selection criteria for shire wide municipal equestrian facility include:

- Safe all weather road access for floats and float access from the freeway and/or suitable wide roads with good sight lines for floats to pass.
- Two access points for events and emergencies.
- Adequate size: preferably 8+ ha of relatively flat land, stables, paddocks, parking areas, and support buildings. Where possible, the site should also have room for potential future expansions.
- Location: close to a main centre of population or with good access to primary road networks and suppliers.
- Availability of existing infrastructure, as well as services such as electricity, water supply, sewage systems, and internet connectivity.
- Suitable planning zones, with no major constraints associated with planning overlays, cultural heritage, or land capability.

- No major issues such as poor drainage, slope, bush fire prone, or sites of high environmental significance.
- Land in Council or public ownership or management and cost effective to develop.
- A prominent, easy to find site.
- No conflicting land use adjacent that may impact on regular use or events without public nuisance.
- Site large enough for access in and around by emergency and maintenance vehicles, large rigs/ floats, trucks, and where possible, camping (either at the site or adjacent.)

### Action Plan Recommendations

- Introduce a two-level hierarchy of facilities: local and Shire-wide. (See Table 2 on page 19)
- Consider elevating the standard of one or more facilities in the Shire that are suitable for events including cross-country
- Investigate options to enable camping on, or in the vicinity of, the shire-wide facilities.

The following table shows the recommended venues within the equestrian hierarchy of facilities.

**Shire wide facilities** are those that have a combination of large existing land footprint, service a large town or growing population within the shire, well developed existing facilities and higher usage.

**Local facilities** have small clubs on smaller land footprints and with facilities that cater for entry level participation.

**Table 2. Macedon Ranges Equestrian venue hierarchy.**

Hierarchy level	Venues
Shire wide	Rollinson Reserve IR Robertson Reserve
Local	Bullengarook Recreation Reserve* Barringo Recreation Reserve* Woodend Racecourse Reserve Riddells Creek Pony Club (Candlebark)**



\*Environment managed reserves.

\*\* Riddells Creek Pony Club (Candlebark) is based on land part owned by Council with a large portion on private land. Councils' responsibilities only include assets on the Council owned portion of land.

Note: Lancefield Park, home to the Lancefield Equestrian Group and Pony Club. The facility is based on Crown land and managed by a volunteer Committee of Management that reports to the Department of Energy, Environment and Climate Action (DEECA). Council does not have any involvement in management, maintenance or facility development at the Reserve. It is therefore not listed on the hierarchy.

## 2.8 Risk and condition issues

Equestrian activities present a moderate to high level of risk either through riding or events. The potential risks at community equestrian recreation facilities include:

- Cross-country activities and condition of courses.
- The inconsistent state of sand arenas (bases).
- Areas of poor drainage.
- Condition and non-inclusive support facilities on several sites.
- Absence of permanent water supply for horse welfare and human consumption.
- Non-secure fencing.
- The size of some clubs limits the degree of maintenance they can undertake, and the viability of them having a facility of their own.
- Risk of impacting participation, especially for females, if a reduced range and the number of equestrian sites and places to ride are available.
- Bush fire management.

- Some sites don't have more than one exit /entry, which provides risks in times of fire and emergencies and event management.
- Dogs (especially off leash) using the same reserve.
- Environmental and cultural impacts (i.e Barringo has significant cultural heritage values that are further impacted by the use and provide substantial costs for Council to manage).

### Condition of facilities

Kellett Cross Country, an accredited level 4 cross-country course designer and equestrian facilities expert, inspected all community equestrian facilities in Macedon Ranges Shire in May-June 2023.

A number of specific issues concerning the condition of arenas and outdoor facilities generally were identified.

In relation to risk management issues, a complete and thorough safety and compliance audit of all cross-country venues in the Shire is required.

Many of the courses require significant work in order to meet current safety standards. This may lead to the ceasing of some activities and/ or closure of facilities.

Lack of water at some venues is also a major horse welfare issue. While this may be being

dealt with by clubs either providing additional supply from a water truck or by asking participants to bring their own.

This becomes a greater issue during the warmer months and on venues that have a higher fire risk.

An outline of key risks and potential actions for each venue is attached in Appendix 3.

### Action Plan Recommendations

- Work with the clubs to complete a thorough safety and compliance audit of all cross-country courses.
- In consultation with clubs, agree on the level of cross-country competition, if any, for each venue and design accordingly, or remove jumps.
- Ensure Emergency Management Plans are provided for each venue.
- Review the dog off-leash areas on the reserves where horse activities occur. Advocate for dogs 'on leash' at equestrian facilities during the development of the Domestic Animal Management Plan (2025–2029). Clubs to also provide additional signage on allocated usage days/times to advise dog walkers of change in conditions (i.e. dog on leash).
- Review water supply at equestrian sites to ensure appropriate access.

### 3. EXISTING FACILITIES

#### 3.1 Overview

The following table summarises the nature and location of equestrian facilities in Macedon Ranges Shire on public land.

Table 3. Nature and location of equestrian facilities in Macedon Ranges Shire

Facility /Reserve Name Property No.	Street Address	Location	Land Ownership	Size	Description of Facilities	Disciplines/ Activities provided for	Access arrangements	User groups
Bullengarook Recreation Reserve Council property number: 1169305 Part Crown description: Lot 1 - LP90243, Lot 1 - TP550318 .	683 Bacchus Marsh Road.	Bullengarook	Council	11.59ha Reserve (Approx. 6.81 ha Equestrian use)	Dressage arena Cross- country course Jumps area Grass arena Sand arena x 2 Loading ramp 34 yards 1 water tap Rodney Harrison Pavilion: Toilet facility Picnic tables Yards, Water tank	Rallies Show Jumping and Dressage Clinics Cross-country.	Reserve open to public. Arenas locked by Clubs.	Bullengarook Adult Riding Club  Bullengarook Pony Club.
IR Robertson Reserve Council property number: 1169086 Crown description: Lot 12, 13, 14 - LP994030 Lot 1 - TP739198.	340 Couangalt Road.	Gisborne South	Council	Approx 12.80 ha Reserve Equestrian use.	Sand arenas x 3 Grass arena x 2 Horse yards x 50 Round yard Cross-country course Club room / office / canteen Accessible toilet Storage and equipment shed Water tanks (rainwater only) x 2	Rallies Dressage Poles Show jumping, Cross-country and Working equitation lessons.	Reserve open to public. Arenas locked by Clubs.	Gisborne & District Adult Riding Club  Gisborne Pony Club  Melbourne Show Jumping Club.

Facility /Reserve Name Property No.	Street Address	Location	Land Ownership	Size	Description of Facilities	Disciplines/ Activities provided for	Access arrangements	User groups for
					Wash-bays x 3, Taps			
Macedon Equestrian Facility - Barringo Recreation Reserve Council property number: 1167437 Crown description: Lot 1 TP169619.	18 Shannons Road.	New Gisborne (Barringo).	Council.	34.26 ha Reserve (Approx. 4 ha Equestrian use)	Sand arenas x 2 Grass arena Cross-country course Show jumping facilities	Games Dressage Show jumping Cross-country.	Gate to reserve and arenas locked.	Macedon Pony Club.
Rollinson Reserve Council property number:1166525 Crown description: 24B/PP2979 25/PP2979	180 Redesdale Road.	Kyneton	Crown – Council COM.	42.15ha Reserve (Approx 21.27 ha Equestrian use)	Clubrooms/canteen/ toilets Cross-country course Show Jumping arena Sand arenas x 3 Round yard Storage shed x 2 Taps x 2 Horse yards. Car and autocross track	Rallies Show Jumping and Dressage Junior development.	Pony Club members have code for gate lock on arenas. Cross-country course open to public use.	Kyneton and District Adult Riding Club  Kyneton Pony Club  Kyneton Car Club.
Woodend Racecourse Reserve Council property number: 1166833 Crown description: Allot. 2001 Allot. 1 Sec 47 Allot. 2 Sec 47 Allot. 3 Sec. 47 Allot. 5 Sec 47	1-27 Forest Street.	Woodend	Crown – Council CoM.	25.66ha Reserve (Approx. 3.44 ha Equestrian use excluding Trail)	Sand arenas x 3 Yards Storage shed Small cross-country area	Rallies - Dressage, Trails and Show jumping Dressage Riders Without Horses Program.	Reserve open to public. Arenas locked by Clubs.	Riddells Creek Adult Riding Club  Woodend Pony Club.

Facility /Reserve Name Property No.	Street Address	Location	Land Ownership	Size	Description of Facilities	Disciplines/ Activities provided for	Access arrangements	User groups
Lancefield Park Recreation Reserve Council property number: 1182663 Crown description: Allot. 20B Sec. C PARISH OF LANCEFIELD.	45 Millers Lane Lancefield Main Reserve entry - Chauncey Street. Equestrian entry off Millers Lane.	Lancefield	Crown – Lancefield Park Recreation Reserve COM	18.35ha Reserve (Approx. 7.27 ha Equestrian use)	Sand arena x 3 Yards Dressage arena Jumps area Cross-country area Tie ups Clubhouse inc. change rooms	Show jumping Dressage Cross-country Eventing Rallies.	Reserve open to public Equestrian and Arenas locked for Clubs.	Lancefield Equestrian Group Lancefield Pony Club Hired by numerous equestrian clubs.
Riddells Creek Pony Club (Candlebark) Council property number: 1186452 Parcel number: Lot 3 PS415315.	282 Sutherlands Road.	Clarkefield	Council own 2.46ha. The club have an agreement to 2026 for use of an adjacent area used for the cross-country and has 2 sand arenas.	Approx 2.46ha Reserve for Equestrian use (not including private land for cross country)	Sand arena x 3 Cross-country track Jumps area Round yard Yards Clubhouse	Show Jumping Cross-country Dressage Grooming Camps Pony Club rallies.	Locked for club use.	Riddells Creek Pony Club Braemar College Hired by other clubs.

### Site overview by facility

The following chapters provide summary overviews of each of the community equestrian facility sites; the land the facilities their use, issues raised in engagement, specific condition issues and priority works and any options for the future of the facility.

The major condition issues and priorities were identified by the equestrian consultant.

## 3.2 Bullengarook Recreation Reserve, Bullengarook



The facility is located just out of Gisborne, at the Bullengarook Recreation Reserve, Bacchus Marsh Road, Bullengarook, Victoria, (60 kilometres northwest of Melbourne). The reserve has an oval, tennis courts and several community buildings.

The 11.59ha reserve (Approx. 6.81ha used for Equestrian) comprises of two parcels of Crown Land, with Council acting as the Committee of Management. A small watercourse runs across the centre of the site and it is zoned Public Park and Recreation, surrounded by Rural Conversation Zone.

This site is a highly scenic and largely a forested reserve with recreation and community facilities scattered throughout.

The equestrian facilities are maintained by the equestrian user groups and Council's Environment Team manage conservation areas onsite.

The site is located on Wurundjeri Woi Wurrung Country.

### Use

The reserve is used for dressage, show jumping, cross-country, eventing, educational.

Bullengarook Adult Riding Club is the key user group at this facility. It is affiliated with HRCVA. Facilities are shared with the Pony Club, but each has their own shed.

The Adult Riding Club has a membership of approximately 45 riders. In 2010, Bullengarook ARC celebrated with Champion Riders Level 2, 3 & 4, taking out three of the five main awards in the HRCVA.

The Bullengarook Pony Club has approximately 25 members.

Rallies are held the second Saturday of the month. Rallies consist of flat and jumping.

Show Jumping events held in May and August with over 100 participants. Events are important to raise money for clubs.

### **Environmental considerations**

There is a Bushfire Management and Environmental Significance overlays over the site. There is good natural shade cover at the site however dead trees and limbs cause concern for users.

The availability of fresh water is limited.

### **Facilities**

The equestrian facilities at Bullengarook Recreation Reserve include:

- A grass arena 40 x 60m
- 1 x sand arena 65 x 55m (Top) 1 x sand arena 60 x 50m (Bottom)
- A cross-country course
- A loading ramp
- 34 yards
- 1 water tap
- A large pavilion (the Rodney Harrison Pavilion). A corrugated iron building with a roller door entry, plus an extension with a roller door and a separate toilet facility associated picnic tables yards and a water tank.

### **Issues raised**

The following issues were raised in the community survey and in interviews with user group representatives:

- Cross-country course improvements/ additional cross-country jumps - Cross-country course has been assessed to make safe.

- Public access/ Pony Club access/Arrangement for casual use.
- Arena improvements/surface of dressage arena/surface maintenance/ and jumping equipment/weed management and facility maintenance.
- Parking.
- Clubrooms/ fix kitchen/canteen, replace sheds.
- Wash down facilities.
- Removal dangerous trees if identified by Council's Environment Tree Program.
- Covered or Indoor arena/Indoor arena for western riding.
- Yards / yards maintenance.
- Safe trail riding paths/safer horse-riding trails through Cobaw, Macedon, Riddells Creek and Bullengarook.
- Perimeter fencing safety and removal of barbed wire.
- Lighting.
- We would love some assistance through funding and hands on work to bring the club rooms from a shed to a safer space for food preparation and comfortable usage place for rallies, events and meetings.
- On the driveway to the Bullengarook Reserve there are a number of trees leaning over road, potholes in driveway.
- Bullengarook is too small for a good size competition.
- Horse day yards need to be next to car parking and club rooms if any redevelopment.
- The septic is leaking, power trips, tank water only.
- Gate at south entry needs to be fixed.
- Priority is sand arenas with Cross-country next priority, to be suitable for competition.

- Opportunity to have Trail Riders based out of there as Reserve is linked to great trails. No Trail Club at Bullengarook
- Opportunity for RDA but limited by number of helpers/volunteers and potentially costs. Special School neighbours' property. They use venue for walks.

### **Condition of facilities, key areas of improvement and priorities**

- The 40m x 60m grass arena has no ground improvements which makes the area unsuitable for use when wet due to safety concerns with slippery footing.
- Eucalyptus tree saplings grow up every year that need to be removed, leaving a dangerous low stump should a horse trip or stand on them.
- The Top Arena has very thick sand at the southern end yet almost none at the northern end. This arena needs to be laser levelled so that the sand coverage is even across the arena. Drainage is also an issue.
- The Bottom Arena has a drainage issue with large puddles forming at the bottom of the arena.
- The cross-country course has numerous safety concerns that need to be addressed due to a lack of maintenance and old age.
- A number of portable fences are also not secured in line with Equestrian Australia and Pony Club Victoria rules.
- The loading ramp is in poor condition and should either be removed or repaired.
- The horse yards are either very boggy or have been damaged by fallen tree limbs. Both aspects require attention.
- The venue is inadequately serviced with water, with only one tap on site. There is no provision for horse wash facilities.

### **Equestrian facility priorities**

- Level both sand arenas so they have a consistent coverage of sand and improve drainage.
- Conduct a safety audit of the cross-country fences.
- Provide a main source of water.
- The internal condition of the pavilion was not observed however from the survey and interview comments it would suggest that this facility needs some basic improvements.

### **Future options for Bullengarook Recreation Reserve**

- Retain as is, but upgrade and maintain existing facilities.
- Develop this site as a base for trail riding to Lerderderg State Park.
- Consider this site and its potential for including some RDA activities.

### **Action Plan Recommendations**

- Undertake a cross-country course safety audit and implement recommendations.
- Review maintenance arrangements between clubs and Council. Clarify roles through an occupancy agreement and clear conditions of use.
- Assist in the design and implementation of online booking and payment system that allows casual access to arena.
- Upgrade surface on each arena to improve drainage.
- Improve parking and road entry to allow all weather access for large vehicles.
- Upgrade perimeter fencing where required.
- Upgrade horse yards.
- Improve water supply for drinking, washing and dust suppression.



01

### Cross Country Course

- Undertake a thorough safety and compliance audit of cross-country course and implement recommendations.
- In consultation with clubs, agree on the level of cross-country competition, if any, and design accordingly, or remove jumps.

02

### Arenas

- Upgrade surface on each arena to improve drainage and remove sapling stumps.

03

### Entries and Parking

- Improve parking and road entry to allow all weather access for large vehicles.
- Safe access from the main road (and, where possible, two road access points in case of events or emergencies).
- Develop a suitable gate/keyed entry.
- Update signage at each equestrian site with a facility name and contact details for information.

04

### Horse yards

- Upgrade horse yards.

05

### Utilities

- Provide access to power and drinking water.
- Improve water supply for drinking, washing and dust suppression.

06

### Loading Ramp

- Remove or repair loading ramp.

07

### Safety and Maintenance

- Review maintenance arrangements between clubs and Council. Clarify roles through an occupancy agreement and clear conditions of use.
- Include the clubhouse in Council asset management plan if other sports clubrooms are included.
- Undertake a building audit on the clubhouse building to ascertain the noncompliant and most urgent works required, and preventative maintenance going forward.
- Ensure building assets meet current requirements for access, fire and electrical safety.
- Essential asset management of the buildings: major preventative maintenance, accessible toilet, compliant kitchen, Essential Safety Measures/fire services.
- Implement a Bushfire Prevention Management program
- Implement Emergency Management Plans for each venue
- Regular mowing and tree management on the site, where these are required.
- Fencing or repairing the perimeter of the site with appropriate materials – for example remove barbed wire.
- Evaluate the dog off lease/on leash requirements at Macedon Ranges Shire equestrian reserves during the development of the Domestic Animal Management Plan (2025-2029)
- Regular mowing and tree management on the site, where these are required.

08

### Management

- Assist in the design and implementation of online booking and payment system that allows casual access to arenas.
- Consider providing a uniform license agreement for users.
- Prepare a detailed table of asset management tasks and for each task, identify who is responsible.

09

### Programs

- Work with RDA to investigate Bullengarook as a site for an RDA facility
- Consider opportunities to establish safe trail riding from Bullengarook Reserve in collaboration with other agencies.
- Consider options to enable camping on, or in the vicinity of the Shire wide facilities.



0 50 100 150m

## Bullengarook Recreation Reserve

Community Equestrian Facilities Plan  
Macedon Ranges Shire Council  
Dja Dja Wurrung Country, Victoria

### LEGEND

- Property Parcels
- 1m Contour
- MRSC Sportsground

- Waterbodies**
- Lake-Dam
- MRSC Footpath
- MRSC Fenceline

- Roads**
- Freeway
- Highway
- Local

- Watercourses**
- High
- Medium
- Low

### 3.3 IR Robertson Reserve, Gisborne South



The dedicated equestrian facility is located just out of Gisborne, at 340 Couangalt Road in Gisborne South.

The 12.8ha reserve comprises of four parcels of Crown Land, with Council acting as the Committee of Management. A small watercourse runs across the northwest corner of the site and it is zoned Public Park and Recreation, surrounded by private properties in a Rural Living Zone. There are no planning overlays over the site.

The equestrian facilities are maintained by the IR Robertson Reserve Management Committee.

Site is located on Wurundjeri Woi Wurrung Country.

#### Use

The grounds are used by the Gisborne Pony Club, Melbourne Show Jumping Club and the Gisborne and District Adult Riding Club. Club members make up the IR Robertson Advisory Committee.

Gisborne Pony Club was established in 1979. The Gisborne & District Adult Riding Club was formed in 1991 and was originally called the Couangalt Riding Club. In 2020 the club merged with the Macedon Ranges Working Equitation and continued operating under the name of Gisborne & District Adult Riding Club.

The Melbourne Show Jumping Club has approximately 150-200 members. The Gisborne Pony Club have approximately 40-50 members. The Gisborne and District Adult Riding Club approximately 70-80 members.

Pony Club rallies are held on the first Sunday of the month. Adult Riding Rallies are held on the 2nd Saturday of the month and often a second rally is held on the 4th Saturday also.

Dressage, poles, show jumping, cross-country and working equitation lessons are held at the grounds. Occasionally winter rallies are held at a private indoor arena.

Show jumping, dressage, cross-country, camp drafting, obstacles, theory, games activities are conducted by the Pony Club. Riding Club participates in show jumping, cross-country, dressage, and 3 phase equitation.

Bookings for the Reserve can be done online through the Reserve Advisory Committee.

Bookings for the cross-country course are available online via Try Bookings.

## Environmental considerations

One of the land parcels on the road frontage is planted with mature pine trees. There is a wind break along the northern boundary. These trees are not protected but are highly valued for shade and shelter.

The rest of the site has an absence of shade and most trees are exotic.

The pavilion has associated tanks, but there is a desire to access recycled water for dust suppression on the arenas and use on the cross-country course.

## Facilities

The outdoor equestrian facilities at IR Robertson Reserve, Gisborne South, include the following:

- Sand arena 65 x 40m with some open grandstand seating
- Sand arena 65 x 80m with some open grandstand seating
- A new 100 x 100m sand arena
- Two grass arenas (30 x 60m and 20 x 60m)
- Horse yards 90 (additional 40 installed in 2025)
- A 30m diameter round yard
- Wash down area (3 bays) and taps around the venue
- Cross-country course (see image - configured for a grade two Pony Club event 2023).

- The grounds are served by a centrally located and relatively new corrugated iron clubrooms/ office and canteen with a small internal veranda, overlooking the sand arenas from the west.
- The site includes an accessible toilet, a large storage and equipment shed with a veranda, and two water tanks, with interest in accessing recycled water.
- There is no manure management system. Manure was observed piled up at the base of pine trees.
- The open grass area on the east and the treed area is used for parking.



Image - outline of a grade 2 Pony Club cross-country layout.

## Issues raised

The following issues were raised in the community survey and in interviews with user group representatives:

- Covered or Indoor arena/Indoor arena for western riding.
- With new arena being built there will be less parking.
- Arena improvements.
- Public access arrangement for casual use.
- Grass maintenance – safety, fill holes, more cross-country jumps/improvements.
- Yards / yards maintenance.
- Camping facilities e.g., showers toilets wash bays.
- Drainage.
- Additional Steel yards.
- Recycled water access to water arenas.
- Lighting.
- Safe trail riding locations without motorbikes/ away from traffic to get to South Gisborne.
- A riding track to get to grounds.
- Track maintenance.
- Public / Clubhouse/ clubrooms.
- Parking - Last event had over 200 competitors.
- Electricity upgrade/Solar arena to cope with the usage required for members.
- Manure collection facilities.
- Stabling.
- Better perimeter fencing.
- More accessible facilities.
- IR Robertson Reserve has the potential to be an amazing equestrian facility. It currently attracts riders from all over Victoria to the events that are offered by the clubs that use our grounds.
- Water supply. There is no supply at all to the Reserve or Clubhouse for drinking. Recycle water would be ok for arena and grounds.
- Signage on road.
- Snakes.
- Turning area into reserve with floats from Couangalt Rd can be dangerous with increasing traffic.
- Indoor arena for all weather use.
- Mowing by Council is pivotal.
- Better maintenance or have permission to do it. E.g. Tree removal.
- Tree planting along fence line - better maintenance partnership - can't do work unauthorised.
- All weather entry road and parking. Need tractor to pull cars out. Remove trees with roots on road.
- Fencing around arena still to be funded.
- More yards - for competitions.
- Recycled water in from the road. Pay 3-4k per year to have water bought in. Purchased two new tanks but buy water every summer.
- Maintain basic infrastructure.
- Venue is muddy in winter, so we need to maintain road for access to club house.
- Gisborne do not have the four arenas required to host a dressage event.

## Condition of facilities, key areas of improvement and priorities

The facilities are generally in very good condition. The larger sand arena however has no base and is unusable in wet conditions with it becoming slippery and soft spots constantly appearing.

Key improvements recommended include:

- The fencing around the grass arenas needs repair due to tree damage.
- All weather access is only from Couangalt Road to the clubrooms.
- More all-weather tracks would be beneficial to allow access to parking.
- Ensure provision of appropriate water supply for event activities.
- A manure management system is required.
- The condition of the pines should be monitored as the senescing pines can lose their large laterals.
- Consideration of more dedicated parking, access to power and water should be considered.

## Equestrian facility priorities

- Maintain base on the 65x80m arena after recent upgrade.
- Construction of more yards/ all-weather access to parking areas to reduce parking pressures.
- Consider a traffic management improvements (turning lane) for entry and egress from the site.

## Future options

- Cross-country course needs to be maintained and developed to competition standard.

## Action Plan Recommendations

- Improve water supply via recycled water for cross-country jumps, dust suppression and toilets (if possible / feasible).
- Improve parking and road entry to allow all weather access for large vehicles.
- Construct additional yards to reduce parking requirements.
- Upgrade the base for 65 x 80m arena.
- Review maintenance arrangements between clubs and Council and clarify roles through a user agreement including clarification of environmental responsibilities and actions.
- Upgrade second entry/exit for emergency access off McGeorge Road.
- Ensure building assets meet current requirements for access, fire and electrical safety.
- Address the manure collection and management.
- Consider the safety of the pine trees as they senesce – as the area is used for yards and parking.
- Update access and gating arrangement to allow casual key holder to use as appropriate. (Cross-country bookings via TRY Booking)
- Additional tree planting for windbreaks and shade.





- 01 Cross-Country Course**
- Undertake a thorough safety and compliance audit of cross-country course and implement recommendations
  - In consultation with clubs, agree on the level of cross-country competition, if any, and design accordingly, or remove jumps

- 02 Arenas**
- Upgrade the base for 65x80m arena. COMPLETED

- 03 Entries and Parking**
- Improve parking and road entry to allow all weather access for large vehicles.
  - Upgrade second entry/exit for emergency access off McGeorge Road.
  - Safe access from the main road (and, where possible, two road access points in case of events or emergencies).
  - Update signage at each equestrian site with a facility name and contact details for information.

- 04 Trees and Shade**
- Consider the safety of the pine trees as they senesce – as the area is used for yards and parking.
  - Additional tree planting for windbreaks and shade.

- 05 Yards**
- Construct additional yards to reduce parking requirements.

- 06 Utilities**
- Provide access to power and drinking water.
  - Improve water supply via recycled water for cross country jumps, dust suppression and toilets.

- 07 Safety and Maintenance**
- Consider undertaking a building audit on the clubhouse building to ascertain the noncompliant and most urgent works required, and preventative maintenance going forward.
  - Ensure building assets meet current requirements for access, fire and electrical safety.
  - Address the manure collection and management.
  - Essential asset management of the buildings: major preventative maintenance, accessible toilet, compliant kitchen, Essential Safety Measures/fire services.
  - Implement a Bushfire Prevention Management program.
  - Ensure Emergency Management Plans and are provided for each venue.
  - Evaluate the dog off lease/on leash requirements at Macedon Ranges Shire equestrian reserves during the development of the Domestic Animal Management Plan (2025-2029)

- 08 Management**
- Review maintenance arrangements between clubs and Council. Clarify roles through an occupancy agreement and clear conditions of use
  - Consider including the clubhouses in Council asset management plan if other sports clubrooms are included
  - Update access and gating arrangement to allow casual key holder to use as appropriate. (Booking of Cross-Country course available via TRY Booking)
  - Consider providing a uniform license agreement for users
  - Prepare a detailed table of asset management tasks and for each task, identify who is responsible.
  - Work with clubs to establish a casual use system for relevant sites.

- 09 Programs**
- Work with RDA to investigate South Gisborne as a site/s for an RDA facility
  - Consider options to enable camping on, or in the vicinity of the Shire wide facilities



Date: 1.11.2024  
 Spatial data: Vicmap  
 Maps: MRSC GIS

## IR Robertson Reserve, Gisborne South

Community Equestrian Facilities Plan  
 Macedon Ranges Shire Council  
 Dja Dja Wurrung Country, Victoria

### LEGEND

- Property Parcels
- 1m Contour
- MRSC Sportsground
- MRSC Fenceline

- Watercourses**
- High
  - Medium
  - Low

- Roads**
- Freeway
  - Highway
  - Local



### 3.4 Barringo Recreation Reserve, Macedon / New Gisborne



The site is located in close proximity to New Gisborne and Macedon, at 18 Shannons Road, New Gisborne.

The 34.26ha reserve (approx. 4 ha for equestrian use) comprises of one parcel of Council land. Equestrian activities take place across a small section of the site, though there are significant limitations of use due to the sites significant cultural and environmental value.

The Macedon Pony Club also has an agreement to use a neighbour's land for part of the cross-country course. It is an awkward shape and largely covers forest and one grass area.

The site is zoned Public Conservation and Resource zone and is surrounded by Rural Conservation zone.

Site is located on Wurundjeri Woi Wurrung Country.

#### Use

The cross-country track was closed for a twelve-month duration in recent years with the site rested to support natural recovery.

The site is used for games, dressage, show jumping cross-country, theory. Use is limited to 20 days per year.

The Macedon Pony Club is the only club using the venue.

The Pony Club has a membership of about 40. The club takes younger children than the neighbouring Riddell club which is considered a more competitive club.

There is no casual use allowed.

#### Environmental and cultural considerations

There are Bushfire Management & Environmental Significance and Significant Landscape overlays for the site.

The Vegetation Protection overlay applies to all the area surrounding the reserve but not the reserve itself.

A small watercourse runs north south through the site.

A part of this site is proximate to the Barringo Creek it is an area of cultural heritage sensitivity.

There is good natural shade cover at the site however perceived dead trees and limbs cause concern for users and impact on safety and the functionality of the site for equestrian activities. The site is included in Environments Tree Program and has programmed tree hazard and mitigation works undertaken adjacent to trails /buildings.

High conservation (some nationally threatened species) and cultural (artefact scatters) values persist throughout the site.

The availability of fresh water is limited.

This site is managed by Council's Environment Team who work closely with the club onsite to foster collaborative efforts in preserving these areas.

## Facilities

The outdoor equestrian facilities at Barringo Reserve, include the following:

- Sand Arena 100 x 60m
- Sand Arena 60 x 40
- Grass Arena 40 x 40
- No yards on site.
- 1 tap
- Cross-country course.

## Issues raised

The following issues were raised in the community survey and in interviews with user group representatives:

- Public access arrangement for casual use.
- Arena improvements.
- Parking (constrained due concentration of cultural heritage artefacts).
- Yards / yards maintenance.
- Public / Clubhouse/ clubrooms.
- Cross-country course improvements.
- Access to trail ridings.
- Track maintenance (conditions as per Councils environment team).
- Junior riders' area.
- Dangerous tree removal (Tree program work focused on trails only).
- Pony Club access to dressage arena.
- Seating areas.
- Request for additional ground usage throughout the year acknowledging limitations due to site value.
- Toilets are in poor condition.
- Can't cut trees off fence line of arenas or remove branches over solar panels (maintenance conditions as per user agreement).
- No whipper snipper use is allowed (manual plant only)
- No rallies on total fire ban days
- Cross-country requires better access - no ambulance access is allowed to the cross-country
- Perimeter fencing in poor condition - Club props it up with sticks. Trees fall over the fence and the club is not allowed to remove. (Note. Fence along Shannons Road and part Barringo Road replaced 2023)
- No power in clubrooms, other than solar panels which are impacted by overhanging branches

- Club meetings all off site due to poor club facilities - Gisborne Police station, McDonalds or via Zoom.

### **Condition of facilities, key areas of improvement and priorities**

- Both sand arenas seem to be up to standard.
- The grass arena appears to be ok, but quite likely gets slippery in wet conditions.
- The cross-country course needs further repair and upgrading to be compliant and safe.
- There are also some tree branches hanging in treetops that require removal. There is also an amount of fallen trees, branches and debris on the tracks that needs to be cleaned up, which is the responsibility of the user groups. There are low hanging branches that are across the entry and access to the property which makes it difficult or impossible for trucks to safely enter the venue.
- Only one tap by the club rooms was evident. This did not appear to be attached to a sufficient water supply for having numerous horses on site for competition days.
- There appears to be a complete reliance on being able to tie horses to trucks and floats for all activities held at the venue.
- This venue seems to have significant issues with the environmental impact of having horses on site, which makes it very difficult to recommend significant future improvements to the equestrian facilities.

### **Equestrian facility priorities**

Resolve the issue of equestrian events on environmentally and culturally sensitive land or find an alternative location for the activities.

### **Future options**

- Club and Councils Environment team work together to manage use of environmentally and culturally sensitive land or consider options for relocating club activities e.g. to adjacent cleared land with cross-country.

### **Action Plan Recommendations**

- Work with the club to discuss future site options if management of equestrian use of environmentally and culturally sensitive land cannot be resolved.
- This site requires a careful balance to manage equestrian activities within the landscape. Activity restrictions are necessary to protect environmental and cultural values. Strong partnerships between Council's environment team and the Macedon Pony club are imperative. Council to provide educational training opportunities for users to foster collaborative efforts in preserving significant areas.
- Undertake a cross-country course safety audit and implement recommendations.





01

### Cross-Country Course

- a. Undertake a thorough safety and compliance audit of cross-country course and implement recommendations.
- b. In consultation with clubs, agree on the level of cross-country competition, if any, and design accordingly, or remove jumps.

02

### Entries and Parking

- a. Safe access from the main road (and, where possible, two road access points in case of events or emergencies).
- b. Update signage at each equestrian site with a facility name and contact details for information.
- c. Develop a suitable gate/keyed entry.

03

### Utilities

- a. Provide access to power and drinking water.

04

### Safety and Maintenance

- a. Ensure Emergency Management Plans and are provided for each venue.
- b. Essential asset management of the buildings: major preventative maintenance, accessible toilet, compliant kitchen, Essential Safety Measures/fire services.
- c. Regular mowing and tree management on the site, where these are required.
- d. Implement a Bushfire Prevention Management program.
- e. Evaluate the dog off lease/on leash requirements at Macedon Ranges Shire equestrian reserves during the development of the Domestic Animal Management Plan (2025-2029)

05

### Management

- a. Provide a uniform license agreement for users
- b. Prepare a detailed table of asset management tasks and for each task, identify who is responsible.
- c. Include the clubhouses in Council asset management plan if other sports clubrooms are included.
- d. Investigate options for relocating club activities away from environmentally sensitive land, e.g., to adjacent cleared land with cross country.



0 50 100 150m

Date: 1.11.2024  
 Spatial data: Vicmap  
 Maps: MRSC GIS

## Barringo Recreation Reserve Macedon / New Gisborne

Community Equestrian Facilities Plan  
 Macedon Ranges Shire Council  
 Dja Dja Wurrung Country, Victoria

### LEGEND

--- 1m Contour

□ Property Parcels

□ MRSC Sportsground

□ MRSC Fenceline

Roads

--- Local

Waterbodies

■ Lake-Dam

Watercourses

— High

— Medium

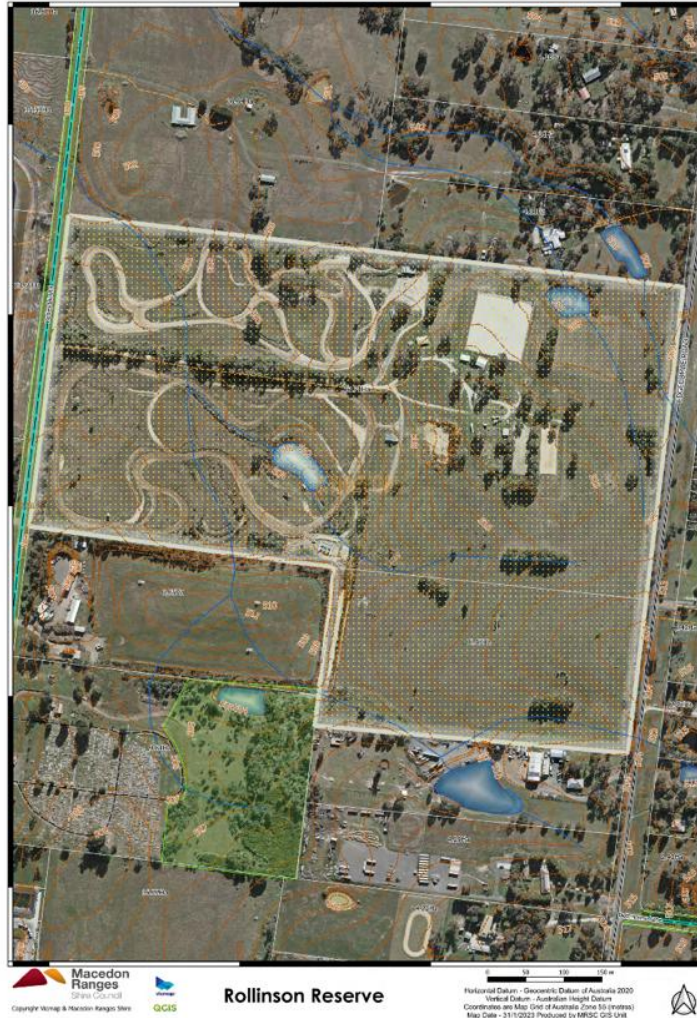
— Low



**Macedon Ranges**  
 Shire Council



### 3.5 Rollinson Reserve, Kyneton



The large 42.15ha reserve (approx. 21.27 ha Equestrian use) is situated off Redesdale Road to the north of the Kyneton township. The site abuts Edgcombe Rd, but there is no access to it from this road. The entry is via a very narrow road off Redesdale Rd.

It is two parcels of Council land, including part of an old tip site. There are two main watercourses running through the property and it is served by a dam, the only one of the Macedon Ranges facilities.

The site is zoned Public Park and Recreation, and is surrounded by Farming Zone to the north, Public Use Zone (Service and Utility) to the west, Public Use (Local Government) and Industrial zone to the south, and Rural Living Zone to the east.

The site is located on Taungurung Country.

#### Use

The Kyneton equestrian facility is home to the Kyneton Pony Club, and the Kyneton and District Adult Riding Club. The clubs have a memorandum of understanding of utilisation. There are also two car clubs based at the reserve. Use for equestrian activities is constrained by the noise and dust from the motor sports clubs, so they tend to alternate use over two weekends.

Equestrian clubs work with car clubs when events are on. Membership of the resident equestrian clubs is currently low.

There is shared use of the clubrooms, toilets, shed, show jumping arena, and dressage arena.

Riders have a code for arenas for access.

## Environmental considerations

The first watercourse commences in the northwest corner which splits into two, one runs north south and the other runs northeast. The second watercourse commences in the northeast corner and runs east.

There is a Bushfire Management and Environmental Significance overlays for the site.

There is a dam on the site.

There is some natural shade cover at the site. Additional plantings would provide further sun and wind protection. Additional plantings between the equestrian precinct and car clubs may help reduce dust and noise to provide a better environment for participants and horses.

The clubhouse provides some sun protection for those viewing the large arena.

## Facilities

The outdoor equestrian facilities at Rollinson Reserve, include the following:

- Clubhouse
- Sand Arena 80 x 80m
- Two sand arenas 60 x 20m
- Round yard, approximately 18m diameter
- Cross-country course
- Two taps
- Approximately 60 horse yards
- The sand arenas, round yard and horse yards appear to be up to acceptable standard.

This venue has the best size for a cross-country course of the sites reviewed and is served by dam.

## Issues raised

The following issues were raised in the community survey and in interviews with user group representatives:

- Covered or Indoor arena/Indoor arena for western riding.
- Cross-country course improvements.
- Arena improvements/surface of dressage etc.
- Fenced section for dog walkers/ remove dog area from the reserve due to safety concerns (major issue).
- Parking/driveway /entrance access.
- Public access arrangement for casual use / dressage arena is not available to the public.
- Camping facilities e.g. showers toilets wash bays.
- Better maintenance (including yards).
- Trail rides.
- Would love safe marked trails with parking available.
- Clubrooms.
- Education for cyclists.
- Keep horses out of an environmentally sensitive land.
- Fencing along Edgecombe Road and Rollinson Reserve.
- Open access means people can ride without paying and then Clubs must repair/ replace and clean up. Security is a problem - received grant from Council for equipment and it was stolen.
- More arenas would be good to attract more clubs.
- There is no power in Adult Riders shed. Another gate access would assist.
- Riding for the Disabled is an opportunity to consider.

- Online booking system for use of the Cross-country course. Some damage occurring. Solution is charge public for use of horse areas.
- Maintenance (Grants for the club and then the club is happy to continue with ongoing maintenance).
- Scheduled slashing of Rollinson Reserve, rather than the current ad hoc process. This would greatly improve maintenance planning.
- Cross-country course is in a state of disrepair. Club money required. Course open to public therefore issues with jumps.
- Kyneton District Trail Riders Club not based at the reserve —must ride from Glenlyon Reserve in Hepburn. Use Glenlyon Reserve and Trentham for annual camping/rising event. Need easy access to a trail.
- The facilities are incredibly important for the public, not just for Pony Club or Adult Riders Club.
- There is a lack of reserves/arenas/ in area. Lack of trail riding spaces – Currently use Metcalf State Forest. Use to ride at Bald Hill until kicked out. Use to ride in Cobaw Range but too many motor bikes now.
- Playground for non-riders.
- Waste Management.
- Kitchen, water and electricity upgrades.
- Stalls.

### **Condition of facilities, key areas of improvement and priorities**

The sand arenas, round yard and horse yards appear to be up to acceptable standard.

- The cross-country course needs significant maintenance. An upgrade is required to be of a safe and compliant standard with Equestrian Australia and Pony Club Victoria Rules

- The water jump needs serious and urgent work and should not be used until it has been rectified
- The venue appears to be very inadequately supplied with water for the number of yards and size of the facility
- There is no permanent wash down bays on a venue that is used for full length cross-country competitions
- All weather vehicle access to parking areas is required.
- Weed eradication (Gorse and Blackberry)

### **Future options**

- Although large, the future of the site is constrained by poor access for floats and the presence of the car clubs
- Options to improve access and to use the site on all weekends and reduce the conflict with car clubs should be immediately investigated, to ascertain the long-term viability of investing at the site
- Investigate the option to upgrade and maintain the cross-country course to a competition level, in the longer term if use and access arrangements can be addressed
- A review of the current dog off-leash arrangements at the reserve was conducted during the development of the Domestic Animal Management Plan (2026-2029). The reserve now has designated off leash areas with specific conditions to avoid horses and equestrian users.

## Action Plan Recommendations

- Investigate alternative access to the site.
- Investigate relationship between user group activities to ascertain long term viability of the site before any major upgrades.
- Review maintenance arrangements between clubs and Council. Clarify roles through an occupancy agreement and clear conditions of use.
- Improve parking and road entry to allow all weather access for large vehicles.
- Ensure building assets meet current requirements for access, fire and electrical safety.
- Assist in the design and implementation of online booking and payment system that allows casual access to arenas.
- Increase water access for drinking, dust suppression and wash down area.
- Construct washdown bays.
- Consider the future of the current off leash area. If venue remains as a 'timed dog off leash area', consider a fenced enclosure for a portion of the reserve, away from equestrian activities or relocate the dog area.
- Upgrade external fencing where required, particularly along Edgecombe Road.
- Plant a screen and windbreak between car clubs and equestrian areas to minimize conflict and sightlines.
- Clubs to partner with Council in mitigating the spread of weeds to farming and conservation areas.



Image – Entrance to Rollinson Reserve



01

**Cross-Country Course**

- a. Work with the clubs to complete a thorough safety and compliance audit of cross-country course.
- b. Upgrade and maintain the cross-country course to a competition level, in the longer term if use and access arrangements can be addressed.

02

**Entries and Parking**

- a. Improve parking and road entry to allow all weather access for large vehicles.
- b. Safe access from the main road (and, where possible, two road access points in case of events or emergencies)
- c. Develop a suitable gate/keyed entry.
- d. Update signage at each equestrian site with a facility name and contact details for information.

03

**Trees and Shade**

- a. Planting a screen and windbreak between car clubs and equestrian areas to minimise conflict and sightlines.
- b. Regular mowing and tree management on the site, where these are required.

04

**Utilities**

- a. Increase water access for drinking, dust suppression and wash down areas.
- b. Provide access to power and drinking water

05

**Washdown bays**

- a. Construct washdown bays

06

**Safety and Maintenance**

- a. Review maintenance arrangements between clubs and Council. Clarify roles through an occupancy agreement and clear conditions of use.
- b. Ensure building assets meet current requirements for access, fire and electrical safety.
- c. If venue remains as a 'timed dog off leash area', consider a fenced enclosure for a portion of the reserve, away from equestrian activities.
- d. Upgrade external fencing where required, particularly along Edgcombe Road.
- e. Essential asset management of the buildings: major preventative maintenance, accessible toilet, compliant kitchen, Essential Safety Measures/fire services.
- f. Implement a Bushfire Prevention Management program
- g. Fencing or repairing the perimeter of the site with appropriate materials – for example remove barbed wire.
- h. Consider undertaking a building audit on the clubhouse building to ascertain the noncompliant and most urgent works required, and preventative maintenance going forward
- i. Evaluate the dog off lease/on leash requirements at Macedon Ranges Shire equestrian reserves during the development of the Domestic Animal Management Plan (2025-2029).

07

**Management**

- a. Assist in the design and implementation of online booking and payment system that allows casual access to arenas.
- b. Consider including the clubhouses in Council asset management plan if other sports clubrooms are included.
- c. Consider providing a uniform license agreement for users.
- d. Prepare a detailed table of asset management tasks and for each task, identify who is responsible
- e. Work with clubs to establish a casual use system for relevant sites.
- f. Ensure Emergency Management Plans and are provided for each venue.

08

**Programs**

- a. Consider options to enable camping on, or in the vicinity of the facilities.



**Rollinson Reserve, Kyneton**  
 Community Equestrian Facilities Plan  
 Macedon Ranges Shire Council  
 Dja Dja Wurrung Country, Victoria

**LEGEND**

- |                   |             |              |
|-------------------|-------------|--------------|
| 1m Contour        | Roads       | Watercourses |
| Property Parcels  | Local       | High         |
| MRSC Sportsground | Waterbodies | Medium       |
| MRSC Fenceline    | Lake-Dam    | Low          |

Date: 22.12.2023  
 Spatial data: Vicmap  
 Maps: MRSC GIS

## 3.6 Woodend Racecourse Reserve, Woodend



Macedon Ranges Shire Council  
Woodend Racecourse Reserve  
Copyright Woodend & Macedon Ranges Shire  
GCIS  
Horizontal Datum - Geocentric Datum of Australia 2020  
Vertical Datum - Australian Height Datum  
Coordinate and Map Unit of Australia (Zone 55 GDA94)  
New Date - 31/12/2023 Produced by MRCIS GIS Unit

The 25.66ha reserve (Approx. 3.44 ha Equestrian use excluding trail) is located on Forest Street in Woodend. It is made up of five parcels of Crown Land with a small section in the southeast corner under Council ownership. There is a small watercourse in the northwest quadrant.

The site is zoned Public Conservation and Resource Zone (PCRZ) and surrounded by Public Conservation and Resource to the north, Farming to the west and Neighbourhood Residential to the east. It is also subject to several planning overlays, including Environmental Significance, Inundation, Vegetation Protection, Heritage (HO344) and Cultural Heritage.

The site is located on Dja Dja Wurrung Country.

### Use

Woodend Pony Club is located at the Racecourse Reserve. Equestrian activities provided include general horsemanship, jumping, dressage, games through to competition. It is a very small club that encourages members to be supportive of each other and creates a fun and safe environment for all to learn and enjoy equestrian. Pre covid the club had 50 members with 18 currently (2023). Club is running a 'Riders Without Horses program'.

Riddells Creek Adult Riding Club is also based at the Reserve. The Club was established in March 2001. The Club is operated by a Committee of Management and has approximately 20 members (2023), ranging from beginners to Level One competing in everything from dressage, combined training, horse trials, to navigation rides. The club provides for riders of all levels to socialise and participate in a variety of activities and events.

### Facilities

The outdoor equestrian facilities at the Reserve, include the following

- Sand Arena 60 x 20m

- Two Sand Arenas 60 x 80m
- Grandstand arena 35 x 15m
- 70 yards – 47 around arena and 23 yards in car park.
- There are two taps on site.
- Cross-country course

### Environmental considerations

There is an Environmental Significance overlay, Boundary and Vegetation Protection overlay.

All or part of this site is an area of cultural heritage sensitivity, due to the proximity to the creek.

The cross-country area adjacent to the creek is a low-lying area and often unusable in wet weather.

The equestrian precinct has no shade for participants or horses.

### Issues raised

The following issues were raised in the community survey and in interviews with user group representatives:

- Arena and yard improvements/ maintenance.
- Covered or Indoor arena/Indoor arena for western riding.
- Cross-country course/ more cross-country jumps.
- Public access arrangements for casual use.
- Safe - trail riding tracks.
- Equipment sheds (Old equipment sheds need replacing and moving closer to arenas).
- Pony Club access to dressage arena.
- Better ground drainage.

- Shade/Shade trees, very exposed site on hot days.
- Seating at arenas.
- Needs a horse wash.
- Dog off leash a major issue.
- Shared storage - location unsuitable and leaks following rain. Not secure, expensive equipment inside. Council have advised maintenance of shed is a club requirement.
- Public toilets are a major issue - breach child safe requirements. Door faces away from Reserve.
- Clubrooms - kitchen outdated, storage.
- Vandalism of Cross-Country jumps – ropes.
- Would consider alternate locations including private provides.
- Existing infrastructure adequate but presentation lacks across Reserve.
- Issues over years with neighbours - damage, conflict with dogs.
- No use outside of Council allocation days / times.
- Members need keys to access. People would love easier access to arenas but not available.
- Use yards onsite but dilapidated and not safe. Rails splitting, white wire sagging.
- Yards a priority.
- It's unique having an equestrian ground in the middle of town in Woodend.
- Build an arena for the good of equestrian and the townships a large money-making project Woodend or Kyneton central to in all interstate visitors.
- I grew up riding my pony around Woodend. I think it should be encouraged and 'allowed' for us to ride our horses around.

- With a shift in demographics seeing parents with very young children being able to provide safe areas for teaching small children to ride would be a priority for Woodend Pony Club.

### **Condition of facilities, key areas of improvement and priorities**

- The facilities at Woodend need a considerable amount of maintenance.
- The facility would appear to be underutilised, possibly due to it not being maintained.
- The 60 x 20m arena is lower than the ground surrounding it and does not drain well.
- The larger 60 x 80m arenas are also poorly drained, and only half of one arena is used with any regularity.
- The lower yards are unused and need some repairs.
- If the grandstand arena is a designated equestrian area, it requires additional sand topping.
- The cross-country course requires significant maintenance, with most jumps in very poor condition. During the wet periods, it is recommended that the cross-country area is closed for use due to ground damage. The water jump has been well built but is falling into disrepair and shouldn't be used until it has been refurbished.
- This venue also would appear to have issues with non-complimentary multi uses with members of the public walking dogs both on and off lead in the same area as equestrian pursuits.

### **Equestrian facility priorities**

Given the identified constraints at this site (size, condition of infrastructure, impact from other sports and dog walkers), an alternative venue for equestrian activity was explored during the development of this plan.

Council engaged with the current Woodend Racecourse Reserve equestrian clubs to investigate opportunities for relocation and/or partnerships with other landowners, private facilities, potential new developments or other community equestrian facilities. However, an immediate fit for purpose alternative was not identified.

The completed Woodend Racecourse Reserve Master Plan has outlined a vision for retaining the Equestrian clubs and activity at the reserve in a limited capacity, while supported by member numbers.

### **Action Plan Recommendations**

- Support recommendations for equestrian at this site contained in the completed Woodend Racecourse Reserve Master Plan.
- Closure of the cross-country course and retain area for open space.
- Equestrian to be limited to arena activities only.
- Turn over the sand in the arenas to address weed growth.
- Retain the two eastern sand arenas and install spectator seating.
- Western sand arena to be removed for proposed rectangular pitch (soccer/rugby).
- Create buffer (landscaping / fencing) between retained sand areas and the proposed rectangular pitch (soccer/rugby).
- Former stables/existing storage shed - Replace storage in a more accessible location. Retain horse yards subject to demand.
- Construct a second access point on Forrest St to further assist equestrian users with float access.
- Implementation of online booking and payment system that allows casual access to arenas.



01

**Location**

- a. Council engaged with the current Woodend Racecourse Reserve equestrian users to investigate opportunities for relocation and/or partnerships with other landowners, private facilities, potential new developments, or other community equestrian facilities. However, an immediate fit for purpose alternative was not identified.

02

**Cross-Country Course**

- a. Close the cross-country course and retain area for open space.
- b. Equestrian to be limited to arena activities only.

03

**Entries**

- a. Consider a second access point in Forest St to further assist equestrian users with float access.
- b. Develop a suitable gate/keyed entry to arenas.
- c. Update signage with a facility name and contact details for information.

04

**Arenas**

- a. Turn over the sand in the arenas to address weed growth.
- b. Retain the two eastern sand arenas and install spectator seating.
- c. Western sand arena to be removed for proposed rectangular pitch (soccer/rugby).
- d. Create buffer (landscaping/fencing) between retained sand arenas and the proposed rectangular pitch (soccer/rugby).

05

**Storage**

- a. Former stables/existing storage shed – replace storage in a more accessible location.

06

**Yards**

- a. Retain horse yards subject to demand.

**Safety and Maintenance**

- a. Ensure Emergency Management Plans and are provided for each venue.
- b. Evaluate the dog off leash/on leash requirements at Macedon Ranges Shire equestrian reserves during the development of the Domestic Animal Management Plan (2025-2029).
- c. Consider undertaking a building audit on the clubhouse building to ascertain the non-compliant and most urgent works required, and preventative maintenance going forward-regardless of who does the work.
- d. Regular mowing and tree management on the site, where these are required.

**Management**

- a. Assist in the design and implementation of online booking and payment system that allows casual access to arenas.
- b. Include the clubhouses in Council asset management plan if other sports clubrooms are included.
- c. Essential asset management of the buildings: major preventative maintenance, accessible toilet, compliant kitchen, Essential Safety Measures/fire services.
- d. Implement a Bushfire Prevention Management program.
- e. Consider providing a uniform license agreement for users.
- f. Prepare a detailed table of asset management tasks and for each task, identify who is responsible.
- g. Work with clubs to establish a casual use system.



Date: 03.02.2026  
 Spatial data: Vicmap  
 Maps: MRSC GIS

**Woodend Racecourse Reserve  
 Woodend**

Community Equestrian Facilities Plan  
 Macedon Ranges Shire Council  
 Dja Dja Wurrung Country, Victoria

**LEGEND**

- Rail line
- 1m Contour
- Property Parcels
- MRSC Playground Sites
- MRSC Sportsground

- Roads**
- Freeway
- Highway
- Local
- Waterbodies**
- Lake-Dam

- Watercourses**
- High
- Medium
- Low
- Easement

- MRSC Drainage Pit
- MRSC Drainage
- MRSC Kerbs
- MRSC Footpath
- MRSC Fenceline



## 3.7 Lancefield Park Recreation Reserve, Lancefield



Lancefield Park Recreation Reserve is 18.35ha in size (Approx. 7.27 ha Equestrian use) and is located off Chauncey Street in Lancefield. It is a single parcel of Crown Land and the facilities on this site are managed by a volunteer Committee of Management.

The equestrian area occupies only a small section of the reserve and includes a dressage arena, cross-country track and jumps area. The reserve also includes a variety of facilities, such as sports ovals, tennis/netball courts, a bowling green, and a play space. A separate parcel of Council land borders the southern edge of the reserve and is currently leased to the Lancefield Harness Club.

The site is zoned Public Park and Recreation with Farming to the west and General Residential to the east.

The site is utilised by local residents and hosts regional events.

The equestrian facilities are in a beautiful setting with long avenues of large mature exotic trees. The site is nicely presented and change facilities very clean and tidy.

The site is located on Wurundjeri Country.

### Use

Lancefield Equestrian Group (LEG) and Lancefield Pony Club utilise the facilities at Lancefield Park.

Lancefield Equestrian Group has nearly 100 members. It has rallies every 2nd Sunday and 4th Monday. Competitions are generally 100 plus with rallies of approximately 20 participants. The Pony Club has approximately 30 members. The clubhouse is shared with between both groups.

Disciplines catered for include dressage, show jumping, cross-country - (rally use only), eventing. Four dressage arenas are required for competitions which this site has.

Clubs use grassed area for floats, cars, show jumping. Six tie ups, and heated horse wash. The venue is hired by clubs throughout the region including Gisborne, Kyneton, Bolinda, Macedon, Bullengarook and Seymour and a fee is provided to LEG to set up arenas.

## Environmental considerations

A small watercourse runs east west through the site. A water area is located on the south boundary.

The entire site has a Heritage overlay.

All or part of the site is an area of cultural heritage sensitivity.

The southern portion of Lancefield Park is referred to as Lancefield Swamp. The site contains one of the richest deposits of megafauna fossils in Australia with the bones of thousands of animals preserved in the clay.<sup>3</sup> (Refer Appendix 6). Any activities in this area of the reserve must not be detrimental to the site's significance and in accordance with the Lancefield Recreation Reserve Master Plan 2024.

Given the age of the mature exotic trees in the park, planning for their eventual replacement should be considered in the long-term following an arborist assessment.

## Facilities

The outdoor equestrian facilities at Lancefield Park Recreation Reserve include the following:

- Sand arena 60 x 20m fenced
- Sand arena 100 x 70m unfenced
- Sand arena 60 x 40m unfenced

- 44 yards
- Two horse wash bays
- Cross-country course.

The facilities are served by a large well organised shed, meeting room and toilet and change including an accessible toilet.

The yards on the west are nicely shaded from the sun.

## Issues raised

The following issues were raised in the community survey and in interviews with user group representatives:

- Arena improvements/surface of arenas /surface maintenance/ jumping equipment.
- Cross-country course/ improvements.
- Covered or Indoor arena/Indoor arena for western riding.
- Public access arrangement for casual uses.
- Parking/driveway access.
- Trail rides.
- More yards / better yards maintenance.
- Fenced section for dog walkers.
- Camping facilities with showers and wash bays.
- Safety/signage.
- More water points.
- Better care of nature.
- Separated from bikes and cars.

---

<sup>3</sup> The timing and cause of megafauna mass deaths at Lancefield Swamp, south-eastern Australia - Quaternary Science Reviews. August 2016

- Additional space.
- There is some conflict with users on the wider ground; parking, dog use and the footy siren etc that spooks horses.
- Parking is a problem on event days. Had an agreement with trotters and put money into developing a central area- but conflict in use times.
- Lancefield is a prime location to develop an Equestrian hub. Close enough to the Hume and Calder, it would service a great deal of local and riders from further afield.
- Yards are plenty for rallies but not enough for Competitions, so they split between morning and afternoon.
- MRSC do not contribute to Lancefield ground upkeep, like at other grounds. (Note: MRSC are not the Committee of Management of Lancefield Park unlike other reserves on DEECA land. MRSC provide the DEECA committee of management - Lancefield Park Committee, around \$20,000 annually to maintain the facilities at Lancefield Park)
- Other clubs have identified Lancefield have no room for a cross-country course.
- Issues with management/ communication by the committee management when external clubs hire.
- Lancefield needs a larger area so that the Pony Club can grow (would like 6 arenas)
- An agreement some years ago with harness club that 1st and 2nd Sunday of month between 10 am and 1.00 pm there would be no harness horses on track is no longer adhered to by harness club.

### **Condition of facilities, key areas of improvement and priorities**

- Except for the cross-country course, the facilities at this venue appear to be up to standard

- The cross-country course however does require some work to be compliant and safe
- Some portable fences are not secured, some are no longer compliant with current standards
- The sunken road/water complex needs serious repair to the retaining walls. This fence should not be used until such time as repairs have been made.

### **Equestrian facility priorities**

- Another set of wash bays for the number of horse yards on site could be a consideration also given there are clearly several horses for competition days
- Undertake a cross-country course safety audit and consider ongoing provision of cross-country at this site. Should it remain, implement audit recommendations
- Permanent fencing around one or more of the sand arenas.

### **Future options**

- Planting a screen and windbreak between harness and equestrian areas to minimize conflict and sightlines and consider investigating parking arrangements.
- Addressing the conflict with dogs off leash along walking track adjacent to equestrian facilities via signage or rerouting walking track.
- Formalising relationship with the harness precinct to improve parking access to the middle of the trotting track or reconsider the long-term viability of harness training on the Council land to the south of the precinct.
- Megafauna area to be managed as per recommendations of endorsed Lancefield Park Recreation Reserve Master Plan.

### Action Plan Recommendations

- Support recommendations for equestrian site contained in the endorsed Lancefield Park Recreation Reserve Master Plan which includes the re-alignment of the equestrian area fence and park pedestrian path.
- Support upgrade of surface arenas.
- Update access and gating arrangement to allow casual use.
- Improve parking to allow all weather access for large vehicles.
- Improve water supply for drinking, washing and dust suppression.
- Construct additional wash down bays.



Image – Lancefield Park Recreation Reserve



01

### Cross-Country Course

- Work with the clubs to complete a thorough safety and compliance audit of cross-country course.
- In consultation with clubs, agree on the level of cross-country competition, if any, and design accordingly, or remove jumps.
- Protect megafauna area in cross country precinct through the development of a Management Plan for the area

02

### Arenas

- Support upgrade of surface arenas

03

### Entries and Parking

- Improve parking to allow all weather access for large vehicles and access to trotting track on event days through a formal agreement.
- Maintain two road access points in case of events or emergencies).
- Develop a suitable gate/keyed entry.
- Update signage at each equestrian site with a facility name and contact details for information.

04

### Trees and Shade

- Planting a screen and windbreak between harness and equestrian areas to minimize horse distraction during dressage.
- Protect existing tree plantations and plan for replacement in the long term

05

### Washdown Bays

- Construct additional wash down bays x 2

06

### Safety and Maintenance

- Address the conflict with dogs off leash along walking track adjacent to equestrian facilities via signage or rerouting walking track.
- Consider undertaking a building audit on the clubhouse building to ascertain the noncompliant and most urgent works required, and preventative maintenance going forward.
- Implement a Bushfire Prevention Management program.
- Fencing or repairing the perimeter of the site with appropriate materials – for example remove barbed wire.
- Regular mowing and tree management on the site, where these are required.
- Essential asset management of the buildings: major preventative maintenance, accessible toilet, compliant kitchen, Essential Safety Measures/fire services.
- Prepare a detailed table of asset management tasks and for each task, identify who is responsible.
- Ensure Emergency Management Plans and are provided for each venue.
- Evaluate the dog off lease/on leash requirements at Macedon Ranges Shire equestrian reserves during the development of the Domestic Animal Management Plan (2025-2029)

07

### Management

- Assist in the design and implementation of online booking and payment system that allows casual access to arenas.
- Consider including the clubhouses in Council asset management plan if other sports clubrooms are included.
- Consider providing a uniform license agreement for users.
- Work with clubs to establish a casual use system for relevant sites.
- Consider options to enable camping on, or in the vicinity of the shire-wide facilities.

## Lancefield Park Recreation Reserve Lancefield

Community Equestrian Facilities Plan  
Macedon Ranges Shire Council  
Dja Dja Wurrung Country, Victoria

### LEGEND

- 1m Contour
- Property Parcels
- MRSC Playground Sites
- MRSC Sportsground
- Potential Megafauna Area

- Freeway
- Highway
- Local

- Waterbodies
- Lake-Dam
- Watercourses
- High
- Medium
- Low

- MRSC Drainage Pit
- MRSC Drainage
- MRSC Kerbs
- MRSC Footpath
- MRSC Fenceline



0 50 100 150m

Date: 1.11.2024  
Spatial data: Vicmap  
Maps: MRSC GIS



### 3.8 Riddells Creek Pony Club (Candlebark), Riddells Creek / Clarkefield



Macedon Ranges Shire Council  
 Riddells Creek Pony Club  
 Horizontal Datum - Geocentric Datum of Australia 2020  
 Vertical Datum - Australian Height Datum  
 Coordinate are MGA Grid of Australia Zone 52 (Meters)  
 Map Date - 31/1/2023 Produced by MRSC GIS Unit

Riddells Creek Pony Club or 'Candlebark', is located at 282 Sutherland Rd Clarkefield, approximately 50 kilometres northwest of Melbourne.

The site consists of two parcels of land. One is a Council Reserve of 2.46ha situated off Sutherlands Road in Clarkefield, comprising of one arena. The site is zoned as Farming.

Adjacent to the Council Reserve is private land (approximately 40ha) also utilised by the club with an arrangement from a local family for equestrian use. This larger parcel contains the small club house, several fenced grass areas, a larger sand arena and a cross-country course and is zoned as Farming.

There is a Low-Density Residential zone to the north of the site in Riddells Creek which is separated by Sutherlands Road.

The site is located on Wurundjeri Country.

#### Use

The Riddells Creek Pony Club is the only club based at the facility.

The Riddells Creek Pony Club was 'Pony Club Victoria's Club of the year in 2023' and top 3 Australia wide, whilst also winning 'Coach of the year' in Australia.

The 2021 PCV Horse Trials Festival were hosted at Riddells Creek Pony Clubs grounds with 280 entries.

The facilities are leased to other groups.

Riddells Creek Trail Horse Riding Club do not use the Pony Club facilities.

Riddells Creek Adult Riding Club do not use the Pony Club facilities and are based at the Woodend Racecourse Reserve, after moving from the Riddells Creek Recreation Reserve a number of years ago.

## Environmental considerations

There is an Environmental Significance overlay on the entire site.

The equestrian precinct has no shade for participants or horses, except one large, protected tree in amongst the arenas.

The site would benefit from a detailed planting plan to provide shade and wind protection.

## Facilities

- Sand arena 150 x 75m unfenced
- Sand arena 130 x 74m fenced
- Sand arena 58 x 28m unfenced
- Round yard
- 87 yards
- Cross-country course
- Clubhouse.

## Issues raised

The following issues were raised in the community survey and in interviews with user group representatives:

- Better arena surfaces at Riddells Creek Pony Club.
- Improve cross-country course including more jumps.
- Covered /all-weather arena for western riding.
- Cross-country course improvements including additional jumps.
- Parking/driveway/parking access particularly in winter.
- Waste disposal.
- More shade trees planted.

- Funding for coaches.
- Overflow car parking not accessible in wet weather.
- Upgrade sand arena and additional sand.
- Club rooms.
- General maintenance.
- Show jumping equipment.
- Expansion of grounds to cater for Equestrian Australia Events.
- Club must pay for rubbish removal. 20 bins last week after an event.
- Need to upgrade yards - replace timber with steel.
- Grounds generally ok in wet - overflow car park could do with some gravel.
- Maintenance on cross-country is big - 15 tonne of rock on holes after members used course on wet day (not on Council land).
- Arena improvements/ dressage arena/ maintenance.
- There are no official Equestrian Australia (EA) dressage event locations near or in the Macedon Ranges area, or a great facility like the Riddells Creek Pony Club could be better adapted with better dressage surfaces to conduct EA official dressage competitions, alongside Pony Club and open competitions.

## Condition of facilities, key areas of improvement and priorities

- All outdoor facilities at this venue appear to be up to standard.
- The venue and facilities appear to be well maintained.
- The cross-country area is on private land that is leased to the Pony Club to use.

- There is no all-weather vehicle access around the horse yards and parking area.

### **Equestrian facility priorities**

- All weather access tracks established around the yards and parking areas.
- An additional designated wash down area for major competition days.

### **Future options**

- Investigate options with the club and neighbouring landowner to secure long-term tenure of venue, which will then enable further public investment on the site.

### **Action Plan Recommendations**

- Update yards to improve security and safety
- Provide an all-weather access track around the yards and parking areas
- Provide an additional designated wash down area for major competition days
- Complete a detailed tree planting plan to provide shade and wind protection
- Club to investigate options with neighbouring landowner to secure long-term tenure of venue, which may then enable further public investment on the site.



### 01 Cross-Country Course

- Work with the clubs to complete a thorough safety and compliance audit of cross-country course.
- In consultation with clubs, agree on the level of cross-country competition, if any, and design accordingly, or remove jumps.

### 02 Yards

- Update yards to improve security and safety.
- Provide an all-weather access track around the yards and parking areas.

### 03 Washdown bays

- Provide an additional designated wash down area for major competition day.

### 04 Tree Planting and Shade

- Complete a detailed tree planting plan to provide shade and wind protection.

### 05 Entries and Parking

- Safe access from the main road (and, where possible, two road access points in case of events or emergencies).
- Develop a suitable gate/keyed entry.
- Update signage at each equestrian site with a facility name and contact details for information.

### 06 Safety and Maintenance

- Undertake a building audit on the clubhouse building to ascertain the noncompliant and most urgent works required, and preventative maintenance going forward.
- Regular mowing and tree management on the site, where these are required.
- Essential asset management of the buildings: major preventative maintenance, accessible toilet, compliant kitchen, Essential Safety Measures/fire services
- Implement a Bushfire Prevention Management program.
- Fencing or repairing the perimeter of the site with appropriate materials – for example remove barbed wire.
- Ensure Emergency Management Plans and are provided for each venue.
- Evaluate the dog off lease/on leash requirements at Macedon Ranges Shire equestrian reserves during the development of the Domestic Animal Management Plan (2025-2029)

### 07 Management

- Investigate options with the club and other landowner to secure long term tenure of venue, then enable further public investment on the site.
- Consider providing a uniform license agreement for users.
- Prepare a detailed table of asset management tasks and for each task, identify who is responsible.
- Work with clubs to establish a casual use system for relevant sites.
- Consider options to enable camping on, or in the vicinity of the shire-wide facilities.



Date: 1.11.2024  
 Spatial data: Vicmap  
 Maps: MRSC GIS

## Riddells Creek Pony Club Riddells Creek / Clarkefield

Community Equestrian Facilities Plan  
 Macedon Ranges Shire Council  
 Dja Dja Wurrung Country, Victoria

### LEGEND

- |                  |              |
|------------------|--------------|
| Property Parcels | Watercourses |
| 1m Contour       | High         |
| Roads            | Medium       |
| Local            | Low          |



Action	Lead	Timing / Priority
<b>Bullengarook Recreation Reserve</b>		
Review maintenance arrangements between clubs and Council. Clarify roles through an occupancy agreement and clear conditions of use.	Council/Club	Medium
Assist in the design and implementation of online booking and payment system that allows casual access to arenas	Council/Club	Medium
Improve parking and road entry to allow all weather access for large vehicles.	Council	Medium
Upgrade perimeter fencing where required.	Council	Medium
Provide seating for spectators	Club	Medium
Upgrade horse yards.	Club	Medium
Remove or repair loading ramp.	Club	Low
<b>IR Robertson Reserve, Gisborne South</b>		
Improve water supply via recycled water for cross-country jumps, dust suppression and toilets. (If possible / feasible).	Council/Club	Medium - High
Evaluate the dog off lease/on leash requirements at Macedon Ranges Shire equestrian reserves during the development of the Domestic Animal Management plan (2025-2029)	Council	High
Clubs to provide additional signage on allocated usage days/times to advise dog walkers of equestrian activities in progress and ensure dogs are on leash	Clubs	High
Improve parking and road entry to allow all weather access for large vehicles.	Council	Medium
Construct additional yards to reduce parking requirements. (Completed 2025)	Club	Medium
Consider upgrade to second entry/exit for emergency access off McGeorge Road.	Council	Medium
Review maintenance arrangements between clubs and Council. Clarify roles through an occupancy agreement and clear conditions of use.	Council	Medium
Ensure building assets meet current requirements for access, fire and electrical safety.	Council	Medium

Action	Lead	Timing / Priority
Monitor the safety of the pine trees as they senesce – as the area is used for yards and parking.	Council	Medium
Update access and gating arrangement to allow casual key holder to use as appropriate. (Booking of Cross-country course available via TRY Booking).	Club	Medium
Additional tree planting for windbreaks and shade.	Council/Club	Medium
Address the manure collection and management.	Club	Medium
Consider undertaking a drainage plan for the Reserve	Council/Club	Medium
<b>Barringo Recreation Reserve, Macedon /New Gisborne</b>		
Undertake a cross-country course safety audit, consider appropriateness of ongoing provision of cross-country at this site.	Council/Club	High
Club and Councils Environment team continue to work together to manage use of environmentally and culturally sensitive land or consider options for relocating club activities in other areas.	Council/Club	Medium
Council to provide educational training opportunities for users to foster collaborative efforts in preserving significant areas.	Council	High
Evaluate the dog off lease/on leash requirements at Macedon Ranges Shire equestrian reserves during the development of the Domestic Animal Management plan (2025-2029)	Council	High
Clubs to provide additional signage on allocated usage days/times to advise dog walkers of equestrian activities in progress and ensure dogs are on leash	Clubs	High
<b>Rollinson Reserve, Kyneton</b>		
Increase water access for drinking, dust suppression and wash down areas.	Council/Club	Medium - High
Construct washdown bays.	Council/Club	High
Upgrade external fencing where required, particularly along Edgecombe Road.	Council/Club	High
Review maintenance arrangements between clubs and Council. Clarify roles through an occupancy agreement and clear conditions of use.	Council	High

Action	Lead	Timing / Priority
Improve parking and road entry to allow all weather access for large vehicles.	Council	High
Evaluate the dog off leash/on leash requirements at Macedon Ranges Shire equestrian reserves during the development of the Domestic Animal Management plan (2025-2029)	Council	High
Clubs to provide additional signage on allocated usage days/times to advise dog walkers of equestrian activities in progress and ensure dogs are on leash	Clubs	High
Upgrade and maintain the cross-country course to a competition level, in the longer term if use and access arrangements can be addressed.	Club	Medium
Planting a screen and windbreak between car clubs and equestrian areas to minimize conflict and sightlines.	Club	Medium
Assist in the design and implementation of online booking and payment system that allows casual access to arenas.	Council/Club	Medium
Ensure building assets meet current requirements for access, fire and electrical safety.	Council	Medium
<b>Woodend Racecourse Reserve, Woodend</b>		
Retain the two eastern sand arenas, turn over the sand, remove weeds and install spectator seating.	Council/Club	High
Closure of the cross-country course and retain area for open space. Equestrian to be limited to arena activities only.	Council/Club	High
Evaluate the dog off lease/on leash requirements at Macedon Ranges Shire equestrian reserves during the development of the Domestic Animal Management plan (2025-2029)	Council	High
Clubs to provide additional signage on allocated usage days/times to advise dog walkers of equestrian activities in progress and ensure dogs are on leash	Clubs	High
Western sand arena to be removed for proposed rectangular pitch (soccer/rugby) and buffer (landscaping / plating / fencing) created between rectangular pitch and retained sand arenas. (In line with Woodend Racecourse Reserve Masterplan	Council	High/Medium
Implementation of online booking and payment system that allows casual access to arenas.	Council/Club	Medium
Former stables/existing storage shed - Replace storage in a more accessible location. Retain horse yards subject to demand.	Council / Club	High
New access point on Forrest St to further assist equestrian users with float access.	Council	Medium

Action	Lead	Timing / Priority
<b>Lancefield Park Recreation Reserve, Lancefield</b>		
Planting a screen and windbreak between harness and equestrian areas to minimize horse distraction during dressage.	Council/Club	High
Evaluate the dog off lease/on leash requirements at Macedon Ranges Shire equestrian reserves during the development of the Domestic Animal Management plan (2025-2029)	Council	High
Clubs to provide additional signage on allocated usage days/times to advise dog walkers of equestrian activities in progress and ensure dogs are on leash	Clubs	High
Protect megafauna area in line with recommendations contained in the Lancefield Park Recreation Reserve Master Plan.	Committee of Management/Club/ Council	High
Upgrade of surface arenas.	Committee of Management/Club	Medium
Improve parking to allow all weather access for large vehicles and access to trotting track on event days through a formal agreement.	Council	Medium
Assist in the design and implementation of online booking and payment system that allows casual access to arenas.	Council	Medium
Construct additional wash down bay x 2.	Club	Low
Increase water access for drinking, dust suppression and wash down areas.	Committee of Management/Club	Medium - High
Support recommendations for equestrian site contained in endorsed Lancefield Park Recreation Reserve Master Plan	Committee of Management/Club/ Council	Ongoing
<b>Riddells Creek Pony Club (Candlebark), Riddells Creek/ Clarkefield</b>		
Update yards to improve security and safety.	Club	High

Action	Lead	Timing / Priority
Investigate options with the club and other landowner to secure long-term tenure of venue, then enable further public investment on the site.	Club	High
Improve the access track around the yards and parking areas	Council	Medium
Provide appropriate wash down area for competition days.	Club	Medium
Complete a detailed tree planting plan to provide shade and wind protection.	Council/Club	Medium
<b>Partnering with our Equestrian Community</b>		
Support partnerships between the schools, clubs, health promotion groups and other stakeholders to support opportunities for more people to ride.	All stakeholders	Ongoing
Establish standard occupancy agreements for equestrian facilities to ensure that roles, responsibilities, financial obligations and venue requirements are clearly articulated and monitored.	Council / Clubs	Medium - High
Clubs and peak bodies to collaborate to alleviate risks that prevent casual use, including condition of facilities.	Club / Peak bodies	Medium - High
Clubs and peak bodies to establish an online booking system for casual use for appropriate facilities.	Council / Club / Peak bodies	Medium - High
Provide information about equestrian clubs, facilities to hire, and trails in the Shire, for Council web page.	All stakeholders	Ongoing
Work with Riding for the Disabled Association to investigate South Gisborne and/or Bullengarook as an RDA facility and with RDA and other potential partners to establish and promote this opportunity.	Council / Club / Peak bodies	Medium - High
Advocate with Parks Victoria and Department Energy, Environment and Climate Action (DEECA) regarding trail riding opportunities (i.e. increased access and trails, preparation updated of information about trails in the Shire, code of conduct for cyclists and trail bike riders that assists with awareness about meeting horses on trails)	Council	Medium - High
Work with existing clubs to improve club sustainability with regards to governance, volunteer support and funding opportunities etc (i.e. Council programs, training sessions and funding opportunities)	All stakeholders	Ongoing
Update signage at each equestrian site with a facility name and contact details for information	Council / Clubs	Medium - High
Consider introducing the two-level hierarchy of facilities: local and Shire-wide. Investigate options to enable camping on, or in the vicinity of, the Shire-wide facilities.	Council	Medium - Low

<b>Action</b>	<b>Lead</b>	<b>Timing / Priority</b>
Support clubs to provide female equestrian participation opportunities to the community to support Council's Fair Access Policy (i.e 'This Girl Can' initiatives).	Council / Peak bodies / Clubs	Ongoing
Work with the clubs to complete a thorough safety and compliance audit of all cross-country courses. Agree on the level of cross-country competition, if any, for each venue and design accordingly, or remove jumps.	Peak bodies / Clubs / Council	Medium
Ensure Emergency Management Plans are provided for each venue.	Council / Committees of Management / Clubs	High

## 5. APPENDICES

### Appendix 1. Macedon Ranges equestrian clubs and membership

The following tables summarise the 2023 registered club members as recorded at the start of the project. Council recognises that membership numbers may fluctuate over time and during the development of this plan.

**Table 5a. Macedon Ranges Equestrian Clubs using private land or land outside Macedon Ranges SC, approximate memberships\* and the primary facility used.**

Club Name	Membership	Primary Facility Used
Kyneton District Trail Riders Club	44	Glenlyon Reserve, Hepburn
Riddells Creek Trail Horse Riding Club	110	No fixed venue
Bolinda Riding Club	50	Private (Harney Park Equestrian Centre)
Working Equitation Lancefield Districts	Not known	Cemetery Road, Lancefield
Macedon Ranges Dressage Club	65	Juravon Park Equestrian Centre
Black Hill Riding Club	Not known	South Gisborne
Aurum Equestrian Club	Not known	Aurum Equestrian Centre
Five Mile Equestrian Club	Not known	Romsey

**Table 5b. Macedon Ranges Equestrian Clubs on Council or Crown land, approximate memberships\* and the primary facility they use.**

Club Name	Membership	Primary Facility Used
Gisborne Pony Club	46	IR Robertson Reserve
Gisborne and District Adult Riding Club	108	IR Robertson Reserve
Melbourne Show Jumping Club	150-200	IR Robertson Reserve
Bullengarook Pony Club	25	Bullengarook Recreation Reserve
Bullengarook Adult Riding Club	45	Bullengarook Recreation Reserve
Kyneton and District Adult Riding Club	50	Rollinson Reserve
Kyneton Pony Club	13	Rollinson Reserve
Lancefield Equestrian Group	100 30	Lancefield Recreation Reserve
<input type="checkbox"/> Equestrian <input type="checkbox"/> Pony Club		
Macedon Pony Club	43	Barringo Reserve
Woodend Pony Club	9	Woodend Racecourse Reserve
Riddell's Creek Adult Riders	20	Woodend Racecourse Reserve
Riddells Creek Pony Club	43	Candlebark Riddells Creek Pony Club

\*Approximate membership numbers as supplied by club sources - 2023

## Appendix 2. Demand for equestrian activities in Macedon Shire

Australia and New Zealand are major global centres of equestrian sports and culture, with significant popularity of the sport due to the weather, geographical, natural, and historical factors of the region. The country with the highest proportion of horse riders among the nations is Australia with almost 400,000 Australians owning horses, which means that horse owners comprise nearly 2% of the Australian population).<sup>4</sup>

### Demographic influences

A survey of almost 4,000 horse owners found most were female and aged between 31 and 60 years; most lived in rural areas of Queensland, New South Wales or Victoria; had at least a secondary education, but no formal horse industry qualification; had a higher weekly income if based in a capital city; earned less than 10% of weekly income from horse-related activities; were a member of more than one horse industry organisation; reported an affiliation with one of more than 300 different horse industry organisations; spent 10–30% of their daily time with horses; and preferred to receive information by email.<sup>5</sup>

### Macedon Ranges demographic profile

The 2026 population forecast for the Macedon Ranges Shire is 56,749, up from 51,580 in 2021.

The Macedon Ranges Shire population is forecast to grow to 64,565 by 2036. Age, income, gender, ethnicity, disability and education are primary determinants of participation in sport and physical activity. Based on these indicators and the likely availability of land in the Shire there is high propensity for residents of Macedon Ranges to participate in equestrian activities.

Compared to regional Victoria, Macedon Ranges has:

- The population has a higher proportion of children under 14 and people over 60, and fewer adults aged 20-50 compared to regional Victoria. This suggests that equestrian activities like Pony Club and adult riding should both be popular.
- A very low proportion (4.5%) of people spoke a language other than English at home in 2021. The 'highest' income quartile was the largest group in 2021, comprising 32% of households with income. The proportion of non-English born people who participate in equestrian is very low, therefore this is unlikely to impact participation in the Shire.
- Only 27% of people with a Bachelor or higher degree/ qualification, lower than Victoria. Equestrian sports typically attract well educated people with relatively high incomes, even though recreational equestrian activities are participated in by people from a wide range of income brackets. In this instance living close to where facilities are means participation will be more affordable.

---

<sup>4</sup> The Popularity of Equestrian Sports in Australia and New Zealand. Everything about horses

<sup>5</sup> Demographics of Australian horse owners: results from an internet-based survey GB Smyth, K Dagley 25 November 2015

**Table 6. The following table identifies each equestrian facility in the Shire, the district that it's located in according to .id demographics, the estimated population from the 2021 census (latest census at time of project inception) as well as the growth in population in that district since the last census and forecast growth. Estimated population 2021 in the district around each equestrian facility in Macedon Ranges, known membership and projected future population growth**

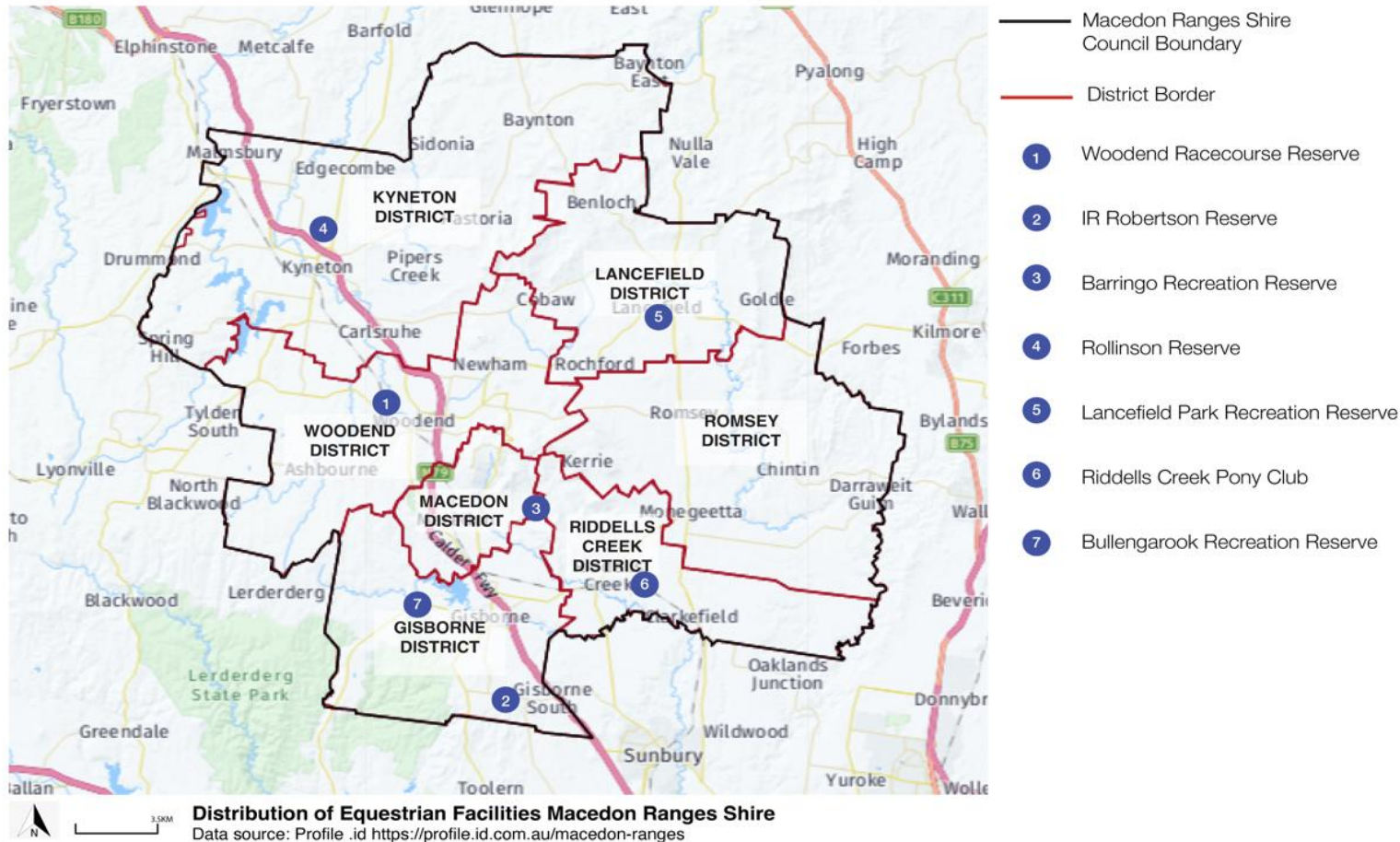
District	Name of Equestrian Facility	Population of surrounding district 2021 <sup>6</sup>	Known club membership	Population growth since last census	Est. Population 2036 <sup>7</sup>	Growth projected to 2036	% growth projected 2021- 2036
Gisborne District	IR Robertson Reserve	14,335	354	0.79%	20,170	5,835	40.7
	Bullengarook Recreation Reserve		70				
Kyneton District	Rollinson Reserve	9,805	63	1.38%	11,707	1,902	19.4
Lancefield District	Lancefield Park Recreation Reserve	3,336	130	2.64%	4,465	1,129	33.8
Macedon District	Barringo Recreation Reserve	3,554	43	0.25%	3,481	-73	-2
Riddells Creek District	Riddells Creek (Candlebark) Pony Club	4,792	43	1.09%	7,389	2,597	54.2
Romsey District	No facility	7,009	NA	2.30%	9,203	2,194	31.3
Woodend District	Woodend Racecourse Reserve	8,745	29+	2.58%	9,357	612	7

<sup>6</sup> [forecast.id.com.au/macedon-ranges](https://forecast.id.com.au/macedon-ranges). Population summary

<sup>7</sup> [forecast.id.com.au/macedon-ranges](https://forecast.id.com.au/macedon-ranges). Population forecast

### Relationship of facilities to demographics

Equestrian facilities are relatively equitably distributed across the Shire. There are community equestrian facilities in every district of the shire apart from Romsey. The Gisborne district, which has the largest population in the Shire has two.



## Likely participation and profile of equestrian participants

The participation data for Macedon Ranges Shire shows it has one of the highest participation rates in equestrian recreation activities in LGAs in Victoria. A high proportion of that participation is by older females. A market which would benefit greatly from further participation. In addition, those from the inner suburbs of Melbourne can agist a horse in the Macedon Ranges and add to local participation.

Other studies have pointed to the high value of the equine industry to Macedon Ranges and it follows that people associated with the wider industry ride for recreation and sports.

The engagement process showed that other than the traditional Pony Club, Horse Riding Clubs Association Victoria (HRCAV) and Equestrian Australia (EA) disciplines and trail riding, other equestrian sports such as Working Equitation are present and very active in Macedon Ranges.

The survey also showed that Riding for the Disabled Association (RDA) is not present in Macedon Ranges and there is a demand for opportunities for people of all ages and abilities to participate in equestrian activities, including those related to the particular breeds of horse, and recreational events for example the National Clydesdale and Heavy Horse Festival.

## Equestrian sport context

Endurance riding, dressage, jumping, and horse-riding are popular equestrian sports. There is an estimate of two hundred fifty thousand people in Australia that are involved in the equestrian industry. Moreover, there are around 85,000 people employed in the industry, which equates to about \$1.7 billion in income.

There are around 350 equestrian sporting events in Australia every year. The Olympics in Los Angeles in 1984 was a major event not only for equestrian sports in Australia but also around the world. The success of Australia in equestrian events changed the national attitude about the sport. And as such, it was viewed by many to be a landmark moment in the development of equestrian sports in Australia and internationally.

In the last ten years, the Australian sport and recreation industry has grown by approximately \$1.3 billion per annum. Equestrian competition is a significant part of this, accounting for over \$70 million, or 5.8% of this figure.<sup>8</sup>

---

<sup>8</sup> The Popularity of Equestrian Sports in Australia and New Zealand. Everything Horse Magazine. June 2022

## Participation rates in equestrian sports and recreation activities

In Macedon Ranges, participation in equestrian activities ranks in the top 10 sport and physical exercise activities participated in, whereas it does not rank in the top 15 for Victoria or Australia overall.

Only four Victorian LGAs have equestrian activities in the top ten sport and physical activities, for females:

- Golden Plains (9.5%)
- South Gippsland (8.5%)
- Macedon Ranges (6.3%) and
- East Gippsland (5.6%).

None of these have equestrian sport and physical activities in the top ten when male and female participants are combined.

Applying the participation rate of 2.5% for the regional Victorian population in equestrian facilities to the population of Macedon Ranges, it is projected that Macedon Ranges may have 1,300 participants in recreation equestrian activities currently, and that this figure may increase to 1,600 by 2036.



Image – Barrigo Recreation Reserve

Figure 1 - AusPlay participation rates: Macedon Ranges, female

# AUSPLAY™

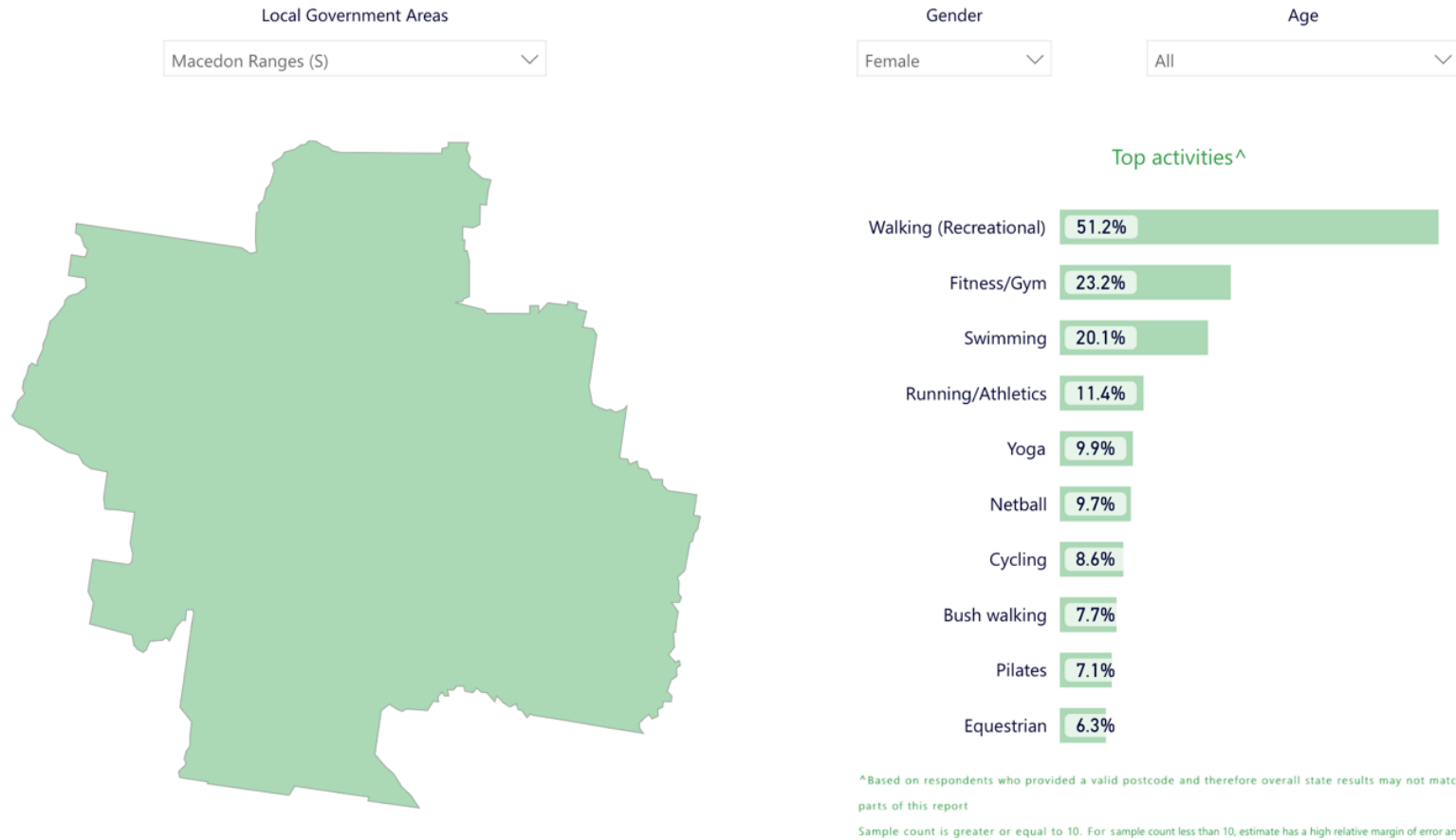
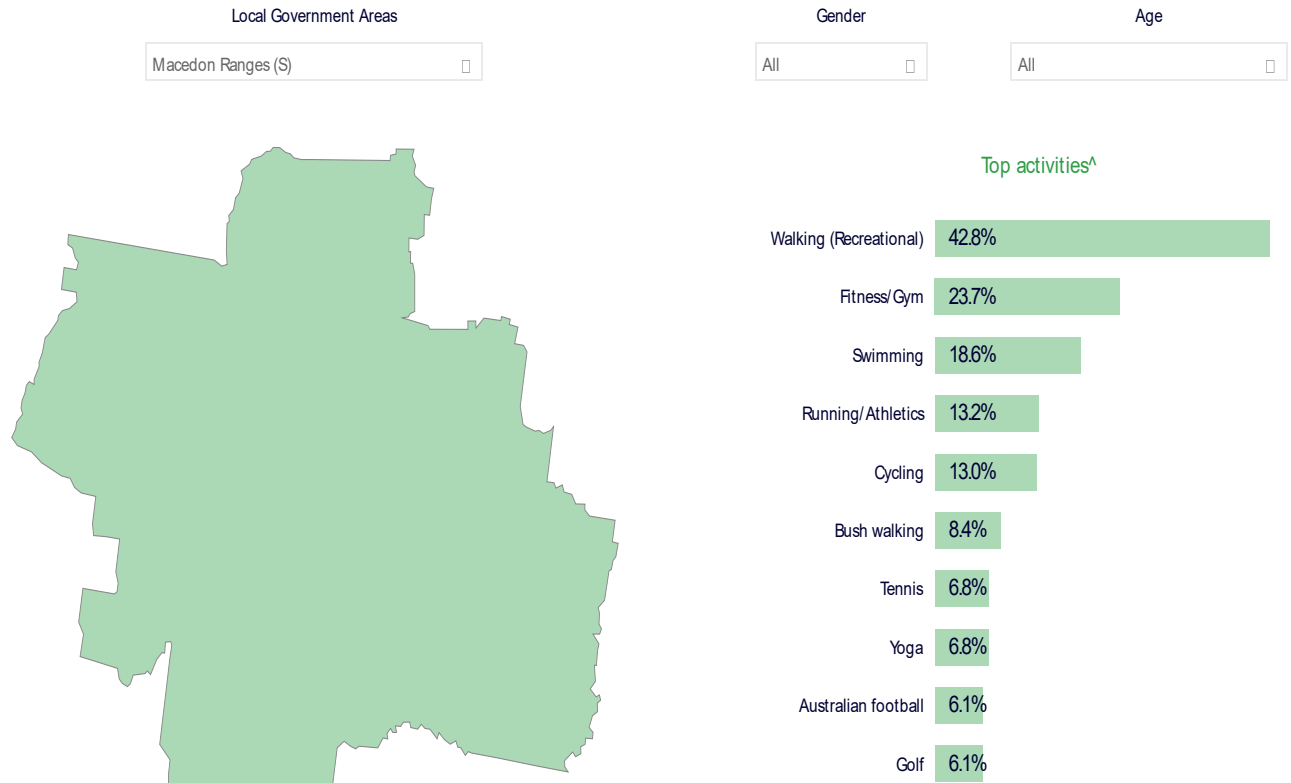


Figure 2 AusPlay participation rates: Macedon Ranges, all genders

# AUSPLAY™



<sup>^</sup> Based on respondents who provided a valid postcode and therefore overall state results may not match other parts of this report

Sample count is greater or equal to 10. For sample count less than 10, estimate has a high relative margin of error and is

## Profile of participation in equestrian activities in Australia

### Gender and age

Participation data from AusPlay indicates that equestrian sport is predominantly female, with only 15% of participation being adult males, and in children, 23% of organised (out of school) participants being males.

The highest proportion of participants in any age group by gender are females in the 45 to 54 age bracket (18%), and females in the 25 to 34 year age group (18%), followed by females 15 to 24 years, (17%), females 35 to 44 years (16%) and then females 55 to 64 years (12%).

A surprising number of people over 60 years of age still participate the majority of whom are female.

Nationally the total participation rate is 1%.

Organised participation for females averages at about 2.7% and for males it peaks slightly earlier at 9 to 11 years, at 0.7%.

Some 45% of adult (over 15 years) equestrian participation, is organised (run by a centre, program or organisation outside school).

Some 25% of people over 15 years of age participate through a club.

### Cultural background and ability

The participation rates in equestrian activities for people speaking languages other than English is very low; 0.42% compared to 1% for Australia as a whole.

People with disability have a participation rate in equestrian facility activities at 0.76% (higher than for people speaking languages other than English).

The participation rate of indigenous peoples is the same as for the total participation rate in Australia.

### How equestrian participation compares with other sports and physical activities

In Victoria, the top sports, based on participation rates, in order of percentage are: swimming, Australian football, basketball, gymnastics, dance, soccer-football, tennis, netball, cricket and karate.

The top 10 activities participated in Macedon Ranges for all genders are walking, fitness, swimming, running, cycling, bushwalking, tennis, yoga Australian rules football and golf.

The top activities participated in by females include in descending order: walking, fitness/ gym, swimming, running, yoga, netball, cycling, bushwalking, Pilates and equestrian activities.

Equestrian does not rank in the top ten activities for males and females combined.

### Patterns of participation in equestrian activities

Of those people who participate in equestrian activities (Australia wide) 65% of participants participate once a week. The most common participation frequency (83%) is once a month.

Females who participate more regularly and for the longest duration tend to be 18 to 24 year olds.

The majority of riders (29%) ride for an hour to an hour and a half, each time they participate, however 21% participate ride between two and three hours and 21% three hours or more.

AusPlay only categorises equestrian activities as show jumping, horse riding, other equestrian activities, dressage and carriage driving. The largest

proportion is horse riding (79%) other equestrian activities (13%) dressage, (3.5%) show jumping (2.9%) and carriage driving (1.1%).

Common activities that equestrian participants also participate in include walking, running, swimming and fitness.

The main motivations to participate in equestrian are fun and enjoyment, as a hobby, physical health and fitness and social reasons.

The main reasons for dropping out include can't afford it, or can't afford the transport, not enough time, or too many other commitments, poor health or injury and increasing age or too old.

AusPlay shows that since 2016 there has been a rise in the overall number of organised and club participants in equestrian activities in total in Australia from 194,000 to 254,000. This is likely to reflect an increasing population however there has been a slight increase of 0.2% in the participation rate.

Participation in equestrian activities is higher in remote areas - 2.4%, in regional areas - 2.2% in major cities -0.6%.

### **Key implications of demand in relation to Council's role**

Equestrian activities and clubs are important to support in conjunction with a range of other competition sports and outdoor recreation activities.

Equestrian clubs provide support and encouragement to people to own, ride and enjoy horses.

A key state government policy is to encourage more females to participate in sport and recreation. Supporting those activities already popular with females such as equestrian activities aligns with this policy.

Residents in Macedon Ranges are dependent on the equestrian facilities for:

- Providing the suite of community equestrian activities.
- For the growth and development of basic equine skills and opportunities.

- Enabling clubs to provide a supportive and enjoyable environment so people of all ages can share their interests and continue to benefit from riding a horse.
- Participation in pony and riding clubs and any Equestrian Victoria clubs should be supported by Council as recreational and the grass roots level of equestrian sport, as these provide pathways to lifelong activities and higher levels of sport in the same way as other community sports facilities, and facilities are available and suitable to accommodate these activities.
- Pony Clubs provide the opportunities for young people to learn and develop equine skills and enter a pathway to equestrian sports if desired, whereas riding clubs provide support and encouragement for people from a wide range of age and ability groups, who own a horse, and enjoy the activity and may not have any ambition to be an Olympian for example.
- Council can influence the participation in these activities by ensuring facilities: are fit for purpose, target a wide range of ages and abilities, and clubs are encouraged to include programs focused on the development of foundation skills.
- When assessing the range of activities evident on the equestrian reserves, it is important to emphasise that organised equestrian participation is dependent on these facilities. Other recreational activities such as walking and dog walking do not rely on dedicated facilities and grounds.
- Another consideration for Council is that horse riding is the second most expensive organised sport or physical activity behind motor sport, with the average annual expenditure per person of approximately \$1,400. (ABS 2016). This is likely to be partly because of the high cost of participation through the cost of private services and facilities, as well as cost of looking after and transporting a horse.

- Retaining local community-level facilities close to residences and schools is likely to increase the chances of local residents participating in equestrian activities, as compared to moving these facilities further out of the Shire or consolidating facilities. However, this needs to be managed sustainably and may necessitate limiting activities at sites or the closure of venues.
- One key issue raised in the community survey and by clubs was the need to have access to trails for general pleasure riding, rather than just competitions and club activities, as without trails all other activities come with a cost and rely on floating horses. Trails in MRSC are provided on Parks Victoria and DEECA land.

### Benefits of equestrian facilities

Equestrian activities provide a high degree of personal health and well-being, as well as community benefits. They encourage people (especially females) to be outdoors, be physically active and connect with animals and other people.

Riding a horse requires the use of a wide range of muscle groups and builds strength, stamina as well as coordination and promotes the development of resilience and strategic decision making.

The bond that develops between the horse and the rider has been shown to provide considerable psychological and stress release benefits and horse riding is commonly used as a therapeutic tool to promote these benefits.

*Noella says her horses can even just look at her sideways in a way that makes her feel better. "They can complete a whole human," she said. For Noella and many people with disabilities who ride, horses provide a kind of*

*therapy that cannot be understated. "My horse is my reason to get up, he makes me feel normal."<sup>9</sup>*

Like many other sport and recreation activities, the development of horse-riding skills and competition can enhance self-confidence, social skills, the sense of belonging and responsibility that comes with owning and caring for a pet. These benefits including discipline, compassion and empathy are amplified for equestrian activities due the size of a horse and opportunities to compete with a horse, in events.

Australia is very fortunate that it is quite practical to own a horse, due to our climate (which means they don't need to be stabled over winter) and we have the space. However, the ability to keep and ride a horse in peri urban and metropolitan areas is becoming more difficult and being able to retain equestrian reserves close to where people live is a great strength of living in localities such as the Macedon Ranges Shire. The regional location where horses can be agisted and where a strong equine industry is present are considerable benefits.

The peak bodies say that the Macedon Ranges is the second strongest region in Victoria for equestrian sports participation, after the Mornington Peninsula. There is a significant industry present that supports recreational as well as thoroughbred breeding and training and other commercial equestrian activities.

---

<sup>9</sup> <https://www.abc.net.au/news/2023-09-20/para-equestrian-challenge-disability-assumptions/102849910#>

## Engagement with equestrian peak bodies

The main peak bodies relevant to the equestrian facilities in Macedon Ranges are:

- Equestrian Victoria
- Pony Club Victoria
- Horse Riding Clubs Association of Victoria (HRCAV)
- Riding Develops Abilities (RDA), and
- Australian Trail Horse Riders Association
- Additional various breed and equestrian activity associations.

@leisure interviewed staff members from Equestrian Victoria, Pony Clubs Victoria, Horse Riding Clubs of Victoria, and RDA Riding Develops Abilities.

Key points from these interviews follow.

### Pony Clubs Victoria

- Decline in memberships from 2015/16, mainly due the pressures of land development
- People likely to be still riding (horse sales have not increased in that time frame) but not as club members
- Drop out of club is common from 14 years of age
- Lack of volunteers is a common club issue
- Poor facilities are also an issue
- Dogs off lead is a common problem for clubs
- Ready to Ride program has been successful.

### Horse Riding Clubs Association of Victoria

Horse Riding Clubs Association of Victoria (HRCAV) has a club membership of around 200 clubs and over 5,000 members, including members in southern New South Wales.

The HRCAV hold annual Top Teams Trophy (TTT) Events (equivalent to State Championships) in each discipline of Showing, Dressage, Show Jumping, Horse Trials, Combined Training and Navigation Rides. Clubs compete in teams of four. TTT events are prestigious within the HRCAV with the Horse Trials being one of the largest.

Oaklands, Sunbury and Tullamarine Clubs have recently merged and now meet at the Greenvale Equestrian Reserve, next to Woodlands Park in Greenvale, and have taken the name Woodlands Pony Club. They are now the biggest club in this Zone.

- Volunteers are an issue for all clubs particularly since COVID
- Lack of places to ride for pleasure is a key issue i.e. off-road trails close to home
- A new discipline for riding clubs is 3 phase equitation which has its origins relating to working horses
- Club size varies from 20 people to up to 100 members
- Role for Councils is taking on the larger maintenance issues including mowing of access roads, providing support facilities like toilets and showers; providing a network of trails where horses can ride along with other user groups
- Dog areas should be fenced if horse riders are nearby
- Casual use of facilities can be managed via a key system that provides a source of income to clubs
- Only to be used when others are present.

### Riding for the Disabled Association Australia (RDAA)

There are some 36 clubs in Victoria.

- RDAA do not have a presence in Macedon Ranges and there is significant demand
- It is common to co-locate with other equestrian clubs
- RDAA would facilitate agreement for a particular centre and recruit volunteers seek funds etc.,
- RDAA have strong partnerships with major racecourses and ability to use ex racehorses
- Would strongly support and assist in the development of a venue and programs in Macedon Ranges

### Australian Trail Horse Riders Association

The Riddell Trail Riders Club is one of the largest in Victoria with over 80 adult riders and 17 riders under 18 years. It once was the largest in Australia with over 200 members. It is now the second largest club in the state. Kyneton has 44 members. The largest club in the state is Ballarat with 92 members.

- Club membership is predominately women and girls
- Use public and private land

- Trails are mostly not maintained
- Role for Council is to:
  - help educate car drivers to give them an understanding of horses and riders
  - provide a link between public landowners and riding groups to access trails
  - some basic signage in parking areas if trails are shared with mountain bike riders and trail bike riders
- Misconception that horses are bad for the environment with regards to weed distribution and erosion.

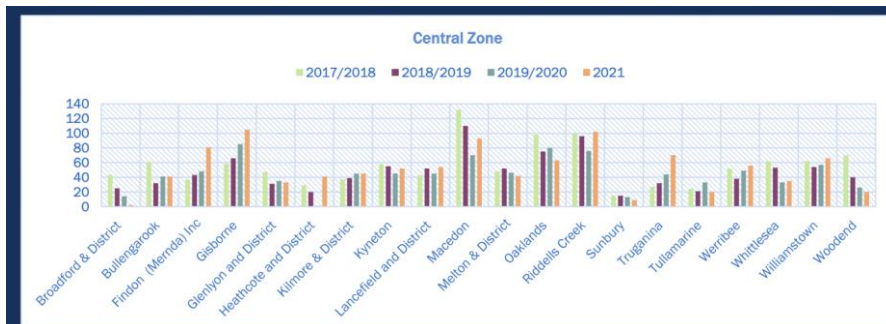
### Membership of clubs Pony Clubs Victoria

Macedon Ranges fall into the Central Zone for Pony Clubs Victoria.

The graph below shows stable membership at Bullengarook, Kyneton, Lancefield, and Riddells Creek, a trend for growth in Gisborne, and the highest but declining numbers in Macedon. Woodend shows declining membership to 2021.

It appears that Macedon Ranges has more clubs than any other LGA in the Central Zone

The graph below from 2021 shows membership comparisons over the years for each Pony Club in the Central Zone, which covers Macedon Ranges Shire.



## Schools

Braemar College, Woodend, who use Riddells Creek Pony Club (Candlebark), has finished in the top five schools in the Interschool State Equestrian Championships for the past 10 years.

The school won the State Championship in 2015 and 2016 and won the Victorian Equestrian Interschools Dressage Series Championships every year from 2011 to 2016.

Schools are an important part of the pathway from foundation skills into competition and active lifestyles in the long term. Connections with schools and clubs will be important in growing participation, and in economic development due to connections with the equine industry.

Braemar College for example has a number of extracurricular programs involving equestrian activities and it wishes to develop a registered training organization to further equine studies at the College, in a similar way to Hillcrest College in Clyde.

## Demand and preferences of the community and stakeholders

As part of this project a community survey was conducted, and residents and clubs were invited to make comments or send submissions.

The notes from these engagement processes are provided in the consultation finding document which is a separate volume to this plan.

A total of 313 people responded to the community survey. Detailed responses are provided in the consultation findings document and key themes arising are shown below.

## Key themes arising from responses

Some of the main consistent themes from the responses received in the community were:

- The need for facilities to be upgraded (mostly) and maintained.
- The importance of trails and opportunities for trail riders to ride through the municipality.
- The need for an indoor or covered arena.
- The high demand for casual use of these public facilities/ frustration that gates are locked.
- The significant benefits of horse riding and having public facilities for equestrian use.
- Conflicts with dogs
- The need for better parking /access to facilities.

## Peak Bodies-objectives and responsibilities

### Equestrian Victoria

Equestrian Victoria (EV) is responsible for a number of sports competitions and pathways:

#### Olympic Disciplines

- Dressage
- Eventing
- Jumping and
- Para-Equestrian (EA)

#### National Disciplines

- Show horse
- Interschool

#### FEI Disciplines

- Driving
- Endurance (EA)
- Vaulting (EA)
- Reigning (EA)

#### Squads

- Dressage Victoria squads
- Eventing Victoria Squads and
- Jumping Victoria Squads

#### Sports Programs

- High Performance Pathways
- Equestrian Victoria Young Ambassador Program

- Young Rider Dressage Squads and Development Program"

The primary objectives of Equestrian Victoria are to:

- Encourage, develop, promote, and control horse sports throughout the State of Victoria
- Establish and maintain, throughout Victoria, a uniform code of rules and regulations to govern horse sports under its jurisdiction.
- Provide services and support to members, clubs, coaches, judges, and administrators, which is second to none.

Membership of Equestrian Victoria now exceeds 200 affiliated clubs, and 5,000 registered athletes. The Association provides a broad range of services and benefits to its membership and has a major focus on servicing member clubs, to ensure they are well equipped to professionally deliver quality horse sport programs to the community.

Equestrian Victoria relied on two private facilities Boneo (now sold) and Yering Equestrian Centre for competitions, in addition to the Werribee Equestrian Centre.

Some Equestrian Victoria events are held at Robertson Reserve, Gisborne and at Candlebark Riddells Creek Pony Club.

Activities provided at the community level are an important conduit for riders that may wish to learn the sports and ultimately compete in Equestrian Victoria Sports disciplines, at other locations.

Equestrian Victoria provides a number of facility guidelines related to facilities in line with national and international equestrian sports.

## **Pony Club Victoria (PCV)**

Pony Club Victoria provide for younger riders, typically up to 16 years of age, learning basic skills. Some Clubs in the Macedon Ranges have riders older than 16.

Their mission is: To provide education in rider safety and horse welfare while developing horsemanship skills through participation and competition. "Pony Club is the first choice for a fun, inclusive experience for young people and families in a safe, educational environment that teaches horsemanship skills and equestrian opportunities "

## **Horse Riding Clubs Association of Victoria (HRCV)**

Horse Riding Clubs Association of Victoria cater for adults who own a horse, are riding for the first time or most commonly, or are an entry point for those returning to the activity after having a family. Some adult riding clubs also cater for riders who don't have horses. Members need to be able to ride independently. HRCV provide a community of likeminded people to support and encourage people to own or ride a horse. These clubs are unique to Victoria. Most clubs have their own grounds - but they might hire other facilities.

Competition disciplines include

- Navigation Rides
- Showing
- Horse Trials
- Dressage
- Show Jumping
- Combined Training
- 3 Phase Equitation (new discipline)

## **Trail Riders Association**

"That objectives of the club are to enjoy, promote and publicise the recreational values of horse riding along nature trails, and in furtherance of this objective:

- To organize trail rides in this or other districts
- To encourage family participation in non-competitive horse riding
- To foster awareness of the usefulness and abilities of the horse
- To encourage horse riders in the protection and conservation of the native Australian flora and fauna
- To co-operate with others in the setting up and maintenance of trails
- To foster in horse riders and Australians generally an awareness of road and other safety rules with regard to horse riding and
- To affiliate with the Australian Trail Horse Riders Association (ATHRA).

## **RDA - Riding Develops Abilities**

RDA -Riding Develops Abilities specialise in providing support and coaching for people with a disability (particularly physical disabilities) who want to ride a horse or ride for therapy purposes. In most cases riders don't have their own horses and they are provided on site.

## **Breed Associations**

There are a wide range of equestrian breed associations, for example Arabian, Miniature Horse, Clydesdale, Show Horse etc., However there are no known such groups active.

## Appendix 3. Risk and maintenance responsibilities

Pony Club Australia have detailed Policies and Risk Management procedures available to member Pony Clubs on their website to support Club events and manage risk - <https://ponyclubaustralia.com.au/about-us/resources/>.

The Horse-Riding Clubs Association of Victoria also have Policies and Guidelines that are available to support Club events and manage risk - <https://hrcav.com.au/rules-guidelines/>

Following is a summary of Clubs, Council Advisory Committees and Council responsibilities for equestrian reserves. (Note: Reserves with equestrian activities have a range of management structures. Clubs either report direct to Council, an Advisory Committee (Robertson Reserve), a DEECA Committee of Management (Lancefield) or private owner (Portion of Riddells Creek).

**Table 8. Club, Advisory Committees and Council responsibilities for community equestrian reserves**

Item	Club/Advisory responsibilities	Council responsibilities
Communication	Inform Council of name/s of current Club contact, phone number/s and email address/s.	Council to communicate via Club contact supplied by Club.
Internal Roads and Carparks	Report issues to Council/Committee.	Maintenance as required, annual grade of internal roads negotiated with committee and Councils Operations Department.
Ground Level Drainage	Report issues to Council/Committee.	Site Drainage – Keep drains clear of obstructions and vegetation growth. Modifications and capital upgrade as determined.
Trees	Club to notify Council/Committee of all tree management issues and are prohibited from undertaking any works. Clubs may clean up fallen limbs and debris.	Tree management as required.
Mowing	Competition area – Club is responsible for mowing of all competition arenas outside of Councils 2 per year.	Council to mow twice per year. Fire prevention works may be required.
Damage to property by misuse	Report all damage caused through misuse by the Club to the Council/Committee. Club is responsible for cost of repairs.	Council to arrange repairs and invoice Club for cost of repairs.
Structural Integrity	Visual inspection to determine any obvious defects and report to Council/Committee.	Building inspection, repair or renewal.
Signage	User groups are required to discuss requirements with Council's Open Space and Recreation department before the erection of any new signage, including on fences and buildings.	Regulatory and Emergency Signage - Renewal as prioritised by Council. All signage must be approved by Council and adhere to Councils planning regulations.

Item	Club/Advisory responsibilities	Council responsibilities
	Sponsorship and Club signage – inspect, repair and replace to ensure they are clear, legible, structurally sound and compliant with all relevant planning and building requirements, permission from the committee is required. Care should be taken to ensure that appropriate signage is erected to warn of any hazards. Any non-compliant signage will be subject to planning legislation.	
Building alterations	Building alterations not to be undertaken without written support from the Council/Committee and written approval from Council. Council has a responsibility to ensure the reserve is safe for all users. Any user group proposing such works must formally apply to Council for consideration of works using the “Ground/Pavilion Alterations Maintenance Request” form. All works that are classified as a regulated trade- i.e. plumber, electrician, gasfitter, roofer- must be carried out by a suitably qualified tradesperson who will have all relevant qualifications, licences and insurances including Workcover.	Assess all requests received for building alterations, provide approval in writing, ensure compliance and satisfactory completion. And/or Council undertakes repairs with Council contractors under a cost agreement between Council and the Club.
Roof, Eaves Guttering and downpipes	Report visual defects to Council/Committee. Climbable fixed items must not allow access to the roof.	Inspect, clean, repair or renewal as prioritised by Council.
Painting	During user period, painting repairs if damaged through general use or in the event of damage caused by inappropriate behaviour.	Renewal as prioritised by Council. Internal & external painting as part of the building’s programmed maintenance schedule.
Plumbing and fixtures	Report issues to Council/Committee. Repairs to internal fittings and fixtures using licensed plumber from Council’s panel of providers.	Drainage repairs or works, including sewerage, drains, water pipes and pits. Replacement of gas pipes. Structural repairs or capital works.
Fixture and Chattel (Fixture - any physical property that is attached in such a manner that it becomes a part of the property; Chattel - property that is not affixed to real property and can be easily removed without damage to the property)	Report issues to Councils Facility Management Department. Ensure all equipment used during Club activity is in a safe and effective working order. Repairs using contractor from Council’s panel of providers.	Nil.

Item	Club/Advisory responsibilities	Council responsibilities
Building Lighting (Internal and External) Security Lighting	Report issues to Council/Committee. Replace globes, repairs to lighting using contractor from Council's panel of providers.	Renewal as prioritised by Council.
Electrical Fittings Light Switches Power points	Report issues to Council/Committee. All additional works must be approved by Council prior to works commencing. All works must be undertaken by contractor Council's panel of providers.	Approval for additional installation works.
Electrical Panel Switchboards Wiring	Report issues to Council/Committee.	Electrical switchboard inspections, maintenance and upgrades.
Hot Water System	Report issues to Council/Committee. Contribution towards renewal	Repair or renewal as prioritised by Council.
Air Conditioning/ Heating	Report issues to Council/Committee. Contribution towards renewal	Repair or renewal as prioritised by Council.
Floor surfaces and coverings	Carpets - Regular cleaning and maintenance, including 6 monthly steam cleaning; Timber Floors – Regular cleaning with recommended cleaning product.	Renewal as prioritised by Council, Contribution required from Committee / user groups; Timber Floors – Inspected and resealed as required.
Doors (Internal and External, including cupboard doors and door fittings) Windows and Glass, Skylights, Fly Screens, Curtains and Blinds Walls (Internal and External) and Ceiling (Internal)	Regular cleaning.	Renewal as prioritised by Council.
Exit Doors Signs Emergency lighting, Fire Services Emergency Power and Lighting	Notify Council/Committee immediately of any damage or defects.	Essential Safety Measures maintenance requirements conducted by Council to comply with emergency management obligations under the Building Code of Australia.
Testing and Tagging	Clubs must ensure any electrical items and cables used by user group have been appropriately tested and tagged.	Testing and Tagging of Council and committee owned electrical items and appliances.
Keys and Locks	No pavilion key(s) may be cut/duplicated. User groups are responsible for keeping a record of who holds keys.	Maintain a Secure Key System, coordinate key allocation, cost of initial two keys provided to user groups, invoice user groups and committees

Item	Club/Advisory responsibilities	Council responsibilities
	User groups are not permitted to change locks on Council-owned facilities and will be charged for repairs and new keys if they do so. Keys are provided to user groups as per Council's Key Policy. If additional keys are required, please complete and return the "Key Request Form" to arrange extra keys at a cost to the user group.	for cost of all other keys, upgrade facilities to Council Secure Key System when budget allows.
Security system	Support from Council/Committee and approval from Council required for installation of security system. Cost of installation, repairs and maintenance if required by Club. Security code to be provided to Council.	Installation of Security System must be directly wired to switchboard. Approval for installation of security system.
Vandalism	Immediately notify Committee of vandalism, glass breakage, any immediate risk to safety or emergency maintenance. Clear away loose material/objects, such as rubbish bins to avoid or minimise vandalism. Loose combustible materials must be stored at least 10 metres from any buildings. LPG gas bottles must be stored securely and away from combustibles and chemicals.	Council to determine if the reported vandalism is to be referred to the insurer. Council's Insurer to determine whether an insurance claim is lodged. Council to determine scope of works. If an insurance claim is not lodged, Council to determine who is responsible for cost of repairs or replacement.
Pest Control	Pest control such as ant and spider spraying. Submit Pest Controller Certification that works have been undertaken to Council.	Termites - Annual inspection and condition report to Council, treat as required. Repair of any damage caused by termites will be subject to available Council funds.
Services - Electricity, Gas, Water Communications - Telephone and Internet	All user groups shall pay for utility charges, including electricity, gas and water rates and consumption. Shared pavilions in most cases will have electricity accounts in the name of one of the allocated user groups. The onus is on the joint user groups to negotiate their respective percentage contribution towards any utility charges.	Nil.
Septic	During user period, pumping out of septic tanks must be undertaken by a certified provider.	Maintenance and renewal as prioritised and inspection.
First Aid	During user period, ensure appropriate First Aid facilities and equipment are available for Club activities.	Nil.
Evacuation Plan	During user period, ensure Evacuation Plan is clearly displayed and evacuation routes are always clear. Develop, print and display laminated Evacuation Plan at facility	Provide safe access from the main road (and, where possible, two road access points in case of events or emergencies). .

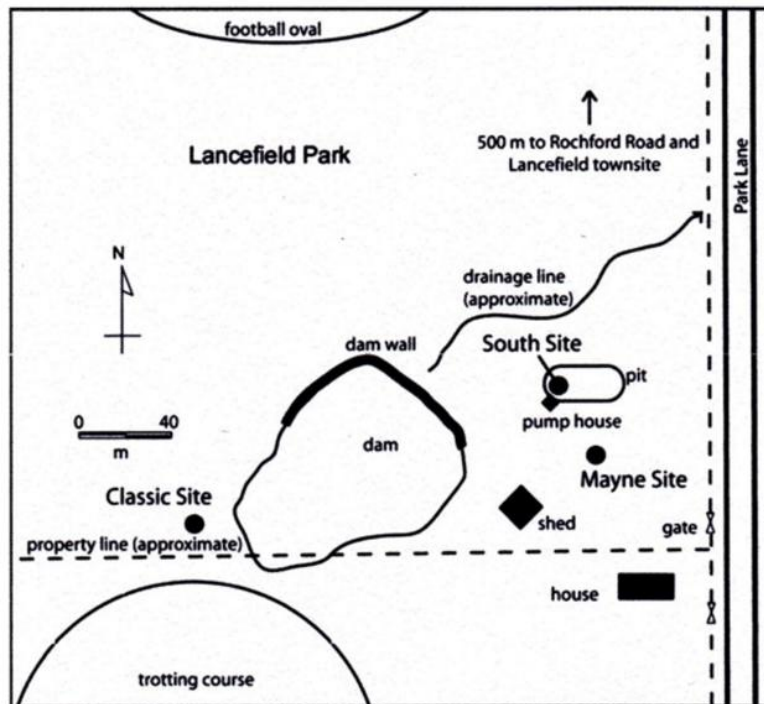
Item	Club/Advisory responsibilities	Council responsibilities
Fire restrictions and days rated 'Catastrophic'	All fire restrictions are to be adhered to and user groups are responsible for making themselves aware of these. For more information on Councils emergency management policies and procedures please see <a href="http://www.mrsc.vic.gov.au/Live-Work/Fire-Emergencies">http://www.mrsc.vic.gov.au/Live-Work/Fire-Emergencies</a>	Update website information when required.
Kitchen	During user period, regular cleaning, maintenance and repairs.	Renewal as prioritised by Council.
Food handling and storage areas	During user period, comply with Food Act 1984 and Food Standards Code.	Annual inspection (as a minimum) as per the Food Act 1984.
Appliances and Whitegoods	Repairs and renewal of Club appliances. Test and Tag club supplied appliances.	Test and Tag Council supplied appliances.
Storage	Shipping containers are prohibited on sporting reserves, other than those instances where containers may be required to temporarily store equipment when council/user groups undertake major works. Council approval is required	Nil.
Waste	During user period, disposal of Club generated waste at Clubs cost. Portable waste bins must be securely stored and these and fixed waste management stations must be located at least 10 metres away from structures.	Nil.
Bins	Clubs are responsible for their own skip bins, rubbish and recycle bins. All user groups shall ensure that rubbish throughout the entire reserve generated by participants and spectators has been placed in the provided rubbish bins, immediately after each event. User groups will be required to pay costs incurred by Council where further cleaning of rubbish generated by user groups is required. If extra bins are required, please contact the Open Space and Recreation department	Nil.
Cleaning	During hire period, ensure that appropriate standards of general cleanliness within the facility are maintained.	As required, ensure that appropriate standards of general cleanliness within the facility are maintained. If no user group on site, engage a commercial cleaner to conduct an annual clean.
Toilet	During user period, clean before and after each day of use.	Outside user period, regular cleaning, maintenance and repairs. Renewal as prioritised by Council.

Item	Club/Advisory responsibilities	Council responsibilities
Chemicals	Store chemicals in a safe and secure area with appropriate safety information to minimise the likelihood of misuse or pollution occurring and that MSDS are available	Nil.
Fencing	Internal fence repair and maintenance – arenas and yards.	Arrange shared cost for internal fences repair between user groups. Fencing or repairing the perimeter of the site with appropriate materials – for example remove barbed wire.
Ground/turf maintenance	All user groups are strictly responsible for ensuring that reasonable care is taken of the equestrian facilities and its surrounds including fences, buildings, toilets, trees, competition surface, playground equipment and sprinklers. Any damage caused must be reported to Council immediately	Nil.
Insurance	<p>The Club should be aware that they may be held responsible and liable for any damage or injury caused by their activities. The Club must take out and keep current during the period of hire, a public liability insurance policy, for a minimum sum of 20 million dollars (or a sum deemed appropriate by the sport's governing body, indemnifying the Council and the Club against all actions, costs claims, charges, expenses and damages whatsoever which may be brought or made or claimed against the Council or the Club or both arising out of or in relation to (the said contract).</p> <p>No booking is valid, and no ground usage may occur unless Council has been provided with a current Public Liability Insurance Certificate of Currency.</p> <p>Further to this, it is recommended that the Club should develop a Risk Management Plan/Policy to be implemented when using the facility to ensure that any potential risks are always minimised.</p> <p>Council holds insurance on the pavilion facilities, and it is highly recommended that Clubs organise contents insurance for non-structural items such as sporting equipment, furniture, electrical goods etc.</p>	Nil.
User contributions	Regular users will be required to pay a contribution towards maintenance for the use of equestrian facilities within 30 days upon receiving the invoice.	Nil.

Item	Club/Advisory responsibilities	Council responsibilities
	<p>Regular users will be invoiced annually. Users of equestrian facilities will be invoiced at the commencement of each financial year. Applications for use of Council properties will NOT be considered where user contributions remain unpaid from a previous allocation usage, or the conditions of use have NOT been adhered to.</p>	
Maintenance requests	Clubs to make maintenance requests via Council supplied maintenance request form.	Log and action as prioritised by Council.
Other	Anything not specified should be raised with the committee to determine responsibility before any action is taken.	Determine responsibility for anything not mentioned in these guidelines.

## Appendix 4. Lancefield Park Megafauna site

Lancefield Swamp is a highly significant archaeological site located at the south end of Lancefield Park. It was discovered in 1843 when James Mayne, a well-digger, found giant bones from very large extinct animals now known as megafauna.



Map of Lancefield Swamp, after a plan by Matt Peel 2001.

Source: researchgate.net - Archaeology at Lancefield Swamp

Excavations in the 1970's uncovered thousands of bones of giant kangaroos and other animals. Radiocarbon dates on charcoal found underneath the bones suggested that the bones were less than 26,000 years old.

In the 1990s, two other bone deposits were excavated, both some east of the 1970s excavations.

Further excavations were made in 2004.

The estimated ages of a larger sample of teeth found during this study yielded a wide range of dates, between approximately 40,000 – 80,000 years ago. Taken together, the evidence has been interpreted to suggest that Lancefield Swamp may have provided an important waterhole over many millennia, perhaps particularly in times of drought and as the climate became dryer.

Source: lancefield.org.au – Lancefield Megafauna