

# Essential Services Noise Management Plan 2024-2027

## Waste Collection and Street Cleaning



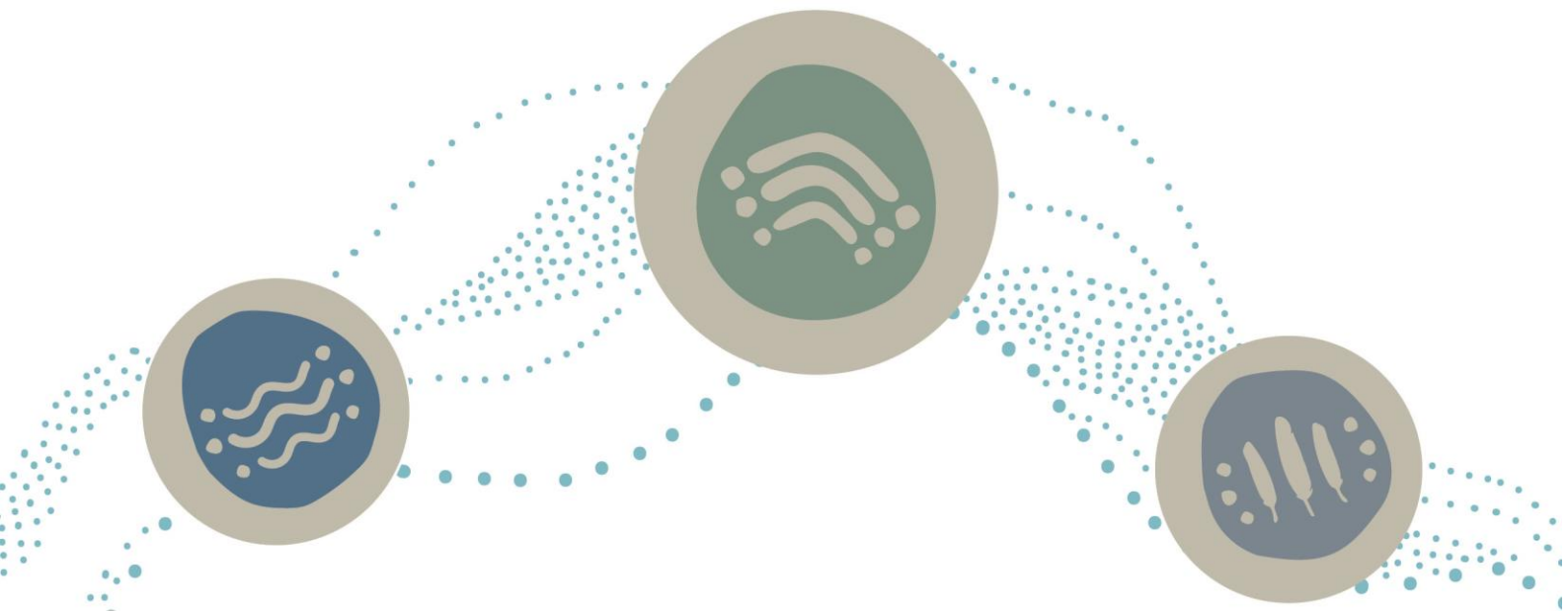
## Acknowledgment of Country

Macedon Ranges Shire Council acknowledges the Dja Dja Wurrung, Taungurung and Wurundjeri Woi-wurrung Peoples as the Traditional Owners and Custodians of this land and waterways. Council recognises their living cultures and ongoing connection to Country and pays respect to their Elders past, and present.

Council also acknowledges local Aboriginal and/or Torres Strait Islander residents of Macedon Ranges for their ongoing contribution to the diverse culture of our community.

### Artwork by Taungurung artist Maddi Moser

“Both artworks talk about our connection, connection to Country, connection to places and connection to each other. This is signified by the whimsical circles that form the ‘rivers; that wrap around our lands and ourselves. It reminds us that we should look out for one another.”



# Contents

<b>Acknowledgement of Country</b>	<b>1</b>
<b>MRSC Essential Services Noise Management Plan</b>	<b>3</b>
Introduction	3
Regulation	3
Equipment details	4
Justification for 'out-of-hours' work	5
Essential services work and mitigation steps	6
Impacted areas	7
Operator training	9
Community Information	10
Complaint Process	10
<b>References</b>	<b>10</b>
Appendix 1	11

# MRSC Essential Services Noise Management Plan

## Introduction

Council undertakes several essential services that need to occur early in the morning outside the normal allowable operating times in our township centres. This is due to vehicle activity during normal business hours preventing the essential services to occur. These essential services include the removal of waste and the cleaning of our roads, gutters and footpaths.

This service activity is essential to maintain safe roadways and to maintain the operation of the drainage system.

This noise management plan has been developed in line with best practice to inform residents of the time, place and frequency of when these activities will occur, and the steps Council is taking to mitigate noise effects during these times.

## Regulation

Currently, there is no specific EPA Victoria guidance on managing noise from street sweeping or kerbside activities. However, the general environmental duty and the unreasonable noise provisions in the Environment Protection Act 2017 apply to street sweeping and waste collection activities that emit noise, found in sections 25(1) and 166 of the Environment Protection Act.

### ***ENVIRONMENT PROTECTION ACT 2017 - SECT 166***

#### ***Unreasonable noise***

*A person must not, from a place or premises that are not residential premises:*

- (a) emit an unreasonable noise; or*
- (b) permit an unreasonable noise to be emitted.*

**Note:** Unreasonable noise is defined in section 3(1) -

*"unreasonable noise" means -*

- (a) noise that is unreasonable having regard to the following:*
  - (i) its volume, intensity or duration;*
  - (ii) its character;*
  - (iii) the time, place and other circumstances in which it is emitted;*
  - (iv) how often it is emitted;*

(v) any prescribed factors; and

(b) noise that is prescribed to be unreasonable noise; and

(c) does not include noise prescribed not to be unreasonable noise.

Essential services such as street and footpath sweeping are not covered by a guidance notice and as such fall outside the requirements. They are covered by the 'general environmental duty'.

The general environmental duty requires that when activity occurs outside 'normal' hours the provider of the service or activity must utilise 'industry best-practice' to conduct the activity. Current best practice is to produce a noise management plan for consultation and approval.



**Figure 1** Early morning cleaning by footpath sweeper in the Woodend township centre

## Equipment details

Council owns and operates one street sweeper and one pavement sweeper. Waste collection is undertaken by contractors on behalf of MRSC and is governed by contracts regarding the type of equipment and operational hours.

Table 1 presents the details of Council equipment types and noise levels.

Fleet /Plant Detail	Brand and Type	dB(A) Rating next to machine	dB(A) Rating 10m from the machine	Purchase Year
Street sweeper	Bucher VS 651 (soon to be retired)	109	93	2016
Street sweeper	Rosmech	89	65	2024
Footpath Sweeper	Johnston Sweepers C201	89	88	2020

When purchasing new equipment, noise emission data is reviewed as part of the tender evaluation process, to ensure the plant with the lowest practicable noise levels is selected.

As part of Council’s zero net emissions target and ongoing efforts towards more sustainable work practices, as part of phasing out the older street sweepers, officers will be investigating their replacement with electric street sweepers which have a lower noise output, on a reasonable and practicable basis.

### Justification for ‘out-of-hours’ work

Essential services that include waste collection, pavement and street sweeping must occur early in the morning in the Macedon Ranges township centres. This will allow access to pedestrian-free footpaths and gutters unimpeded by parked vehicles. As the street sweeper is a slow-moving and frequently stopping vehicle, it will be less of a traffic hazard operating in the early morning.

Clear access to township centre street gutters is essential to maintain drains as part of requirements under the Victorian Road Management Act. For Council to achieve this effectively, street sweeping is undertaken early morning before there are many cars parked at the kerb in non-residential business precincts. Due to increased pedestrian and vehicular traffic and reduced on-street parking in the area from 6am onwards, street and pavement cleaning activities must be completed before then. This requires a 4am start as a street sweeper travels at only 5 km/hr when sweeping.

Conducting the works ‘out-of-hours’ allows for:

- Improved safety for the public and Council’s workforce by significantly reducing pedestrian and vehicle interactions.
- Improved efficiency, affordability and reduced noise exposure with access to waste collection points resulting in shorter waste collection cycles and noise exposure.
- Improved asset functionality via maintenance outcomes with the best access to main roads ie no obstructing traffic, avoidance of road/construction works;

- Amenity improvement by regular sweeping to improve the presentation of our Shire's streetscapes.

Waste collection and street cleaning services are structured to times that best suit the activity in individual areas while minimising the impact on stakeholders. However, complete avoidance of disruption may be unavoidable.

## **Essential services work and mitigation steps**

### **Waste collection**

In the township centres, waste collection involves kerbside collection from residential and business properties as well as street bin clearance. Kerbside collection involves a weekly collection while street bin clearances occur every morning. Contractors are restricted to accessing township centre bins from 6am before vehicles block their activities.

Contractors follow the EPA guidance <sup>(1)</sup> for kerbside and street bin collections between the hours of 6am-6pm. Monday to Saturday.

Where possible, routes are selected for least impact on residential areas during that time. The collection of refuse is to be inline with the following criteria:

- Collections occurring once a week should be restricted to the hours 6 am-6 pm Monday to Saturday;
- Compaction should only be carried out while collection vehicles are on the move;
- Bottles should not be broken up at the point of collection;
- Routes that service entirely residential areas should be altered regularly to reduce early morning disturbance;
- Noisy verbal communication between operators should be avoided where possible.

### **Pavement cleaning & street sweeping**

Township centres require a higher level of service due to their higher levels of activity. This requires a once or twice-weekly pavement and street gutter cleaning regime. These machines move slowly and as such need to be able to start at 4am to fully service an area before 6am and the influx of vehicles and pedestrians.

To mitigate the effects of noise, no sweeping in residential streets will occur before 7am and no leaf blower machines or vacuums will be used before 7am.

(1) – EPA noise guidelines (Pub 1254, 2 May 2021 pg 6

There is an enhanced regime for sweeping activities during autumn due to higher leaf shedding, many of these locations are in township centres where sweeping may occur more often.

### Impacted areas

Township	Street	Starting at	Ending at
<b>Gisborne</b>	Hamilton Street	Kilmore Road	Prince Street
	Aitken Street	Fisher Street	Jacksons Creek
	Robertson Street	Aitken Street	Prince Street
	Prince Street	Robertson Street	Hamilton Street
	Brantome Street	Hamilton Street	End
<b>Kyneton</b>	Mollison Street	Donnithorne Street	Beauchamp Street
	High Street	Mollison Street	Ferguson Street
	Market Street	Mollison Street	Ferguson Street
	Jennings Street	Mollison Street	Ebden Street
	Baynton Street	Mollison Street	Ebden Street
	Piper Street	Mollison Street	Powlett Street
<b>Woodend</b>	High Street	Ashbourne Road	Forest Street
	Anslow Street	Collier Street	Nicholson Street
<b>New Gisborne</b>	Station Street	Saunders Rd	Railway Crossing
<b>Mt Macedon</b>	Mount Macedon Road	Salisbury Road	Douglas Road



Township	Street	Starting at	Ending at
<b>Macedon</b>	Victoria Street	Smith Street	Bruce Street
	Smith Street	Heath Street	Victoria Street
<b>Riddells Creek</b>	Gisborne-Kilmore Road Service Road	Merrifield Street	Bolithos Road
	Station Street	Gisborne-Kilmore Road	Hamilton Street
	Hamilton Street	Station Street	Stephens Street
	Stephens Street	Hamilton Street	Sutherlands Road
<b>Romsey</b>	Melbourne-Lancefield Road	Murphy Street	McIntosh Terrace
	Stawell Street	Melbourne-Lancefield Road	Pohlman Street
	Barry Street	Melbourne-Lancefield Road	William Street
<b>Lancefield</b>	Lancefield-Tooboorac Road Service Road	High Street	Dundas Street
	High Street	Melbourne-Lancefield Road	Park Street
	The Crescent	High Street	Dundas Street
	Kilmore/Lancefield Road	Melbourne-Lancefield Road	Gwen Place

## Operator training

Operators of Council-owned footpath and street sweeping machines are to undergo training on how to reduce the noise in the early hours of operation.

Council noise training will focus on noise mitigation and include (as a minimum):

- plan street cleaning routes to minimise noise impacts;
- plan various modes of operations and minimise noise emissions;
- engaging with residents and responding to complaints;
- inspecting equipment for excessive noise;
- vehicle and equipment training for all operators on commencement and followed by annual refresher training;
- the drivers are instructed not to reverse wherever practicable, to minimise noise levels.

Kerbside and street bin collections are covered by contract requirements to minimise disruptions to residents.



*Figure 2 Bluestone gutter cleaning in Lancefield*

## **Community Information**

Community information regarding the works carried out under this plan will be accessible on the Council's website and be communicated to all permanent occupiers potentially affected by noise from the works via their rates notices or other Council publications.

The information provided will include:

- a brief description of the works;
- where the Essential Services Noise Management Plan (ESNMP) can be accessed;
- a schedule of the works;
- how to lodge comments or complaints about the works;
- the duration of the current ESNMP approval, the date of the next review and how to make a submission.

## **Complaint Process**

All noise complaints regarding 'out-of-hours' waste collection and street cleaning essential services within the Macedon Ranges Shire boundaries carried out under this plan, will be recorded and investigated by the Resource Recovery Coordinator or delegated officer, in accordance with Council's Complaints Policy.

Noise complaints can be lodged with Council in writing, in person, via email or using the contact details published on Council's website.

The complainant will be advised in writing of the outcome of an investigation. Wherever practicable, work schedules and routes of travel will be modified/adjusted to minimise any adverse impacts to the amenity.

## **References**

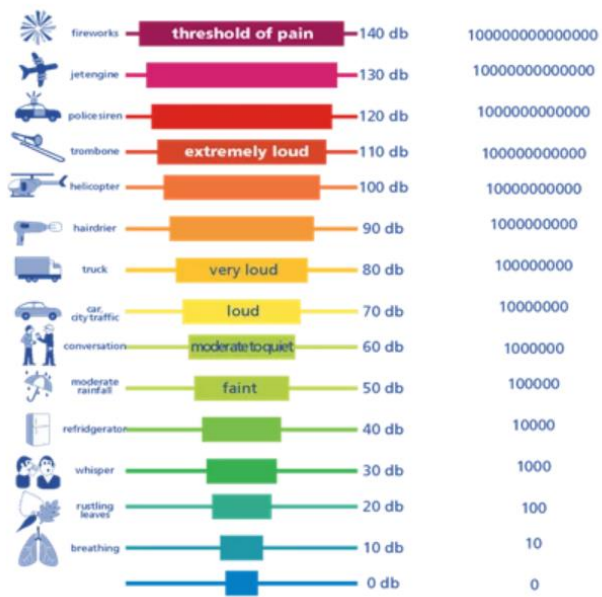
- > City of Perth Essential Services Noise Management Plan 2020 –Waste Collection and Street Cleaning

## Appendix 1

### > Glossary of Terms

**Table 3: Specific terms are defined below.**

Term	Definition
<b>Ambient Noise</b>	Means the level of noise from all sources, including background noise from near and far and the source of interest.
<b>Background Noise</b>	Background noise or residual noise is the noise level from sources other than the source of concern. When measuring environmental noise, residual sound is often a problem. One reason is that regulations often require that the noise from different types of sources be dealt with separately. This separation, e.g., of traffic noise from industrial noise, is often difficult to accomplish in practice. Another reason is that the measurements are normally carried out outdoors. Wind-induced noise, directly on the microphone and indirectly on trees, buildings, etc., may also affect the result. The character of these noise sources can make it difficult or even impossible to carry out any corrections.
<b>Decibel</b>	The decibel is the unit that describes the sound pressure and sound power levels of a noise source. It is a logarithmic scale referenced to the threshold of hearing.
<b>Receiver</b>	A noise-sensitive receiver is a premise occupied solely or mainly for residential or accommodation purposes, including hospitals, places of public worship, and aged care.



Infographic by commodious.co.uk

***Decibel readings of a range of activities***