



**Macedon
Ranges**
Shire Council

ATTACHMENTS

**Council Meeting
Under Separate Cover**

Wednesday 22 November 2023

Table of Contents

| | | |
|-------|---|----|
| COM.1 | PARTICIPATE Positive Ageing Plan 2020-2025 annual update | |
| | Attachment 1 PARTICIPATE Positive Ageing Plan - Year 3 Report and Year 4 Annual Plan..... | 4 |
| AO.2 | Macedon Ranges Shire Skate and BMX Strategy | |
| | Attachment 1 Attachment 1 - Draft Macedon Ranges Shire Skate and BMX Strategy..... | 41 |
| AO.3 | Romsey Skatepark Design Plan | |
| | Attachment 2 Romsey Skate Park - Community Consultation | 87 |



PARTICIPATE

Positive Ageing Plan

Year 3 Annual Review 2022-23
and Year 4 Action Plan 2023-24



PARTICIPATE Positive Ageing Plan – Year 3 Annual Review 2022-23 and Year 4 Action Plan 2023-24
Page 1

Acknowledgement of Country

Macedon Ranges Shire Council acknowledges the Dja Dja Wurrung, Taungurung and Wurundjeri Woi Wurrung Peoples as the Traditional Owners and Custodians of this land and waterways. Council recognises their living cultures and ongoing connection to Country and pays respect to their Elders past, present and emerging.

Council also acknowledges local Aboriginal and/or Torres Strait Islander residents of Macedon Ranges for their ongoing contribution to the diverse culture of our community.

PARTICIPATE - Positive Ageing Plan 2020-2025 – Action Plan 2023-24

PARTICIPATE is Council's current five-year plan for positive ageing. It is based on a substantial community engagement process, and on Council Plan priorities and strategies, along with various other important work across areas of Council.

PARTICIPATE supports Council's aim to be an age-friendly community and promotes a collaborative approach across Council and the community.

PARTICIPATE identifies four priority action areas:

1. Staying socially connected and active
2. Living well in the community
3. Needs are recognised in infrastructure, housing and the built environment
4. Being respected and valued by the community.



Consultation and engagement

Since PARTICIPATE was developed, further community engagement activities have taken place with older people in the community. The Macedon Ranges Aged Care Reform Community Conversation (September 2022) identified the following broadly consistent themes:

PARTICIPATE Positive Ageing Plan – Year 3 Annual Review 2022-23 and Year 4 Action Plan 2023-24
Page 3

1. Advocacy and support
2. Accessing social events
3. Health, in particular mental health
4. Support for existing groups
5. Infrastructure
6. Transport

A survey of Village Connect participants in 2022 gathered information regarding participation in events and activities by local older people and the ways they receive information.

The outcomes of all three consultations have been and will continue to be considered in Council's investment in supporting and promoting inclusion and wellbeing of older people across the Macedon Ranges.

Information from the various engagement activities, along with ongoing feedback and involvement of older residents across the shire, is used to guide annual planning for PARTICIPATE. The **Year 4 Action Plan** endeavours to reflect current community priorities, along with relevant changes in the local and broader community and environment.



PARTICIPATE Positive Ageing Plan – Year 3 Annual Review 2022-23 and Year 4 Action Plan 2023-24
Page 4

Evaluation and reporting

As stated in PARTICIPATE, this annual work plan will inform reporting to key stakeholders and review of strategies as appropriate in the light of changing priorities at all levels of government, emerging issues and opportunities such as new funding streams. Reporting will be undertaken as part of quarterly reporting processes and by annual review and briefing to Council.

It is acknowledged that the success of the plan relies on Council, identified stakeholders and the community working together. This annual plan will be evaluated against specified indicators and measures. Improving scores for people aged 65 years and over in the Local Government Community Satisfaction Survey will also be considered in evaluating Council's performance in achieving a community with Positive Ageing.

Some key achievements so far from PARTICIPATE 2020-2025

In service delivery

- The Social Support Individual service saw an approximate 50 per cent increase in demand since 2021, potentially as a result of lockdowns in Victoria. Council continued to deliver this service and respond to the growing demand until transition out of Commonwealth Home Support Programme (CHSP) services on 30 June 2023.
- Work for Victoria initiative - staffing support and assistance in 2020 and beyond during the start of the COVID-19 pandemic.
- In early 2021, volunteers were reinstated to support the delivery of services under the CHSP. The unit had lost 50 per cent of its volunteers during the pandemic. After reinstating volunteers and a new recruitment campaign we were able to build our volunteer numbers back up to previous levels.



In transition and reform

- Delivered aged care information sessions around Council transition out of CHSP service provision, reaching approximately 120 people in 2022.
- In the first half of 2023, Council undertook an extensive, planned process to transition out of provision of CHSP services. The Community Wellbeing service provision team engaged a new role, Transition Officer, to oversee the smooth transition of all clients. A transition team was created to liaise with service providers, Senior Citizens Clubs and the community.
- Undertook consultation and planning around best options for Council to reinvest in support for older people in the future.
- As part of the aged care reforms, the Regional Assessment Service (RAS) took part in the Commonwealth Department of Health Integrated assessment tool trial, to inform the development of a single assessment tool.

In community and network building

- Two age-friendly focused case studies were drafted and submitted to the World Health Organisation (WHO) Global Network for Age-friendly Communities website. These are now live. This is a requirement of Council to maintain our membership of the WHO network.
- Celebrated Seniors Festival each year, with celebration boxes offered to local seniors who are champions supporting positive ageing.

PARTICIPATE Positive Ageing Plan – Year 3 Annual Review 2022-23 and Year 4 Action Plan 2023-24
Page 6



In new initiatives

- Loddon Mallee Region Move It initiative funding - \$1.8 million was shared across the Loddon Mallee region. Project has been completed and findings shared.
- Successful grant application to Independent Living Assessment to deliver the Village Connect project from 2021-2024. Project is underway, with 579 individual engagements across 55 community events across seven towns. 27 events delivered, reaching over 100 people to date.
- Council signed the EveryAGE Counts pledge in 2022, joining the coalition. Subsequent activities of this initiative included a staff 'am I ageist?' quiz. Celebrated this achievement as part of Seniors Festival 'Celebrating Ageing' event.
- Secured funding and initiated delivery of Aged Care Volunteer Visitors Scheme (ACVVS).
- Council endorsed as a Carer Friendly Council through Carers Victoria.



Some key challenges

- COVID-19 related impact on the health and wellbeing of older people in the shire has resulted in poorer health and an increase in demand for services or support.
- Standing down of volunteers during COVID-19 pandemic meant there was an impact on the services delivered, and also on our goals of growing this area. There was approximately a 50 per cent decline in volunteers over this time.
- Supporting older people to re-engage post COVID-19 has been challenging. Many older people are still hesitant to engage and participate in community today.
- Engaging with and supporting clients and community in preparation for Council's transition out of CHSP provision.
- Managing significant internal change around transition out of CHSP service-provision and refocusing of priorities and resources.



Data and trends in ageing

As Australia's population ages, the age profile of the older population is also projected to change. By 2066, it is projected¹:

- There will be just over 4.5 million people aged 65–74.
- People aged 75–84 will account for one-third (34%, 3.5 million) of the older population.
- 1 in 5 older people will be aged 85 and over (21%, 2.2 million) (ABS 2018).

Analysis of the service age groups of Macedon Ranges Shire in 2021, compared to Regional Victoria, shows that there was a higher proportion of people in the younger age groups (0 to 17 years) and a lower proportion of people in the older age groups (60+ years).

Overall, 24.1 per cent of the population was aged between 0 and 17, and 25.8 per cent were aged 60 years and over, compared with 21.0 per cent and 29.3 per cent respectively for Regional Victoria.

¹ <https://www.aihw.gov.au/reports/older-people/older-australians/contents/demographic-profile>

The 2018 Survey of Disability, Ageing and Carers, Australia² indicated that prevalence of disability increased with age - one in nine (11.6%) people aged 0-64 years and one in two (49.6%) people aged 65 years and over had disability.

Need for assistance

In 2018, among all older Australians, 38.0 per cent (1.5 million people) needed assistance with everyday activities, similar to 2015 (38.6%)³. Older people were most likely to need assistance with:

- health care (22.5%);
- property maintenance (20.0%); and
- household chores (16.0%).



² <https://www.abs.gov.au/statistics/health/disability/disability-ageing-and-carers-australia-summary-findings/latest-release>

³ <https://profile.id.com.au/Macedon-ranges/assistance>

Year 3 Annual Review 2022-23

STATUS KEY: Completed In progress

Priority Action Area 1 – Staying socially connected and active

| PARTICIPATE ACTION | LEAD AREA | PARTNERS | YEAR 3 OUTCOMES | STATUS |
|---|--------------------------------|---|--|--------|
| STRATEGY 1.1: Deliver accessible and inclusive programs, activities and events | | | | |
| Coordinate and promote accessible and inclusive programs, activities and events | Community Wellbeing | <i>Community groups</i> <i>Community health and service provider organisations</i> | Continued to deliver Village Connect. Explored opportunities to extend Village Connect beyond funding timeline. | |
| STRATEGY 1.2 Support the community to deliver a diverse range of activities, inclusive of older people, that support social connections | | | | |
| Direct Council community grant funding to initiatives that emphasise inclusiveness | Community Strengthening | <i>Community groups</i> <i>Community health and service provider organisations</i> | Council's community funded grants applications have been assessed with a positive ageing lens. Allocated some grants to community groups that support older people to be engaged in the community. | |
| Support and encourage greater diversity in community organisations catering for older people and be inclusive of people regardless of their ability, cultural background, gender, sexual orientation. Deliver | Community Wellbeing | <i>Community groups</i> <i>Community health and service provider organisations</i> | Council has worked with Sunbury Cobaw Community Health to coordinate events that raise awareness of inclusiveness. Village Connect continues to provide a safe space for all individuals to access. | |

PARTICIPATE Positive Ageing Plan – Year 3 Annual Review 2022-23 and Year 4 Action Plan 2023-24
Page 11

| | | | | |
|--|----------------------------|---|--|--|
| new initiatives as appropriate to support this | | | | |
| Promote and share outcomes of age-friendly local projects and support them to be sustainable | Community Wellbeing | <i>Volunteers</i> <i>Community health and service provider organisations</i> | Through the CHSP Digital Connect program, Council has worked with eligible residents to increase digital connect skills. With the exit from CHSP at June 2023, Village Connect will continue to work in this space through partnering with education providers. Council has been successful in receiving an Aged Care Volunteer Visiting Scheme grant. With the exit from CHSP, this has provided a program to continue to engage volunteers and to support older people. | |
| STRATEGY 1.3: Support the contribution of older people in the Macedon Ranges economy as workers and volunteers | | | | |
| Facilitate diverse and meaningful volunteer and work opportunities for older people (within and outside Council) | Community Wellbeing | <i>Bendigo Volunteer Resource Centre</i> <i>Service providers</i> <i>Community groups</i> | Through Council's CHSP program, 20 volunteers were engaged to provide support to older people to access appointments and the community. Council supported Rotary in facilitating the Macedon Ranges Volunteer Expo, where organisations were able to promote their volunteering opportunities. Council, in partnership with Bendigo Volunteer Resource Centre, are supporting volunteer organisations across the Macedon Ranges to promote opportunities to all community members. | |
| Improve access to volunteer and work opportunities for older people | Community Wellbeing | <i>Bendigo Volunteer Resource Centre</i> <i>Service providers</i> | Internally, Council has undertaken the implementation of the Every Age Counts initiative, to raise awareness of age discrimination in the workplace. Through the exit from CHSP, Council has worked with external volunteer organisations to provide opportunities for volunteers to continue to volunteer in differing roles. | |

| | | | | |
|--|--|-------------------------|--|--|
| | | <i>Community groups</i> | In partnership with Bendigo Volunteer Resource Centre, work has commenced on capturing all volunteering opportunities across the region and supporting organisations to be more inclusive to volunteers. | |
|--|--|-------------------------|--|--|

Priority Action Area 2 – Living well in community

| <i>PARTICIPATE ACTION</i> | <i>LEAD AREA</i> | <i>PARTNERS</i> | <i>YEAR 3 OUTCOMES</i> | <i>STATUS</i> |
|--|----------------------------|--|--|---------------|
| STRATEGY 2.1: Support people to live safely and independently in the community | | | | |
| Continue to support and encourage older people to live independently and enable them to participate and contribute to their community | Community Wellbeing | <i>Community health and service provider organisations</i> | Council provision of CHSP services enabling support for community members to remain independent in their home. Through the RAS, 938 assessments have occurred, with referrals to appropriate providers to assist residents to remain independent in their home and community. | |
| Provide information to the community about local services and supports, evolving aged care sector reform including the outcomes of the Royal Commission into Aged Care | Community Wellbeing | <i>Community health and service provider organisations</i> | Through the transition out of CHSP services, information on support services has been provided to clients and their carers, as well as the wider community. The community has been made aware that Council exited CHSP services due to changes in the aged care sector. | |
| Identify organisational and service implications of the changing landscape of aged care reform | Community Wellbeing | | Council has continued to be briefed on aged care reforms, with a decision in 2022 to exit community aged care, due to the implications of this reform. | |
| Raise awareness of mental health issues, and educate the community to enable them to support older people who are experiencing mental health problems | Community Wellbeing | <i>Community health and service provider organisations</i> | Council has facilitated four Mental Health First Aid courses for older people within the year. The course enables those in the community to support older people who may be facing some challenges with their mental health. | |

| | | | | |
|---|----------------------------|--|--|--|
| Support the community to be well informed about how to keep safe during emergencies | Community Wellbeing | <i>Community Strengthening</i> <i>Service providers</i> | Council continues to manage the Macedon Ranges Vulnerable Persons Register and raise awareness of this register to service providers that access this. | |
| In partnership with local public and community health agencies, support networks and community groups, raise awareness about dementia and support people living with dementia and their carers | Community Wellbeing | <i>Community groups</i> <i>Community health and service provider organisations</i> | Through the Village Connect program, and in partnership with Dementia Australia, facilitated events in the community to raise awareness of dementia. Council has recently become a Carer Friendly Council, which raises awareness of the role of carers in our community. This work will evolve in the coming year. | |
| Work in partnership with local public and community health agencies, networks and community groups to investigate new ways to support community members to access and use technology (including phones, tablet, internet) | Community Wellbeing | <i>Community health and service provider organisations</i> <i>Community groups / organisations</i> <i>Goldfields Library</i> | Through CHSP Social Support Individual, 38 residents were provided with sessions to enhance digital connect skills. In partnership with libraries and other community groups, the Village Connect program has provided digital connect sessions. | |
| Identify gaps in services for older people and advocate for local needs in relation to diversity and disadvantage | Community Wellbeing | <i>Community health and service provider organisations</i> <i>Community Housing Organisations (CHO)</i> | During Council’s transition out of CHSP services, officers met with the Commonwealth Department of Health on a regular basis and were able to advocate for the specific needs of older people in Macedon Ranges, in particular in relation to service gaps. Through the creation and adoption of the Affordable Housing Policy, the need for increased affordable housing stock across the Macedon Ranges has been advocated. | |

| | | | | |
|---|---------------------------------|---|---|--|
| | | | Council was successful in securing, in partnership with CHO Wintringham, a Big Housing Build grant for \$5 million to develop Council owned seniors housing in Lancefield. | |
| Continue to invest in older people by actively sourcing appropriate funding opportunities in partnership with the community | Community Wellbeing | | Through the transition out of CHSP services, Council consulted with the community to identify where Council can reinvest to support older people. Through this, Council continues to seek external funding to implement the priorities identified. Council has been successful in becoming an Aged Care Volunteer Visiting Scheme organisation and continues to implement the Village Hubs project. | |
| Collaborate with the community to increase the number of programs and activities available to older people | Community Wellbeing | <i>Community Groups</i> | Council continues to work with all five Senior Citizens Clubs to support an increase in the number of programs they offer. The Village Connect program is creating and facilitating programs that will then be continued within some Neighbourhood Houses. | |
| STRATEGY 2.2 Enable and empower people to make informed decisions about their needs and interests | | | | |
| Educate the community about services and supports that assist them to advocate for their rights | Community Wellbeing | <i>Older Persons Advocacy Network Elder Rights Advocacy Seniors Rights Victoria</i> | Ten education and information sessions provided on seniors' rights, elder abuse and supports and services. | |
| Disseminate information that enables older residents to | Planning and Environment | <i>Community groups</i> | Supported the Healthy Homes Project (Macedon Ranges Sustainability Group) with clients in the CHSP program | |

| | | | | |
|--|----------------------------|---|---|--|
| improve environmental sustainability in their homes and reduce utilities costs | | | being encouraged and supported to take part in the program. Bridging the Divide project completed. Energy Bonus promoted through all networks and partners, with assistance from volunteers where needed. | |
| STRATEGY 2.3 Support and advocate for the interests of the community in a changing aged care sector | | | | |
| Maintain an active watch on aged care reform impacting the shire | Community Wellbeing | <i>Service providers and community groups</i> | Council continues to be briefed on the aged care sector reform. The transition out of community aged care services was in response to aged care sector reform. | |
| Continue to advocate to Australian and Victorian Governments for fair and equitable access to service and support needs of the community | Community Wellbeing | <i>Service providers and community groups</i> | Council continues to meet with representatives from Victorian and Commonwealth governments to advocate for the needs of the Macedon Ranges. Through the 2022/23 year, officers met with the Commonwealth regularly to advocate for the needs of our community in relation to the transition of CHSP services. | |
| Develop and implement a plan for Council's future role in supporting older residents to live safely and independently | Community Wellbeing | <i>Community groups, community members</i> | Council, as part of the transition out of CHSP services, consulted with the community on where to reinvest into supports for older people post June 2023. The outcome of this consultation will inform PARTICIPATE Year 4 Actions. | |

Priority Action Area 3: Needs are recognised in infrastructure, housing and the built environment

| PARTICIPATE ACTION | LEAD AREA | PARTNERS | YEAR 3 OUTCOMES | STATUS |
|--|----------------------------------|----------|---|--------|
| STRATEGY 3.1 Improve accessibility of Council facilities and buildings | | | | |
| Plan for inclusion of people of all ages and abilities in design and development of the new Macedon Ranges Regional Sports Precinct | Project Management Office | | Participated in internal consultation in 2021 to advocate for the needs of older people. Will continue to provide feedback through the stages of development. | |
| STRATEGY 3.2 Collaborate with community to identify and respond to transport needs | | | | |
| Advocate for Victorian Government funding for a feasibility study to expand bus services and on-demand transport within and between Macedon Ranges townships. <i>(On-demand transport includes taxis, ride-sharing, car-sharing, volunteer transport)</i> | Community Wellbeing | | Council is actively looking for opportunities for funding to undertake mapping of already in place transport options, and a feasibility study of transport options to be provided to the community. | |

Priority Action Area 4: Being respected and valued by community

| <i>PARTICIPATE ACTION</i> | <i>LEAD AREA</i> | <i>PARTNERS</i> | <i>YEAR 3 OUTCOMES</i> | <i>STATUS</i> |
|--|----------------------------|---|---|---------------|
| STRATEGY 4.1 Deliver opportunities for older people to contribute to decision making processes | | | | |
| Inform, enable and encourage older residents to 'Have Your Say' on Council-related activities | Community Wellbeing | <i>Community group.</i> <i>Community health and service provider organisations</i> | The Over 55's facebook page shares information and links to community in relation to current consultations. All consultations are also promoted through the healthy ageing newsletter. | |
| Ensure that Council policy and plans for communication, consultation and advocacy include processes that address the needs of older people | Community Wellbeing | | The Community Connections team continues to review all plans and policies to ensure that they meet the needs of older people. | |
| STRATEGY 4.2 Inform older people about Council decision that affect them | | | | |
| Communicate and share information in a range of ways/methods to cater to the diverse needs of the community e.g. newsletters, information and education sessions | Community Wellbeing | | In 2022/23 Council decided to exit community aged care. A communications plan was implemented to provide information in relation to the transition and how it would impact clients and the wider community. | |
| STRATEGY 4.3: Promote older people's rights and reduce risks to their safety | | | | |
| Reduce elder abuse by raising awareness of older people's rights and how | Community Wellbeing | <i>Elder rights advocacy</i> | Two elder rights community education sessions were held for service providers and community members. | |

PARTICIPATE Positive Ageing Plan – Year 3 Annual Review 2022-23 and Year 4 Action Plan 2023-24
Page 19

| | | | | |
|---|----------------------------|---|---|--|
| risks of abuse can be addressed | | | | |
| Promote personal safeguards against fraud/scams | Community Wellbeing | <i>Digital connection education providers</i> | Four digital safety information sessions were facilitated through the Village Connect program, | |
| STRATEGY 4.4: Recognise and celebrate age friendly aspects to the local community | | | | |
| Explore initiatives to recognise local businesses, groups, organisations and services that celebrate ageing and/or adopted positive ageing practices and strategies to support older people | Community Wellbeing | <i>Community groups</i> | To celebrate senior's week, a celebration event was held to recognise older people that have contributed to the community. 20 recipients were celebrated at an event, and also promoted through Council social media platforms. | |
| STRATEGY 4.5: Deliver initiatives that address ageism and promote age friendly practices | | | | |
| Deliver on annual requirements of membership to the World Health Organisation's Global Network of Age Friendly Communities Network and the Age Friendly Victoria Declaration | Community Wellbeing | | Council has met requirements of its membership as a WHO aged friendly organisation, with 2 case studies provided. | |

Year 4 Action Plan 2023-24

Priority Action Area 1 – Staying socially connected and active

| <i>PARTICIPATE ACTION</i> | <i>LEAD AREA</i> | <i>PARTNERS</i> | <i>IMPLEMENT THROUGH</i> | <i>INDICATORS AND MEASURES</i> |
|---|----------------------------|---|---|--|
| STRATEGY 1.1: Deliver accessible and inclusive programs, activities and events | | | | |
| Coordinate and promote accessible and inclusive programs, activities and events | Community Wellbeing | <i>Community groups</i> | Continue to deliver Village Connect. | Village Connect delivered in line with annual plan |
| | | <i>Community health and service provider organisations</i> | Explore opportunities to extend Village Connect beyond funding timeline | Options to enable extension of Village Connect identified and next steps planned |
| | Community Wellbeing | <i>Community Strengthening</i> | Recognise Seniors Month, Victoria Seniors Festival, National Carers Week, World Elder Abuse Awareness Day, Dementia Awareness Week, International Day of Older Persons - Ageism Awareness Day | Participation levels for Council programs and Council-sponsored events for older people |
| | | <i>Community groups</i> <i>Community health and service provider organisations</i> | Deliver Aged Care Volunteer Visiting Service in line with funding agreement. | Positive feedback and media on Council-sponsored events for older people Aged Care Volunteer Visiting Service established and meeting delivery targets. |
| Community Wellbeing | | Promote and participate in EveryAGE counts Coalition. | EveryAGE counts activities led by Council - within Council and in community | |

| | | | | |
|--|---|--------------------------------|--|--|
| | Project Management Office | <i>Community Strengthening</i> | Have accessible venues available for Council events and for public use | Council events are held in accessible venues Selection of accessible Council venues available for community events |
| | Strategic Planning and Environment | <i>Community Wellbeing</i> | Plan for and facilitate safe and accessible paths of travel across the community | Accessible paths of travel identified as a priority in planning, building and maintenance conducted by Council All Council planning work reviewed to ensure access factors are considered in line with legislative requirements |
| Explore opportunities to improve access to local programs, activities and events <i>(Transport is the main gap identified since Council exited CHSP services)</i> | Community Wellbeing | | Community Connection team to provide education via direct contact with community groups in regards to transport option in and out of our shire Clarify gaps and issues in (CHSP) transport services for older people and advocate for older residents to service providers/funders Identify and follow up potential resourcing/means to address priority improvements in local transport options | Transport options identified Education delivered to priority community groups Feedback regarding transport service gaps collated and presented to service-providers / funders on behalf of older residents Follow up of any funding options for improvements to local transport |
| STRATEGY 1.2: Support the community to deliver a diverse range of activities inclusive of older people that support social connections | | | | |
| Direct Council community grant funding to initiatives that emphasise inclusiveness | Community Strengthening | <i>Community Wellbeing</i> | Promote grant opportunities through Positive Ageing database, Over 55s Facebook, eNews | Number of Community Funding applications and number of grants allocated to initiatives that are inclusive of older people |

| | | | | |
|--|-----------------------------------|---|---|---|
| <p>Support and encourage greater diversity in community organisations/groups and encourage and promote new initiatives for inclusion of older people in groups, teams, clubs</p> | <p>Community Wellbeing</p> | <p><i>Community Strengthening</i></p> <p><i>Open Spaces and Recreation</i></p> <p><i>Community groups</i></p> <p><i>Community health and service provider organisations</i></p> | <p>Deliver annual community education sessions and produce/ share resources to support and encourage diversity</p> | <p>Number of participants attending information sessions</p> <p>Diversity resources shared and how widely disseminated</p> |
| <p>Promote, partner with and share age-friendly local projects and support them to be sustainable</p> <p>Support local groups and organisations to increase opportunities for social connections and participation</p> | <p>Community Wellbeing</p> | <p><i>Communications and Engagement</i></p> <p><i>Open Spaces and Recreation</i></p> <p><i>Community groups</i></p> <p><i>Community health and service provider organisations</i></p> | <p>Coordinate regular networking meetings (building on those conducted in 2022-23) to discuss issues faced by Macedon Ranges providers and identify and address emerging issues and service gaps and enhance referral processes</p> <p>Deliver training for Council staff, outside stakeholders and CHSP service provision providers to enhance workforce knowledge and skills</p> <p>Training will be provided face to face to meet the needs of staff development</p> <p>Disseminate timely information to local CHSP providers around changes in the CHSP</p> <p>Disseminate a compilation of information and updates on transport within CHSP program with an ongoing reform transition focus and best practice information</p> | <p>Four SSD network meetings coordinated throughout the year with aims identified</p> <p>Local initiatives promoted through Council networks and media</p> <p>Training events completed, attendance and feedback</p> <p>Information disseminated and identified as useful for CHSP providers</p> <p>Transport information compiled and disseminated</p> |

| | | | | |
|--|------------------------------------|--|--|---|
| | | | <p>Participate actively in Sector Support and Development (SSD) Community of Practice (COP)</p> <p>Offer to promote inclusive initiatives for community sport, social and arts organisations and groups</p> <p>Identify ways to partner with community organisations and groups that assists project sustainability</p> | <p>Attendance, contribution and development of resources relating to COP (details in SSD Activity Work Plan (AWP))</p> <p>Promotion of inclusive initiatives through Council media</p> <p>A resource to share ways to work with Council to achieve sustainability of projects in the community that are inclusive of older people – developed and disseminated</p> |
| STRATEGY 1.3: Support the contribution of older people to Macedon Ranges' economy as workers and volunteers | | | | |
| <p>Facilitate diverse and meaningful volunteer and work opportunities for older people (within and outside Council)</p> <p>Improve access to volunteer and work opportunities for older people</p> | <p>People and Wellbeing</p> | <p><i>Community Wellbeing</i></p> <p><i>Economic Development and Visitor Economy</i></p> <p><i>Bendigo Volunteer Resource Centre</i></p> | <p>Encouraging and supporting older people to participate in Council volunteering opportunities including: Aged Care Volunteer Visitor Scheme, environment, visitor information, the arts</p> <p>Council recruitment and employment policy supportive of older workers</p> <p>Promote value and importance of older workers and volunteers in Council media</p> <p>Collaborate with Bendigo Volunteer Resource Centre, other organisations and across Council to coordinate,</p> | <p>Number of older people involved in Council volunteering programs and extent to which they stay involved over time.</p> <p>Satisfaction of older people involved in volunteering with Council.</p> <p>Council recruitment and employment policy facilitates employment of people of all ages</p> <p>EEO policy reviewed to ensure equal opportunity for older workers</p> <p>Number of older workers employed by Council</p> <p>Network established to promote and support volunteering in local area</p> |

| | | | |
|--|--|---|--|
| | | <p>support, engage and recognise volunteers</p> <p>Organise volunteering information sessions to assist CHSP providers in understanding their requirements</p> <p>Conduct a volunteer activity to provide opportunities for CHSP providers to advertise for and recruit volunteers</p> <p>Deliver training sessions for volunteers to understand and demystify the reforms</p> <p>Coordinate development training sessions for volunteers (based on feedback from providers), which may include e.g. Privacy and Confidentiality; Professional Boundaries</p> | <p>Two volunteering information sessions delivered, well attended, and positive feedback received</p> <p>Activity held and evaluated</p> <p>Volunteers participate in development training opportunities</p> <p>At least two development training sessions for volunteers delivered in partnership with the Macedon Ranges Regional Assessment Service</p> |
|--|--|---|--|

Priority Action Area 2: Living well in the community

| ACTION | LEAD AREA | PARTNERS | IMPLEMENT THROUGH | INDICATORS AND MEASURES |
|---|----------------------------|--------------------------------------|--|---|
| STRATEGY 2.1: Support people to live safely and independently in the community | | | | |
| Continue to support and encourage older people to live independently and enable them to participate and contribute to their community | Community Wellbeing | | Delivery of Regional Assessment Services Delivery of Village Connect Delivery of Aged Care Volunteer Visiting Services | As per program guidelines, targets and work plans |
| Provide information to the community about local services and supports and evolving aged care sector reform | Community Wellbeing | <i>Communications and Engagement</i> | Consult with community leaders regarding gaps in knowledge of aged care services, particularly CHSP Attend older person community group gatherings to disseminate information around CHSP and the reforms Provide consumers with simple, understandable information on aged care, particularly those unsure of where or how to start their aged care journey Deliver information sessions including Aged Care Navigation, My Aged Care Scam Awareness | Council attend at least 10 community group gatherings, at which: Feedback is sought about their knowledge of aged care services; and Information about services is disseminated Respond to at least one enquiry per week about CHSP services in Macedon Ranges Deliver at least two information sessions for older residents |
| Identify organisational and service implications of the changing landscape of aged care | Community Wellbeing | | Continue to inform Council of changes in the aged care space Plan for future of RAS from July 2024 | Timely briefings provided to Council Endorsed RAS plan in place |

| | | | | |
|--|--------------------------------|--|---|---|
| | | | Identify and plan to address gaps arising from changes | Gaps identified, options identified, next steps in place |
| Raise awareness of mental health issues, and educate the community to enable them to support older people who are experiencing mental health problems | Community Wellbeing | <i>Communications and Engagement</i> | Where opportunities arise, work with other agencies to promote and support their awareness-raising initiatives | Mental health awareness-raising initiatives promoted in Council media |
| Support the community to be well informed about how to keep safe during emergencies | Community Strengthening | <i>Community Wellbeing</i> <i>Community organisations</i> | Work in partnership to deliver emergency information and planning that is inclusive of older people | Education planned, delivered and evaluated |
| In partnership with local public and community health agencies, support networks and community groups, raise awareness about dementia and support people living with dementia and their carers | Community Wellbeing | <i>Local public and community health agencies</i> | Coordinator Community Connections is part of a local networking committee in relation to dementia services and respite for carers | SSD providing two Educational Dementia Immersive Experience (EDIE) education sessions Evidence of linking with other agencies to promote awareness |
| Work in partnership with local public and community health agencies, networks and community groups to investigate new ways to support community members to access and use technology | Community Wellbeing | | Village Connect hold technology information events facilitated by NBN Community Ambassadors | Five sessions in Aug-Sept 2023 |

| | | | | |
|---|----------------------------|--|---|---|
| (including phones, tablet, internet) | | | | |
| Identify gaps in services for older people and advocate for local needs in relation to diversity and disadvantage | Community Wellbeing | | <p>Initiate consultation with older people around their needs and priorities for future plans</p> <p>Continue to advocate for an increase in affordable housing for seniors in the Macedon Ranges</p> <p>Continue to work with housing organisations and Carefinders to support older people that are homeless or at risk of being homeless</p> | <p>Engagement/consultation plan in place for 2024-25 and ongoing planning</p> <p>Input provided into consultation, policy and planning relating to affordable housing for seniors</p> <p>Interaction and relationship building with housing organisations and Carefinders</p> |
| Investigate reported gaps in health and medical services and advocate to increase availability where need is evidenced | Community Wellbeing | | <p>Investigate and initiate appropriate response where relevant issues are raised by the community</p> <p>Establish record-keeping to monitor issues raised and reported by community</p> | <p>Issues raised by community are followed up and response provided</p> <p>System in place to monitor community contacts, response and follow-up</p> |
| Continue to invest in older people by actively sourcing appropriate funding opportunities in partnership with the community | Community Wellbeing | <p><i>Community groups</i></p> <p><i>Community health and service provider organisations</i></p> | <p>Work with Senior Citizens Clubs in their transition period – objective to establish alternative funding, increase memberships and scope of activities. (\$50,000 funding available to look at objectives and opportunities)</p> | <p>Senior Citizens Clubs have transitioned to sustainable model and have a future plan with objectives and opportunities identified</p> |
| Collaborate with the community to increase the number of programs and activities available to older people | Community Wellbeing | <p><i>Facilities and Operations</i></p> <p><i>Community groups</i></p> | <p>Community connection to continue with transition plans with group's continuing on support provided last year</p> <p>Transport is the gap identified since Council excited CHSP services</p> | <p>Transition plans in place and implementation underway</p> <p>Transport issues clarified and options identified</p> |

| | | | | |
|--|---|--|---|---|
| | | <i>Community health and service provider organisations</i> | <p>Inform networks of grant opportunities</p> <p>Ongoing funding for SSD and Village Connect</p> <p>New funding to support companionship via ACVVS program</p> | <p>Grant opportunities identified</p> <p>Sustainability options for SSD and Village connect investigated</p> <p>ACVVS underway</p> |
| STRATEGY 2.2: Enable and empower people to make informed decisions about their needs and interests | | | | |
| Disseminate information that enables older residents to improve environmental sustainability in their homes and reduce utilities costs | Strategic Planning and Environment | <p><i>Communications and Engagement</i></p> <p><i>Community Wellbeing</i></p> <p><i>Department of Energy, Environment and Climate Action</i></p> | <p>Share news and information from Council, state, federal and community programs, grants, initiatives regarding home sustainability and reduced utility costs via media and networks</p> <p>Support older people to apply for relevant opportunities</p> <p>Provide Home Energy Efficiency education outlining health and wellbeing benefits associated to thermally efficient homes</p> | <p>Older residents receive targeted, timely information relating to environmental sustainability and reduced utility costs in their homes</p> <p>Older residents access opportunities to reduce energy use or reduce home costs</p> <p>Level of involvement of older people in education plus feedback received</p> |
| STRATEGY 2.3: Support and advocate for the interests of the community in a changing aged care sector | | | | |
| Maintain an active watch on aged care reform changes impacting the shire | Community Wellbeing | | <p>Continue to monitor aged care reforms and disseminate info to CHSP providers</p> <p>Advocate for ways to address issues and gaps</p> <p>Implement changes arising from reform of assessment framework</p> | Reporting on SSD AWP in regards to meeting targets and feeding back lack of resources, if any |

| | | | | |
|---|--|--|---|--|
| | | | Attendance at Municipal Association of Victoria (MAV) Community Care meetings to enable effective networking and information exchange Communicate with Commonwealth Department of Health, VicHealth and PHN to raise awareness of limited resources in the Macedon Ranges | |
| Continue to advocate to Australian and Victorian governments for fair and equitable access to service and support needs of the community Develop and implement a plan for Council's future role in supporting older residents to live safely and independently | All departments in their area of responsibility Community Wellbeing | | Raise access concerns with Victorian and Australian governments Engage with the community to identify concerns and solutions Positive Ageing Plan 2024 onwards Consider gaps left from transition Council decisions made about ongoing role in this sector, predicted changes across the sector, internal structure in Council, funding opportunities | Issues and concerns forwarded to Victorian and Australian governments Community engagement improvements Ongoing planning completed Council make decisions around positive ageing on an informed basis |

Priority Action Area 3: Needs are recognised in infrastructure, housing and the built environment

| ACTION | LEAD AREA | PARTNERS | IMPLEMENT THROUGH | INDICATORS AND MEASURES |
|---|----------------------------------|----------------------------|--|---|
| STRATEGY 3.1: Improve accessibility of Council facilities and buildings | | | | |
| Plan for inclusion of people of all ages and abilities in design and development of the new Macedon Ranges Regional Sports Precinct | Project Management Office | <i>Community Wellbeing</i> | Continue to advocate for accessible and aged-friendly infra-structure and programs at Macedon Ranges Regional Sports Precinct (MRRSP) | Community feedback on MRRSP accessibility and inclusiveness Utilisation of MRRSP by older people and groups |
| Review assets by auditing compliance with accessibility requirements (including age and dementia friendliness) and seek to address gaps identified in audit | Project Management Office | <i>Community Wellbeing</i> | Council's Disability Action Plan 2023-24 includes an action to assess asset compliance across all Council owned/ operated facilities with the Disability Discrimination Act– to raise awareness and guide a future workplan (pending funding allocation) of building upgrade Link with DAP asset compliance action (above) to incorporate age and dementia friendliness in the assessment | Plan to conduct assessment of asset compliance has been agreed Assessment program initiated Assessors include people with lived experience or expertise |
| Use accessible design standards for new/upgraded signage in Council owned and managed facilities and at Council sponsored events | Project Management Office | | Review Council policy for signage to ensure it includes accessible design standards and requirements | Policy reviewed and reflects standards Policy operational |
| STRATEGY 3.2: Deliver improvements that support older people to move around safely and easily | | | | |

| | | | | |
|--|---|----------------------------------|---|--|
| Improve accessible parking in key locations | Community Wellbeing | <i>Facilities and Operations</i> | Complete review of accessible parking and identify priority options to improve, with potential resourcing (align to work in Disability Action Plan 2023-24) | Review completed and recommendations made, with resourcing identified |
| Deliver improvements to footpaths, including footpath connectivity, to meet local needs | Engineering and Resource Recovery | | Ongoing repair and maintenance to keep existing infrastructure safe Identify priority improvements and seek resourcing for future programs | Footpaths maintained in safe and accessible condition Prioritised plans in place for improvements to footpaths and accessible paths of travel, with resourcing options identified |
| STRATEGY 3.3: Collaborate with community to identify and respond to transport needs | | | | |
| Advocate to the Victorian Government for improved public transport within the region | Community Strengthening | | Keep watch for opportunities and follow through if available | Available opportunities identified and accessed |
| STRATEGY 3.4: Actively seek and respond to the needs of people of all ages and abilities in planning processes | | | | |
| Ensure structure plans consider diverse housing options to reflect demographic change, including smaller dwellings for older people in well serviced locations | Strategic Planning and Environment | | Council's Affordable Housing Policy Loddon Mallee Housing Action Plan | All Council structure plans and urban design plans provide for diverse housing options Planning and development in line with Council Affordable Housing Policy Loddon Mallee Housing Action Plan implementation underway in Macedon Ranges |
| Ensure that planning for all aspects of the built environment addresses accessibility issues for | Strategic Planning and Environment | <i>Community Wellbeing</i> | Review all plans against accessibility requirements and ensure plans go to right people to feed in (include Gisborne Urban Design Framework) | Council plans for built environment are reviewed for accessibility features |

| | | | | |
|---|--|--|---------------------------------|---|
| people of all abilities and includes seating and public toilets | | | Kyneton Urban Design Framework) | Council planning for the built environment incorporates seating, public toilets and other features important for older people |
|---|--|--|---------------------------------|---|

Priority Action Area 4: Being respected and valued by the community

| <i>ACTION</i> | <i>LEAD AREA</i> | <i>PARTNERS</i> | <i>IMPLEMENT THROUGH</i> | <i>INDICATORS AND MEASURES</i> |
|--|--------------------------------------|--------------------------------------|--|---|
| STRATEGY 4.1: Deliver opportunities for older people to contribute to community decision-making processes | | | | |
| Inform, enable and encourage older residents to 'Have Your Say' on Council-related activities | Communications and Engagement | <i>Community Wellbeing</i> | Promote <i>Have Your Say</i> mechanism and individual campaigns through media and networks that are known to be used by older people Offer accessible alternatives to online response on <i>Have Your Say</i> | Increased <i>Have Your Say</i> responses from older citizens, either standard online or through accessible alternative input mechanisms Council's engagement planning is inclusive of older people |
| STRATEGY 4.2: Inform older people about Council decisions that affect them | | | | |
| Communicate and share information in a range of ways/methods to cater to the diverse needs of the community e.g. newsletters, information and education sessions | Communications and Engagement | <i>Community Wellbeing</i> | Disseminate targeted, timely, accessible information on relevant Council decisions through the media and networks known to reach older people Ensure availability of contact mechanisms for older people to follow up their questions or views on Council decisions | Improved 2024 Local Government Community Satisfaction Survey score for Informing the Community for people aged 65 years and over Input, queries and feedback by older people |
| STRATEGY 4.3: Promote older people's rights and reduce risks to their safety | | | | |
| Reduce elder abuse by raising awareness of older people's rights and how risks of abuse can be addressed | Community Wellbeing | <i>Communications and Engagement</i> | Disseminate information through Council media and networks about older people's rights and addressing risks of abuse | Quality, targeted information disseminated |
| Promote personal safeguards against fraud/scams | Community Wellbeing | <i>Communications and Engagement</i> | Village Connect fraud/ scams awareness session | Awareness sessions delivered |

| | | | | |
|---|----------------------------|--------------------------------|---|--|
| | | | Disseminate information through Council media and networks about fraud and scams | Quality, targeted information disseminated |
| STRATEGY 4.4: Recognise and celebrate age friendly aspects of the local community | | | | |
| Explore initiatives to recognise local businesses, groups, organisations and services that celebrate ageing and/or adopted positive ageing practices and strategies to support older people | Community Wellbeing | <i>Community Strengthening</i> | Seek and support at least one nomination each year from the community for the Victorian Government Age-Friendly Victoria Award Seek to include recognition of positive ageing practices in Council's business awards and events and Festivals Grants process | Nomination sought and entered Discussions held to include positive ageing practices in business awards and festival grants process |
| STRATEGY 4.5: Deliver initiatives to address ageism and promote age-friendly practices | | | | |
| Council continues to lead in promoting and demonstrating age-friendly practice in Macedon Ranges | Community Wellbeing | | Implement agreed actions for PARTICIPATE 2020-2025 Year 4 (2023-24) Monitor and report Develop PARTICIPATE 2020-25 Year 5 (2024-25) | Annual work plan completed and annual actions implemented, monitored and reported Council approves and endorses commitment to drafting plan beyond 2025 |
| Deliver on annual requirements of membership to the World Health Organisation's Global Network of Age Friendly Communities Network and the Age Friendly Victoria Declaration | Community Wellbeing | | Council supports the maintenance of Macedon Ranges Shire membership of the Global Network | Macedon Ranges Shire membership of the Global Network continuing and meets membership requirements |

| | | | | |
|---|--------------------------------------|----------------------------|---|---|
| Support and promote age-friendly community initiatives, to address inclusion and promote respect of older people | Community Wellbeing | | Seek and support at least one community nomination each year for the Victorian Government Age-Friendly Victoria Award | Nomination made and supported |
| Ensure that the contributions of older people to the community are appropriately recognised | Community Wellbeing | | Consult older people and relevant Council departments on positive and meaningful ways to recognise contributions of older citizens. Identify option for 2024 | Plan in place for 2024 recognition of contribution of older people |
| Ensure that the diversity of older people is accurately portrayed and reflected in Council publications and materials | Communications and Engagement | <i>Community Wellbeing</i> | Build on diversity of Council photo library Use diverse and local images of older people across Council publications | Council photo library provides a selection of appropriate diverse images of older people Diverse and local images of older people are used across council publications |



PARTICIPATE Positive Ageing Plan – Year 3 Annual Review 2022-23 and Year 4 Action Plan 2023-24
Page 37



Macedon Ranges Shire Skate and BMX Strategy

November 2023

Revised Draft for Council Review

PLA'CE



Contents

| | |
|---|--------------|
| 1. Introduction | 2 |
| 2. Executive Summary | 3-4 |
| 3. Creating the Model | 5-8 |
| 4. Strategic Approach | 9 |
| 5. Confirming Demand & Population Statistics | 10 |
| 6. Community Engagement & Discussion | 11-14 |
| 7. Existing Facility Reviews | 15-26 |
| 8. Facility Comparison & Choosing the Model | 27-28 |
| 9. Choosing Locations | 29 |
| 10. Site Assessment Table | 30 |
| 11. Implementation Plan | 31-33 |
| 12. Implementation Strategy | 34-46 |

1. Introduction

Introduction

This Skate and BMX Facility Framework is a summary report that looks at existing and future strategic provision of skate and BMX facilities in Macedon Ranges Shire Council from 2024 through to 2040. Specifically, it focuses on a new best practice models of skate facility provision to ensure the Shire has the most appropriate facilities for skate and BMX park users to enjoy over the next 15 years.

Importantly the strategy focuses on the provision of facilities that best meets the unique demographic and physical distribution of population of the Shire which is made up of a range of large towns across a large distance. The resultant implementation plan calls for an equitable distribution of new facilities to replace aging facilities and complement high quality existing facilities so that everyone who skates or rides in the Shire has appropriate opportunities to enjoy their chosen pursuit across the municipality over the next 15 years.

Process

To prepare this strategy the following has been undertaken and makes up the body of this report.

- Discussion on the changing face of skate and BMX participation, review of improvements of construction of skateparks and definition of the range of different types of BMX and skateboarding and the types of facilities required to cater for these various needs.
- Demographics analysis of ABS data, specifically looking at growth and distribution of 5 to 17 year olds over the next 15 years across the municipality.
- Review of current models of skatepark provision across Australia to determine what are the current best practice trends to assist in determining the best model for Macedon Ranges.
- Assessment of all of Macedon Ranges existing skateparks and BMX tracks to determine what is currently provided and what gaps or issues there are.
- Review of the broad scale demand participation rates and trends of BMX, scooter and skate use to assess current and future demand, and the likely impact on facilities in Macedon Ranges.
- Benchmarking with other similar councils to see where Macedon Ranges is in comparison with other regional councils with regard to existing skatepark provision.
- Review of consultation undertaken with the local community regarding existing skatepark use and what future opportunities are most sought after.
- Definition of the best model of skatepark provision for Macedon Ranges.
- Determination of the potential best new sites for skate and BMX facilities by assessing a series of possible sites using site selection criteria.
- Outline of key recommendations and next steps to ensure a way forward with skate facility provision including showing possible design solutions at preferred sites.

2. Executive summary

Introduction

The following is a summary of strategic work undertaken by Playce Pty Ltd for Macedon Ranges Shire Council between November 2022 and May 2023 regarding current and future skate and BMX facility provision.

A new model

The model of skatepark provision changes significantly between Councils given significant differences in public transport and access, the distribution of population and the clustering of like services and facilities.

Whilst a traditional regional facility model works in Metropolitan, Country Centres and Suburban Areas, a municipality such as Macedon Ranges should consider a different model due to the distance between higher populated townships, creating access issues for younger cohorts. Both Bass Coast and Mornington Peninsula Shire have looked at a number of district facilities across their townships to service each small population cluster rather than a single centralised facility.

For Macedon Ranges Shire, there is around 15-20min drive between each township and given the limited public transport between towns, it is difficult to expect young people to be able to regularly access a single larger facility in one town over others. Therefore a facility in each town is the most equitable approach. The actual scale of these facilities then should respond to the current and estimated future population of each town. As such larger and growing towns would require a larger facility to accommodate greater use accordingly.

Demographics

There will be significant population increases in towns throughout the Shire, particularly Gisborne, Kyneton, Romsey, Riddells Creek and Lancefield. The existing facilities in these towns vary in condition and scale, and these growth areas are key to focus on for future skatepark and BMX provision.

Existing Provision

All of Macedon Ranges existing skateparks and BMX facilities were assessed and are in varied condition. Lancefield has a large new facility, however other larger towns such as Kyneton and Romsey have smaller, older parks that are reaching the end of their life span and require replacement. Many of the BMX facilities have also fallen into disrepair, becoming overgrown and potentially hazardous to use.

Broad Scale Demand

The ABS Children's Participation in Selected Physical Recreation Activities report 2012 data shows the participation of both bike riding and skate wheeled sports (skateboarding, scootering and rollerblading) across Australia are significantly higher when assessed against popular organised sports for both boys and girls. This confirms the broader growing popularity of these activities including both skateboarding and BMX racing being Olympic sports.

Benchmarking with other similar councils

Six other similar municipalities were benchmarked against Macedon Ranges regarding skate provision. Macedon Ranges, when compared against all of the other municipalities, actually has one of the highest provisions of skateparks per capita compared to other councils sampled, however many of the existing facilities have significant issues that require action moving forward to ensure Macedon Ranges has high quality facilities to cater for current and future demand.

Consultation outcomes

Consultation was undertaken through an online survey, skatepark drop-in sessions, and school consultations, with over 200 people engaging in the consultation process. Participants were asked questions about the existing facility provision, and what skate elements and amenities they would like to see in future facilities. Lancefield Skatepark was popular, showing the appreciation and need for up to date facilities. For skate provision, transition elements, and pump tracks were the highest voted elements, with drinking fountains, toilets, shade and social spaces also proving popular with survey participants.

Suggested Macedon Ranges Model

It is recommended that developing skate and BMX facilities in townships throughout the shire is adopted for Macedon Ranges, with facility sizes ranging from local / spot size facilities (up to approx. 600m²), to district size facilities (up to approx. 1500m²) depending on the size and expected population growth of the township over the next 15+ years.

Additional active elements, such as pump tracks, ball courts, and parkour could be considered in some locations to complement the skate activity, and create active spaces for a wider range of users.

Given the popularity of mountain bike trails in Macedon Ranges Shire, Playce suggest that Council should advocate with land managers (Parks Victoria and DECCA) where mountain biking currently occurs for provision of this sport.

Executive summary (continued)

Locations

Alternate sites were assessed for the re-development of some of the skate and BMX facilities in the shire. Many of the existing locations were deemed suitable, with opportunities for expanding facilities, and further integrating them into the sites. A new location is suggested for Gisborne Skatepark along Robertson Street, with good space, surveillance opportunities, and a potential link to the nearby playspace in Jacksons Creek Reserve.

Recommendations

Short Term: 2024 - 2029

- Detail design, documentation, and construction of local level skatepark in Romsey, as developed by Baseplate.
- Site feasibility study for district level skatepark / active recreation space in Gisborne.
- Consultation, detail design, documentation, and construction of district level skatepark / active recreation space in Kyneton.
- Consultation, detail design, and documentation for local level skatepark in Riddells Creek.
- Consultation, detail design, and documentation for local level skatepark in Woodend.

Medium Term: 2030 - 2035

- Construction of local level skatepark in Riddells Creek.
- Construction of local level skatepark in Woodend.
- Consultation, detail design, documentation, and construction of district level skatepark / active recreation space in Gisborne.
- Consultation, detail design, documentation, and construction of local level pump track in New Gisborne.

Long Term: 2036 - 2040

- Consultation, detail design, documentation, and construction of district level BMX track in Kyneton.
- Consultation, detail design, documentation, and construction of local level pump track in Lancefield.

- Consultation, detail design, documentation, and construction of spot / local levels skate facility in Macedon.

Additional Facility Considerations

- Council to advocate with land managers (Parks Victoria and DECCA) where mountain biking currently occurs for provision of this sport.
- Consider development of skate spots as part of housing developments in the Shire. Smaller, more informal skate elements to complement or integrate in to other active spaces.

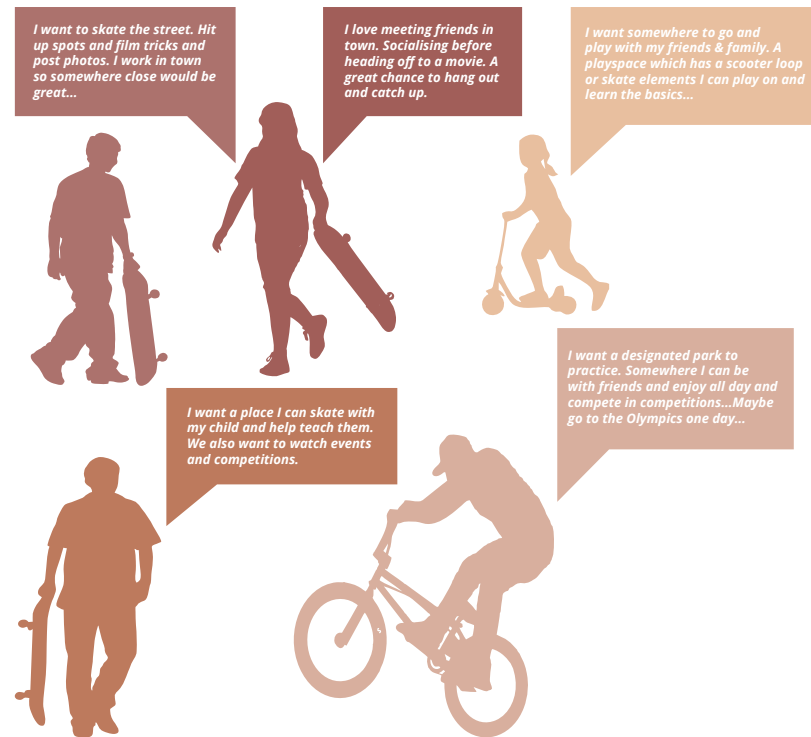


A range of users and a range of needs

When discussing skateboarding and BMX facility provision, it is important to acknowledge that there is no single model that meets everyone's needs. People ride and skate for different reasons, using different terrain and at different levels of expertise.

For some it's a form of transport, to others they have a passion for transition and bowls. For others again it is being able to skate at appropriate urban spaces in the street while others want to train for competition such as the Olympics. For younger children, skate and scootering may form part of a broader play experience.

The sports themselves are continually evolving as are the spaces that are used to accommodate them. Some skate spaces remain relevant forever whilst others are cutting edge and fun but remain relevant for only a short time.



PLA'CE Macedon Ranges Shire Skate and BMX Strategy

Design and construction improvements

One of the big issues with skatepark provision is that there is a perception of set and forget. It appears that due to the nature of skateparks being constructed out of concrete that they need little maintenance and should remain relevant for 15+ years. Due to the relative young age of the skatepark design and construction industry, the methods of construction and quality of design however continues to evolve and improve. Today's new parks are generally designed and built to a much higher quality.

Therefore, some facilities considered high quality 10 years ago could now be considered antiquated or in poor condition. This is important as many Councils have existing skateparks that are now aging and either are in poor condition or no longer meeting current functional trends. Councils though in many instances may not be aware of these issues due to the informal use of these facilities (no structured clubs or onsite management providing feedback). Skaters and BMX riders will still use a facility even if it is in poor condition or have design issues, simply because there are no alternatives.

Outwardly skateparks are then being assessed as still usable and in good condition but this is not always the actual case and users are coping with these condition and functional issues, rather than enjoying high quality skate spaces that meet current best practice standards. Therefore existing skateparks need to be assessed by professionally qualified specialist skatepark design experts against current best practice in design and construction so Councils are aware of the condition, function and long term viability of their skateparks moving forward.

Any new model needs to consider that all skateparks require ongoing maintenance and regular repairs and in some instances over time, full replacement. Councils as part of any new skatepark project should include the need to provide an asset management plan with defined maintenance standards, and plans for their long term replacement at the end of their lifespan.



p. 5

Creating a model that meets everyone’s needs

It is important to look at the various users and determine a model that best caters appropriately for as many users as possible. Importantly the model needs to be flexible and diverse like the users that engage in these pursuits. Unlike many sporting pursuits, where there are set court dimensions and rules, skateboarding, scootering and freestyle BMX, have no specific set facility type; it is rather the difference in spaces that provides the diversity and interest in use.

There are also so many different types of activity that one single space or model simply does not cater appropriately for everyone’s needs. Street skaters in particular, rarely use skateparks, preferring to find spots in the urban realm to hit up and enjoy. Bowl skaters however will organize road trips and travel 100s of kilometres just to session a new bowl. Vert skaters and riders require large steep ramps to undertake their chosen pursuit, whilst BMX freestyle riders seek out box jumps, spines and other big transition areas in purpose built concrete or dirt parks. It is therefore critical to start to understand the various styles of skateboarding, scootering and BMX and these are summarized on the following pages.

Transition skateboarding / riding

Transition skateboarding is essentially riding curved bowls and pools or part thereof. Generally the transition or curved surfaces are usually bowls which are essentially a re-creation of the empty pools utilized in California in the 1970s.

Popular over the world, these facilities can come in all shapes and sizes, and include single bowls, snake runs & combination bowls. Generally each bowl is unique and riders will travel to enjoy the unique character of each bowl, particularly those more complex or deep. Whilst usable and enjoyed by both skateboarders and BMX, bowls can be designed to provide greater value for either group such as including spines, street spines etc for greater BMX use.



PLACE Macedon Ranges Shire Skate and BMX Strategy

‘Park and street’ skateboarding / riding

Often confused with plaza skating, park and street style skateboarding is utilising contrived elements that were created to replicate urban elements utilized in the street by riders and skateboarders. Mainly to give these users a safe place to skate, they were first created in the late 1990s and are still popular today. Elements created over this time have now become standard features found in many skateparks.

With park style facilities, there are elements such as fun boxes, ledges, spines, banks, quarter pipes, jump boxes and hips. With street style facilities there are elements that are more street focused elements such as rails and ledges and stairs. Olympic skateboarding events are held on both on a park and street style courses.



p. 6

Vert skateboarding / riding

Vert skateboarding and BMX is all about using large ramps (generally 3m+ in height with at least 30cm vertical face at tops of ramp) for doing vertical tricks. Popular in the 2000s and a mainstay for events such as X Games, the broader interest and number of ramps appears to be waning however there are still many vert skaters across the world enjoying these facilities. They are mainly constructed from steel with steel/composite (skatelite) riding surface.



Plaza skateboarding / riding

The final main form of skateboarding and riding is called plaza or street. This is generally simply utilising the existing street and finding spots or elements to skate or ride. Generally urban spots such as an open plaza, set of stairs or seating are favored spaces. As there has been significant angst by the broader community with skaters utilising spots that impact on others, plaza and street spots are now being created in urban centres around the world that allow skate to occur freely. Importantly these spaces use urban materials and layouts and generally do not include park style elements that are contained at skateparks.



PLA'CE Macedon Ranges Shire Skate and BMX Strategy

Scooter loops

Scooter loops are low level flowing tracks, with rolled "pump bump" features, and banked corner "berms", designed for younger wheeled sports users. The rollers and berms help the users regulate their speed around the track, and learning to "pump" the smaller elements prepares users for riding larger tracks. The tracks will generally be a simple loop, with minimal options for gaps / transfers. Scooter loops are often integrated into playspaces, due to their low level and accessibility for a range of users. The tracks are usually concrete or asphalt to provide a smooth surface for smaller wheels, and can be ridden by scooters, skateboards, and bikes of all sizes.



BMX tracks

BMX Tracks are generally large, dedicated facilities with start ramps, gravel / dirt jumps / rollers, and larger asphalt berms. These facilities are suitable for BMX's and bikes with larger wheels, as the tracks are generally unsealed.



Pump tracks

Pump tracks have many similar elements to scooter loops, however are larger, and can be ridden at greater speeds by more experienced riders. The tracks may have the opportunity to be ridden in different configurations, with lines that cross over, or transfers between berms / rollers. This can make the tracks more interesting to ride for more experienced users, whilst still being accessible for learners.

The nature of pump tracks encourages users to “pump” to generate speed, so users can go at their own pace, building up technique to go faster. Pump Tracks are often “raceable”, with users undertaking time-trial style races against each other. The surfacing of pump tracks is usually asphalt or concrete to maximise the number of users, from skateboards to mountain bikes.



PLACE Macedon Ranges Shire Skate and BMX Strategy

Skateboarding at the Olympics

Skateboarding made its Olympic debut at the Tokyo games in 2021. There was a ‘street’ competition for males and females which is based on competitors using a street/plaza course with obstacles found in most skateparks, such as rails, ledges, hubbas, stairs etc. There was also a ‘park’ competition for male and females with a focus on transition skateboarding including large open bowls, hips and curved transitions.

Skateboarding is confirmed for the next Olympics in Paris, with qualifying events already taking place. Given the unstructured nature of skateboarding and its cultural resistance to organized competitions, actually being part of the Olympics at this time signifies an important step in its evolution as a sport.

Many skateboarders enjoy skateboarding more as a recreation pursuit and being with friends and don't see it as a sport. This will always be a critical part of the culture and history of skateboarding and should always be promoted and fostered when considering places and spaces for skate activity. There is however now also a pathway to high level competition for those that want to pursue this more specific sporting side of skateboarding.

Skateparks, whilst providing for that informal recreation enjoyment are now therefore potentially also a venue to practice and train in readiness for major events such as the Olympics. Councils and other providers of public recreation and sporting spaces need to acknowledge that the provision of new skate facilities need to be of a high standard and consider these competition requirements, much like more traditional sports.

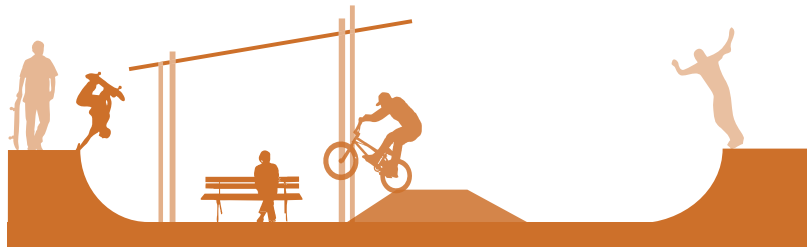


p. 8

4. Strategic Approach

As outlined previously, people skate and ride for so many different reasons and the traditional hierarchical skatepark model has created some significant issues. To overcome this and provide direction for the successful future of skatepark provision, the following new approach is suggested that focuses on two key options.

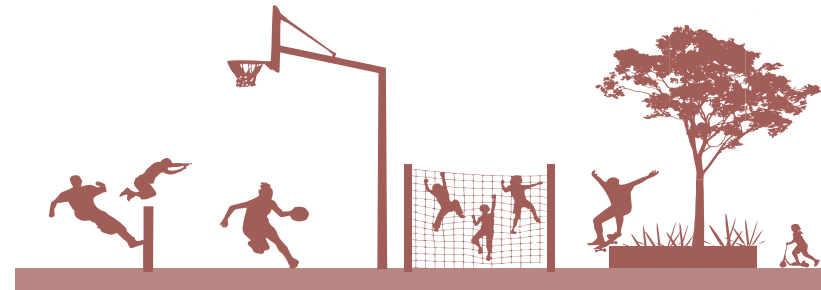
Skate Specific



Designated single purpose facility to allow for all designated skate/BMX and scooter requirements.

- Sporting facility focus on larger regional spaces in central locations that can be complemented with the multipurpose and skateable spaces.
- Contrived skate elements such as transition, bowls, street and park style components.
- May also include some plaza and vert options.
- Designed for those interested in using a space for a longer time to practice and socialise.
- Opportunities for those wanting to train for Olympics and participate and watch events and competitions.
- Caters for all ages including young children learning as well as older skaters and riders.
- Truly intergenerational as given skateparks first rose to prominence in the 1980s, there are now generations of skaters and riders that still participate.
- Provides central open major facility to allow progression of all sports from beginner to advanced. Allows for high end training, participating in events and competitions. Is large, open and can be activated regularly.
- Becomes the central major skatepark for entire communities and a destination sporting facility for both locals and visitors accordingly.
- Needs to be in a central easily accessible location. Whilst an urban space is an option, it can easily be accommodated in parkland context. Space needs to be large enough to cater for facility and associated ancillary requirements such as parking, toilets etc...

Multipurpose



Multipurpose space to allow for a range of recreation and play activities to occur including skate/BMX.

- Skate component could be quite small (200-300 sq.m) as part of larger space.
- Skate elements form part of larger recreation hub. Could include scooter loop, ledges & rails or mini ramp element.
- Caters for beginner skaters, scooterers and riders. More of family experience as part of broader play experience for tweens and younger children. Also local residents that want to have short stay skate opportunity without traveling large distances to go to district facility.
- Caters for all ages of residents who live locally but focuses more on young children and their families, older tweens and young adults as part of a larger recreation/play precinct.
- Allows for localised skate provision at a small scale for local residents and younger children without need to travel to large facility.
- Essentially provides tween play to complement other recreation and play options such as ball courts, parkour or fitness. Allows for teens and young adults living in suburbs to also enjoy skate informally as part of larger precinct.
- Needs to be aligned with other play and recreation spaces such as a playground and/or ball courts in a public neighbourhood park or space.
- Can be urban but important that it is close to residential areas for ease of access and use.

5. Confirming Demand

Introduction

Given that skateboarding, BMX and scootering are undertaken by most participants as informal unstructured recreation, it is difficult to quantify participation unlike organised sports which have clubs and members to determine use and popularity. In recognition of this the ABS undertakes a three yearly survey/research that includes data on children's participation in bike riding, skateboarding, rollerblading and scootering. This information is invaluable as it highlights the significant popularity of these activities, particularly compared against traditional popular organised sports and activities. This is summarised in the table below.

Participation comparison

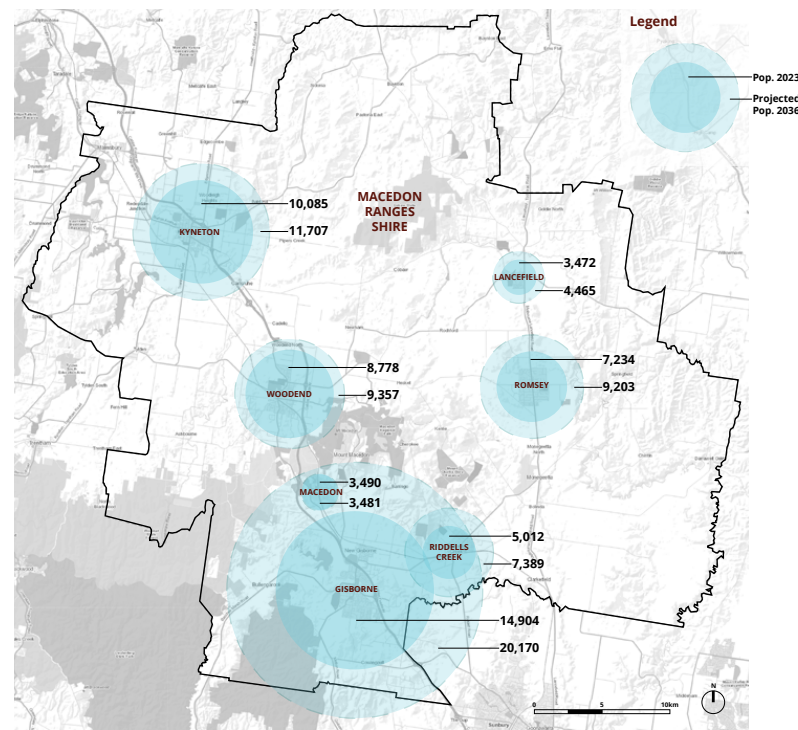
The following table shows how significant the popularity of both bike riding and skate wheeled sports (skateboarding, scootering and rollerblading) are across Australia when compared to the most popular organised sports for both boys (soccer, swimming and AFL) and girls (dancing, swimming, netball). Importantly these figures pick up all bike riding and do not distinguish BMX from other bike usage. The figure for the skate wheeled sports is also general and does not break numbers down into detail for each sport. Given the current popularity with young children for scooters for informal play and transport, this will no doubt have contributed to the high participation data.

Given that the numbers for both bike riding and skate wheeled sports have grown, they represent a significant level that needs acknowledgment when considering both current and future provision of skate and BMX spaces for Macedon Ranges. As a minimum based on these numbers, provision for spaces to participate should be a priority for the Council to ensure this existing and steady demand is catered for appropriately.

| | 2006 | | 2009 | | 2012 | |
|--|-------------|----------------------|-------------|----------------------|-------------|----------------------|
| | number '000 | participation rate % | number '000 | participation rate % | number '000 | participation rate % |
| MALES | | | | | | |
| Bike riding | 1003 | 73.4 | 922.5 | 66.1 | 999.8 | 69.9 |
| Skateboarding or rollerblading or scootering | .. | .. | 780.4 | 55.9 | 857.8 | 60 |
| Soccer (outdoor) | 268.5 | 19.6 | 277.8 | 19.9 | 309.7 | 21.7 |
| Swimming/Diving | 225.7 | 16.5 | 240.1 | 17.2 | 235.2 | 16.5 |
| Australian Rules football | 188.5 | 13.8 | 223.7 | 16 | 212.7 | 14.9 |
| FEMALES | | | | | | |
| Bike riding | 803.2 | 61.9 | 721.1 | 54.4 | 770.6 | 56.8 |
| Skateboarding or rollerblading or scootering | .. | .. | 562.2 | 42.4 | 640 | 47.2 |
| Dancing | 300.1 | 23.1 | 348.5 | 26.3 | 367.4 | 27.1 |
| Swimming/Diving | 236.8 | 18.2 | 262.8 | 19.8 | 256.9 | 18.9 |
| Netball | 224.1 | 17.3 | 225 | 17 | 220.4 | 16.2 |

Table: Children's Participation in Selected Physical Recreation Activities compared with top three organised sports, by sex - 2006, 2009 and 2012 (ABS 2012)

Map of projected population growth



| Area | Population 2023 | Projected Population 2036 | % Increase |
|-----------------------------|-----------------|---------------------------|---------------|
| Gisborne | 14,904 | 20,170 | 35.33% |
| Kyneton | 10,085 | 11,707 | 16.09% |
| Woodend | 8,778 | 9,357 | 6.59% |
| Romsey | 7,234 | 9,203 | 27.22% |
| Riddells Creek | 5,012 | 7,389 | 47.42% |
| Macedon / Mount Macedon | 3,490 | 3,481 | -0.25% |
| Lancefield | 3,472 | 4,465 | 28.61% |
| Macedon Ranges Shire | 52,975 | 65,771 | 24.16% |

6. Community Engagement

Assessment Criteria

The following pages outline the result of the consultation undertaken for the Macedon Ranges Skate & BMX Strategy. Working with the Macedon Ranges Shire Council, Playce conducted face-to-face consultations and an online survey to gather feedback and comments from the community.

It is very important to understand what people like and dislike, what issues and challenges they face, and also collect stories and valuable local knowledge from the residents. The results from these consultations will be used as the foundation for developing the strategy for skate and BMX facilities in Macedon Ranges Shire.

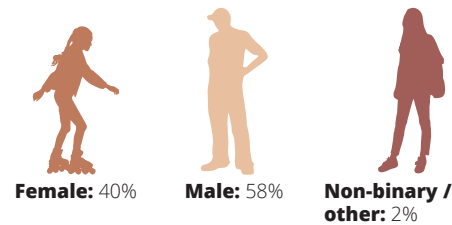
A unique opportunity exists within the region. There are several skateparks that need upgrading which allows for a varied terrain offering for the community. As the survey highlights, there is a diverse range of user groups. There is a varied opinion of things they would like to be considered in the proposed facilities. The aim will be to ensure the communities wants and expectations are met across the proposed new spaces

Consultation Sessions

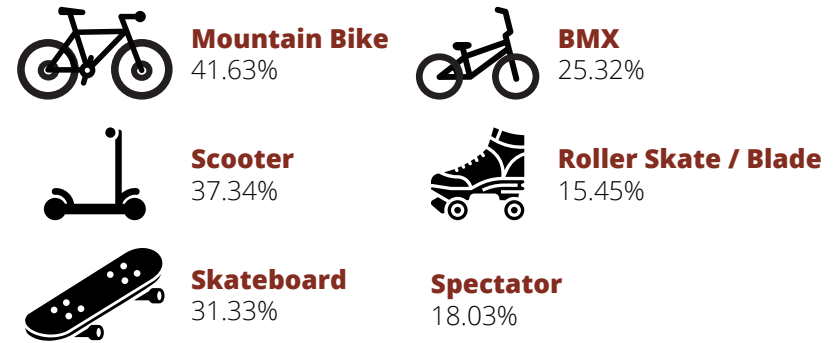
- 3** Skatepark Consultations
- 2** School Consultations
- 248** Online Surveys Completed

Results

Who are we?

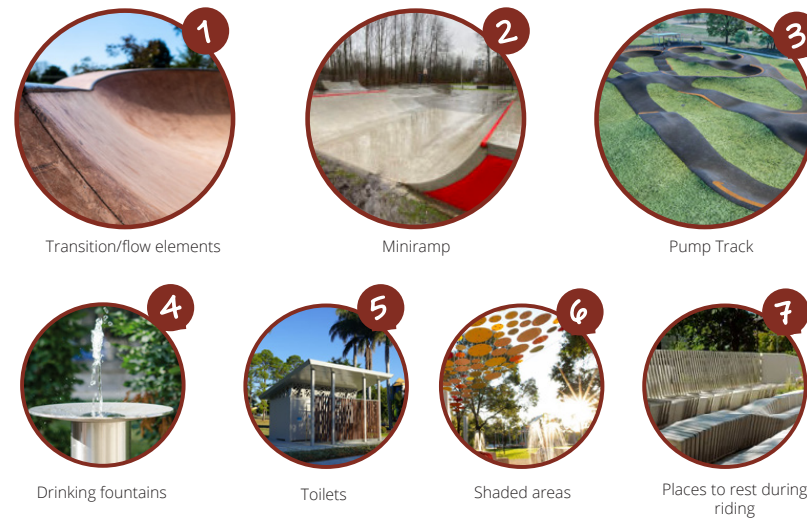


What we do?



Overview of feedback in order of importance

Survey respondents were asked to rate the desirability of different components for the future development of wheeled sports facilities, the most important items are listed below:



Community Engagement Summary

From the face-to-face community consultations and 4 weeks of the online survey, there were more than 200 participants engaged in the consultation process. Ideas and thoughts were collected from the community and a number of key needs and wants were identified. The following consultations were held:

- Wednesday 15th March - Drop-in Session at Romsey Skatepark
- Saturday 18th March - Drop-in Session at Kyneton Skatepark
- Wednesday 22nd March - Drop-in Session at Woodend Skatepark
- Thursday 30th March - School Consultation Session at Braemar College
- Thursday 30th March - School Consultation at Gisborne Secondary College
- Thursday 2nd March - Thursday 30th March - Online Survey

There was a large range of ages and user groups as per the data and community members were passionate and engaged. The gender split of 40% female to 58% male (2% were non-binary or other). The majority of participants were local to Macedon Ranges.

Most of the participants visit the various skateparks and BMX tracks on a weekly or monthly basis. Lancefield was the most popular skatepark with 55% of those surveyed rated it as fantastic. Locality was a strong factor for usage with Woodend and Lancefield being equally used despite 45% of those surveyed rating Woodend as poor.

Overall, there was strong interest across the board in upgrading the skate and BMX facilities in the Macedon Ranges and ensuring more social and active play spaces with shade and amenities.

Within the skate and BMX section, most voted elements are:

- Transition and flow elements
- Mini ramp
- Pump track

Other facilities important to the community are:

- Drinking fountains
- Toilets
- Shaded areas
- Places to rest and hang out in between riding

We have heard throughout the consultations that intermediate and beginner areas are important, and there is a need for pump tracks.

Ensuring that the spaces are welcoming, have visibility and safety and cater to a range of skill levels is also important. Safety concerns from users and parents regarding Romsey skatepark were raised by several consultation participants.

The Kyneton skatepark was raised as a safety concern as the metal ramps become hot and are not meeting flush with the concrete surface, causing a hazard.

Lancefield was universally liked and mentioned as a potential design direction. In the skatepark section, the most preferred style among participants is a transition and flow style park, suitable for beginner and intermediate riders. The direction was for a combination of street and transition elements that flow and link up.

Overall, it is a great outcome. The community embraced some ideas, and see it as an opportunity for a space that can be enjoyed by all residents of the Macedon Ranges.

There were leading trends for the upgrade of pump tracks, the upgrade of skateparks, and inclusion of social and active play; there was also a strong emphasis on a space with shade structures, providing outdoor social and hangout spaces.



Lighting

45% of survey respondents rated lighting as very important. This was not one of the top 7 highest rated components for inclusion in the future development of facilities in the shire, however, lighting is a key consideration for skatepark provision.

The inclusion of sports level lighting will increase a skateparks usable hours, especially during Autumn / Winter months when the sun sets earlier. This is particularly important for older skatepark users who are restricted to using the facilities after work hours.

Lighting can also help reduce risk, as some users will attempt to ride un-lit skateparks in low light, which can be dangerous.

Due to the relatively high fixed cost of lighting, it is not always included, especially in smaller skateparks where the cost of lighting is proportionally high in comparison to the skatepark footprint and cost. When given the choice, skatepark users often prefer the installation of a larger skatepark initially, with the potential for adding lighting as a second phase.

With this in mind, lighting would generally be included in the development of larger scale facilities, district level and above, with the opportunity to add lighting to smaller facilities as a second phase after monitoring use / requests from users.

The strategy suggests lighting two of the skate facilities, Gisborne and Kyneton. These are the proposed district level facilities, and the town's locations provide access to a lit facility for users from the south and north of the Shire.



PLACE Macedon Ranges Shire Skate and BMX Strategy

Mountain Bike Trails

42% of survey respondents ride mountain bikes, and 45% rated mountain bike trails as very important for inclusion in the development of wheeled sports facilities in Macedon Ranges Shire.

The development of mountain bike trails is quite different from other wheeled sports facilities such as skateparks and pump tracks, as there is a requirement for specific terrain, and the scale of the facilities can be very large.

Due to the popularity of mountain bike trails in the Macedon Ranges Shire, there should be consideration for development of these facilities. Due to the land required, Council should advocate with land managers (Parks Victoria and DECCA) where mountain biking currently occurs for provision of this sport.



p. 13

Pop-Up Skateparks

Pop-up skate facilities are generally comprised of portable steel or skatelite ramps and obstacles, that can be set-out on an existing asphalt or concrete slab. These facilities can be set-up for local community events, or provide a temporary skatepark in towns that do not have a dedicated facility.

The features of pop-up skateparks are generally smaller, modular obstacles, allowing them to be transported easily. This can limit the function of the obstacles, catering for less experienced riders, and not providing the range of obstacles and opportunity for progression desired by more experienced users.

Requirement for storage, transport, and supervision are also considerations for pop-up skateparks. A list of pros and cons for pop-up skate facilities are as follows:

Pros:

- Provides temporary skate solution, that can be used to gauge interest and potential for development of dedicated skate facility in a town.
- Opportunity to change obstacle layout and location, can be adjusted to suit space available to set-up.
- Can be quickly set-up and relocated for community events, suitable for location alongside food trucks, markets, and other activities.
- Can help engage conversation / potential to dispel concerns around skate facilities being installed in a town.

Cons:

- Generally smaller / linear obstacles with limited opportunity for progression.
- Requirement for existing open asphalt or concrete slab area to set-up. May affect use of existing infrastructure (car park etc)
- Requirement for storage of ramps when not in use, and transport for relocation.
- Less durable than a concrete skatepark and require more frequent maintenance.
- Require set-up / management by Council team or contractor.
- Temporary, do not provide a dedicated skate facility for a town.

Whilst it is not recommended that pop-up skateparks are considered as a long term solution for skatepark provision, if there is infrastructure in place to facilitate these pop-up facilities they could be considered for smaller townships that do not have the population to service a permanent facility, or as a temporary option, and way to gauge interest for a skatepark in a town prior to the installation of a dedicated skate facility.



7. Existing Skate Facility Reviews

Introduction

Representatives from Playce visited the 10 existing skate facilities in Macedon Ranges Shire in November 2022.

Assessments of the skate facilities have been rated using three criteria; Condition, Function and Amenities. These criteria are then combined to give an overall ranking of each facility. The function and condition of a facility are closely linked, if the condition of a facility is poor, then the function is impacted. Alternatively, a facility can be in great condition, but the flow, layout and arrangement of obstacles can be poor and unsuitable for the user's needs.

Skate Facility Rating System

Condition

E (1) – Excellent – This park is a recently built facility with high quality finishes and is showing no real signs of wear and tear. It should have a life span of approximately 20 years if maintained regularly.

G (2) – Good – The facility is likely a few years old and is starting to show some wear, however with regular maintenance and minor repairs it is expected to have a lifespan of at least 15 years.

F (3) – Fair – This is generally an older facility (8-10+ years) that is showing its age or a newer park that wasn't built to current best practice standards. It has visible issues with surfaces and other elements. It should still have a lifespan of 10 years although repairs and maintenance should be a priority. Funding consideration should be made for replacement/ major repairs.

P (4) – Poor – Once again, these are primarily older facilities (15+ years) or are new parks that are not built to current best practice standards and are deteriorating quickly. These parks are showing significant issues with their condition and have an expected lifespan of 5 years or less. Whilst repairs will provide some assistance to the longevity to the park, many issues are widespread. These parks should have regular maintenance to ensure risks are minimized and a plan should be in place to look at major repairs or full replacement.

H (5) – Hazard – Facility is unsafe due to structural failure, poor design or extreme surface degradation and requires immediate action or closure.

Function

E (1) – Excellent – Layout and variety of obstacles suitable for intended use.

G (2) – Good – Layout and variety of obstacles generally suitable, however adjustments/improvements could be made.

F (3) – Fair – Layout and variety of obstacles adequate, however improvements are necessary.

P (4) – Poor – General issues with layout and variety of obstacles, major improvements required.

H (5) – Hazard – Obstacles dangerous or arranged in unsafe layout that could result in injury.

Amenities

Amenities are also rated from Excellent to Hazard, based on the inclusion of bins, seating, shade, drinking fountains etc... and the suitability of their location in relation to the skate facility.

Assessment Criteria

The overall facility rating system used for each site was as follows:

E (1) – Excellent – A recently built facility with high quality finishes showing no real signs of wear and tear. It should have a lifespan of approximately 20 years if maintained regularly. The layout of the facility, variety of obstacles and amenities are suitable for intended use.

G (2) – Good – The facility is likely a few years old and is starting to show some wear, however with regular maintenance and minor repairs it is expected to have a lifespan of at least 15 years. Layout and variety of obstacles and amenities generally suitable, however adjustments/improvements could be made.

F (3) – Fair – This is generally an older facility (8-10+ years) that is showing its age or a newer park that wasn't built to current best practice standards. It has visible issues with surfaces and other elements. It should still have a lifespan of 10 years although repairs and maintenance should be a priority. Funding consideration should be made for replacement/ major repairs. Layout and variety of obstacles and amenities adequate, however improvements are necessary.

P (4) – Poor – Primarily older facilities (15+ years) or newer parks that are not built to current best practice standards and are deteriorating quickly. These parks are showing significant issues with their condition and have an expected lifespan of 5 years or less. Whilst repairs will provide some assistance to the longevity to the park, many issues are widespread. These parks should have regular maintenance to ensure risks are minimized and a plan should be in place to look at major repairs or full replacement. General issues with layout and variety of obstacles and amenities, major improvements required.

H (5) – Hazard – Facility is unsafe due to structural failure, poor design or extreme surface degradation and requires immediate action or closure. Obstacles and amenities are dangerous or arranged in unsafe layout that could result in injury.

Individual reviews of each facility have been completed, and a facility assessment table outlining further information and amenities for the sites has also been generated.

Existing Skate Facility Reviews

Facility Hierarchy

A hierarchy rating for each facility has been included in the facility assessment table based on the following definitions:

Spot (Generally under 200m²)

Primary catchment area usually within walking distance of most users. Spot facility locations are not considered suitable for larger facilities as they are generally provided in residential settings and have limited or constrained function for multiple activities and events. These sites provide for active recreation opportunities. Generally single focus (street elements, ramp), as part of broader recreation precinct. Focus on intermediate/beginner but still usable by more advanced users.

Local (Approx. 200-600m²)

Primary catchment area of single local government areas or multiple suburb areas, approx. 15min travel time to access. Provides a mix of recreational, competitive and program formats of participation. Generally services the needs of local communities for training activities and for participation programs. Generally single focus (street elements, ramp), as part of broader recreation precinct. Focus on intermediate/beginner but still usable by more advanced users.

District (Approx. 600-1500m²)

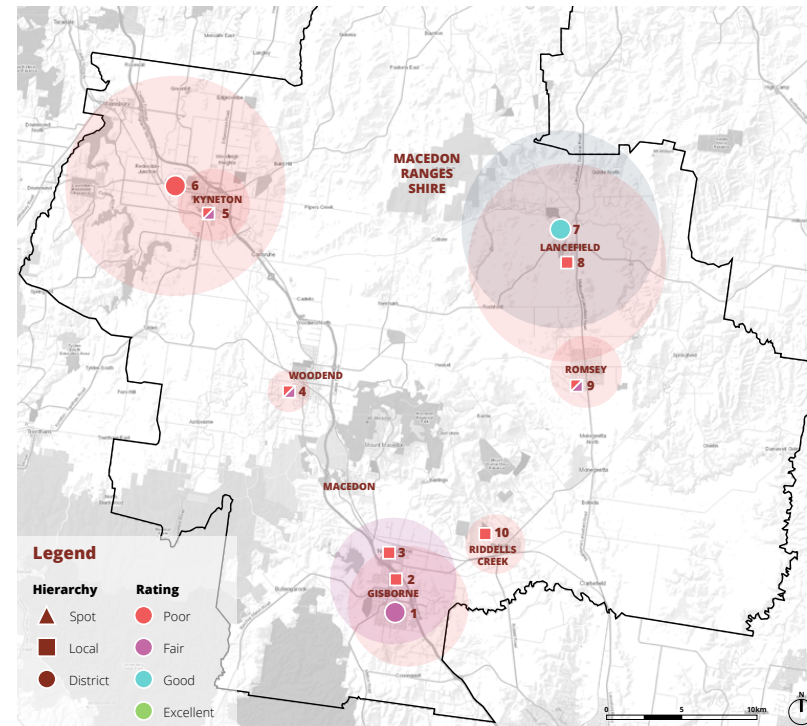
Primary catchment area includes large local government areas, but often covers various Councils due to the nature of the competition or sport, approx. 30min travel time to access. District facilities service a local catchment to provide a mix of recreational, competitive and program formats of participation. Either single user focus (bowl, or street components) or mix thereof. Can be used by users from beginner through to advanced level.

Regional (Over 1500m², or significant components such as iconic bowl)

Primary catchment of local users with extended catchment across multiple local council areas, primarily for competition and events. Provides for high level competition and training, and/or a broad range of sport and active recreation opportunities for a large number of participants across local and regional geographic catchments, generally beyond a single local council area. Regional facilities are best provided at high profile sites in accessible locations with links to transport nodes and/or commercial / community centres and services. All user types (street, park, bowl, vert etc).

It should be noted that whilst some facilities may fit the size of a specified hierarchy, they don't always provide the function of that hierarchy. An example of this could be a skatepark with the footprint of a district facility, however it's limited features and function see it rated as a local facility.

Map of existing facilities



| Facility | Name | Size | Type | Rating | Hierarchy |
|----------|--------------------------|--------------------|------------|-------------|-----------|
| 1 | Gisborne Skatepark | 630m ² | Skate | Fair | District |
| 2 | Gisborne Bike Track | 300m ² | Bike Track | Poor | Local |
| 3 | New Gisborne Bike Track | N/A | Bike Track | Poor | Local |
| 4 | Woodend Skatepark | 210m ² | Skate | Poor / Fair | Local |
| 5 | Kyneton Skatepark | 360m ² | Skate | Poor / Fair | Local |
| 6 | Kyneton Bike Track | 1550m ² | Bike Track | Poor | District |
| 7 | Lancefield Skatepark | 990m ² | Skate | Good | District |
| 8 | Lancefield Bike Track | 600m ² | Bike Track | Poor | Local |
| 9 | Romsey Skatepark | 360m ² | Skate | Poor / Fair | Local |
| 10 | Riddells Creek Skatepark | 300m ² | Skate | Poor | Local |

Existing Skate Facility Reviews

Gisborne Skatepark

Overview

Construction Year: Approx. 2001

Footprint: Approx. 630m²

Model: Skate specific

Skate Style: Street/park

Amenities: Bin x3, bench x2, picnic table x2, shelter x1, signage x1, concrete access path.

Features:

1/4 pipes, flat banks, flat bank hips, fun box with flat bank hips, bank to bank gap, hubba ledge & rail, grind block, flat rail, handrail / flyout rail, stair set, and flat bank to block.

Assessment

| Assessment Criteria | Skatepark Condition | Skatepark Function | Amenities | Overall Ranking |
|---------------------|---------------------|--------------------|--------------|-----------------|
| Rating | F (3) | F (3) | F (3) | F (3) |

The concrete surfacing of the skatepark is in a fair condition for the age of the facility. There are gaps / chips appearing at joints, and around some steelwork elements that could cause hazards for riders with smaller wheels.

The earthwork mounding around the park has been eroded, exposing the underside of ramps in some areas, and allowing debris to fall on to the skate surface in others. Informal access tracks to the facility have formed from the car park to the west, with further erosion / tracks around the shelter.

The facility caters for street and park style riders. The layout and some of the features in the park are slightly dated, however the obstacles are well spaced and usable.

Amenities on site are fair, with plenty of seating and bins available, however some of the amenities are not easily accessed, and require crossing the skatepark or use of the informal access paths to reach them.

PLACE Macedon Ranges Shire Skate and BMX Strategy



Skatepark overview facing north.



Sheltered seating area.



Skatepark overview facing south.

Recommendation

Interim Recommendations

- Monitor cracks and damage to surfaces throughout facility, repair as required. Consider re-instatement of eroded earthwork areas, and formalise access tracks as required.

Strategic Recommendations

- Prioritise site feasibility study to determine location for development of new district facility. Undertake consultation, design, documentation, and construction of new district facility including skatepark, pump track, and other active youth spaces at the preferred site location (subject to outcome of site feasibility study), as per the implementation plan.

p. 17

Existing Skate Facility Reviews

Gisborne Bike Track

Overview

Construction Year: Approx. 2018

Footprint: Approx. 300m²

Model: Bike specific

Skate Style: Bike track

Amenities: Signage x1, the pump track is linked to the skatepark so shares some amenities from the previous page, however there are limited amenities dedicated to the pump track.

Features:

Earthwork / gravel track with pump bumps / rollers and berms.

Assessment

| Assessment Criteria | Skatepark Condition | Skatepark Function | Amenities | Overall Ranking |
|---------------------|---------------------|--------------------|-----------|-----------------|
| Rating | H (4) | P (4) | P-F (4-3) | P (4) |

The bike track is in a generally poor condition with erosion occurring at the bases of the berms, pump bumps, and general earthwork mounding. Whilst more experienced riders may be fine navigating around these issues, they could cause inexperienced riders to fall. Larger rocks are being exposed from erosion, which could also cause issues if left unaddressed. There are existing issues with poor drainage.

The layout of the track includes an informal starting ramp connecting to the skatepark, a series of low pump bumps / rollers, a berm and a series of higher pump bumps / rollers. The proportions of the rollers / berms appear to be inconsistent, and inexperienced riders may struggle to safely regulate speed.

The unsealed gravel / earthwork finish of the track makes it suitable only for riders with larger wheels (BMX, mountain bikes etc), and the track is not suitable for scooter or skateboard riders.



Pump bumps / rollers.



Pump track connection to skatepark.



Eroded berm.

Recommendation

Interim Recommendations

- Reshape gravel / earthwork features to create a more consistent flowing track, remove any larger debris, address drainage / ponding issues through landscaping where possible.

Strategic Recommendations

- Prioritise site feasibility study to determine location for development of new district facility. Undertake consultation, design, documentation, and construction of new district facility including skatepark, pump track, and other active youth spaces at the preferred site location (subject to outcome of site feasibility study), as per the implementation plan.

Existing Skate Facility Reviews

New Gisborne Bike Track

Overview

Construction Year: TBC

Footprint: Undefined

Model: Bike specific

Skate Style: Bike track

Amenities: Signage x1.

Features:

At the time of assessment the bike track was very overgrown, and no features were assessable.

Assessment

| Assessment Criteria | Skatepark Condition | Skatepark Function | Amenities | Overall Ranking |
|---------------------|---------------------|--------------------|-----------|-----------------|
| Rating | H (5) | H (5) | P (4) | H (5) |

At the time of assessment the bike track was very overgrown, the only identifiable feature was the signage.

The track is located to the east of Ross Watt Reserve, and there is no formalised access path or amenities for the track. The current site location has accessibility issues, and is close to nearby residential properties.

Mounding for berms / rollers for the track were visible, however appeared to be delapidated to the point they would be hazardous to use. The overgrowth of the track also reduced visibility of any hazards that may be present, creating further danger if used.



Overgrown BMX Track signage.



Overgrown BMX Track mounds.



Overgrown site.

Recommendation

Interim Recommendations

- Cut overgrown grass / foliage in the reserve, reshape gravel / earthwork features to create a more consistent flowing track, remove any larger rocks / debris, address drainage / ponding issues through landscaping where possible.

Strategic Recommendations

- Upon completion and endorsement of the Ross Watt Reserve Masterplan, undertake consultation, design, documentation, and construction of a local level pump track, depending upon progress of other priority elements at Ross Watt Reserve.

Existing Skate Facility Reviews

Woodend Skatepark

Overview

Construction Year: Approx. 1999

Footprint: Approx. 210m²

Model: Skate specific

Skate Style: Street

Amenities: Bin x1, bench x1, signage x1, nearby car park however no accessible path to skatepark.

Features:

1/4 pipe, flat bank hip, grind block, euro gap, handrail, flat bank, hubba / flyout ledge.

Assessment

| Assessment Criteria | Skatepark Condition | Skatepark Function | Amenities | Overall Ranking |
|---------------------|---------------------|--------------------|--------------|-----------------|
| Rating | P (4) | P-F (4-3) | P (4) | P (4) |

There are gaps / chips appearing at joints, and around some steelwork elements that could cause hazards for riders with smaller wheels. Gaps present at the joints around the top of banked elements may become particularly hazardous.

The earthwork mounding around the park has been eroded, exposing the underside of ramps in some areas, and allowing debris to fall on to the skate surface in others. There are particular issues at the bases of the ramps, where debris could cause riders to fall.

The features of the park are usable, however the proportions and spacing of some elements feels dated, and provide limited flow.

No shelter is provided for the skate area, however there are trees to the north and west of the facility that may provide shade at certain hours of the day.



Skatepark facing North.



Erosion of earthworks around skatepark.



Cracking / surface damage at joints.

Recommendation

Interim Recommendations

- Address issues with erosion and debris from the earthwork mounding around the skatepark through landscape re-modelling, repair key cracks / chips on features that are hazardous.

Strategic Recommendations

- Undertake consultation, design, documentation, and construction of new local facility with skatepark and amenities. Future development of nearby Community Centre to be considered when skatepark design is undertaken, as per the implementation plan.

Existing Skate Facility Reviews

Kyneton Skatepark

Overview

Construction Year: Approx. 2001

Footprint: Approx. 360m²

Model: Skate specific

Skate Style: Park

Amenities: Shelter x1, picnic table x2, bench x2, signage x1, bin x1, nearby car park however no accessible path to skatepark.

Features:

A combination of steel & pre-cast concrete features on a concrete slab including: 1/4 pipes, flat banks, spine, jump box / gap with ledge, kerb slider, and grind block / manual pad.

Assessment

| Assessment Criteria | Skatepark Condition | Skatepark Function | Amenities | Overall Ranking |
|---------------------|---------------------|--------------------|-----------|-----------------|
| Rating | P-F (4-3) | P-F (4-3) | F (3) | P-F (4-3) |

Refer also "Kyneton Skatepark Assessment July 2021" undertaken by Baseplate.

Many of the safety issues highlighted in the report from July 2021 have been addressed, steel coping has been capped where required, and obstacles in hazardous positions have been relocated. A few issues regarding the skatepark standards remain un-addressed.

The park is a combination of pre-fabricated steel & concrete elements on a concrete slab. Many of these elements are well worn, and dated. The layout of the elements is also dated, and the park does not have a coherent flow.

At the time of the assessment there were drainage issues present, with a swale / ponding occurring to the south west of the skatepark.

Amenities on site were generally fair, however there is no accessible path to the skate area, and the shelter is not located in a good location for spectators.

PLACE Macedon Ranges Shire Skate and BMX Strategy



Skatepark facing west.



Skatepark facing east.



Repairs to skatepark steel.

Recommendation

Interim Recommendations

- Address out-standing issues highlighted in "Kyneton Skatepark Assessment July 2021", monitor further degradation of the skatepark and repair accordingly.

Strategic Recommendations

- Undertake consultation, design, documentation, and construction of new district facility including skatepark, pump track, and other active youth spaces, in-line with re-development of adjacent oval, as per the implementation plan.

p. 21

Existing Skate Facility Reviews

Kyneton Bike Track

Overview

Construction Year: TBC
Footprint: Approx. 1500m²
Model: Bike specific
Skate Style: Bike track
Amenities: Signage x1
Features:
 Earthwork / gravel track with pump bumps / rollers and berms and concrete start ramp.

Assessment

| Assessment Criteria | Skatepark Condition | Skatepark Function | Amenities | Overall Ranking |
|---------------------|---------------------|--------------------|-----------|-----------------|
| Rating | H (5) | P (4) | P (4) | P (4) |

At the time of assessment hazard tape was across the access point of the facility, and tree management works appeared to be happening.

The grass mounding and earthworks around the track appeared to be recently mown, however many of the elements required shaping, and had become dilapidated.

Erosion of the elements was present, with exposed rocks appearing on the pump bumps / rollers. Experienced riders may be able to navigate these issues, however they may present hazards to inexperienced users. The proportions of the rollers / berms appear to be inconsistent, and inexperienced riders may struggle to safely regulate speed.

The unsealed gravel / earthwork finish of the track makes it suitable only for riders with larger wheels (BMX, mountain bikes etc), and the track is not suitable for scooter or skateboard riders.

The facility is lacking any formalised amenities.



BMX track facing East.



BMX track facing West.



BMX track access path & signage.

Recommendation

Interim Recommendations

- Reshape gravel / earthwork features to create a more consistent flowing track, remove any larger debris, address drainage / ponding issues through landscaping where possible.

Strategic Recommendations

- Undertake consultation, design, documentation, and construction of new district facility, considering re-shaping / re-surfacing of track, with opportunity to integrate spectator seating and additional amenities, as per the implementation plan.

Existing Skate Facility Reviews

Lancefield Skatepark

Overview

Construction Year: Approx. 2017

Footprint: Approx. 990m²

Model: Skate Specific

Skate Style: Park

Amenities: Signage x1, sculptural seating blocks, re-purposed seating "bleachers", bin x1 .

Features:

Level change with stair set, banks, rails & ledges, street area with kicker gap, hip & blocks, flat bank to kerb features, transition section with pump bump, pocket, hips & combination mini-ramp, pump path & track.

Assessment

| Assessment Criteria | Skatepark Condition | Skatepark Function | Amenities | Overall Ranking |
|---------------------|---------------------|--------------------|--------------|-----------------|
| Rating | G (2) | E (1) | F (3) | G (2) |

Lancefield Skatepark includes a wide range of features for both street and transition riders. The obstacles are well spaced, and the varied heights / complexity of the features provide the opportunity for progression. The concrete surfacing of the skatepark is in a generally good condition, with minor cracking in some areas.

The skatepark is located to the south east of the recreation reserve, approx. 45m from the nearest car parking. There is no formalised access to the skatepark.

Repurposed bleacher seating has been provided under the shade of a nearby tree. The bleachers are in a dilapidated state, however remain usable.

At the time of inspection the pump track / path area was overgrown, with plants extending over the path which could be hazardous. Leaves and other debris were collecting at the edge of the skatepark due to overgrowth too.



Skatepark facing South West.

Skatepark bleacher seating.

Overgrown skatepark pump features.

Recommendation

Interim Recommendations

- Cut back vegetation surrounding the skatepark so features are clear, and debris can be swept away from skate areas, monitor cracks and repair as required.
- Consider adding a formalised access path, and repair of bleacher seating.

Existing Skate Facility Reviews

Lancefield Bike Track

Overview

Construction Year: TBC

Footprint: Approx. 600m²

Model: Bike specific

Skate Style: Bike track

Amenities: The pump track is linked to the skatepark so shares some amenities from the previous page, however there are limited amenities dedicated to the pump track.

Features:

Earthwork / gravel track with pump bumps / rollers and berms.

Assessment

| Assessment Criteria | Skatepark Condition | Skatepark Function | Amenities | Overall Ranking |
|---------------------|---------------------|--------------------|-----------|-----------------|
| Rating | H (4) | P (4) | P-F (4-3) | P (4) |

At the time of assessment the bike track was very overgrown, berms and pump bumps / rollers were identifiable, but appeared to be delapidated to the point they may be hazardous to use. The overgrowth of the track also reduced visibility of any hazards that may be present, creating further danger if used.

The layout of the track was largely unclear, however proportions of the rollers / berms appear to be inconsistent, and inexperienced riders may struggle to safely regulate speed or navigate around the track.

There is no formalised access or connection between the bike track and the skatepark, and no amenities serving the track directly.



Overgrown berm.



Overgrown bike track facing north.



Overgrown bike track facing south.

Recommendation

Interim Recommendations

- Cut overgrown grass / foliage in the reserve, reshape gravel / earthwork features to create a more consistent flowing track, remove any larger rocks / debris, address drainage / ponding issues through landscaping where possible.

Strategic Recommendations

- Undertake consultation, design, documentation, and construction of new local facility considering re-shaping of track, sealed surfacing, integration with the skatepark, inclusion of spectator seating, and additional amenities, as per the implementation plan.

Existing Skate Facility Reviews

Romsey Skatepark

Overview

Construction Year: Approx. 2001

Footprint: Approx. 360m²

Model: Skate specific

Skate Style: Park

Amenities: Signage x1, bench x2, bike rack, bin x 1.

Features:

Quarter pipes, roll-in / bank, kicker, rails, grind block, fun box with rail & bank to bank gap.

Assessment

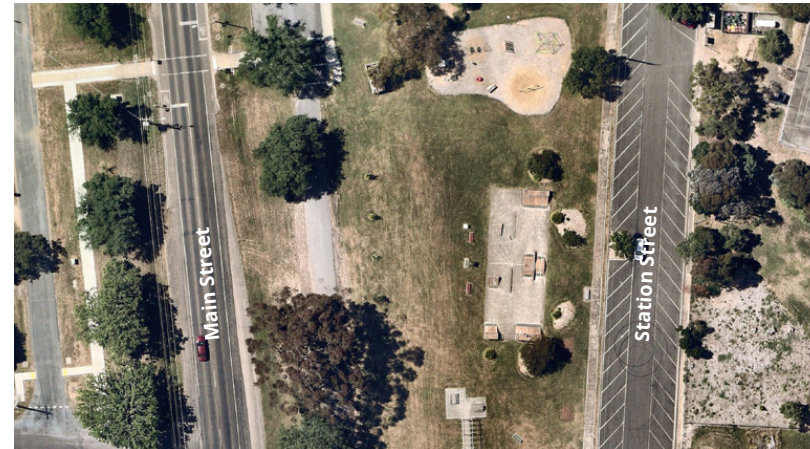
| Assessment Criteria | Skatepark Condition | Skatepark Function | Amenities | Overall Ranking |
|---------------------|---------------------|--------------------|------------------|------------------|
| Rating | P-F (4-3) | P-F (4-3) | P-F (4-3) | P-F (4-3) |

Refer also "Romsey Skatepark Assessment July 2021" undertaken by Baseplate.

Some of the safety issues highlighted in the report from July 2021 have been addressed, steel coping has been capped where required, and obstacles in hazardous positions have been relocated. A few issues regarding the skatepark standards remain un-addressed.

The park is made up of pre-fabricated concrete elements on a concrete slab. Many of these elements are well worn, and dated. The layout of the elements is also dated, and the park does not have a coherent flow.

An access path is not provided for the facility.



Skatepark facing South.



Skatepark facing North.



Cracking / rough surfacing on obstacles.

Recommendation

Interim Recommendations

- Monitor cracks and damage to obstacles throughout facility, repair as required, pending re-development works mentioned below.

Strategic Recommendations

- Install new skate facility, detail design currently being undertaken by Baseplate.

Existing Skate Facility Reviews

Riddells Creek Skatepark

Overview

Construction Year: Approx. 2009

Footprint: Approx. 300m²

Model: Skate specific

Skate Style: Park

Amenities: Signage x1, Bench x1, concrete access path to car park.

Features:

Small street section with banks & rail, bowl with spine & roll-in section.

Assessment

| Assessment Criteria | Skatepark Condition | Skatepark Function | Amenities | Overall Ranking |
|---------------------|---------------------|--------------------|-----------|-----------------|
| Rating | H (5) | P (4) | P (4) | P (4) |

Cracks in the concrete surfacing are present in many locations at the steelwork joints in the bowl. In some locations cracks / blow-outs are big enough to stop a skateboard wheel and cause users to fall.

At the time of inspection water was ponding along the north side of the bowl, away from the drainage pit, and did not appear to be able to reach the pit without intervention.

The street section includes very low level features that are close together. The size and proximity of the features makes them unusable for many riders, and provides little opportunity for learning or progression.

Access paths are provided to the facility, however amenities are lacking.



Pooling of water at base of bowl.



Concrete cracking at joints.



Small "street" section features.

Recommendation

Interim Recommendations

Repair key cracks / blow-outs throughout the bowl, and address drainage issues.

Strategic Recommendations

- Undertake consultation, design, documentation, and construction of new local facility with skatepark and amenities, as per the implementation plan.

8. Facility comparison benchmarking

Given Macedon Ranges location in central Victoria close to Melbourne, comparing it to other major regional centres and adjacent municipalities, can give a good understanding of where it currently sits in skatepark provision. To do this, six other centres across regional Victoria have been compared against Macedon Ranges.

Table 2 provides a snap shot of population and numbers of skateparks to get an understanding of current provision. It outlines that generally most municipalities, all have a facility of at least a district scale, if not regional.

Macedon Ranges, when compared against all of the other municipalities, actually has one of the highest provisions of skateparks per capita compared to other councils sampled in this table.

Outwardly then it could be said that Macedon Ranges is a leading council in skate provision however this table does not assess the quality, age or functionality of these parks or where they are located within their councils. Therefore it only shows that Macedon Ranges is performing well in provision however the existing skatepark assessments outlined previously show that there are some significant issues with many of the existing facilities that require consideration moving forward to ensure Macedon Ranges has high quality facilities to cater for current and future demand.

| COUNCIL/SHIRE | REGIONAL SKATEPARK (1200 sq.m+) | DISTRICT SKATEPARK | LOCAL SKATEPARK | BIKE / PUMP TRACK | FACILITY TOTAL | TOTAL POPULATION | PEOPLE PER FACILITY |
|-----------------|---------------------------------|--------------------|-----------------|-------------------|----------------|------------------|---------------------|
| MACEDON RANGES | 0 | 2 | 4 | 4 | 10 | 51,743 | 5,174 |
| MITCHELL | 0 | 2 | 2 | 3 | 7 | 49,684 | 7,098 |
| GREATER BENDIGO | 1 | 2 | 3 | 8 | 14 | 121,221 | 8,659 |
| MOUNT ALEXANDER | 0 | 0 | 1 | 2 | 3 | 20,253 | 6,751 |
| HEPBURN | 0 | 1 | 2 | 2 | 5 | 16,604 | 3,321 |
| MOORABOOL | 0 | 0 | 3 | 1 | 4 | 37,895 | 9,474 |
| MELTON | 1 | 2 | 5 | 1 | 9 | 198,975 | 22,108 |

Table 2 Benchmarking of existing skateparks with sample of Councils in comparison to Macedon Ranges Shire

Choosing the best model

GEOGRAPHICAL IMPLICATIONS OF SKATEPARK DISTRIBUTION MODELS

INTRODUCTION

The model of skatepark provision changes significantly between Councils given significant differences public transport and access, the distribution of population and the clustering of like services and facilities. In summary, local government areas can be classified as follows;

METROPOLITAN

These are generally inner city municipalities with good public transport. (Eg: Yarra, Boroondara). In this instance, the recommended hierarchical model of provision focuses on a central regional facility and then is complimented with local spaces as applicable.

COUNTRY CENTRES

These are major townships servicing surrounding smaller rural neighborhoods (Eg: Albury, Ballarat, Shepparton etc). The recommended model is also for a single central regional facility with local facilities to complement the main space as applicable.

SUBURBAN AREAS

These are outer city municipalities with significant urban development but more limited public transport. Casey and Cardinia Shire are considered as this type of municipality. It is generally recommended that 1-2 large regional facilities are located at a central space within the LGA with a series of smaller localised parks distributed across the suburbs.

TOWNSHIPS

These are outer metro and semi-rural municipalities such as Bass Coast and Mornington Peninsula Shire where there are only a few major centralised population centres, with smaller townships making up the majority of the population. Macedon Ranges Shire sits within this typology.

DISCUSSION

Whilst a traditional regional facility model works in Metropolitan, Country Centres and Suburban Areas, a municipality such as Macedon Ranges should consider a different model due to the distance between higher populated townships, creating access issues for younger cohorts. Both Bass Coast and Mornington Peninsula Shire have looked at a number of district facilities across their townships to service each small population cluster rather than a single centralised facility.

For Macedon Ranges Shire, there is around 15-20min drive between each township and given the limited public transport between towns, it is difficult to expect young people to be able to regularly access a single larger facility in one town over others. Therefore a facility in each town is the most equitable approach. The actual scale of these facilities then should respond to the current and estimated future population of each town. As such larger and growing towns would require a larger facility to accommodate greater use accordingly.

THE HIERARCHY OF THE MODEL

Following on from the above, the demographics of the shire provide clarity on the scale and frequency of facilities. These are outlined below, showing current population and expected growth over the next 10 years. By analysing the current projected population of every town and immediate surrounding district, we get clarity on where the larger population centres are and which towns are growing. As outlined below, there is no single major population centre, rather a number of similarly sized towns. Therefore skate provision is based upon similar scaled facilities accordingly, with focusing on slightly larger spaces in Gisborne, Kyneton and Romsey whilst smaller facilities can be considered in Macedon and Lancefield (noting it already has a new skatepark).

| Macedon Ranges Shire | 2023 | | 2036 | | Change between 2023 and 2036 | | Suggested scale of facility |
|------------------------------------|--------|-------|--------|-------|------------------------------|--------|-----------------------------|
| | Number | % | Number | % | Number | % | |
| Gisborne District | 14,904 | 100.0 | 20,170 | 100.0 | +5,266 | +35.33 | large district facility |
| Kyneton District | 10,085 | 100.0 | 11,707 | 100.0 | +1,622 | +16.09 | large district facility |
| Lancefield District | 3,472 | 100.0 | 4,465 | 100.0 | +993 | +28.61 | local |
| Macedon and Mount Macedon District | 3,490 | 100.0 | 3,481 | 100.0 | -9 | -0.25 | local / spot |
| Riddells Creek District | 5,012 | 100.0 | 7,389 | 100.0 | +2,377 | +47.42 | sub district facility |
| Romsey District | 7,234 | 100.0 | 9,203 | 100.0 | +1,969 | +27.22 | sub district facility |
| Woodend District | 8,778 | 100.0 | 9,357 | 100.0 | +579 | +6.59 | sub district facility |

Source: <https://forecast.id.com.au/macedon-ranges>



9. The Right Locations

Introduction

The following section outlines where possible new skateparks should be sited. It looks at whether the existing skateparks be replaced with a new facility, or whether new locations should be considered within the various townships that better serves the community. A number of sites have been nominated by Macedon Ranges Shire and these were assessed following site discussions and meetings. These sites are assessed against a number of site selection criteria to confirm which is the most suitable location accordingly.

Site selection criteria

To ensure the best locations for new skateparks across the shire, park, a number of site selection criteria have been developed. The overall size or scale of a space is an important consideration to ensure a skatepark of an appropriate size can be accommodated. There are also a range of more general criteria that should be applied to determine the suitability and feasibility of a site being able to accommodate a skate space. These have been established using information from the SRV Skatepark guide (2001) and Playce's own professional experience (successfully designed over 400 skatepark projects worldwide). These are listed in the table on the following page. Obviously all criteria are not weighted the same, with some being absolutely critical (such as physical scale) whilst others are more preferable (eg: close to shopping centres). The weighting is also summarized in the table. These criteria have then been applied to a number of proposed locations within the shire to determine possible new locations in most of the towns. Lancefield has not been assessed given it has a recent high quality skatepark built in its town. Macedon has also not been assessed due to the minor nature of a possible skate space for this smaller township.

Discussion

Following a detailed review of a range sites (shown in the table on the following page) there are some interesting outcomes. For Gisborne, whilst the existing skatepark location ranks reasonably well, a new possible location south of Jackson Creek on Robertson Street ranks even higher. Given its central, highly visible location near the Police Station and McDonald's, this new site is worth serious consideration for a new district facility.

For Kyneton, after reviewing both the existing skatepark and a possible new location at the Botanical Gardens, the existing skatepark ranked much higher, particularly with natural surveillance and accessibility. Woodend sites both ranked well, with a proposed new site at Buffalo Stadium ranking high however it is close to housing. The existing skatepark, whilst on a smaller site, can still be expanded to accommodate a larger facility and was deemed the preferred location for redevelopment. For Romsey, the existing site was assessed and ranked very highly so looking for another location was not deemed necessary. At Riddells Creek, an alternative site at Lions Park was assessed against the existing facility location and ranked equally. This is mainly due to natural surveillance. If the trees along the boundary of the existing skatepark reserve could be removed, the Riddells Creek Recreation Reserve is the preferred location for an upgraded facility.

A snapshot of site assessments

Gisborne

Existing Skatepark

- ✓ Already used as a skate facility
- ✓ Part of existing recreational precinct
- ✓ Close distance town centre
- ✗ Location quite land locked
- ✗ Site not highly visible from road

Jackson creek Location

- ✓ Large open space area
- ✓ Close to police station
- ✓ Close to food and drink
- ✓ Close distance to town centre
- ✓ Path access to major playspace
- ✓ Land not used for other recreation use
- ✓ High natural surveillance

Kyneton

Existing Skatepark

- ✓ Already used as a skate facility
- ✓ Part of existing recreational precinct
- ✓ Close distance to town centre
- ✓ High natural surveillance

Botanical Gardens

- ✗ Site not highly visible from road
- ✗ site difficult to access
- ✗ Low natural surveillance

Woodend

Existing Skatepark

- ✓ Already used as a skate facility
- ✓ Part of existing recreational precinct
- ✓ Close proximity to town centre

- ✓ High natural surveillance
- ✗ Location quite land locked

Buffalo Stadium

- ✓ Large open space area
- ✓ Close to existing ball courts
- ✓ Close to toilets
- ✗ Close to housing on other side of street
- ✓ High natural surveillance

Riddells Creek

Existing Skatepark

- ✗ Low natural surveillance
- ✗ Site not highly visible from road
- ✓ Part of existing recreational precinct

An alternate site location at the Lions Park Precinct was considered for Riddells Creek skatepark, however it is no longer considered suitable due to over-development of the site.

Lions Park Precinct

- ✗ Restricted space due to existing development
- ✓ High natural surveillance
- ✓ Part of existing recreational precinct

Romsey

- ✓ Large open space area
- ✓ Close to police station
- ✓ Close to food and drink
- ✓ Close distance to town centre
- ✓ High natural surveillance

Lancefield

- ✓ Already used as a skate facility
- ✓ Part of existing recreational precinct

10. Site Assessment Table

Higher ranking site:

| CRITERIA | WEIGHTING (10 being most important) | Gisborne | | Kyneton | | Woodend | | Riddells Creek | | Romsey | Lancefield |
|--|--|----------------------------|---|----------------------------|---------------------------|----------------------------|--------------------------------|----------------------------|--------------------|----------------------------|----------------------------|
| | | Site 1: Existing skatepark | Site 2: Open Space south of Jackson Creek | Site 1: Existing Skatepark | Site 2: Botanical Gardens | Site 1: Existing Skatepark | Site 2: Buffalo Sports Stadium | Site 1: Existing Skatepark | Site 2: Lions Park | Site 1: Existing Skatepark | Site 1: Existing Skatepark |
| Is the proposed site capable to cater for a space minimum 1500 sq/m that enables regional scale skate space? | 8 | 4 | 8 | 8 | 5 | 6 | 8 | 8 | 3 | 8 | 8 |
| Is the site visually prominent with good public surveillance for safety? | 8 | 3 | 7 | 8 | 1 | 8 | 8 | 4 | 7 | 8 | 5 |
| Is the site location an adequate distance (50m) from residential dwellings and incompatible land uses to avoid potential noise and light intrusions? | 8 | 8 | 8 | 8 | 6 | 8 | 3 | 8 | 8 | 8 | 8 |
| Is there a safe drop off area or adequate car parking if applicable? | 6 | 5 | 6 | 6 | 3 | 6 | 6 | 4 | 4 | 5 | 5 |
| Is the site a short distance from police response calls and does it provide ease of police access? | 6 | 3 | 6 | 5 | 2 | 5 | 4 | 5 | 5 | 6 | 5 |
| Can the site provide adequate emergency vehicle access (fire and ambulance)? | 6 | 4 | 6 | 6 | 2 | 6 | 6 | 5 | 5 | 6 | 5 |
| Is the site close to or can accommodate amenities (water, toilets, shade, food and drink)? | 6 | 5 | 5 | 5 | 6 | 6 | 6 | 4 | 6 | 6 | 5 |
| Will the location of a skate facility on the site not substantially displace existing recreational or other site users? | 6 | 4 | 6 | 6 | 4 | 5 | 5 | 5 | 3 | 5 | 5 |
| How readily accessible is the site to regular cleaning for existing council cleaning and maintenance teams? | 6 | 4 | 5 | 6 | 6 | 5 | 5 | 5 | 5 | 6 | 5 |
| Is the location consistent with the strategic land use, masterplanning, planning scheme and zoning? | 6 | 5 | 5 | 6 | 4 | 5 | 5 | 5 | 4 | 6 | 6 |
| Is the proposed site not impacted by major existing land use implications or services? | 5 | 3 | 6 | 5 | 2 | 4 | 5 | 5 | 4 | 5 | 5 |
| Are there shared path connections to the proposed site? | 5 | 4 | 5 | 3 | 4 | 5 | 5 | 2 | 3 | 3 | 0 |
| Is the site in close proximity to existing shopping centres, sports or recreation facilities or interested schools? | 5 | 4 | 5 | 4 | 2 | 4 | 4 | 3 | 5 | 5 | 4 |
| Is there appropriate access to public transport at the proposed site? | 4 | 0 | 0 | 0 | 0 | 1 | 1 | 3 | 3 | 0 | 0 |
| Can the proposed site provide safe entry to and from the site and safe setbacks from busy roads and intersections? | 4 | 3 | 3 | 3 | 3 | 2 | 3 | 4 | 4 | 4 | 4 |
| Is the site free from major geotech, ground water and drainage implications? | 4 | 2 | 2 | 4 | 3 | 4 | 4 | 4 | 4 | 4 | 4 |
| Can the site facilitate minimal loss of significant trees? | 3 | 3 | 3 | 3 | 1 | 2 | 3 | 0 | 1 | 3 | 3 |
| Can the site facilitate minimal impact on pedestrian or road network and access including existing desire lines? | 2 | 1 | 2 | 2 | 2 | 2 | 2 | 2 | 2 | 2 | 2 |
| Is the proposed site adjacent to other like/complimentary activities to create a greater recreational experience ? | 2 | 2 | 2 | 2 | 2 | 2 | 2 | 2 | 2 | 2 | 2 |
| TOTALS | 100 | 67 | 90 | 90 | 58 | 86 | 85 | 78 | 78 | 92 | 82 |

11. Implementation Plan

| PRIORITY | WORKS | SCALE | SKATE ELEMENTS | COMMENTS |
|-----------------------|--|--------------------------|---|--|
| SHORT TERM (2024-29) | Detail design, documentation, and construction of Romsey Skatepark | LOCAL | <i>Suggested enclosed bowl and street elements as shown in Baseplate Design</i> | <i>A design of Romsey Skatepark has been developed by Baseplate for the local Lions Club following community engagement with local skate stakeholders. Prioritise the construction of this new park to replace aging facility. Current commitment of \$550,000 towards the construction of this facility from the State Government.</i> |
| | Site feasibility study for Gisborne Skatepark / Active Recreation Space | DISTRICT | <i>TBC</i> | <i>Prioritise study to determine preferred site location for Gisborne Skatepark / Active Recreation Space. Consider existing site, Robertson Street location, and any other potential sites identified by Council. Site locations to undergo a comprehensive site feasibility assessment, taking into account safety, accessibility, visual impact, and other important factors.</i> |
| | Design of Kyneton Skatepark / Active Recreation Space | DISTRICT | <i>Suggested street focus with some transition elements incl bowl subject to community feedback incl pump track and other recreation elements</i> | <i>A design process should be undertaken as a priority for this skatepark given the population of Kyneton and current aging condition of the existing facility.</i> |
| | Construction of Kyneton Skatepark / Active Recreation Space | <i>As outlined above</i> | <i>As outlined above</i> | <i>Construction of new park to replace aging facility.</i> |
| | Consultation, detail design, and documentation of Riddells Creek Skatepark | <i>As outlined above</i> | <i>Suggested mini ramp or bowl and basic street elements subject to community feedback</i> | <i>Design process to be undertaken for this skatepark given aging condition of the existing facility.</i> |
| | Consultation, detail design, and documentation of Woodend Skatepark | LOCAL | <i>Suggested mini ramp or bowl and basic street elements subject to community feedback</i> | <i>A design process should be undertaken for this skatepark given the aging condition of the existing facility. Future development of nearby Community Centre to be considered when skatepark design is undertaken. Timeline and co-ordination of Community Centre development with skatepark design to be confirmed by Council.</i> |
| MEDIUM TERM (2030-35) | Construction of Riddells Creek Skatepark | <i>As outlined above</i> | <i>As outlined above</i> | <i>Construction of new park to replace aging facility.</i> |
| | Consultation, detail design, and documentation of Gisborne Skatepark / Active Recreation Space | <i>DISTRICT</i> | <i>Mix of elements to accommodate district elements incl bowled elements, street components and pump track</i> | <i>Complete design for redevelopment of Gisborne Skatepark. Given current fair condition of existing facility, implementation of new park not as high priority. Note significant opportunity to consider other location as new facility that ties in with possible playspace upgrade as intergenerational recreation precinct.</i> |

Implementation Plan (continued)

| PRIORITY | WORKS | SCALE | SKATE ELEMENTS | COMMENTS |
|------------------------------------|--|--------------------------|--|---|
| MEDIUM TERM (2030-35) | Construction of Woodend Skatepark | <i>As outlined above</i> | <i>As outlined above</i> | <i>Construction of new park to replace aging facility.</i> |
| | Construction of Gisborne Skatepark/Active Recreation Space | <i>As outlined above</i> | <i>As outlined above</i> | <i>Construction of new park to replace aging facility.</i> |
| | Consultation, detail design, and documentation of New Gisborne Pump Track | LOCAL | <i>Suggested bitumen pump track with rollers and berms subject to community feedback</i> | <i>A design process should be undertaken for this pump track given the degraded condition of the existing facility.</i> |
| | Construction of New Gisborne Pump Track | <i>As outlined above</i> | <i>As outlined above</i> | <i>Construction of new park to replace aging facility.</i> |
| LONG TERM (2036-40) | Consultation, detail design, and documentation of Kyneton BMX Track upgrade | DISTRICT | <i>Upgrade / renewal of existing track subject to community feedback</i> | <i>Develop design considering re-shaping / upgrade of track, surfacing could remain as dirt pending consultation with community. Opportunity to integrate spectator seating, additional amenities, and provide recreational BMX opportunities.</i> |
| | Consultation, detail design, and documentation of Lancefield Pump Track upgrade | LOCAL | <i>Upgrade / renewal of existing track subject to community feedback</i> | <i>Develop design considering re-shaping / re-surfacing of track. Opportunity to include sealed surface for riders with smaller wheels. Consider integration with skatepark, inclusion of spectator seating, and additional amenities.</i> |
| | Construction of Kyneton BMX Track upgrade | <i>As outlined above</i> | <i>As outlined above</i> | <i>Construction of new BMX track to replace aging facility.</i> |
| | Construction of Lancefield Pump Track upgrade | <i>As outlined above</i> | <i>As outlined above</i> | <i>Construction of new pump track to replace existing facility.</i> |
| ADDITIONAL FACILITY CONSIDERATIONS | Site feasibility, consultation, detail design, documentation, and construction of local level skate elements at smaller townships across the Shire subject to demand | SPOT / LOCAL | <i>Suggested mini ramp or basic street elements subject to community feedback</i> | <i>Given small scale of elements, consider co-locating skate components with other recreation space such as skate ledges around existing basketball court, or integration into other suitable developments.</i> |
| | Consider inclusion of skate provision in new housing developments throughout the Shire | SPOT / LOCAL | <i>Lower level / informal skate elements built into proposed developments</i> | <i>Opportunities for inclusion of lower level / informal skate elements as part of playspaces, ball courts, and landscape plas for open space developments in new sub-divisions. For example: skateable seating / ledges next to ball courts.</i> |
| | Council to undertake advocacy for mountain bike trail provision | | | <i>Whilst not the focus of this strategy, there was some community interest in mountain bike trails as part of the survey outcomes. Council to advocate with land managers (Parks Victoria and DECCA) where mountain biking currently occurs for provision of this sport.</i> |

Implementation Budget Estimates

| Facility | Key Implementation Elements | | | | Implementation Plan Budget Estimates | | |
|--|-----------------------------|---|------------------------------|--------------------------|--------------------------------------|---------------------------------------|-------------------------------------|
| | Site feasibility study | Consultation, detail design & documentation of new facility | Construction of new facility | Total budget for renewal | Short Term: 2024 - 2029 | Medium Term: 2030 - 2035 | Long Term: 2036 - 2040 |
| Romsey Skatepark | N/A | \$30,000 | \$960,000 | \$990,000 | \$990,000 | | |
| Riddells Creek Skatepark | N/A | \$30,000 | \$500,000 | \$530,000 | \$30,000 | \$500,000 | |
| Gisborne Skate & Active Hub | \$15,000 | \$90,000 | \$1,500,000 | \$1,605,000 | \$15,000 | \$1,590,000 | |
| Kyneton Skate & Active Hub | N/A | \$90,000 | \$1,500,000 | \$1,590,000 | \$1,590,000 | | |
| Woodend Skatepark | N/A | \$40,000 | \$600,000 | \$640,000 | \$40,000 | \$600,000 | |
| New Gisborne Pump Track | N/A | \$20,000 | \$250,000 | \$270,000 | | \$270,000 | |
| Kyneton BMX Track | N/A | \$40,000 | \$600,000 | \$640,000 | | | \$640,000 |
| Lancefield Pump Track | N/A | \$20,000 | \$250,000 | \$270,000 | | | \$270,000 |
| Smaller Township Assessments | N/A | \$15,000 (each site) | \$150,000 (each site) | \$165,000 (each site) | | | \$165,000 (each site) |
| | | | Grand Total | \$6,700,000 | Short Term Total: \$2,665,000 | Medium Term Total: \$2,960,000 | Long Term Total: \$1,075,000 |

The table above outlines the main facilities considered in this strategy. Additional “spot / local” facilities should be considered in future developments throughout the Shire (for example new housing estates where active facilities could be included), to provide complementary, informal skate facilities.

12. Implementation Strategy

Discussion

From undertaking this strategic review it is clear that the existing skate and BMX facilities in Macedon Ranges Shire do not appropriately meet the community's needs. Many of the existing facilities are run down and have functional and condition issues. The consultation undertaken to date expresses a need for a new or upgraded facilities, with opportunities for pump tracks and additional amenities to make the spaces cater for wider ranges of users.

There will be significant population increases in towns throughout the Shire, particularly Gisborne, Kyneton, Romsey, Riddells Creek and Lancefield. The existing facilities in these towns vary in condition and scale, and these growth areas are key to focus on for future skatepark and BMX provision.

For Macedon Ranges Shire, there is around 15-20min drive between each township and given the limited public transport between towns, it is difficult to expect young people to be able to regularly access a single larger facility in one town over others. Therefore a facility in each town is the most equitable approach. The actual scale of these facilities then should respond to the current and estimated future population of each town. As such larger and growing towns would require a larger facility to accommodate greater use accordingly.

The condition assessments, size, age, and risk of each facility has also informed the implementation strategy. Older facilities with dated steel ramps (such as Romsey and Kyneton) present the highest level of risk, and are therefore prioritised in the strategy. The following recommendations are outlined below.

Recommendations

Short Term: 2024 - 2029

- Detail design, documentation, and construction of local level skatepark in Romsey, as developed by Baseplate.
- Site feasibility study for district level skatepark / active recreation space in Gisborne.
- Consultation, detail design, documentation, and construction of district level skatepark / active recreation space in Kyneton.
- Consultation, detail design, and documentation for local level skatepark in Riddells Creek.
- Consultation, detail design, and documentation for local level skatepark in Woodend.

Medium Term: 2030 - 2035

- Construction of local level skatepark in Riddells Creek.
- Construction of local level skatepark in Woodend.
- Consultation, detail design, documentation, and construction of district level skatepark / active recreation space in Gisborne.
- Consultation, detail design, documentation, and construction of local level pump track in New Gisborne.

Long Term: 2036 - 2040

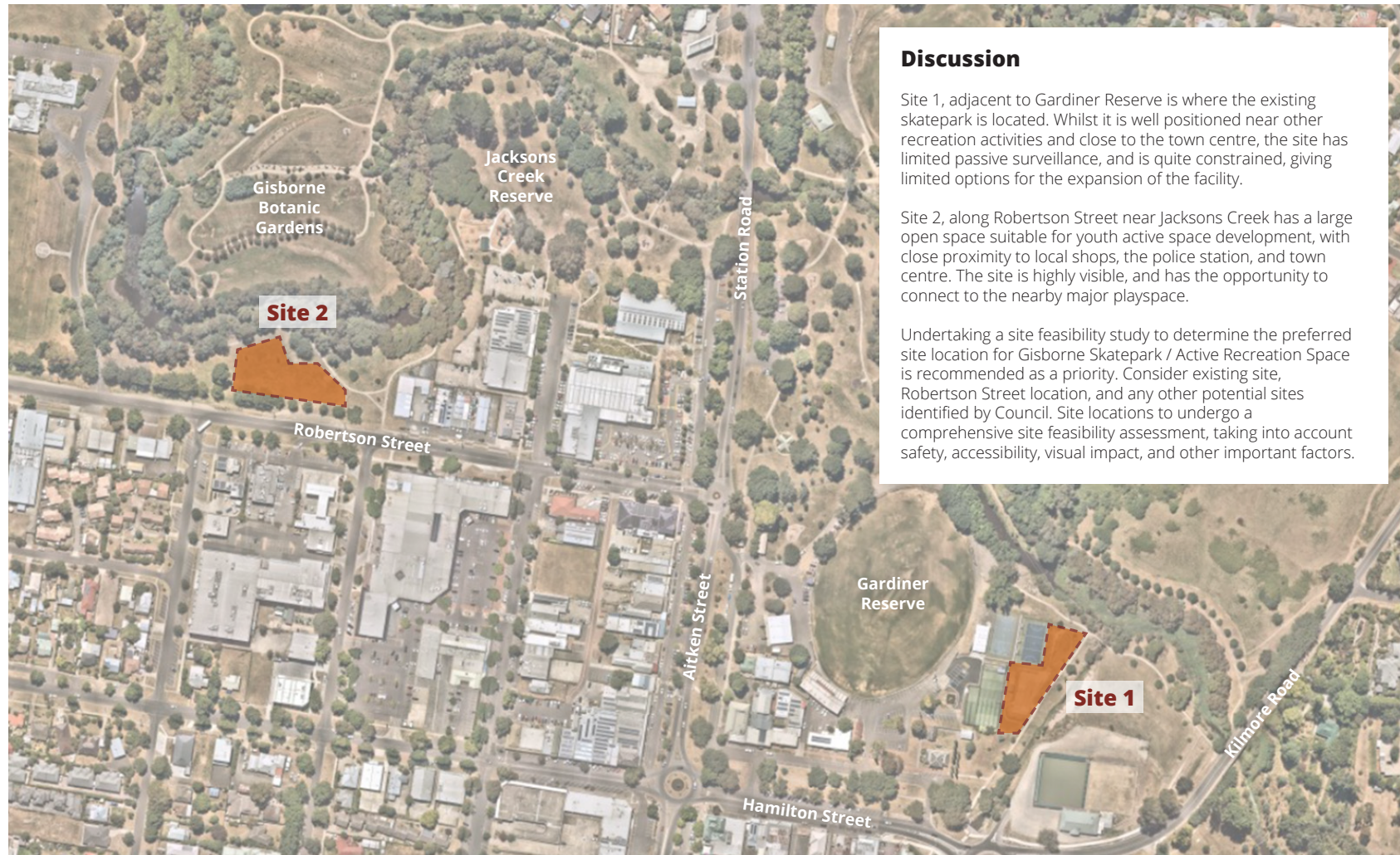
- Consultation, detail design, documentation, and construction of district level BMX track in Kyneton.
- Consultation, detail design, documentation, and construction of local level pump track in Lancefield.

Additional Facility Considerations

- Site feasibility, consultation, detail design, documentation, and construction of local level skate elements at smaller townships across the Shire subject to demand.
- Council to advocate with land managers (Parks Victoria and DECCA) where mountain biking currently occurs for provision of this sport.
- Consider development of skate spots as part of housing developments in the Shire. Smaller, more informal skate elements to complement or integrate in to other active spaces.



Gisborne Skatepark sites



Discussion

Site 1, adjacent to Gardiner Reserve is where the existing skatepark is located. Whilst it is well positioned near other recreation activities and close to the town centre, the site has limited passive surveillance, and is quite constrained, giving limited options for the expansion of the facility.

Site 2, along Robertson Street near Jacksons Creek has a large open space suitable for youth active space development, with close proximity to local shops, the police station, and town centre. The site is highly visible, and has the opportunity to connect to the nearby major playspace.

Undertaking a site feasibility study to determine the preferred site location for Gisborne Skatepark / Active Recreation Space is recommended as a priority. Consider existing site, Robertson Street location, and any other potential sites identified by Council. Site locations to undergo a comprehensive site feasibility assessment, taking into account safety, accessibility, visual impact, and other important factors.

Gisborne Skatepark Example Skate Facility



Woodend Skatepark sites

Discussion

Site 1 is where the existing skatepark is located, and well positioned near other active / public spaces. Future development of nearby Community Centre to be considered when skatepark design is undertaken to confirm opportunities to integrate the project planning. Timeline and co-ordination of Community Centre development with skatepark design to be confirmed by Council.



Woodend Skatepark Example Skate Facility



Discussion

Opportunity to develop and approx. 600m2 skate facility. Consider inclusion of sheltered seating, amenities and connection to the re-developed Community Centre at the existing skatepark site.

Future development of nearby Community Centre to be considered when skatepark design is undertaken. Timeline and co-ordination of Community Centre development with skatepark design to be confirmed by Council.

Indicative design only

Riddells Creek Skatepark sites

Discussion

The existing skate facility is located at site 1, next to the Scout Hall. The site is connected to the nearby recreation reserve, however it is slightly separated from other active areas, and hidden behind trees.

An alternate site location at the Lion's Park precinct was investigated for Riddells Creek skatepark, however it is no longer considered suitable due to over-development of the site. The potential location (Site 2) has been included on this page for reference.



Riddells Creek Skatepark Example Skate Facility



Kyneton Skatepark sites

Discussion

The existing skate facility is located at site 1, adjacent to the Showgrounds sports ovals. The oval nearest the skatepark is to be upgraded, so re-development of the skate facility in this location will need to work with this upgrade.

Site 2 is located to the west corner of the Botanic Gardens, near the playspace. Whilst this site is well located near other youth activities, there is not much opportunity for surveillance and there is poor access.



Kyneton Skatepark Example Skate Facility



Romsey Skatepark Example Skate Facility



Kyneton BMX Track



Discussion

The Kyneton BMX Track is the only facility of its typology in the Macedon Ranges Shire, and caters for BMX and mountain bike riders.

Responses to the survey indicated the facility is not well used, with only 3% of respondents using it weekly, and 11% using it monthly. 36% of respondents also found the facility to be in poor condition.

39% of survey respondents rated BMX Tracks as very important, so there is some calling for this type of facility in the shire.

As the track caters for wheeled sports users with larger wheels (BMX and larger bikes) there may not be a requirement for a sealed surface on the track, however the existing facility will require re-shaping, and considerations should be made to re-design to cater for recreational BMX opportunities, with inclusion of seating and other amenities.

Rollinson Reserve has been discussed as an alternate location for a BMX Track in Kyneton. An Equestrian Facilities Plan is currently being undertaken to determine the suitability of this alternate site location.

Lancefield Pump Track



Discussion

The Lancefield Pump Track is currently an un-sealed dirt track which was overgrown at the time of inspection.

The Lancefield skate facility is already large in relation to the town population, however as there is already a pump track as part of the facility, formalising and developing the track should be considered.

Providing a sealed surface for the pump track would allow use for riders with smaller wheels (scooter / skateboards), expanding the facility for all wheeled sport users. There is also opportunity for connection / integration with the skatepark, and addition of seating and other amenities.

Additional Spot Facilities

Discussion

Macedon, Malmsbury, Tylden, Darraweit Guim, and Bolinda are examples of smaller townships that can be serviced through the provision of skate and BMX facilities in the larger townships. The growth and demand for skate and BMX facilities in these smaller townships should continue to be monitored and subject to demand, skate elements may be incorporated into other developments within these townships.

More informal skate “spots”, with elements such as a ledges, rails, and smaller ramps could be considered in the area and other developments throughout the Shire.

These skate elements could be included as part of other active spaces such as ball courts, playspaces, and parkour areas.

Pop-up / temporary transportable facilities may be considered in the future. Any implementation would be subject to a business case through budget processes. The business case would need to consider where and when the facility can operate, safety considerations and equitable use across the shire.



Skatepark Cost Discussion

Due to the specialized nature of the work, and importance for high quality finishes and tolerances, there are a limited number of contractors that undertake skatepark construction. There have been considerable escalation of costs for the installation of skateparks in recent years, in-line with the market in general.

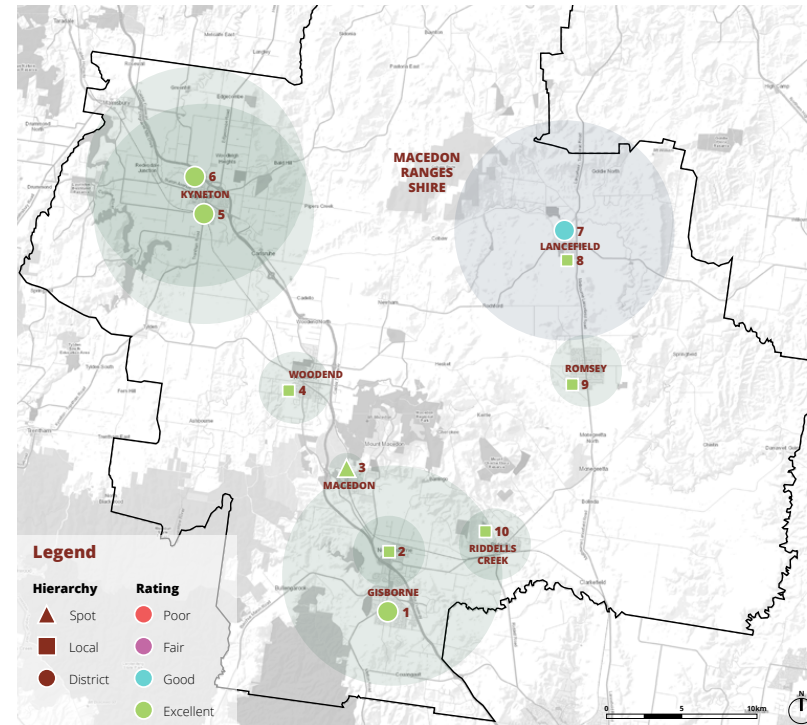
Different skatepark styles present varying construction complexities. Transitions and bowls require large areas of blended concrete, where plaza's may have more custom steel elements. Therefore the footprint cost rate for skateparks varies depending on the typologies, however an estimated footprint rate has been used as an initial guideline.

The shape and footprint required for the different skatepark typologies also varies, and the size of skateparks are not "set" like other sporting activities, therefore skatepark designs can be adjusted to suit budgets and sites accordingly. Guideline footprint areas for the facilities have been included in the adjacent table, however they are subject to change as the projects develop.



PLA'CE Macedon Ranges Shire Skate and BMX Strategy

Map of proposed facilities



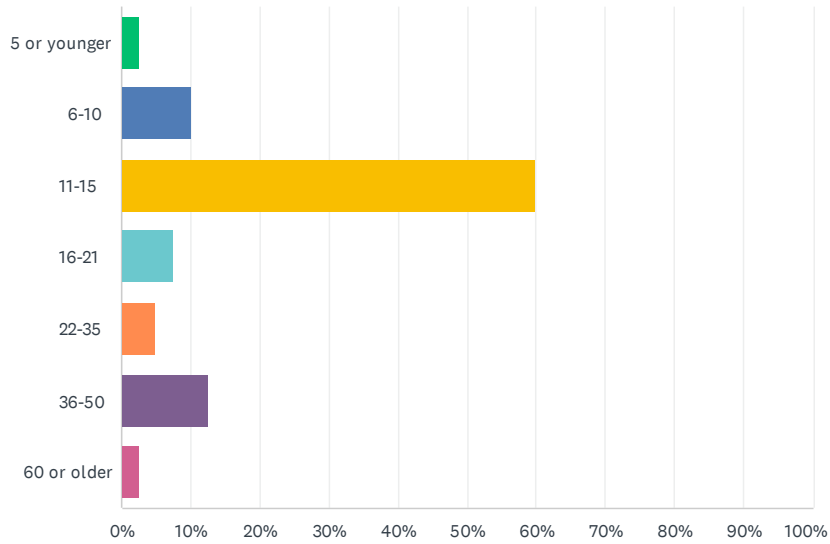
| Facility | Name | Size | Type | Rating | Hierarchy |
|----------|--------------------------|--------|------------|-----------|-----------|
| 1 | Gisborne Skatepark | 1200m2 | Skate | Excellent | District |
| 2 | New Gisborne Pump Track | 300m2 | Pump Track | Excellent | Local |
| 3 | Macedon Skate Spot | 150m2 | Skate | Excellent | Spot |
| 4 | Woodend Skatepark | 600m2 | Skate | Excellent | Local |
| 5 | Kyneton Skatepark | 1200m2 | Skate | Excellent | District |
| 6 | Kyneton BMX Track | 1500m2 | BMX Track | Excellent | District |
| 7 | Lancefield Skatepark | 990m2 | Skate | Good | District |
| 8 | Lancefield Pump Track | 300m2 | Pump Track | Excellent | Local |
| 9 | Romsey Skatepark | 690m2 | Skate | Excellent | Local |
| 10 | Riddells Creek Skatepark | 450m2 | Skate | Excellent | Local |

ROMSEY SKATEPARK UPGRADE

SurveyMonkey

Q1 What is your AGE?

Answered: 40 Skipped: 0



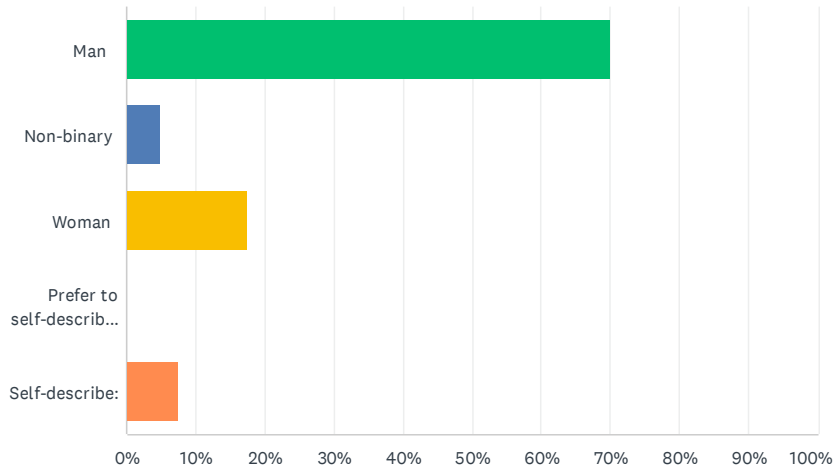
| ANSWER CHOICES | RESPONSES | |
|----------------|-----------|-----------|
| 5 or younger | 2.50% | 1 |
| 6-10 | 10.00% | 4 |
| 11-15 | 60.00% | 24 |
| 16-21 | 7.50% | 3 |
| 22-35 | 5.00% | 2 |
| 36-50 | 12.50% | 5 |
| 60 or older | 2.50% | 1 |
| TOTAL | | 40 |

ROMSEY SKATEPARK UPGRADE

SurveyMonkey

Q2 Gender: How do you IDENTIFY?

Answered: 40 Skipped: 0



| ANSWER CHOICES | RESPONSES |
|--------------------------------|-----------|
| Man | 70.00% 28 |
| Non-binary | 5.00% 2 |
| Woman | 17.50% 7 |
| Prefer to self-describe, below | 0.00% 0 |
| Self-describe: | 7.50% 3 |
| TOTAL | 40 |

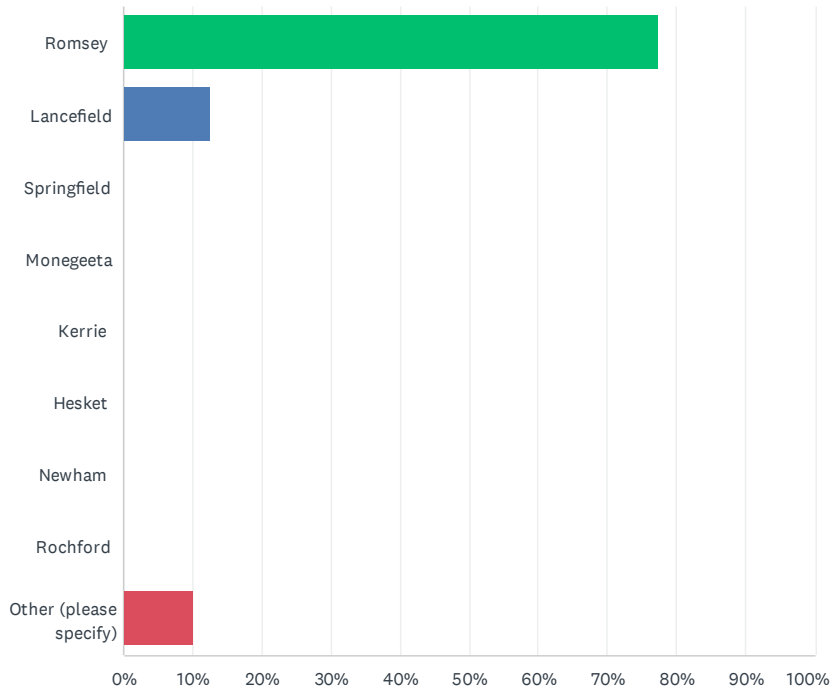
| # | SELF-DESCRIBE: | DATE |
|---|----------------|-------------------|
| 1 | Girl | 7/8/2022 10:08 AM |
| 2 | Boy | 7/8/2022 10:06 AM |
| 3 | Boy | 7/8/2022 10:03 AM |

ROMSEY SKATEPARK UPGRADE

SurveyMonkey

Q3 Where do you LIVE? (Suburb or City)

Answered: 40 Skipped: 0



| ANSWER CHOICES | RESPONSES |
|------------------------|-----------|
| Romsey | 77.50% 31 |
| Lancefield | 12.50% 5 |
| Springfield | 0.00% 0 |
| Monegeeta | 0.00% 0 |
| Kerrie | 0.00% 0 |
| Heskett | 0.00% 0 |
| Newham | 0.00% 0 |
| Rochford | 0.00% 0 |
| Other (please specify) | 10.00% 4 |
| TOTAL | 40 |

| # | OTHER (PLEASE SPECIFY) | DATE |
|---|------------------------|--------------------|
| 1 | Woodend | 7/13/2022 10:21 AM |
| 2 | Chintin | 7/8/2022 10:19 AM |
| 3 | Gisborne | 5/31/2022 6:58 PM |
| 4 | Kilmore | 5/31/2022 6:36 PM |

ROMSEY SKATEPARK UPGRADE

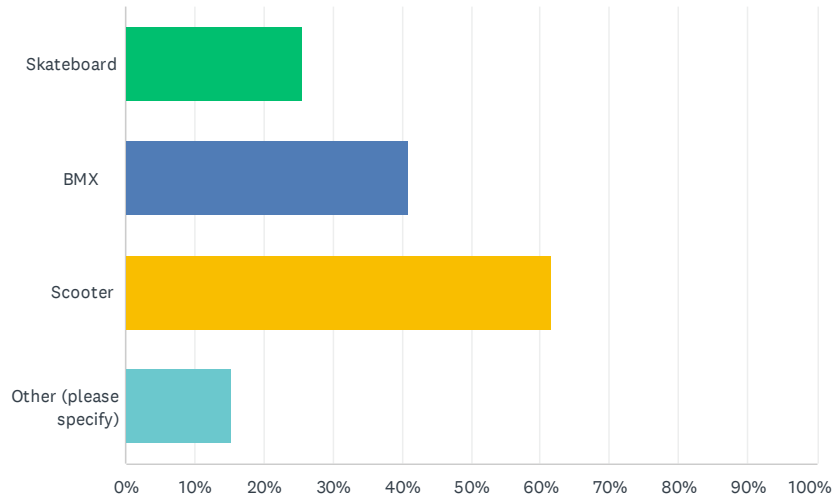
SurveyMonkey

ROMSEY SKATEPARK UPGRADE

SurveyMonkey

Q4 What do you RIDE?

Answered: 39 Skipped: 1



| ANSWER CHOICES | RESPONSES |
|------------------------|-----------|
| Skateboard | 25.64% 10 |
| BMX | 41.03% 16 |
| Scooter | 61.54% 24 |
| Other (please specify) | 15.38% 6 |
| Total Respondents: 39 | |

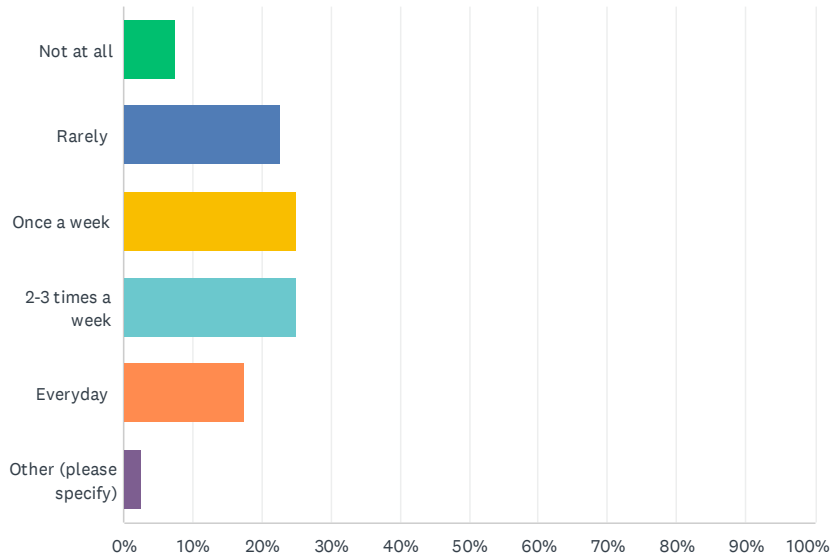
| # | OTHER (PLEASE SPECIFY) | DATE |
|---|------------------------|-------------------|
| 1 | Bike | 7/8/2022 10:21 AM |
| 2 | Mountain bike | 7/8/2022 10:06 AM |
| 3 | Mountain bike | 7/8/2022 10:03 AM |
| 4 | Bike | 6/1/2022 6:13 PM |
| 5 | Mountain bike | 5/31/2022 6:38 PM |
| 6 | Roller Skates | 5/31/2022 6:35 PM |

ROMSEY SKATEPARK UPGRADE

SurveyMonkey

Q5 How OFTEN do you use the skatepark?

Answered: 40 Skipped: 0



| ANSWER CHOICES | RESPONSES |
|------------------------|-----------|
| Not at all | 7.50% 3 |
| Rarely | 22.50% 9 |
| Once a week | 25.00% 10 |
| 2-3 times a week | 25.00% 10 |
| Everyday | 17.50% 7 |
| Other (please specify) | 2.50% 1 |
| TOTAL | 40 |

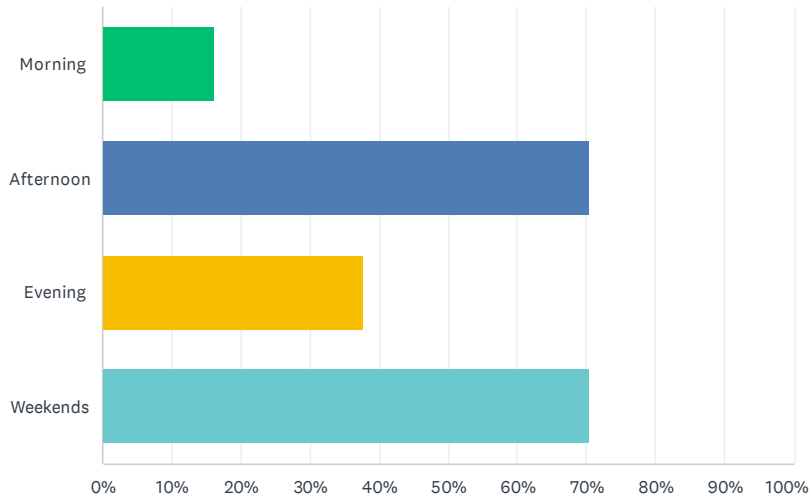
| # | OTHER (PLEASE SPECIFY) | DATE |
|---|------------------------|-------------------|
| 1 | Use to use it a lot | 5/31/2022 8:55 PM |

ROMSEY SKATEPARK UPGRADE

SurveyMonkey

Q6 WHEN do you use the skatepark?

Answered: 37 Skipped: 3



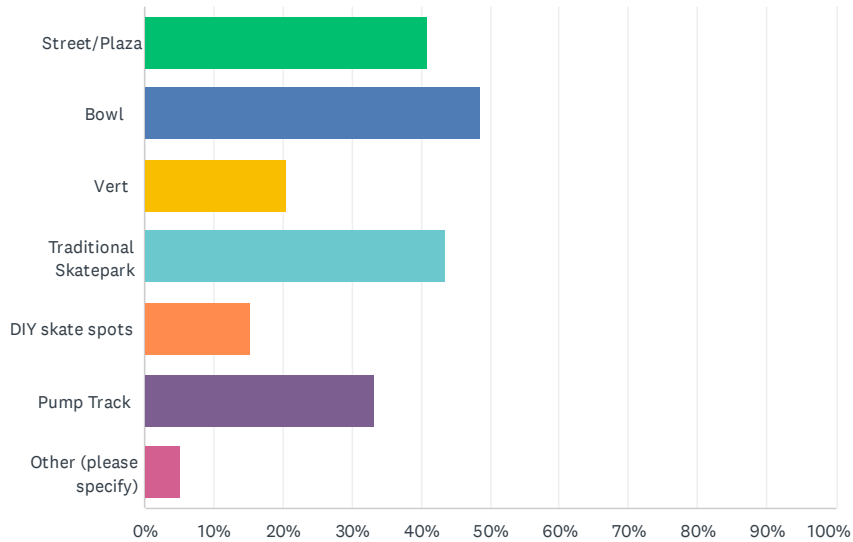
| ANSWER CHOICES | RESPONSES | |
|-----------------------|-----------|----|
| Morning | 16.22% | 6 |
| Afternoon | 70.27% | 26 |
| Evening | 37.84% | 14 |
| Weekends | 70.27% | 26 |
| Total Respondents: 37 | | |

ROMSEY SKATEPARK UPGRADE

SurveyMonkey

Q7 What type of TERRAIN do you like?

Answered: 39 Skipped: 1



| ANSWER CHOICES | RESPONSES |
|------------------------|-----------|
| Street/Plaza | 41.03% 16 |
| Bowl | 48.72% 19 |
| Vert | 20.51% 8 |
| Traditional Skatepark | 43.59% 17 |
| DIY skate spots | 15.38% 6 |
| Pump Track | 33.33% 13 |
| Other (please specify) | 5.13% 2 |
| Total Respondents: 39 | |

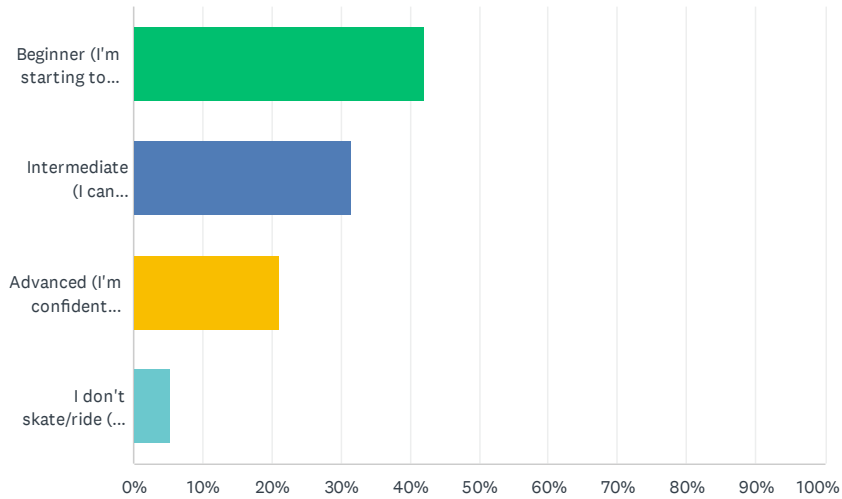
| # | OTHER (PLEASE SPECIFY) | DATE |
|---|------------------------|-------------------|
| 1 | Dirt | 5/31/2022 8:02 PM |
| 2 | Dont really mind | 5/31/2022 6:36 PM |

ROMSEY SKATEPARK UPGRADE

SurveyMonkey

Q8 Rate your SKILL level

Answered: 38 Skipped: 2



| ANSWER CHOICES | RESPONSES | |
|---|-----------|-----------|
| Beginner (I'm starting to roll around and drop in on small ramps) | 42.11% | 16 |
| Intermediate (I can air/ollie over hips or slide/grind the ledges and rails) | 31.58% | 12 |
| Advanced (I'm confident riding and can do several grinds, flips, whips, pump around a bowl, etc.) | 21.05% | 8 |
| I don't skate/ride (I just use the space to hang out and/or to watch the users) | 5.26% | 2 |
| TOTAL | | 38 |

ROMSEY SKATEPARK UPGRADE

SurveyMonkey

Q9 What do you LIKE about the existing skatepark?

Answered: 34 Skipped: 6

| # | RESPONSES | DATE |
|----|--|--------------------|
| 1 | The small 1/4 s are fun. I like the flat bar too | 7/26/2022 10:41 AM |
| 2 | Nothing | 7/13/2022 10:21 AM |
| 3 | Quarter pipe, ledges | 7/8/2022 10:24 AM |
| 4 | The ramps | 7/8/2022 10:21 AM |
| 5 | The park next to it, the bathrooms | 7/8/2022 10:19 AM |
| 6 | You can start at the top of roll in then you can go down and clear hump and then go up BIG | 7/8/2022 10:16 AM |
| 7 | Nothing | 7/8/2022 10:14 AM |
| 8 | Ramps | 7/8/2022 10:11 AM |
| 9 | The box and the hump | 7/8/2022 10:10 AM |
| 10 | The little hump | 7/8/2022 10:08 AM |
| 11 | The hump, the ramp without a lip (coping) | 7/8/2022 10:06 AM |
| 12 | The big quarter pipe The hump | 7/8/2022 10:03 AM |
| 13 | Seats | 7/8/2022 10:01 AM |
| 14 | Nothing it's too small | 6/1/2022 3:45 PM |
| 15 | I like the box and the hump they are very good for learning new tricks | 6/1/2022 7:46 AM |
| 16 | How it has the box in the middle | 6/1/2022 7:36 AM |
| 17 | The ramps are okay | 5/31/2022 10:31 PM |
| 18 | The ramps | 5/31/2022 8:55 PM |
| 19 | The big quarter | 5/31/2022 8:12 PM |
| 20 | The park | 5/31/2022 8:02 PM |
| 21 | nothing the big quarters alright i guess | 5/31/2022 7:30 PM |
| 22 | Great spot to be with mates | 5/31/2022 6:58 PM |
| 23 | the location the new trees planted | 5/31/2022 6:53 PM |
| 24 | It's not bad | 5/31/2022 6:43 PM |
| 25 | It's small and fun to start a hobby and get pretty good at it | 5/31/2022 6:38 PM |
| 26 | It's a good place to ride and chill with my friends | 5/31/2022 6:38 PM |
| 27 | Its fun | 5/31/2022 6:36 PM |
| 28 | The box | 5/31/2022 6:35 PM |
| 29 | It's right next to school and there are toilets | 5/31/2022 6:35 PM |
| 30 | The box and hump | 5/31/2022 6:32 PM |
| 31 | that its here | 5/31/2022 6:31 PM |
| 32 | Little hump jump | 5/31/2022 6:31 PM |
| 33 | That it is better than nothing | 5/31/2022 11:39 AM |
| 34 | Open and friendly meeting place | 5/31/2022 11:35 AM |

ROMSEY SKATEPARK UPGRADE

SurveyMonkey

Q10 What do you DISLIKE about the existing skatepark?

Answered: 35 Skipped: 5

| # | RESPONSES | DATE |
|----|--|--------------------|
| 1 | There isn't much creative lines due to it being a prefab skatepark . | 7/26/2022 10:41 AM |
| 2 | Everything | 7/13/2022 10:21 AM |
| 3 | Rails, kicker ramp | 7/8/2022 10:24 AM |
| 4 | The size | 7/8/2022 10:21 AM |
| 5 | The lack of slushies | 7/8/2022 10:19 AM |
| 6 | Not big enough, need more jump and fill up the gaps | 7/8/2022 10:16 AM |
| 7 | Everything | 7/8/2022 10:14 AM |
| 8 | Too small | 7/8/2022 10:11 AM |
| 9 | The cracks | 7/8/2022 10:10 AM |
| 10 | Not a lot to do for younger kids who are there with older siblings | 7/8/2022 10:08 AM |
| 11 | Not enough scooter stuff | 7/8/2022 10:06 AM |
| 12 | The rails | 7/8/2022 10:03 AM |
| 13 | Always glass everywhere | 7/8/2022 10:01 AM |
| 14 | Lack of lighting at night, anti social behaviour, proximity to the school leads to vandalism, lack of policing | 6/4/2022 3:59 PM |
| 15 | Everything it's so outdated | 6/1/2022 3:45 PM |
| 16 | The grinds are very sticky | 6/1/2022 7:46 AM |
| 17 | The surface | 6/1/2022 7:36 AM |
| 18 | It's very outdated and small, not enough areas for both young and old to use without there being incidents of people running into each other. Need intermediate and advanced areas. And extra lighting | 5/31/2022 10:31 PM |
| 19 | Not big enough, old, dirty and not enough ramps | 5/31/2022 8:55 PM |
| 20 | It's not big enough | 5/31/2022 8:12 PM |
| 21 | The seat area | 5/31/2022 8:02 PM |
| 22 | small | 5/31/2022 7:30 PM |
| 23 | All old ramps and nothing to do | 5/31/2022 6:58 PM |
| 24 | the rubbish the material the ramps | 5/31/2022 6:53 PM |
| 25 | It's doesn't have differ types of ramps really. It has old quarter ramps | 5/31/2022 6:43 PM |
| 26 | The graffiti | 5/31/2022 6:38 PM |
| 27 | It's too small. Needs more stuff | 5/31/2022 6:38 PM |
| 28 | The trash left around | 5/31/2022 6:36 PM |
| 29 | The cracks everywhere | 5/31/2022 6:35 PM |
| 30 | The big kids who push me around and the rough concrete | 5/31/2022 6:35 PM |
| 31 | Not well looked after | 5/31/2022 6:32 PM |
| 32 | that all the concrete has been dug up before ramps so its harder to ride and not enough room on top of the big quarter not enough room back to do tricks on | 5/31/2022 6:31 PM |
| 33 | Holes and concrete | 5/31/2022 6:31 PM |

ROMSEY SKATEPARK UPGRADE

SurveyMonkey

| | | |
|----|---|--------------------|
| 34 | Frequently has broken glass in vicinity Toilets are often damaged or not maintained Groups of teens harassing /intimidating others and sometimes preventing entry to toilets. Drug deals taking place at toilets No CCTV to monitor any of the above. | 5/31/2022 11:39 AM |
| 35 | Brocken glass | 5/31/2022 11:35 AM |

ROMSEY SKATEPARK UPGRADE

SurveyMonkey

Q11 What does the existing skatepark NEED?

Answered: 33 Skipped: 7

| # | RESPONSES | DATE |
|----|---|--------------------|
| 1 | Kicker to rail, a hip , bank with a curb ,small fun spine ramp | 7/26/2022 10:41 AM |
| 2 | New facelift | 7/13/2022 10:21 AM |
| 3 | More space | 7/8/2022 10:21 AM |
| 4 | Somewhere close by to get slushies, seating | 7/8/2022 10:19 AM |
| 5 | Pump track and bowl | 7/8/2022 10:16 AM |
| 6 | A lot of things | 7/8/2022 10:14 AM |
| 7 | Bigger area | 7/8/2022 10:11 AM |
| 8 | Path onto it, drinking fountain, no cracks | 7/8/2022 10:10 AM |
| 9 | More easier stuff like Lancefield skatepark. We travel from Romsey to use Lancefield skatepark. | 7/8/2022 10:08 AM |
| 10 | Bowl, pump track, bubble tap to drink from, shade, bunny hop trail for scooters like at Lancefield skatepark | 7/8/2022 10:06 AM |
| 11 | Pump track, flow area, bowl, drinking fountain, shade, seats, bigger landing | 7/8/2022 10:03 AM |
| 12 | More chairs More bins | 7/8/2022 10:01 AM |
| 13 | CCTV cameras, lights, regular toilet maintenance | 6/4/2022 3:59 PM |
| 14 | More seating, more facilities | 6/1/2022 3:45 PM |
| 15 | A bigger area with more types of ramps so more people can fit on the skatepark and there will be more things to do | 6/1/2022 7:46 AM |
| 16 | An update | 6/1/2022 7:36 AM |
| 17 | Area for both advanced and beginners | 5/31/2022 10:31 PM |
| 18 | It needs to be bigger, new, have more ramps and looks appealing | 5/31/2022 8:55 PM |
| 19 | More ramps and jumps | 5/31/2022 8:12 PM |
| 20 | Bigger area, less cluster around the seat area and bathrooms | 5/31/2022 8:02 PM |
| 21 | more stuff to ride | 5/31/2022 7:30 PM |
| 22 | new ramps n all of it done up | 5/31/2022 6:58 PM |
| 23 | more places to sit larger skate area playground area more shelter | 5/31/2022 6:53 PM |
| 24 | Some bike tracks | 5/31/2022 6:38 PM |
| 25 | More ramps a bowl and a quarter pipe | 5/31/2022 6:38 PM |
| 26 | Bmx tracks and bins | 5/31/2022 6:36 PM |
| 27 | Fixing | 5/31/2022 6:35 PM |
| 28 | Smooth concrete, shade for summver | 5/31/2022 6:35 PM |
| 29 | A upgrade | 5/31/2022 6:32 PM |
| 30 | to fill in the concrete before the ramps so we dont fall and hurt our selves. Need to add more shade and add water fountains. New ramps because current has been graffitied | 5/31/2022 6:31 PM |
| 31 | Bowl more half and quarter pipes jumps | 5/31/2022 6:31 PM |
| 32 | More variety of OTHER play ground equipment as it does not take many kids to fill skate area to capacity | 5/31/2022 11:39 AM |

ROMSEY SKATEPARK UPGRADE

SurveyMonkey

33

Basketball area

5/31/2022 11:35 AM

ROMSEY SKATEPARK UPGRADE

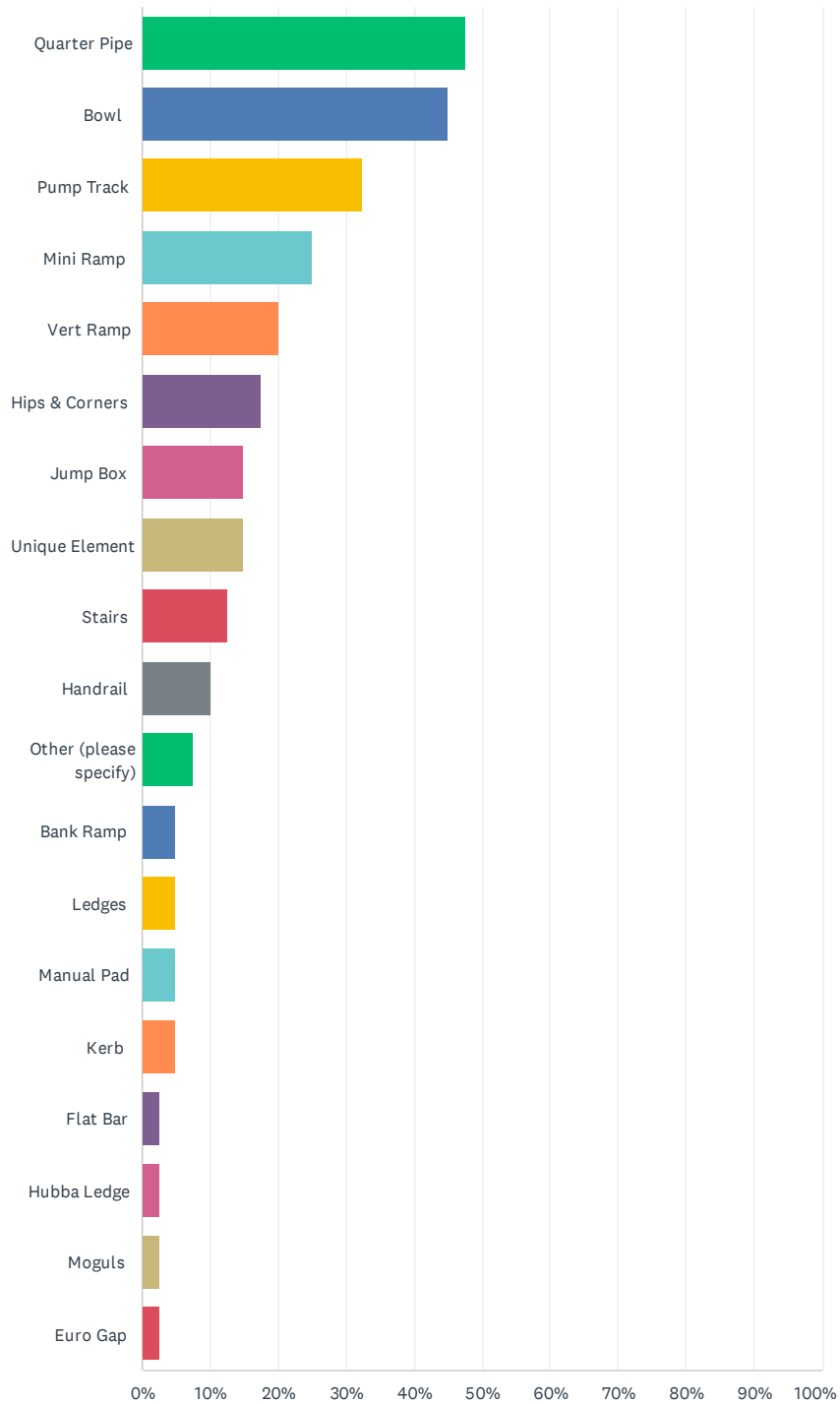
SurveyMonkey

Q12 TOP 3 elements for a NEW skatepark.

Answered: 40 Skipped: 0

ROMSEY SKATEPARK UPGRADE

SurveyMonkey



ROMSEY SKATEPARK UPGRADE

SurveyMonkey

| ANSWER CHOICES | RESPONSES | |
|------------------------|-----------|----|
| Quarter Pipe | 47.50% | 19 |
| Bowl | 45.00% | 18 |
| Pump Track | 32.50% | 13 |
| Mini Ramp | 25.00% | 10 |
| Vert Ramp | 20.00% | 8 |
| Hips & Corners | 17.50% | 7 |
| Jump Box | 15.00% | 6 |
| Unique Element | 15.00% | 6 |
| Stairs | 12.50% | 5 |
| Handrail | 10.00% | 4 |
| Other (please specify) | 7.50% | 3 |
| Bank Ramp | 5.00% | 2 |
| Ledges | 5.00% | 2 |
| Manual Pad | 5.00% | 2 |
| Kerb | 5.00% | 2 |
| Flat Bar | 2.50% | 1 |
| Hubba Ledge | 2.50% | 1 |
| Moguls | 2.50% | 1 |
| Euro Gap | 2.50% | 1 |
| Total Respondents: 40 | | |

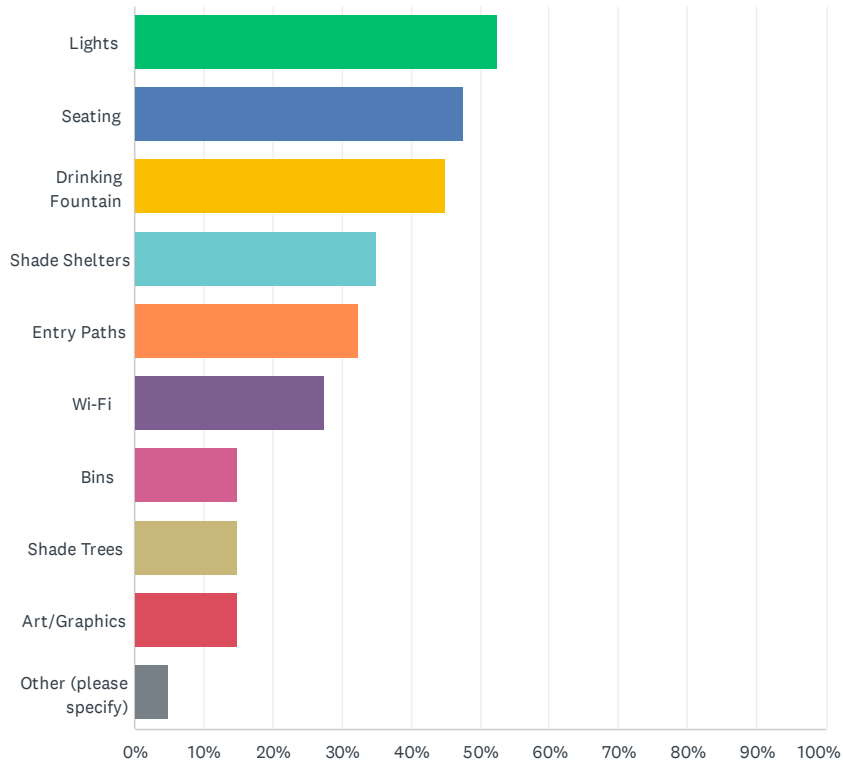
| # | OTHER (PLEASE SPECIFY) | DATE |
|---|------------------------|-------------------|
| 1 | Lights | 6/4/2022 3:59 PM |
| 2 | Bmx track | 5/31/2022 6:36 PM |
| 3 | Flat surface | 5/31/2022 6:35 PM |

ROMSEY SKATEPARK UPGRADE

SurveyMonkey

Q13 TOP 3 things to make the skatepark BETTER?

Answered: 40 Skipped: 0



| ANSWER CHOICES | RESPONSES | |
|------------------------|-----------|----|
| Lights | 52.50% | 21 |
| Seating | 47.50% | 19 |
| Drinking Fountain | 45.00% | 18 |
| Shade Shelters | 35.00% | 14 |
| Entry Paths | 32.50% | 13 |
| Wi-Fi | 27.50% | 11 |
| Bins | 15.00% | 6 |
| Shade Trees | 15.00% | 6 |
| Art/Graphics | 15.00% | 6 |
| Other (please specify) | 5.00% | 2 |
| Total Respondents: 40 | | |

| # | OTHER (PLEASE SPECIFY) | DATE |
|---|------------------------|------------------|
| 1 | CCTV | 6/4/2022 3:59 PM |

| ROMSEY SKATEPARK UPGRADE | | SurveyMonkey |
|--------------------------|---------------------|------------------|
| 2 | Exercises equipment | 6/1/2022 6:13 PM |

ROMSEY SKATEPARK UPGRADE

SurveyMonkey

Q14 Any other ideas that we should consider for a NEW skatepark?

Answered: 24 Skipped: 16

| # | RESPONSES | DATE |
|----|--|--------------------|
| 1 | Having an interesting obstacle would be great | 7/26/2022 10:41 AM |
| 2 | Different areas | 7/8/2022 10:19 AM |
| 3 | Nice garden around it | 7/8/2022 10:16 AM |
| 4 | I don't know | 7/8/2022 10:14 AM |
| 5 | Keep it fairly clean | 7/8/2022 10:11 AM |
| 6 | No cracks in concrete | 7/8/2022 10:10 AM |
| 7 | More stuff for younger riders. They are there just as much as the older kids. | 7/8/2022 10:08 AM |
| 8 | Please make more stuff for scooters and easier stuff for beginners | 7/8/2022 10:06 AM |
| 9 | Fun colours, areas for little kids to ride separate from big kids/adults | 7/8/2022 10:03 AM |
| 10 | Get Grind Skate from Kyneton to design and construct | 6/3/2022 10:07 AM |
| 11 | Making the skatepark smoother because there are a lot of breaks In The concrete at the bottom of the ramps | 6/1/2022 7:46 AM |
| 12 | No not really | 6/1/2022 7:36 AM |
| 13 | Ensure it's cleaned more frequently and kept up to date | 5/31/2022 10:31 PM |
| 14 | Make it bigger | 5/31/2022 8:55 PM |
| 15 | Make it bigger but also make use of the grass area, but not for the skatepark | 5/31/2022 8:02 PM |
| 16 | No | 5/31/2022 6:43 PM |
| 17 | Not really | 5/31/2022 6:38 PM |
| 18 | Drinking fountain and a bowl | 5/31/2022 6:38 PM |
| 19 | The lancefield ground | 5/31/2022 6:35 PM |
| 20 | Shade, toilets and smooth surface. We go to Lancefield more as it's better for skates and scooters | 5/31/2022 6:35 PM |
| 21 | Make it for more Advanced riders | 5/31/2022 6:32 PM |
| 22 | to add more room to the quarters to do tricks | 5/31/2022 6:31 PM |
| 23 | Better concrete | 5/31/2022 6:31 PM |
| 24 | Other playing equipment so parents can have older kids skating and younger kids in tow also entertained on other equipment like slides, see saws, water spouts etc Security surveillance | 5/31/2022 11:39 AM |

ROMSEY SKATEPARK UPGRADE

SurveyMonkey

Q15 Want to stay up to date with PROGRESS? Enter your email address below:

Answered: 14 Skipped: 26

| # | RESPONSES | DATE |
|----|------------------------------|--------------------|
| 1 | seamusmenner@gmail.com | 7/8/2022 10:24 AM |
| 2 | dragonlordlol08@gmail.com | 7/8/2022 10:21 AM |
| 3 | crisiopad@hotmail.com | 7/8/2022 10:19 AM |
| 4 | cofamily3434@gmail.com | 7/8/2022 10:16 AM |
| 5 | Spencer.l.pratto8@gmail.com | 7/8/2022 10:11 AM |
| 6 | kate.hindson@yahoo.com.au | 7/8/2022 10:06 AM |
| 7 | Pentupsv6@gmail.com | 6/1/2022 3:45 PM |
| 8 | Zade_mezza@yahoo.com | 6/1/2022 7:36 AM |
| 9 | Tarahoyleservice@outlook.com | 5/31/2022 10:31 PM |
| 10 | brookssuzanne62@gmail.com | 5/31/2022 7:30 PM |
| 11 | hw77631@icloud.com | 5/31/2022 6:53 PM |
| 12 | oscarJKA@outlook.com | 5/31/2022 6:38 PM |
| 13 | jettliddicoat@gmail.com | 5/31/2022 6:31 PM |
| 14 | Karen.box@bigpond.com | 5/31/2022 6:31 PM |