

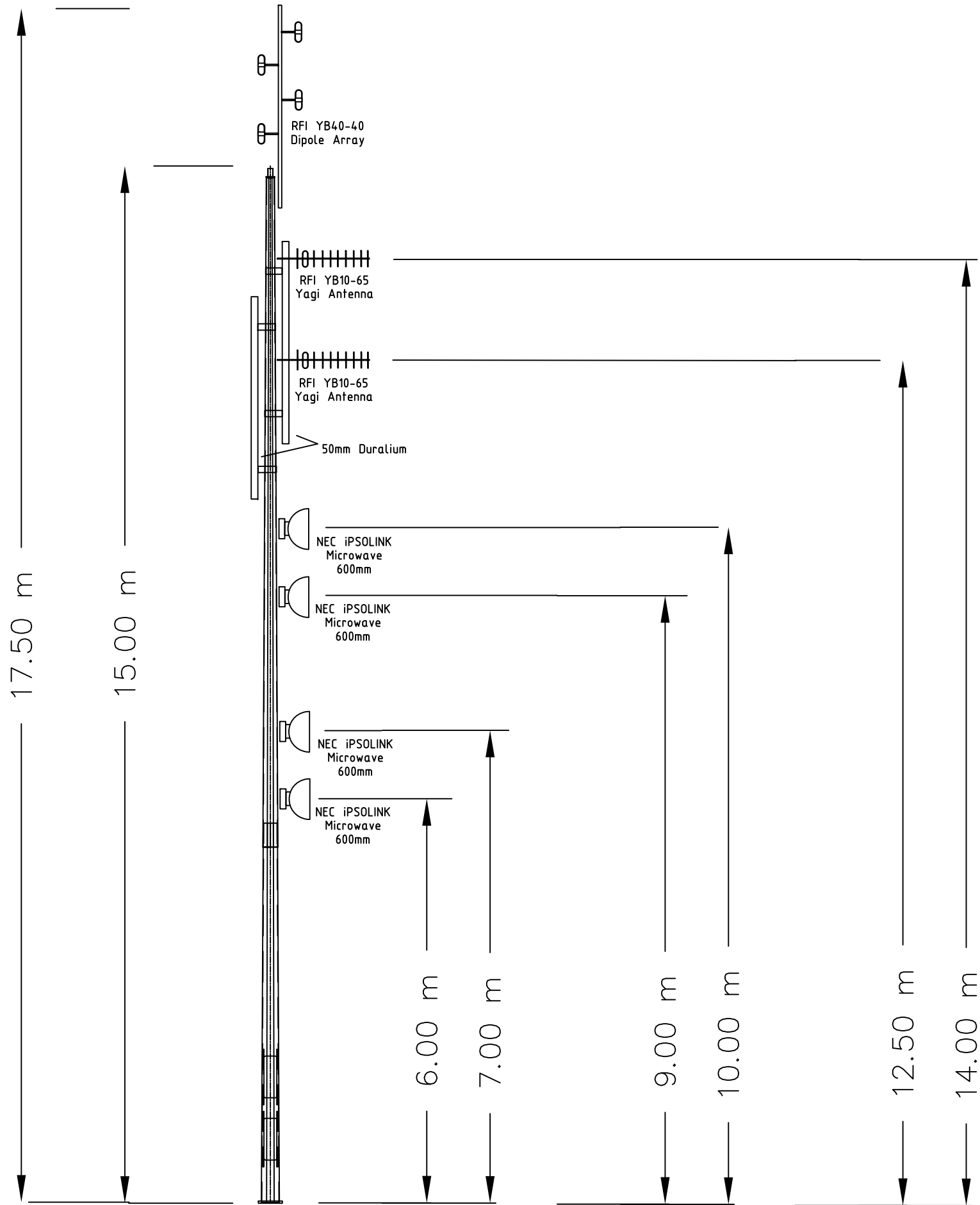
PE.1 ATTACHMENT 3

REPLACEMENT TELECOMMUNICATIONS TOWER | MOUNT GISBORNE,
GISBORNE

Appendix C Telecommunications Tower
Plans prepared by Wireless
Network Ballarat

WESTERN REGION WATER CORPORATION

Advertised



REV.	REVISION DETAILS	BY	CHECKED	APPROVED	DATE	ORIG. DRAWN
A	Updated from Original for WNB use	WNB	PD	PD	11 Jan 2016	M Saunderson
B	Submitted to Western Water for approval	PD	PD		22 Apr 2020	
						DATE
						DWG CHECKED
						PROJECT NO.
						PROJECT MNGR
						DRW TEMPLATE
						N/A
						SCALE:
						NTS
						SHEET
						SIZE: A3



TITLE:
Western Water
Proposed Antenna Location
Mouln Gisborne

Client Dwg No: DWG 5000 R1_0	
PROJECT ID:	
SHT No: 1	REV: B

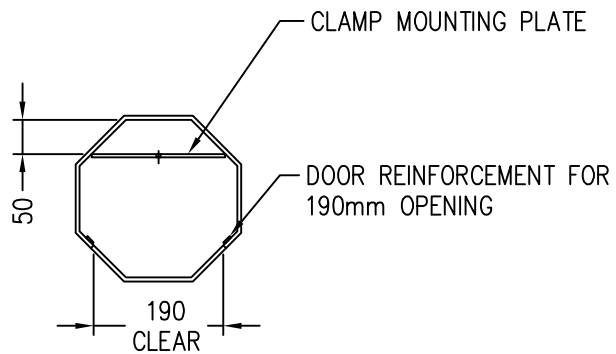
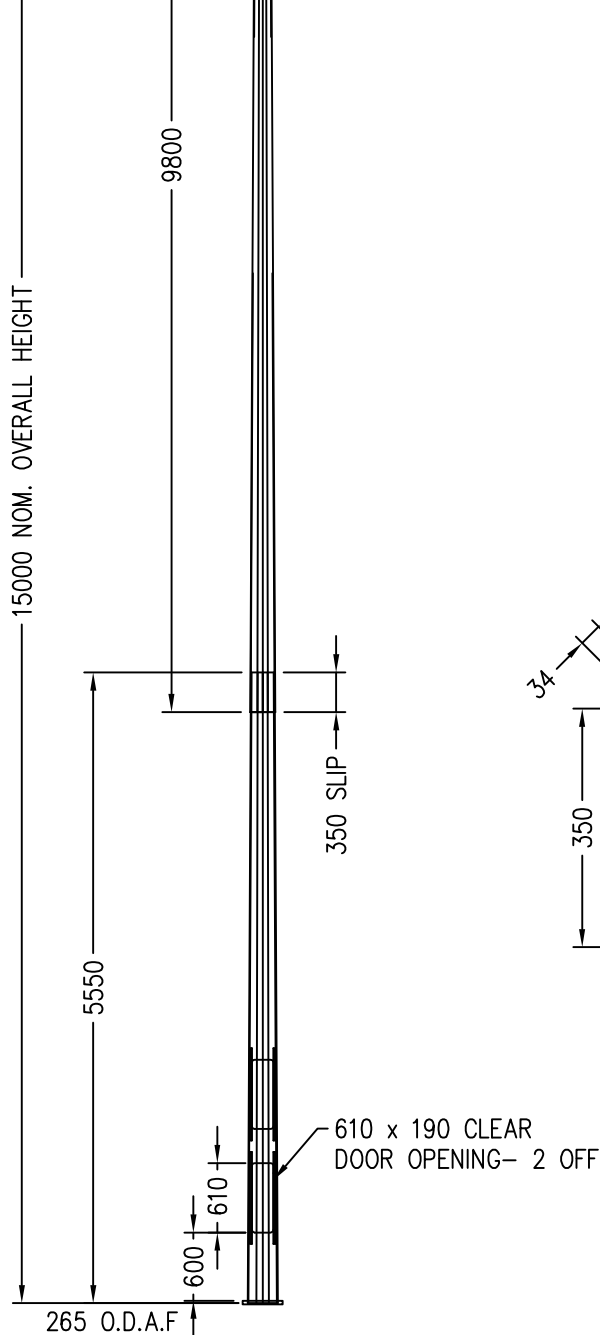
MACEDON RANGES SHIRE COUNCIL
COPYRIGHT AND DISCLAIMER INFORMATION

This copied document is made available for the sole purpose of enabling its consideration and review as part of a planning process under the Planning and Environment Act 1987.
The document must not be used for any purpose which may breach any copyright.

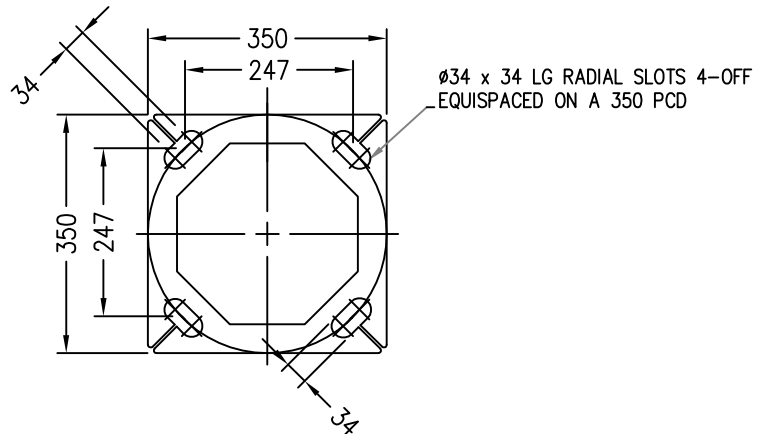
MAX. TOP WEIGHT: 200kg

MAX. SAIL AREA IN REGION A
TERRAIN CATEGORY-2: 1.80m²
TERRAIN CATEGORY-2.5: 2.20m²
TERRAIN CATEGORY-3: 2.71m²

UTIMATE STATE BASE MOMENT: 62.4kNm
UTIMATE STATE BASE SHEAR: 6.3kNm



DOOR CLEARANCE
SCALE 1:6



BASEPLATE FOR 4-M30@350
SCALE 1:6

NOTES:

- POLES DESIGNED TO BCA, AS 4100:1998, AS/NZS 1170:2:2002, AS 1798:1992, AS/NZS 4676:2000, AS/NZS 4677:2000
- HOT ROLLED STEEL FLAT PRODUCTS TO CONFORM TO AS 1594
- HOT ROLLED STEEL BARS AND SECTIONS TO CONFORM TO AS 3679.1
- HOT ROLLED STEEL PLATES TO CONFORM TO AS 3678: 2011
- COLD FORMED STRUCTURAL STEEL HOLLOW SECTION TO CONFORM TO AS 1163: 2009
- WELDING OF STEEL STRUCTURES TO CONFORM TO AS/NZS 1554.1:2004
- ALL STEEL TO BE FULLY HOT DIP GALVANISED AFTER FABRICATION TO AS/NZS 4680

DRAWING APPROVED BY:

SIGNATURE:

DATE:

MANUFACTURING WILL NOT COMMENCE UNTIL APPROVED DRAWINGS ARE RECEIVED

ALL DIMENSIONS ARE IN MM. DO NOT SCALE

A	20/4/20	IFA			

COPYRIGHT
THIS DRAWING REMAINS
THE PROPERTY OF
COSLEE HEAVY METAL
FABRICATORS PTY. LTD.
AND MUST NOT BE
COPIED WITHOUT
WRITTEN PERMISSION

COSLEE
Poles & Fabrication

12-18 Industrial Avenue Thomastown, VIC 3074
Ph: +61 3 9557 2011, Web: www.coslee.com.au

15.0M TAPERED OCTAGONAL
HEAVY DUTY POLE

HOT DIP GALVANISED

Project	Drawn By	Scale	Date	Drawn No.	Rev No.	Height	Ref No.	Part No.	Rev
	SR	AS SURVEY	10/4/20			125 m	T08PH15	A4	A