

MACEDON RANGES SHIRE COUNCIL
COPYRIGHT AND DISCLAIMER INFORMATION

This copied document is made available for the sole purpose of enabling its consideration and review as part of a planning process under the Planning and Environment Act 1987.
The document must not be used for any purpose which may breach any copyright.

Advertised

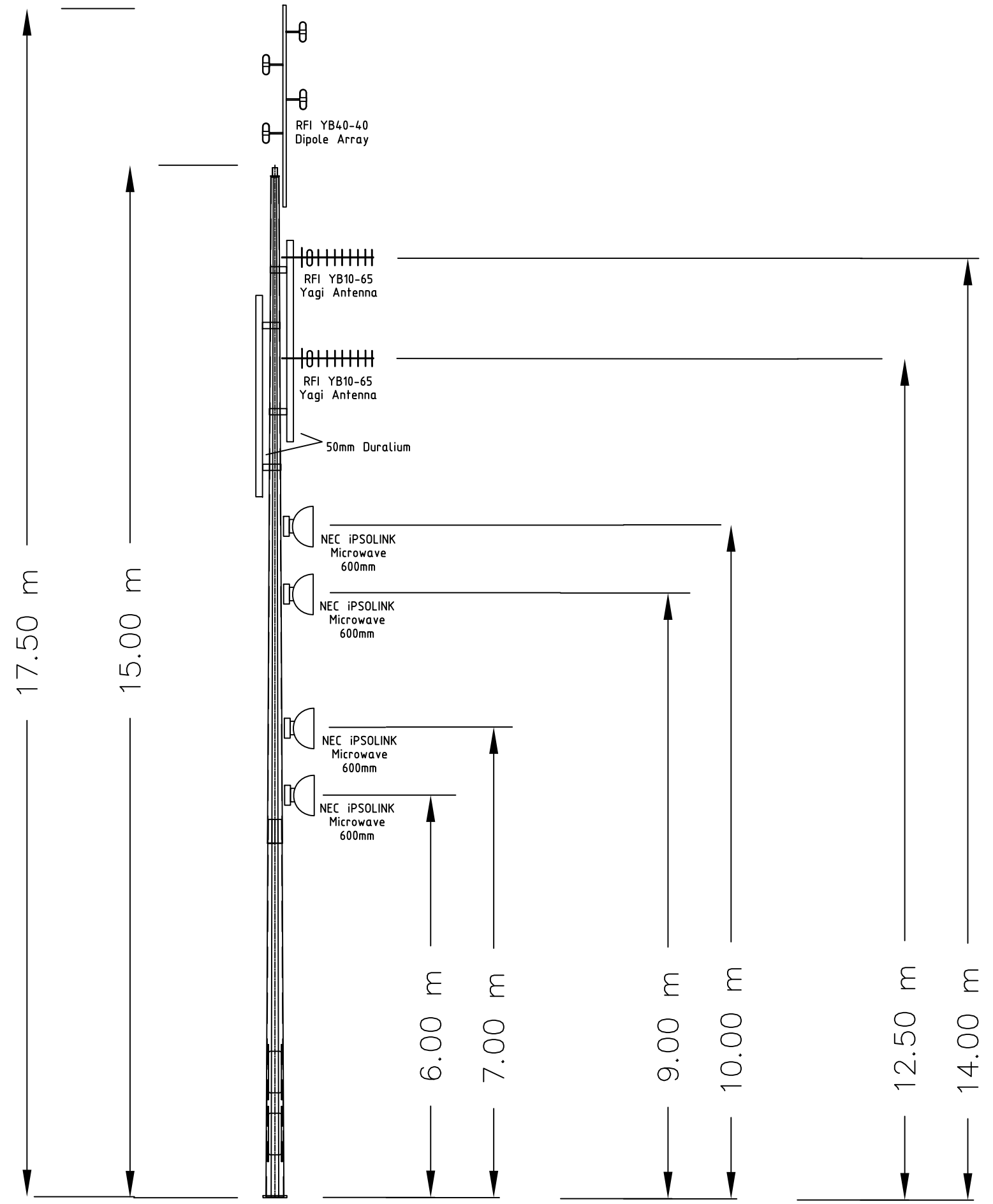


REPLACEMENT TELECOMMUNICATIONS TOWER | MOUNT GISBORNE,
GISBORNE

Appendix C Telecommunications Tower
Plans prepared by Wireless
Network Ballarat

WESTERN REGION WATER CORPORATION

Advertised



REV.	REVISION DETAILS	BY	CHECKED	APPROVED	DATE	ORIG. DRAWN
A	Updated from Original for WNB use	WNB	PD	PD	11 Jan 2016	M Saunderson
B	Submitted to Western Water for approval	PD	PD		22 Apr 2020	
						DATE
						DWG CHECKED
						PROJECT NO.
						PROJECT MNGR
						DRW TEMPLATE
						SCALE: NTS
						SHEET SIZE: A3



Wireless Network
Communications & SCADA
Systems Integrators



WESTERN WATER

TITLE:		Client Dwg No:
Western Water Proposed Antenna Location		DWG 5000 R1_0
PROJECT ID:		
SHT No:	REV:	
1	B	

