



DESIGN INTENT

The catalyst behind the design to Willowbank Road Activity Centre is to provide an inviting space for local residents. This will be achieved through the use of landscape treatments such as inground planting, planters and vertical climbers that will complement the architecture and materiality used throughout the Activity Centre.

Within the arcade corridor seating spaces and planters have been designed and strategically located to create different zones whilst enhancing the amenity of the corridor.

Planting opportunities within the carpark have been utilised with careful consideration to complement the existing surrounding landscape whilst aligning to Macedon Rural Council indigenous plant list.

LEGEND

- PROPERTY BOUNDARY
- EXISTING NATURE STRIP
- FACILITIES
- ROADCARPARK (Asphalt Surface)
- PAVING TYPE A (Pedestrian Paving)
- PAVING TYPE B (Pedestrian Paving)
- PLANTERS
- SEATING
- EXISTING TREES
- TREES TO BE REMOVED
- PROPOSED TREES (Refer to Planting Schedule)
- SCREEN HEDGE PLANTING (Refer to Planting Schedule)
- PROPOSED SHRUBS (Refer to Planting Schedule)
- PROPOSED GRASSES, GROUNDCOVERS, CLIMBERS (Refer to Planting Schedule)
- WSUD - RAIN GARDENS (To be confirmed)
- SLIMLINE WATER TANK

INDICATIVE PLANT LIST

BOTANICAL NAME	COMMON NAME	MATURE SIZE (m)
CARPARK PLANTING		
TREES		
<i>Acacia melanoxylon</i>	Blackwood	12.0-15.0 x 5.0m
<i>Allocasuarina verticillata</i>	Drooping Sheoak	9.0 x 5.0m
<i>Banksia marginata</i>	Silver Banksia	5.0 x 4.0m
<i>Eucalyptus melliodora</i>	Yellow Box	10-15 x 8-10m
<i>Eucalyptus ovata</i>	Swamp Gum	10.0 x 5.0m
<i>Eucalyptus radiata</i>	Narrow-Leafed Peppermint	15-20 x 8-12m
SHRUBS		
<i>Acacia paradoxa</i>	Hedge Wattle	2.0 x 2.0m
<i>Callistemon sieberi</i>	River Bottlebrush	2.5 x 2.5m
<i>Common correa</i>	Correa reflexa var. reflexa	1.5 x 1.5m
<i>Goodenia ovata</i>	Hop Goodenia	1.0 x 1.0-3.0m
<i>Ozmanthus obcordatus</i>	Grey Everlasting	1.5 x 1.0m
<i>Tasmannia lanceolata</i>	Mountain Pepper	3.0 x 2.0m
<i>Xanthorrhoea australis</i>	Austral Grass-tree	3.0 x 1.8m
GRASSES, GROUNDCOVERS & CLIMBERS		
<i>Carex appressa</i>	Tall Sedge	1.0 x 1.0m
<i>Dianella revoluta var. revoluta</i>	Black-anther Flax-lily	0.5-1.0 x 0.5-1.5m
<i>Dichondra repens</i>	Kidney-weed	0.1 x 1.0m
<i>Poa labillardierei</i>	Common Tussock-Grass	1.2 x 0.5m
<i>Themeda triandra</i>	Kangaroo Grass	1.0 x 1.0m
<i>Trachelospermum jasminoides</i>	Star Jasmine	0.15 x 1.0m
<i>Viola hederacea</i>	Native Violet	0.15 x 0.5m
WSUD PLANTING		
<i>Juncus amabilis</i>	Hollow Rush	1.0 x 1.0m
<i>Lomandra longifolia</i>	Spiny Headed Mat Ruh	0.65 x 0.65m

PLANTING PALETTE

TREES



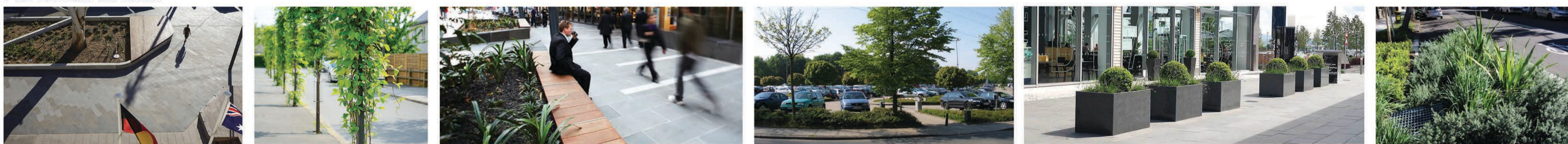
SHRUBS

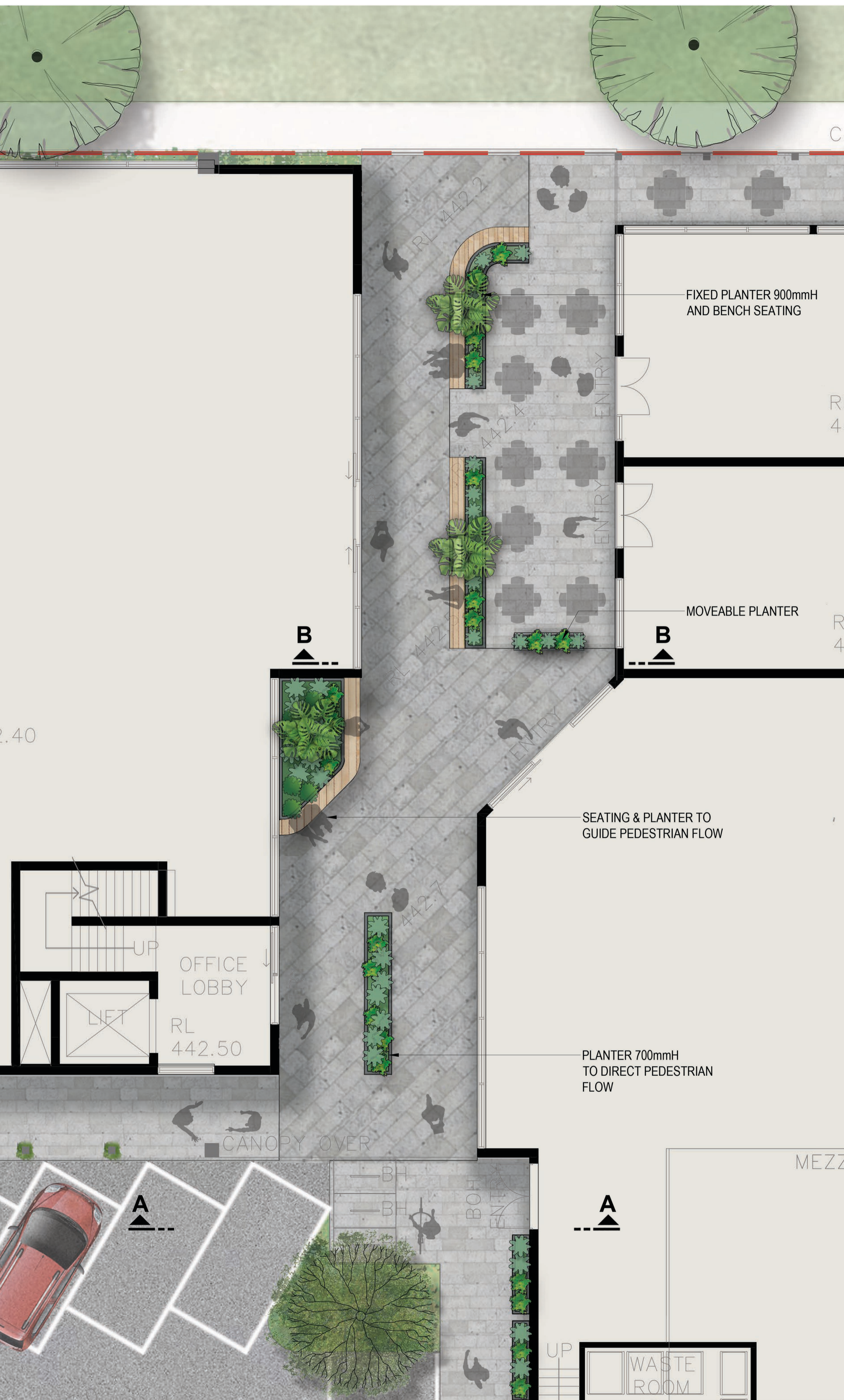


GRASSES & GROUNDCOVERS



PRECEDENT IMAGERY





SECTION PERSPECTIVE A-A
SCALE 1:50



ARCANE SECTION B-B
SCALE 1:50

MATERIALS PALETTE



PLANTING PALETTE



PLANTING LIST

BOTANICAL NAME	COMMON NAME	MATURE SIZE (m)
ARCANE PLANTING		
<i>Arthropodium cirratum</i>	Arthropodium Matapouri Bay	1.0 x 1.0 m
<i>Blechnum nudum</i>	Fishbone Water-Fern	0.5-1.0 x 0.5-1.0m
<i>Dicksonia antarctica</i>	Soft Tree-Fern	4.5 x 2.0m
<i>Lagerstroemia indica x fauriei 'Natchez'</i>	Crepe Myrtle (White)	5.0 x 4.0m
<i>Liriope muscari 'Royal Purple'</i>	Liriope Royal Purple	0.45 x 0.45m
<i>Lomandra longifolia 'Tanika'</i>	Lomandra tanika	0.6 x 0.6m
<i>Myoporum parvifolium 'Yareena'</i>	Myoporum Yareena	0.1 x 1.0m
<i>Trachelospermum asiaticum</i>	Asiatic star jasmine	0.15 x 1.0m

ARCANE PLAN
SCALE 1:50

