



Arboricultural Report

Assessment of Trees at 88A-90 Wedge Street, Kyneton

Report Details

Client:	Tomkinson Group 12/99-101 Western Avenue, Westmeadows 3049
Intended Audience:	Macedon Ranges Shire Council Others as required by Tomkinson
Subject site details:	88A-90 Wedge Street, Kyneton
Date of assessment	Wednesday, 7 July 2021
Date of report:	Friday, 3 June 2022
Planning permit details:	
Council details:	Macedon Ranges Shire Council
Zone and relevant overlays:	Neighbourhood Residential Zone (NRZ) Development Plan Overlay (DPO) Environmental Audit Overlay (EAO) Environmental Significance Overlay (ESO)
Relevant Standards:	AS 4970:2009- Protection of Trees on Development Sites AS 4373:2007 - Pruning of Amenity Trees AS 4687:2007 - Temporary Fencing and Hoardings
Plans, maps or other construction information:	Subdivision Plans - Tomkinson Group, (dwg No: 1326301 Export)
Other relevant Arborist, Ecology or Development Impact Reports:	
Axiom Tree Management Job Number:	10671
Prepared By:	<i>Tim Cameron - Consulting Arborist/Director</i> Email: timcameron@axiomtrees.com Qualifications: -Graduate Certificate Arboriculture -Diploma Horticulture (Arboriculture) – AQF Level 5 and/or <i>Aaron Monro - Consulting Arborist</i> Email: aaronm@axiomtrees.com Qualifications: Diploma Arboriculture – AQF Level 5
Reviewed By:	<i>Robyn Cameron – Axiom Tree Management Administration Co-ordinator</i>
Axiom Tree Management Business Information	Axiom Tree Management Pty Ltd (Office Address) Office 2/ 8 Sauer Rd, New Gisborne VIC 3438 (Postal Address) 48 Montgomerys Lane, Woodend 3442 Ph: 0428 896 951 ABN: 11 612 205 099

Summary

Axiom Tree Management Pty Ltd has been engaged by Tomkinson Group to provide a report on trees at 88A-90 Wedge Street, Kyneton. A Preliminary Arborist report has been requested as part of the proposed development to assist with planning.

The subject site is a large residential property in the rural town of Kyneton. The site is relatively flat and covers approximately 1.97 hectares and is bordered on the south by the Post Office Creek. The site contains a single storey weatherboard dwelling, outbuildings, and water tanks. The site contains extensively managed gardens with large numbers of young and semi-mature specimens planted as individuals and groups.

One hundred and twenty-five trees (125) were assessed on and directly adjoining the subject site that may be impacted by future development. The trees have been planted as tube stock in rows and groups and are not subject to Clause 52.17 of the planning scheme.

- The health of most of the trees is 'Good'.
 - The trees are growing close to a water course which provide favourable growing conditions with deep sub surface soil and few limitations to root growth and water movement. The trees are also relatively young and managed in a garden context with modern horticultural techniques used to improve the health of the trees.
- The structure of most of the trees is 'Good'.
 - The trees are exhibiting form typical of planted specimens throughout the Macedon Ranges area being well adapted to local conditions. The trees are growing as groups, rows and individuals with corrective pruning carried out on trees from an early age to improve structure.
- ULE is an estimation of how long a tree can provide amenity in the landscape at an acceptable level of risk.
 - Most of the trees have been assigned a long ULE of greater than 20 years (Table 2). Most of the trees are relatively young long-lived specimens that are growing in favourable soil conditions and have the potential to live for many decades and centuries.

Four retention values have been considered, consisting of 'High', 'Medium', 'Low' and 'Third party'.

- No trees (0) have been assigned High retention value
- Seventy-four trees (74) have been assigned 'Medium' retention value
- Forty-eight trees (48) have been assigned 'Low' retention value
- Three trees (3) have been assessed within the adjoining neighbouring properties

It is proposed to subdivide the site into eighteen (18) residential lots including construction of internal roads, drainage, services. Land adjoining the creek is proposed to set aside as public open space as part of the design.

Seventy-nine (79) trees and groups of trees all within the subject site are proposed to be removed. Forty-six (46) trees and groups of trees within the creek reserve and nature strip are to be retained and protected throughout construction works.

Contents

1	INTRODUCTION	4
2	KEY OBJECTIVES	4
2.1	SITE METHODOLOGY	4
2.2	SITE MAP	5
3	OBSERVATIONS/DISCUSSIONS	6
3.1	SUBJECT SITE	6
3.2	TREES DETAILS	7
3.2.1	Species Composition	7
3.2.2	Health	7
3.2.3	Structure	7
3.2.4	Useful Life Expectancy (ULE)	8
3.3	TREE RETENTION	8
3.3.1	High Retention	8
3.3.2	Medium Retention	8
3.3.3	Low Retention	8
3.3.4	Third Party Trees	8
3.4	TPZ SPECIFICATIONS	9
3.4.1	TPZ Fencing	9
3.4.2	Encroachment	10
3.4.3	SRZ	10
3.5	FUTURE DESIGN AND CONSTRUCTION IMPACT	10
3.6	GENERAL CONSTRUCTION SPECIFICATIONS	11
3.7	TPZ AND SITE MAP	12
4	CONCLUSION AND RECOMMENDATIONS	13
5	REFERENCES	13
6	APPENDICES	14
6.1	DEFINITIONS	14
6.2	TPZ SITE MAP	16
6.1	INDIVIDUAL TREE DETAILS SPREADSHEET	17
6.1	INDIVIDUAL TREE DETAILS	21

Disclaimer: This document may only be used for the purpose for which it was commissioned and in accordance with the contract between Axiom Tree Management and the client. This includes the information contained in the report, maps, photos and any other documentation. The scope of services was defined in consultation with the client, by time and budgetary constraints, and the availability of reports and other data on the subject area. Changes to available information, legislation and schedules are made on an ongoing basis and readers should obtain up to date information.

1 Introduction

Axiom Tree Management Pty Ltd has been engaged by Tomkinson Group to provide a report on trees at 88A-90 Wedge Street, Kyneton. A Preliminary Arborist report has been requested as part of the proposed development to assist with planning.

A concept plan has been provided by Tomkinson Group and has been used to locate and assess trees (Job Ref: 890296CP03 Rev B, Date: 11/09/2018).

The site is in a Neighbourhood Residential Zone (NRZ), located within Macedon Ranges Shire Council. The relevant overlays that may restrict the removal or pruning of trees include:

- Neighbourhood Residential Zone (NRZ)
- Environmental Audit Overlay (EAO)
- Development Plan Overlay (DPO)
- Environmental Significance Overlay (ESO)

In Victoria, a permit is usually required to remove, destroy, or lop native vegetation. These regulations are known as the native vegetation removal regulations and are primarily implemented through local council planning schemes.

2 Key Objectives

As part of the report the key objectives include:

- Identify and record the dimensions of all trees that have the potential to be impacted by future development.
- Provide an assessment of the health, structure, and retention value of the tree specimens; and
- Provide tree protection measures in accordance with AS 4970 2009 for retained trees to ensure that their health and structure is maintained or improved throughout development and in the long term.

2.1 Site Methodology

On Wednesday, 7 July 2021, Aaron Monro conducted a site inspection. Data collected for the trees included but was not limited to:

- Botanical Name;
- Diameter at Breast Height (DBH);
- Retention Value;
- Canopy Dimensions (estimated);
- Health and Structure;
- Useful Life Expectancy (ULE).

Additional methodology includes:

- Assessments were conducted from ground level, with no instruments other than a diameter tape to measure DBH.
- A detailed visual inspection of the tree/s and the surrounding site was conducted, including a complete walk around the tree, looking at the buttress roots, trunk, branches, and leaves.
- Trees were assessed and located using differentially corrected GPS (generally +/- 1.0m accuracy) and aligned to a surveyor feature survey where available.

Site Map



Drawn and Plotted by: AKM
Date: 16/02/2022 Scale:1:2,844
Geographic Projection:
GDA 1994 MGA Zone 55

Assessment of Trees 88 Wedge Street Kyneton

Legend

- | | |
|----------------|------------|
| Retain/ Remove | Tree_Row |
| ● Retain | Tree_Group |
| ● Remove | Roads |
| | Boundary |
| | Cadastre |



3 Observations/Discussions

3.1 Subject Site

The subject site is a large residential property in the rural town of Kyneton. The site is relatively flat and covers approximately 1.97 hectares and is bordered on the south by the Post Office Creek. The site contains a single storey weatherboard dwelling, outbuildings, and water tanks. The site contains extensively managed gardens with large numbers of young and semi-mature specimens planted as individuals and groups (Figure 1 & Figure 2).



Figure 1. Subject site looking east showing planted rows of eucalyptus trees and planted exotics



Figure 2. Subject site looking south showing population of planted indigenous trees along Post Office Creek

3.2 Trees Details

3.2.1 Species Composition

One hundred and twenty-five trees (125) were assessed on and directly adjoining the subject site that may be impacted by future development. Most of the trees are *Eucalyptus viminalis*, *Eucalyptus ovata* and *Quercus palustris* (Table 1). The trees have been planted as tube stock in rows and groups and are not subject to Clause 52.17 of the planning scheme.

- *Eucalyptus viminalis* is a tall forest tree, usually single stemmed with smooth cream, grey and white bark. It is indigenous to much of Victoria, particularly sites with high rainfall and the eastern half of Tasmania (Nicolle, 2006).
- *Eucalyptus ovata* (Swamp Gum) is a small too tall woodland to forest tree to 25m tall. It has loose fibrous bark on the lower trunk then smooth upper stems and branches. It exists widely in the wetter parts of Victoria and Tasmania (Nicolle,2006).
- *Quercus palustris* is a broadly conical deciduous tree originating from North America (Spencer, 1997). Widely planted as an avenue and park tree the species can reach a height of 25m at maturity.

Table 1. Species composition

Botanical Name	Common Name	Origin	Count
<i>Eucalyptus viminalis</i>	Manna Gum	Indigenous	24
<i>Eucalyptus ovata</i>	Swamp Gum	Indigenous	9
<i>Quercus palustris</i>	Pin Oak	Exotic	8
<i>Pyrus calleryana</i>	Callery Pear	Exotic	8
<i>Hesperocyparis macrocarpa</i>	Monterey Cypress	Exotic	7
<i>Acer rubrum</i>	Red Maple	Exotic	6
<i>Malus domestica</i>	Apple	Exotic	6
<i>Eucalyptus camaldulensis</i>	River Red Gum	Indigenous	5
<i>Juglans regia</i>	Walnut	Exotic	4
<i>Gleditsia triacanthos</i>	Honey Locust	Exotic	3
<i>Betula pendula</i>	Silver Birch	Exotic	3
<i>Buddleja davidii</i>	Butterfly Bush	Exotic	3
<i>Eucalyptus sideroxylon</i>	Red Ironbark	Native	3
<i>Fraxinus excelsior 'Aurea'</i>	Golden Ash	Exotic	3
<i>Ulmus parvifolia</i>	Chinese Elm	Exotic	3
<i>Quercus canariensis</i>	Algerian Oak	Exotic	3
Other			27
Total			125

3.2.2 Health

The health of most of the trees is 'Good'(Table 2). The assessment of health has been assigned based on several factors including canopy growth and density, presence of pest or disease, presence of dead branches taking into account the time of year and typical form of the species. The trees are growing close to a water course which provide favourable growing conditions with deep sub surface soil and few limitations to root growth and water movement. The trees are also relatively young and managed in a garden context with modern horticultural techniques used to improve the health of the trees.

3.2.3 Structure

The structure of most of the trees is 'Good' (Table 2). The trees are exhibiting form typical of planted specimens throughout the Macedon Ranges area being well adapted to local conditions. The trees are growing as groups, rows and individuals with corrective pruning carried out on trees from an early age to improve structure.

Table 2. Health, Structure and ULE ratings

Health/Structure Range	Health Count	Structure Count	ULE ratings	ULE
Good	111	64	0-5 years	4
Fair	12	57	5-10 years	1
Poor	0	2	10-20 years	16
Very poor/Dead	2	2	20+ years	104
Total	125	125	Total	125

3.2.4 Useful Life Expectancy (ULE)

The ULE of a tree is assigned by the assessor based on many factors including species longevity, suitability to the site and current age and condition both regarding health and structure. It is an estimation of how long a tree can provide amenity in the landscape at an acceptable level of risk. Most of the trees have been assigned a long ULE of greater than 20 years (Table 2). Most of the trees are relatively young long-lived specimens that are growing in favourable soil conditions and have the potential to live for many decades and centuries.

3.3 Tree Retention

Four retention values have been considered, consisting of 'High', 'Medium', 'Low' and 'Third party'. Retention value considers tree size and condition, ULE, contribution to landscape and individual tree significance and they provide useful information to planners, regarding which trees are considered worthy of protection in the design phase. Table 3 gives a breakdown of retention values across the site.

Table 3. Retention Values

Retention Value	Count
High	0
Medium	74
Low	48
Third Party	3
Total	125

3.3.1 High Retention

No trees (0) have been assigned High retention value. High retention trees are well suited to the site and offer amenity. They are normally in 'Good' to 'Fair' health and have 'Good' to 'Fair' structure. The ULE should be at least the same as the design life of any new buildings. Most of the trees are young and semi-mature and have not reached the size or age to be assigned 'High' retention value.

3.3.2 Medium Retention

Seventy-four trees (74) have been assigned 'Medium' retention value. The trees are moderate or large sized specimens with a general condition rating of fair. If designing around these trees is not feasible or practical, removal and replacement would be an acceptable compromise.

3.3.3 Low Retention

Forty-eight trees (48) have been assigned 'Low' retention value. Low retention value trees are either young or semi mature common varieties that are easily replaceable or are dead and require removal. Trees in poor health or with significant defects in structure are not suitable for preservation in areas where people or structures will be located (Matheny & Clark, 1998).

3.3.4 Third Party Trees

Three trees (3) have been assessed within the adjoining neighbouring properties. The trees have been assessed on the assumption that their owner requires their retention. It is neither an observation of good health of the tree or suitability for retention. Consideration must be given for their protection throughout any future proposed development on the site unless the property owner and/or responsible authority gives consent.

3.4 TPZ Specifications

Regardless of tree condition or retention value, any tree selected to be retained requires protection during construction. The best way to protect retained trees as part of any development is by establishing a tree protection zone (TPZ). TPZs have been calculated according to *Protection of Trees on Development Sites* (AS 4970-2009) for all trees to be retained calculating the TPZ as 12 times the trunk diameter at 1.4m above ground level (DBH).

The TPZ fence is designed to act as a physical barrier of protective fencing that is a minimum of 1.8m high. It is erected around retained specimens (at the edge of the TPZ) before site works commence.

3.4.1 TPZ Fencing

TPZ fencing should be a minimum height of 1.8m constructed of wire mesh or equivalent and supported by concrete pads (AS 4970 2009). Once TPZ fencing has been erected, the area contained within the fencing needs to be mulched with woodchips to a depth of 100mm. See Figure 3

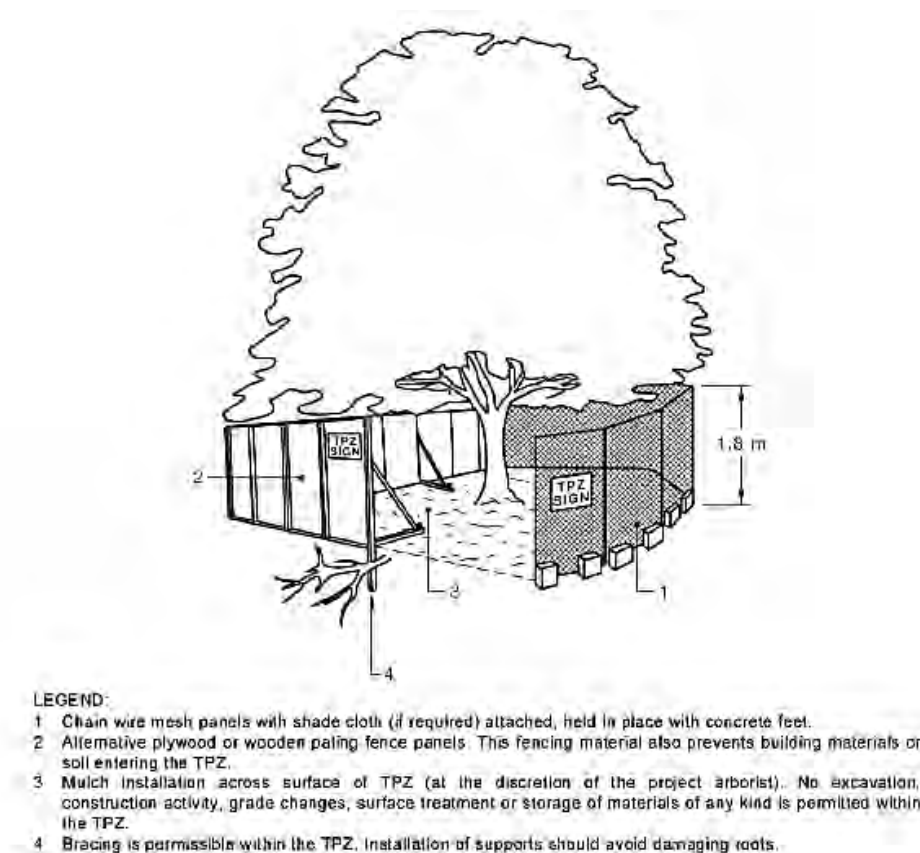


Figure 3. Tree Protection

Activities excluded from the TPZ include but are not limited to-

- machine excavation including trenching (unless on approved plans);
- cultivation;
- preparation of chemicals, including cement products;
- refuelling;
- wash down and cleaning of equipment;
- lighting of fires;
- temporary or permanent installation of utilities and signs;
- excavation for silt fencing;
- storage;
- parking of vehicles and plant;
- dumping of waste;
- placement of fill;
- soil level changes;
- physical damage to the tree/s.

3.4.2 Encroachment

Encroachment into the TPZ of trees is allowed under certain circumstances depending on a number of factors including site and tree conditions.

3.4.2.1 Encroachment Less Than 10%

Encroachment of less than 10% of the TPZ and outside the SRZ is deemed to be minor encroachment according to AS 4970-2009. Detailed root investigations should not be required but must be compensated with an extension to the TPZ elsewhere (Figure 4 & Figure 5). Variations must be made by the project arborist considering other relevant factors including tree health, vigour, stability, species sensitivity and soil characteristics.

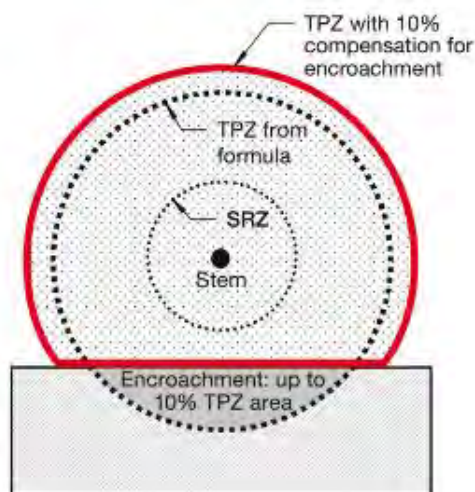


Figure 4 Example of TPZ encroachment and compensatory offset (image from AS 4970-2009).

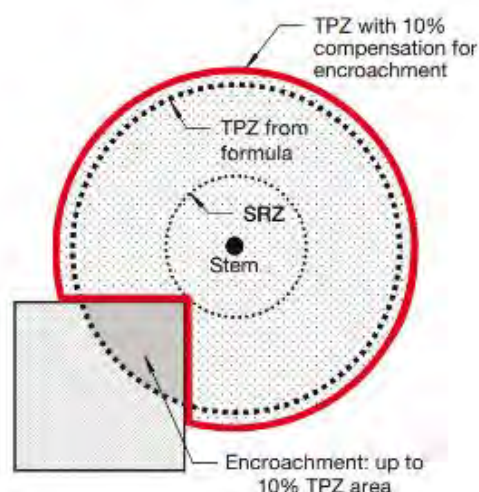


Figure 5 Example of TPZ encroachment and compensatory offset (image from AS 4970-2009).

3.4.2.2 Encroachment Greater Than 10%

Encroachment of more than 10% of the TPZ or into the SRZ will require the project arborist to demonstrate that the tree(s) will remain viable. The area lost to this encroachment should be compensated for elsewhere and contiguous with the TPZ. This may require root investigation by non-destructive methods and consideration of relevant factors tree health, vigour, stability, species sensitivity and soil characteristics.

3.4.3 SRZ

The SRZ is the minimum volume of roots required by the tree to remain stable in the ground. If the SRZ is breached the chances of windthrow are significantly increased, especially if roots are cut on the same side as prevailing winds. Windthrow is an event where the entire tree fails/falls over. Often, the tree is completely uprooted with devastating results. It is important to note that the SRZ is not related to tree health. It refers to the physical volume of roots required for the tree to remain stable in the ground. It is in no way related to the physiological requirements of the tree but is the minimum volume of roots required for the tree to remain standing.

3.5 Design Proposal and Construction Impact

It is proposed to subdivide the site into eighteen (18) residential lots including construction of internal roads, drainage, services. Land adjoining the creek is proposed to set aside as public open space as part of the design. Seventy-nine (79) trees and groups of trees all within the subject site are proposed to be removed. Forty-six (46) trees and groups of trees within the creek reserve and nature strip are to be retained and protected throughout construction works.

3.6 General Construction Specifications

TPZ and SRZ dimensions and locations have been provided as part of this report. Where possible, construction works, and associated activities should be avoided within TPZ areas. Where low impact construction works are required within TPZ areas the following specifications should be adhered to.

Footpath Construction within TPZ's

Construction of the footpaths has the potential to impact trees due to excavation, compaction, and mechanical damage. Where construction of path is required within large areas of TPZ and SRZ areas, the following construction techniques should be adopted in consultation with the project Arborist:

- Footpath construction within the TPZ area is to be constructed at or near grade using porous/permeable material with no greater than 100mm cut/scrape permitted for preparation.
- Cut/scrape for preparation is to be dug by hand within TPZ areas to reduce the likelihood of root damage.
- Where surface roots are identified, the finished soil level is to be raised (no greater than 150mm) to reduce the probability of root damage.
- Excavation equipment are not permitted within TPZ areas.
- Where large amounts of battering/fill is required greater than 150mm, alternative design methods/materials will be required to reduce the impact on trees.

Landscaping within TPZ Areas

Unspecified landscaping may be required for within TPZ and SRZ areas. The following specifications are to be adhered to during landscaping operations:

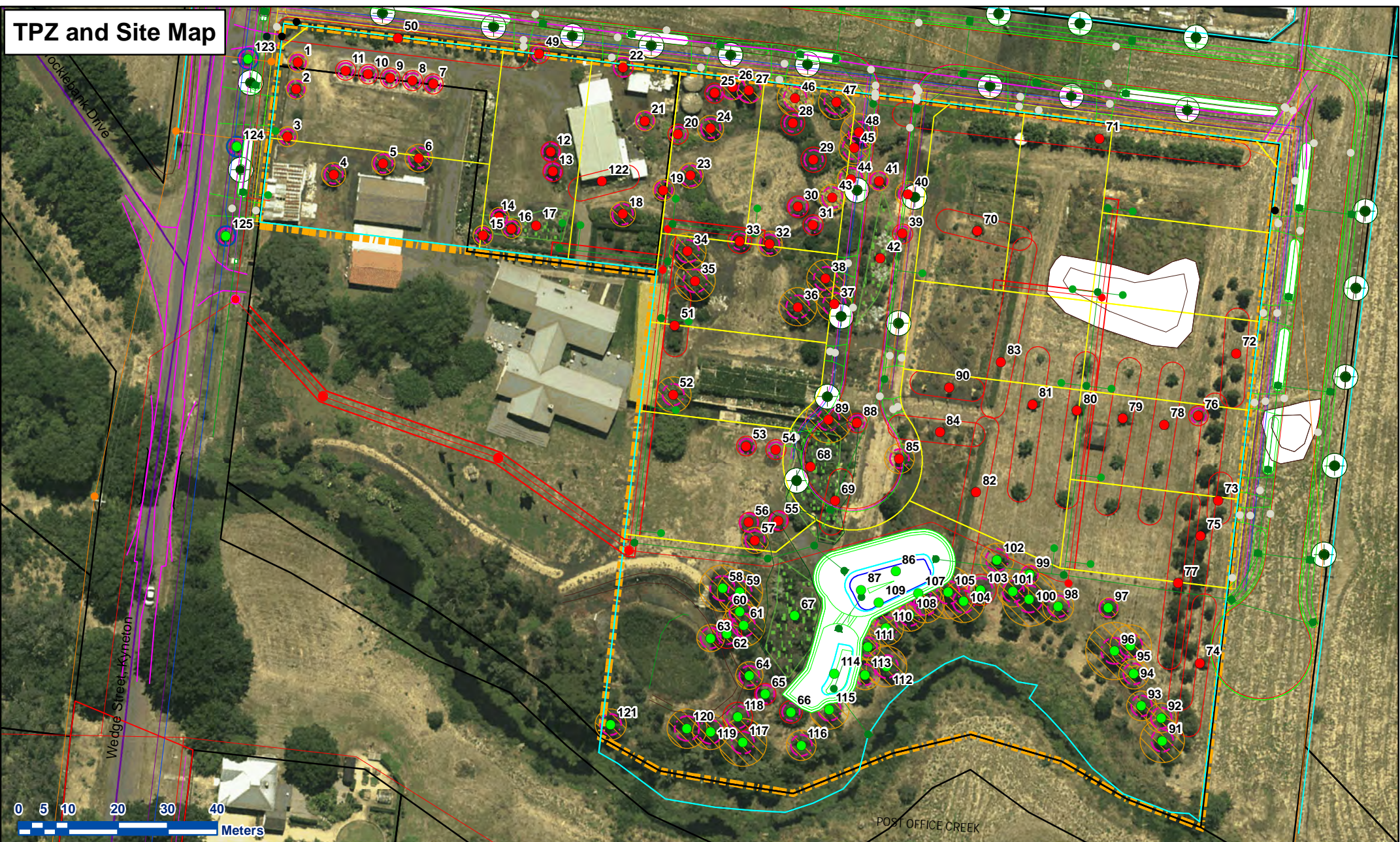
- No machine excavation or placement of soil fill within SRZ areas.
- No machine excavation or placement of soil fill greater than 150mm within TPZ areas; and
- Holes for tree planting are to be dug by hand within the TPZ of adjoining trees with no augers or excavation machinery used.

Pruning

Pruning works may be required for clearance where footpath and areas of congregation are proposed within the creek reserve. Qualified arborists should carry out all pruning works.

- The minimum qualification should be Certificate in Arboriculture AQF Level 3.
- All pruning should conform to the Australian Standard Pruning of Amenity Trees (AS 4373-2007).

TPZ and Site Map



Assessment of Trees 88A-90 Wedge Street Kyneton

Drawn and Plotted by: AKM
Date: 3/06/2022 Scale:1:994
Geographic Projection:
GDA 1994 MGA Zone 55

Legend

- | | | |
|----------|---------------|--------------|
| ● Remove | ▨ Medium | ▭ Cadastre |
| ● Retain | ▭ Low | ▨ Boundary |
| ▭ SRZ | ▭ Third party | ▨ Tree_Group |
| | | — Roads |



4 Conclusion and Recommendations

Axiom Tree Management Pty Ltd has been engaged by Tomkinson Group to provide a report on trees at 88A-90 Wedge Street, Kyneton. A Preliminary Arborist report has been requested as part of the proposed development to assist with planning.

The subject site is a large residential property in the rural town of Kyneton. The site is relatively flat and covers approximately 1.97 hectares and is bordered on the south by the Post Office Creek. The site contains a single storey weatherboard dwelling, outbuildings, and water tanks. The site contains extensively managed gardens with large numbers of young and semi-mature specimens planted as individuals and groups.

One hundred and twenty-five trees (125) were assessed on and directly adjoining the subject site that may be impacted by future development. The trees have been planted as tube stock in rows and groups and are not subject to Clause 52.17 of the planning scheme.

- The health of most of the trees is 'Good'.
 - The trees are growing close to a water course which provide favourable growing conditions with deep sub surface soil and few limitations to root growth and water movement. The trees are also relatively young and managed in a garden context with modern horticultural techniques used to improve the health of the trees.
- The structure of most of the trees is 'Good'.
 - The trees are exhibiting form typical of planted specimens throughout the Macedon Ranges area being well adapted to local conditions. The trees are growing as groups, rows and individuals with corrective pruning carried out on trees from an early age to improve structure.
- ULE is an estimation of how long a tree can provide amenity in the landscape at an acceptable level of risk.
 - Most of the trees have been assigned a long ULE of greater than 20 years (Table 2). Most of the trees are relatively young long-lived specimens that are growing in favourable soil conditions and have the potential to live for many decades and centuries.

Four retention values have been considered, consisting of 'High', 'Medium', 'Low' and 'Third party'.

- No trees (0) have been assigned High retention value
- Seventy-four trees (74) have been assigned 'Medium' retention value
- Forty-eight trees (48) have been assigned 'Low' retention value
- Three trees (3) have been assessed within the adjoining neighbouring properties

It is proposed to subdivide the site into eighteen (18) residential lots including construction of internal roads, drainage, services. Land adjoining the creek is proposed to set aside as public open space as part of the design.

Seventy-nine (79) trees and groups of trees all within the subject site are proposed to be removed. Forty-six (46) trees and groups of trees within the creek reserve and nature strip are to be retained and protected throughout construction works.

5 References

AS 4373, 2007, *Australian Standard, Pruning Amenity Trees*, 2nd Edition Standards Australia

AS 4970, 2009, *Australian Standard, Protection of Trees on Development Sites*, Standards Australia.

Matheny, N. & Clark, J. 1998 *Trees and development – a technical guide to preservation of trees during land development*. International Society of Arboriculture, Champaign, IL USA

6 Appendices

6.1 Definitions

Botanical name:

The genus, species and common name.

Canopy dimensions

Height (approximate) and width (measured) of the canopy in metres.

DBH

Diameter at breast height (measured at 1.4m above ground level).

Tree Origin

Term	Definition
Exotic	The species originates in a country other than Australia.
Native	The species originates within Australia.
Indigenous	The species originates within the local environs.

Health

Term	Definition
Excellent	The tree is demonstrating excellent or exceptional growth. The tree should exhibit a full canopy of foliage and be free of pest and disease problems.
Good	The tree is demonstrating good or exceptional growth. The tree should exhibit a full canopy of foliage, and have only minor pest or diseases problems.
Fair	The tree is in reasonable condition and growing well. The tree should exhibit an adequate canopy of foliage. There may be some deadwood present in the crown. Some grazing by insects or possums may be evident.
Poor	The tree is not growing to its full capacity; extension growth of the laterals is minimal. The canopy may be thinning or sparse. Large amounts of deadwood may be evident throughout the crown. Significant pest and disease problems may be evident or symptoms of stress indicating tree decline.
Very Poor	The tree appears to be in a state of decline. The tree is not growing to its full capacity. The canopy may be very thin and sparse. A significant volume of deadwood may be present in the canopy or pest and disease problems may be causing a severe decline in tree health.
Dead	The tree is dead.

Structure

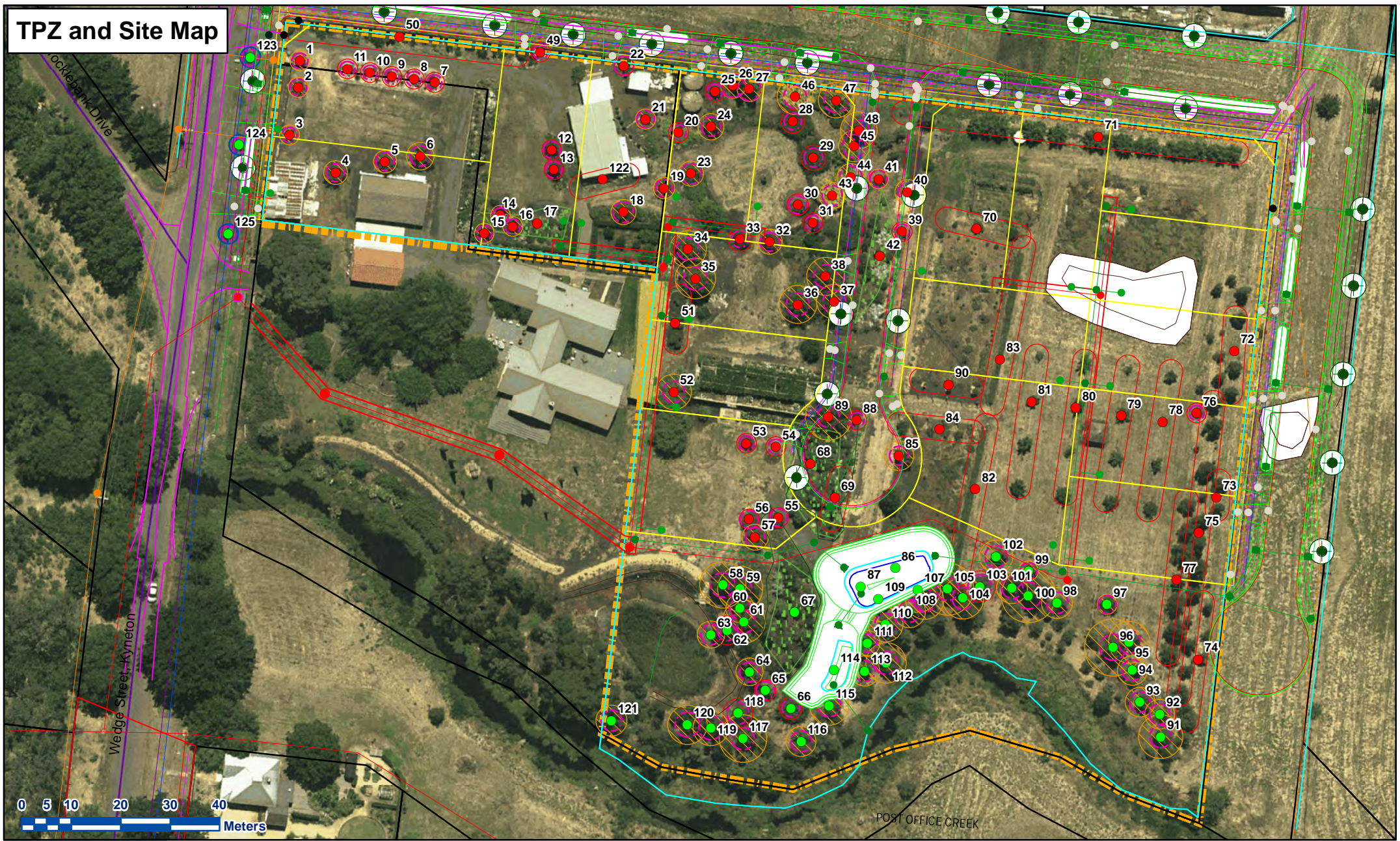
Term	Definition
Good	The tree has a well-defined and balanced crown. Branch unions appear to be strong, with no defects evident in the trunk or the branches. Major limbs are well defined. The tree is considered a good example of the species.
Fair	The tree has some minor problems in the structure of the crown. The crown may be slightly out of balance, and some branch unions may be exhibiting minor structural faults. If the tree has a single trunk, it may be on a slight lean or exhibiting minor defects.
Poor	The tree may have a poorly structured crown. The crown may be unbalanced or exhibit large gaps. Major limbs may not be well defined. Branches may be rubbing or crossing over. Branch unions may be poor or faulty at the point of attachment. The tree may have suffered root damage.
Very Poor	The tree has a poorly structured crown. The crown is unbalanced or exhibit large gaps with possibly large sections of deadwood. Major limbs may not be well defined. Branches may be rubbing or crossing over. Branch unions may be poor or faulty at the point of attachment. Branches may exhibit large cracks that are likely to fail in the future. The tree may have suffered major root damage.
Failed	The tree has a very poorly structured crown. A section of the tree has failed or is in imminent danger of failure.

Useful Life Expectancy (ULE) Rating

Useful Life Expectancy is approximately how long a tree can be retained safely and usefully in the landscape.

Term	Definition
0 years	The tree is considered dangerous in the location and has no significant amenity value.
Less than 5 years	The tree, under normal circumstances and without extra stresses being imposed on it, should be safe and have value for up to five years, but will need to be replaced. During this period, normal inspections and maintenance will be required. If possible, replacement trees should be planted.
5 – 10 years	The tree, under normal circumstances and without extra stresses being imposed on it, should be safe and of value for up to ten years. During this period, normal inspections and maintenance will be required.
10– 20 years	The tree, under normal circumstances and without extra stresses being imposed on it, should be safe and of value for up to twenty years. During this period, normal inspections and maintenance will be required.
Greater than 20 years	The tree, under normal circumstances and without extra stresses being imposed on it, should be safe and of value for greater than 20 years. During this period, normal inspections and maintenance will be required.

TPZ and Site Map



Assessment of Trees 88A-90 Wedge Street Kyneton



Drawn and Plotted by: AKM
 Date: 3/06/2022 Scale:1:994
 Geographic Projection:
 GDA 1994 MGA Zone 55

Legend

- | | | |
|----------|---------------|--------------|
| ● Remove | ▨ Medium | ▭ Cadastre |
| ● Retain | ▭ Low | ▨ Boundary |
| ▭ SRZ | ▭ Third party | ▨ Tree_Group |
| | | — Roads |



6.1 Individual Tree Details Spreadsheet

ID	Botanical Name	Common Name	Origin	Age	Subject to 52.17	H x W	DBH (cm)	Health	Structure	ULE	Retention Value	TPZ (m radius)	SRZ (m radius)	Retain/Remove
1	<i>Gleditsia triacanthos</i>	Honey Locust	Exotic	S mature	No	6m x 4m	15	Good	Fair	20+ years	Medium	2	1.57	Remove
2	<i>Gleditsia triacanthos</i>	Honey Locust	Exotic	S mature	No	6m x 4m	16	Good	Fair	20+ years	Medium	2	1.68	Remove
3	<i>Gleditsia triacanthos</i>	Honey Locust	Exotic	S mature	No	6m x 4m	11	Good	Fair	20+ years	Medium	2	1.50	Remove
4	<i>Ulmus parvifolia</i>	Chinese Elm	Exotic	S mature	No	5m x 5m	20	Good	Good	20+ years	Medium	2.4	1.82	Remove
5	<i>Ulmus parvifolia</i>	Chinese Elm	Exotic	S mature	No	5m x 6m	19	Good	Good	20+ years	Medium	2.28	1.85	Remove
6	<i>Ulmus parvifolia</i>	Chinese Elm	Exotic	S mature	No	7m x 6m	23	Good	Good	20+ years	Medium	2.76	2.05	Remove
7	<i>Acer rubrum</i>	Red Maple	Exotic	S mature	No	4m x 1m	7	Good	Good	20+ years	Low	2	1.50	Remove
8	<i>Acer rubrum</i>	Red Maple	Exotic	S mature	No	4m x 1m	7	Good	Good	20+ years	Low	2	1.50	Remove
9	<i>Acer rubrum</i>	Red Maple	Exotic	S mature	No	4m x 1m	7	Good	Good	20+ years	Low	2	1.50	Remove
10	<i>Acer rubrum</i>	Red Maple	Exotic	S mature	No	4m x 1m	6	Good	Good	20+ years	Low	2	1.50	Remove
11	<i>Acer rubrum</i>	Red Maple	Exotic	S mature	No	4m x 1m	6	Good	Good	20+ years	Low	2	1.50	Remove
12	<i>Prunus cerasifera</i>	Cherry Plum	Exotic	S mature	No	6m x 5m	16	Good	Fair	10-20 years	Low	2	1.68	Remove
13	<i>Pyrus calleryana</i>	Callery Pear	Exotic	S mature	No	6m x 5m	9	Fair	Very poor	1-5 years	Low	2	1.65	Remove
14	<i>Acer rubrum</i>	Red Maple	Exotic	S mature	No	5m x 3m	13	Good	Good	20+ years	Medium	2	1.53	Remove
15	<i>Betula pendula</i>	Silver Birch	Exotic	S mature	No	7m x 2m	10	Good	Good	20+ years	Medium	2	1.50	Remove
16	<i>Betula pendula</i>	Silver Birch	Exotic	S mature	No	7m x 2m	10	Good	Good	20+ years	Medium	2	1.50	Remove
17	<i>Betula pendula</i>	Silver Birch	Exotic	Young	No	3m x 1m	3	Good	Fair	20+ years	Low	2	1.50	Remove
18	<i>Quercus palustris</i>	Pin Oak	Exotic	S mature	No	11m x 4m	21	Good	Good	20+ years	Medium	2.52	2.05	Remove
19	<i>Pyrus ussuriensis</i>	Manchurian Pear	Exotic	S mature	No	6m x 6m	18	Good	Fair	20+ years	Medium	2.16	1.72	Remove
20	<i>Platanus Xacerifolia</i>	London Plane	Exotic	Young	No	4m x 1m	4	Good	Fair	20+ years	Low	2	1.50	Remove
21	<i>Platanus Xacerifolia</i>	London Plane	Exotic	S mature	No	6m x 4m	13	Good	Fair	20+ years	Medium	2	1.75	Remove
22	<i>Buddleja davidii</i>	Butterfly Bush	Exotic	S mature	No	4m x 4m	10	Good	Fair	10-20 years	Low	2	1.94	Remove
23	<i>Quercus palustris</i>	Pin Oak	Exotic	S mature	No	11m x 5m	21	Good	Fair	20+ years	Medium	2.52	2.05	Remove
24	<i>Pyrus calleryana</i>	Callery Pear	Exotic	S mature	No	7m x 5m	22	Good	Fair	20+ years	Medium	2.64	1.94	Remove
25	<i>Fraxinus excelsior 'Aurea'</i>	Golden Ash	Exotic	S mature	No	5m x 3m	7	Good	Good	20+ years	Low	2	1.53	Remove
26	<i>Populus nigra 'Italica'</i>	Lombardy Poplar	Exotic	S mature	No	11m x 2m	21	Good	Fair	20+ years	Medium	2.52	2.39	Remove
27	<i>Populus nigra 'Italica'</i>	Lombardy Poplar	Exotic	S mature	No	10m x 2m	21	Good	Fair	20+ years	Medium	2.52	2.34	Remove
28	<i>Malus domestica</i>	Apple	Exotic	S mature	No	5m x 6m	20	Good	Fair	20+ years	Low	2.4	1.75	Remove
29	<i>Malus domestica</i>	Apple	Exotic	S mature	No	5m x 6m	21	Good	Fair	20+ years	Low	2.52	1.88	Remove
30	<i>Cedrus deodara</i>	Deodar Cedar	Exotic	S mature	No	6m x 3m	18	Good	Fair	20+ years	Low	2.16	1.79	Remove
31	<i>Prunus cerasifera 'Nigra'</i>	Purple Cherry Plum	Exotic	S mature	No	5m x 2m	9	Good	Fair	10-20 years	Low	2	1.50	Remove
32	<i>Malus ioensis 'Plena'</i>	Prairie Crabapple	Exotic	S mature	No	4m x 3m	21	Good	Good	20+ years	Medium	2.52	1.91	Remove
33	<i>Malus ioensis 'Plena'</i>	Prairie Crabapple	Exotic	S mature	No	3m x 3m	20	Good	Good	20+ years	Low	2.4	1.68	Remove

ID	Botanical Name	Common Name	Origin	Age	Subject to 52.17	H x W	DBH (cm)	Health	Structure	ULE	Retention Value	TPZ (m radius)	SRZ (m radius)	Retain/Remove
34	<i>Platanus orientalis</i> 'Digitata'	Cut-leaf Plane	Exotic	S mature	No	12m x 6m	31	Good	Good	20+ years	Medium	3.72	2.28	Remove
35	<i>Platanus orientalis</i> 'Digitata'	Cut-leaf Plane	Exotic	S mature	No	12m x 6m	34	Good	Good	20+ years	Medium	4.08	2.34	Remove
36	<i>Quercus palustris</i>	Pin Oak	Exotic	S mature	No	12m x 6m	32	Good	Good	20+ years	Medium	3.84	2.34	Remove
37	<i>Quercus palustris</i>	Pin Oak	Exotic	S mature	No	12m x 6m	29	Good	Good	20+ years	Medium	3.48	2.28	Remove
38	<i>Quercus palustris</i>	Pin Oak	Exotic	S mature	No	12m x 6m	32	Good	Good	20+ years	Medium	3.84	2.37	Remove
39	<i>Cedrus deodara</i>	Deodar Cedar	Exotic	S mature	No	4m x 1m	9	Good	Good	20+ years	Low	2	1.50	Remove
40	<i>Fraxinus oxycarpa</i>	Desert Ash	Exotic	S mature	No	7m x 5m	21	Good	Good	20+ years	Medium	2.52	1.82	Remove
41	<i>Eucalyptus pauciflora</i>	Snow Gum	Indigenous	S mature	No	6m x 3m	16	Good	Fair	20+ years	Medium	2	1.72	Remove
42	<i>Fraxinus oxycarpa</i>	Desert Ash	Exotic	Young	No	3m x 1m	7	Fair	Fair	10-20 years	Low	2	1.50	Remove
43	<i>Hesperocyparis macrocarpa</i>	Monterey Cypress	Exotic	S mature	No	5m x 4m	22	Good	Fair	20+ years	Medium	2.64	2.05	Remove
44	<i>Hesperocyparis macrocarpa</i>	Monterey Cypress	Exotic	S mature	No	5m x 4m	23	Good	Fair	20+ years	Medium	2.76	2.30	Remove
45	<i>Hesperocyparis macrocarpa</i>	Monterey Cypress	Exotic	S mature	No	8m x 5m	26	Good	Fair	20+ years	Medium	3.12	2.32	Remove
46	<i>Hesperocyparis macrocarpa</i>	Monterey Cypress	Exotic	S mature	No	5m x 6m	30	Good	Fair	20+ years	Medium	3.6	2.30	Remove
47	<i>Hesperocyparis macrocarpa</i>	Monterey Cypress	Exotic	S mature	No	8m x 5m	30	Good	Fair	20+ years	Medium	3.6	2.43	Remove
48	<i>Eucalyptus camaldulensis</i>	River Red Gum	Indigenous	S mature	No	7m x 4m	31	Good	Fair	20+ years	Medium	3.72	2.10	Remove
49	<i>Buddleja davidii</i>	Butterfly Bush	Exotic	S mature	No	3m x 3m	10	Good	Good	10-20 years	Low	2	1.50	Remove
50	<i>Buddleja davidii</i>	Butterfly Bush	Exotic	S mature	No	2m x 2m	3	Fair	Fair	10-20 years	Low	2	1.50	Remove
51	<i>Malus domestica</i>	Apple	Exotic	S mature	No	3m x 2m	12	Fair	Fair	10-20 years	Low	2	1.53	Remove
52	<i>Pyrus calleryana</i>	Callery Pear	Exotic	S mature	No	6m x 8m	30	Fair	Fair	10-20 years	Medium	3.6	2.15	Remove
53	<i>Pyrus calleryana</i>	Callery Pear	Exotic	S mature	No	3m x 2m	10	Fair	Poor	5-10 years	Low	2	1.50	Remove
54	<i>Pyrus calleryana</i>	Callery Pear	Exotic	Young	No	2m x 2m	3	Fair	Fair	10-20 years	Low	2	1.50	Remove
55	<i>xCupressocyparis leylandii</i>	Leyland Cypress	Exotic	S mature	No	5m x 3m	14	Good	Fair	10-20 years	Low	2	1.75	Remove
56	<i>Eucalyptus leucoxylon</i>	Yellow Gum	Indigenous	S mature	No	5m x 4m	16	Very Poor	Fair	1-5 years	Low	2	1.82	Remove
57	<i>Eucalyptus leucoxylon</i>	Yellow Gum	Indigenous	S mature	No	5m x 5m	22	Good	Fair	20+ years	Medium	2.64	1.94	Remove
58	<i>Eucalyptus viminalis</i>	Manna Gum	Indigenous	S mature	No	10m x 5m	39	Good	Good	20+ years	Medium	4.68	2.49	Retain
59	<i>Eucalyptus viminalis</i>	Manna Gum	Indigenous	S mature	No	10m x 6m	38	Good	Good	20+ years	Medium	4.56	2.34	Retain
60	<i>Eucalyptus viminalis</i>	Manna Gum	Indigenous	S mature	No	10m x 2m	24	Good	Fair	20+ years	Medium	2.88	2.10	Retain
61	<i>Eucalyptus viminalis</i>	Manna Gum	Indigenous	S mature	No	10m x 5m	36	Good	Fair	20+ years	Medium	4.32	2.30	Retain
62	<i>Eucalyptus viminalis</i>	Manna Gum	Indigenous	S mature	No	10m x 3m	24	Dead	Poor	0 years	Low	2.88	2.05	Retain
63	<i>Eucalyptus viminalis</i>	Manna Gum	Indigenous	S mature	No	9m x 4m	23	Good	Good	20+ years	Medium	2.76	2.05	Retain
64	<i>Eucalyptus viminalis</i>	Manna Gum	Indigenous	S mature	No	9m x 4m	23	Good	Fair	10-20 years	Medium	2.76	1.97	Retain
65	<i>Eucalyptus viminalis</i>	Manna Gum	Indigenous	S mature	No	5m x 3m	18	Good	Fair	10-20 years	Low	2.16	1.82	Retain
66	<i>Malus domestica</i>	Apple	Exotic	S mature	No	5m x 5m	19	Good	Fair	10-20 years	Low	2.28	1.79	Retain

ID	Botanical Name	Common Name	Origin	Age	Subject to 52.17	H x W	DBH (cm)	Health	Structure	ULE	Retention Value	TPZ (m radius)	SRZ (m radius)	Retain/Remove
67	<i>Acacia melanoxylon</i>	Blackwood	Indigenous	Young	No	4m x 2m	9	Good	Fair	20+ years	Low	2	1.50	Retain
68	<i>Hesperocyparis macrocarpa</i>	Monterey Cypress	Exotic	S mature	No	5m x 2m	10	Good	Good	20+ years	Low	2	1.50	Remove
69	<i>Pyrus calleryana</i>	Callery Pear	Exotic	S mature	No	4m x 2m	9	Good	Good	20+ years	Low	2	1.50	Remove
70	<i>Pyrus ussuriensis</i>	Manchurian Pear	Exotic	S mature	No	3m x 2m	11	Good	Good	20+ years	Low	2	1.50	Remove
71	<i>Hesperocyparis macrocarpa</i>	Monterey Cypress	Exotic	S mature	No	6m x 3m	16	Good	Good	20+ years	Low	2	1.68	Remove
72	<i>Eucalyptus viminalis</i>	Manna Gum	Indigenous	S mature	No	6m x 2m	21	Good	Good	20+ years	Medium	2.52	1.94	Remove
73	<i>Eucalyptus viminalis</i>	Manna Gum	Indigenous	S mature	No	6m x 2m	20	Good	Good	20+ years	Medium	2.4	1.91	Remove
74	<i>Eucalyptus viminalis</i>	Manna Gum	Indigenous	S mature	No	6m x 2m	14	Good	Fair	20+ years	Medium	2	1.65	Remove
75	<i>Eucalyptus viminalis</i>	Manna Gum	Indigenous	S mature	No	6m x 2m	22	Good	Good	20+ years	Medium	2.64	2.00	Remove
76	<i>Eucalyptus viminalis</i>	Manna Gum	Indigenous	S mature	No	4m x 2m	10	Fair	Good	10-20 years	Low	2	1.50	Remove
77	<i>Eucalyptus viminalis</i>	Manna Gum	Indigenous	S mature	No	6m x 2m	22	Good	Good	20+ years	Medium	2.64	2.00	Remove
78	<i>Juglans regia</i>	Walnut	Exotic	S mature	No	4m x 2m	11	Good	Good	20+ years	Low	2	1.50	Remove
79	<i>Juglans regia</i>	Walnut	Exotic	S mature	No	4m x 2m	11	Good	Good	20+ years	Low	2	1.50	Remove
80	<i>Juglans regia</i>	Walnut	Exotic	S mature	No	4m x 2m	11	Good	Good	20+ years	Low	2	1.50	Remove
81	<i>Juglans regia</i>	Walnut	Exotic	S mature	No	4m x 2m	11	Good	Good	20+ years	Low	2	1.50	Remove
82	<i>Carpinus betulus</i>	Hornbeam	Exotic	S mature	No	2m x 1m	5	Fair	Fair	20+ years	Low	2	1.50	Remove
83	<i>Carpinus betulus</i>	Hornbeam	Exotic	S mature	No	2m x 1m	5	Fair	Fair	20+ years	Low	2	1.50	Remove
84	<i>Malus domestica</i>	Apple	Exotic	Young	No	3m x 2m	6	Good	Good	20+ years	Low	2	1.50	Remove
85	<i>Pyrus calleryana</i>	Callery Pear	Exotic	S mature	No	6m x 5m	25	Good	Fair	10-20 years	Medium	3	1.91	Remove
86	<i>Quercus palustris</i>	Pin Oak	Exotic	S mature	No	12m x 6m	22	Good	Good	20+ years	Medium	2.64	1.97	Retain
87	<i>Fraxinus excelsior 'Aurea'</i>	Golden Ash	Exotic	S mature	No	5m x 3m	13	Good	Good	20+ years	Low	2	1.53	Retain
88	<i>Pinus radiata</i>	Monterey Pine	Exotic	Young	No	3m x 1m	7	Good	Good	20+ years	Low	2	1.50	Remove
89	<i>Pyrus calleryana</i>	Callery Pear	Exotic	Mature	No	0m x 5m	39	Good	Fair	20+ years	Medium	4.68	2.20	Remove
90	<i>Malus domestica</i>	Apple	Exotic	Young	No	3m x 1m	7	Good	Fair	20+ years	Low	2	1.50	Remove
91	<i>Eucalyptus sideroxylon</i>	Red Ironbark	Native	S mature	No	10m x 4m	37	Good	Fair	20+ years	Medium	4.44	2.20	Retain
92	<i>Eucalyptus camaldulensis</i>	River Red Gum	Indigenous	S mature	No	10m x 3m	25	Good	Fair	20+ years	Medium	3	2.05	Retain
93	<i>Eucalyptus sideroxylon</i>	Red Ironbark	Native	S mature	No	10m x 3m	25	Good	Good	20+ years	Medium	3	2.08	Retain
94	<i>Eucalyptus camaldulensis</i>	River Red Gum	Indigenous	S mature	No	10m x 3m	25	Good	Good	20+ years	Medium	3	2.10	Retain
95	<i>Eucalyptus ovata</i>	Swamp Gum	Indigenous	S mature	No	10m x 3m	35	Fair	Fair	20+ years	Medium	4.2	2.30	Retain
96	<i>Eucalyptus ovata</i>	Swamp Gum	Indigenous	S mature	No	12m x 6m	48	Good	Fair	20+ years	Medium	5.76	2.63	Retain
97	<i>Quercus palustris</i>	Pin Oak	Exotic	S mature	No	6m x 3m	16	Good	Good	20+ years	Medium	2	1.82	Retain
98	<i>Eucalyptus camaldulensis</i>	River Red Gum	Indigenous	S mature	No	10m x 4m	26	Good	Good	20+ years	Medium	3.12	2.13	Retain
99	<i>Quercus palustris</i>	Pin Oak	Exotic	S mature	No	6m x 3m	13	Good	Good	20+ years	Medium	2	1.68	Retain
100	<i>Eucalyptus viminalis</i>	Manna Gum	Indigenous	S mature	No	12m x 6m	46	Good	Good	20+ years	Medium	5.52	2.67	Retain
101	<i>Eucalyptus viminalis</i>	Manna Gum	Indigenous	S mature	No	10m x 5m	26	Good	Good	20+ years	Medium	3.12	2.15	Retain
102	<i>Eucalyptus viminalis</i>	Manna Gum	Indigenous	S mature	No	10m x 5m	28	Good	Fair	20+ years	Medium	3.36	2.25	Retain

ID	Botanical Name	Common Name	Origin	Age	Subject to 52.17	H x W	DBH (cm)	Health	Structure	ULE	Retention Value	TPZ (m radius)	SRZ (m radius)	Retain/Remove
103	<i>Eucalyptus ovata</i>	Swamp Gum	Indigenous	S mature	No	10m x 4m	26	Good	Very poor	1-5 years	Low	3.12	2.39	Retain
104	<i>Eucalyptus ovata</i>	Swamp Gum	Indigenous	S mature	No	12m x 4m	35	Good	Fair	20+ years	Medium	4.2	2.23	Retain
105	<i>Eucalyptus ovata</i>	Swamp Gum	Indigenous	S mature	No	12m x 5m	44	Good	Fair	20+ years	Medium	5.28	2.28	Retain
106	<i>Eucalyptus viminalis</i>	Manna Gum	Indigenous	S mature	No	14m x 6m	32	Good	Good	20+ years	Medium	3.84	2.30	Retain
107	<i>Eucalyptus viminalis</i>	Manna Gum	Indigenous	S mature	No	14m x 6m	38	Good	Good	20+ years	Medium	4.56	2.43	Retain
108	<i>Eucalyptus viminalis</i>	Manna Gum	Indigenous	S mature	No	14m x 4m	27	Good	Fair	20+ years	Medium	3.24	2.15	Retain
109	<i>Eucalyptus viminalis</i>	Manna Gum	Indigenous	S mature	No	14m x 4m	37	Good	Good	20+ years	Medium	4.44	2.43	Retain
110	<i>Eucalyptus nicholii</i>	Narrow-leaved Black Peppermint	Native	S mature	No	12m x 5m	29	Good	Good	20+ years	Medium	3.48	2.25	Retain
111	<i>Acacia dealbata</i>	Silver Wattle	Indigenous	S mature	No	7m x 6m	21	Good	Fair	20+ years	Medium	2.52	1.88	Retain
112	<i>Eucalyptus viminalis</i>	Manna Gum	Indigenous	S mature	No	10m x 4m	34	Good	Fair	20+ years	Medium	4.08	2.30	Retain
113	<i>Eucalyptus viminalis</i>	Manna Gum	Indigenous	S mature	No	12m x 3m	25	Good	Fair	20+ years	Medium	3	2.10	Retain
114	<i>Fraxinus excelsior 'Aurea'</i>	Golden Ash	Exotic	S mature	No	5m x 3m	11	Good	Good	20+ years	Low	2	1.53	Retain
115	<i>Eucalyptus sideroxylon</i>	Red Ironbark	Native	S mature	No	10m x 4m	33	Good	Fair	20+ years	Medium	3.96	2.28	Retain
116	<i>Eucalyptus camaldulensis</i>	River Red Gum	Indigenous	S mature	No	10m x 4m	25	Good	Good	20+ years	Medium	3	2.10	Retain
117	<i>Eucalyptus ovata</i>	Swamp Gum	Indigenous	S mature	No	12m x 5m	40	Good	Good	20+ years	Medium	4.8	2.25	Retain
118	<i>Eucalyptus ovata</i>	Swamp Gum	Indigenous	S mature	No	9m x 4m	25	Fair	Fair	10-20 years	Low	3	2.23	Retain
119	<i>Eucalyptus ovata</i>	Swamp Gum	Indigenous	S mature	No	13m x 6m	30	Good	Good	20+ years	Medium	3.6	2.39	Retain
120	<i>Eucalyptus ovata</i>	Swamp Gum	Indigenous	S mature	No	13m x 6m	33	Good	Good	20+ years	Medium	3.96	2.47	Retain
121	<i>Eucalyptus viminalis</i>	Manna Gum	Indigenous	S mature	No	11m x 4m	26	Good	Good	20+ years	Medium	3.12	2.10	Retain
122	<i>Hesperocyparis arizonica 'Glauc'</i>	Arizona Cypress	Exotic	Young	No	2m x 1m	6	Good	Good	20+ years	Low	2	1.50	Remove
123	<i>Quercus canariensis</i>	Algerian Oak	Exotic	Young	No	6m x 4m	15	Good	Good	20+ years	Third party	2	1.72	Retain
124	<i>Quercus canariensis</i>	Algerian Oak	Exotic	Young	No	6m x 4m	9	Good	Good	20+ years	Third party	2	1.50	Retain
125	<i>Quercus canariensis</i>	Algerian Oak	Exotic	Young	No	6m x 4m	11	Good	Good	20+ years	Third party	2	1.53	Retain

6.1 Individual Tree Details

Tree Number: 1



Botanical Name:	<i>Gleditsia triacanthos</i>	
Common Name:	Honey Locust	
Origin:	Exotic	
Tree Age:	Semi mature	DBH (cm): 15
H x W:	6m x 4m	TPZ (m): 2
Health:	Good	SRZ (m): 1.57
Structure:	Fair	
ULE:	20+ years	
Retention Value:	Medium	
Defects:	Broken branches throughout the canopy	
Comments:	Evidence of previous branch failure	

Tree Number: 2



Botanical Name:	<i>Gleditsia triacanthos</i>	
Common Name:	Honey Locust	
Origin:	Exotic	
Tree Age:	Semi mature	DBH (cm): 16
H x W:	6m x 4m	TPZ (m): 2
Health:	Good	SRZ (m): 1.68
Structure:	Fair	
ULE:	20+ years	
Retention Value:	Medium	
Defects:	Decay in main stem	
Comments:	Evidence of previous branch failure	

Tree Number: 3



Botanical Name:	<i>Gleditsia triacanthos</i>	
Common Name:	Honey Locust	
Origin:	Exotic	
Tree Age:	Semi mature	DBH (cm): 11
H x W:	6m x 4m	TPZ (m): 2
Health:	Good	SRZ (m): 1.50
Structure:	Fair	
ULE:	20+ years	
Retention Value:	Medium	
Defects:	None	
Comments:	Evidence of previous branch failure	

Tree Number: 4



Botanical Name: *Ulmus parvifolia*
Common Name: Chinese Elm
Origin: Exotic
Tree Age: Semi mature
H x W: 5m x 5m
Health: Good
Structure: Good
ULE: 20+ years
Retention Value: Medium
Defects: None

DBH (cm): 20
TPZ (m): 2.4
SRZ (m): 1.82

Comments:

Tree Number: 5



Botanical Name: *Ulmus parvifolia*
Common Name: Chinese Elm
Origin: Exotic
Tree Age: Semi mature
H x W: 5m x 6m
Health: Good
Structure: Good
ULE: 20+ years
Retention Value: Medium
Defects: None

DBH (cm): 19
TPZ (m): 2.28
SRZ (m): 1.85

Comments:

Tree Number: 6



Botanical Name: *Ulmus parvifolia*
Common Name: Chinese Elm
Origin: Exotic
Tree Age: Semi mature
H x W: 7m x 6m
Health: Good
Structure: Good
ULE: 20+ years
Retention Value: Medium
Defects: None

DBH (cm): 23
TPZ (m): 2.76
SRZ (m): 2.05

Comments:

Tree Number: 7



Botanical Name: *Acer rubrum*
Common Name: Red Maple
Origin: Exotic
Tree Age: Semi mature
H x W: 4m x 1m
Health: Good
Structure: Good
ULE: 20+ years
Retention Value: Low
Defects: None

DBH (cm): 7
TPZ (m): 2
SRZ (m): 1.50

Comments:

Tree Number: 8



Botanical Name: *Acer rubrum*
Common Name: Red Maple
Origin: Exotic
Tree Age: Semi mature
H x W: 4m x 1m
Health: Good
Structure: Good
ULE: 20+ years
Retention Value: Low
Defects: None

DBH (cm): 7
TPZ (m): 2
SRZ (m): 1.50

Comments:

Tree Number: 9



Botanical Name: *Acer rubrum*
Common Name: Red Maple
Origin: Exotic
Tree Age: Semi mature
H x W: 4m x 1m
Health: Good
Structure: Good
ULE: 20+ years
Retention Value: Low
Defects: None

DBH (cm): 7
TPZ (m): 2
SRZ (m): 1.50

Comments:

Tree Number: 10

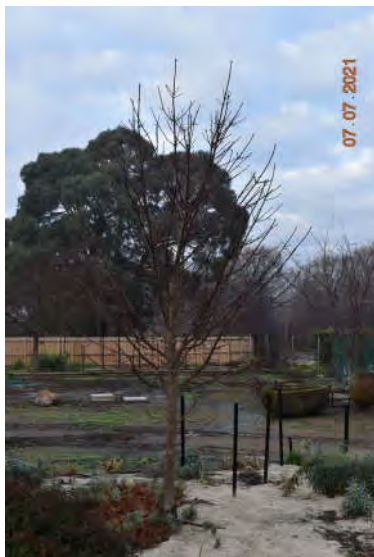


Botanical Name: *Acer rubrum*
Common Name: Red Maple
Origin: Exotic
Tree Age: Semi mature
H x W: 4m x 1m
Health: Good
Structure: Good
ULE: 20+ years
Retention Value: Low
Defects: None

DBH (cm): 6
TPZ (m): 2
SRZ (m): 1.50

Comments:

Tree Number: 11



Botanical Name: *Acer rubrum*
Common Name: Red Maple
Origin: Exotic
Tree Age: Semi mature
H x W: 4m x 1m
Health: Good
Structure: Good
ULE: 20+ years
Retention Value: Low
Defects: None

DBH (cm): 6
TPZ (m): 2
SRZ (m): 1.50

Comments:

Tree Number: 12



Botanical Name: *Prunus cerasifera*
Common Name: Cherry Plum
Origin: Exotic
Tree Age: Semi mature
H x W: 6m x 5m
Health: Good
Structure: Fair
ULE: 10-20 years
Retention Value: Low
Defects: None

DBH (cm): 16
TPZ (m): 2
SRZ (m): 1.68

Comments:

Tree Number: 13



Botanical Name: *Pyrus calleryana*
Common Name: Callery Pear
Origin: Exotic
Tree Age: Semi mature
H x W: 6m x 5m
Health: Fair
Structure: Very poor
ULE: 1-5 years
Retention Value: Low
Defects: Lopped, decayed main stem

DBH (cm): 9
TPZ (m): 2
SRZ (m): 1.65

Comments: Evidence of previous branch failure

Tree Number: 14

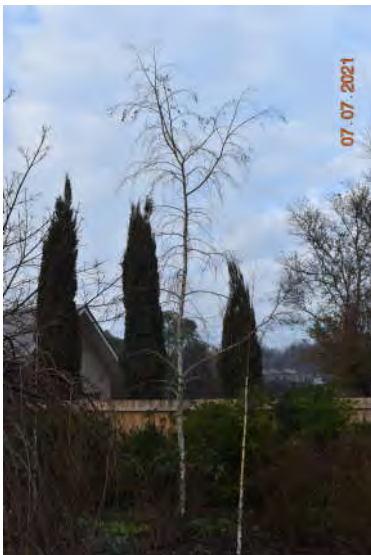


Botanical Name: *Acer rubrum*
Common Name: Red Maple
Origin: Exotic
Tree Age: Semi mature
H x W: 5m x 3m
Health: Good
Structure: Good
ULE: 20+ years
Retention Value: Medium
Defects: None

DBH (cm): 13
TPZ (m): 2
SRZ (m): 1.53

Comments:

Tree Number: 15



Botanical Name: *Betula pendula*
Common Name: Silver Birch
Origin: Exotic
Tree Age: Semi mature
H x W: 7m x 2m
Health: Good
Structure: Good
ULE: 20+ years
Retention Value: Medium
Defects: None

DBH (cm): 10
TPZ (m): 2
SRZ (m): 1.50

Comments:

Tree Number: 16

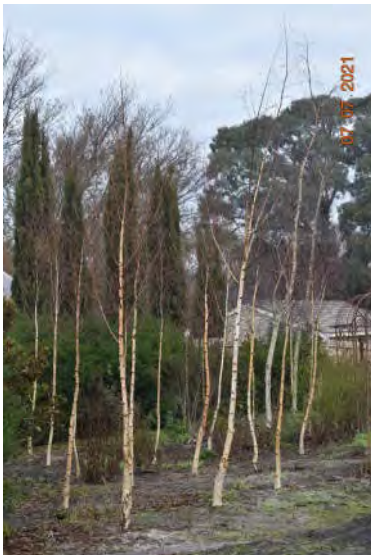


Botanical Name: *Betula pendula*
Common Name: Silver Birch
Origin: Exotic
Tree Age: Semi mature
H x W: 7m x 2m
Health: Good
Structure: Good
ULE: 20+ years
Retention Value: Medium
Defects: None

DBH (cm): 10
TPZ (m): 2
SRZ (m): 1.50

Comments:

Tree Number: 17



Botanical Name: *Betula pendula*
Common Name: Silver Birch
Origin: Exotic
Tree Age: Young
H x W: 3m x 1m
Health: Good
Structure: Fair
ULE: 20+ years
Retention Value: Low
Defects: None

DBH (cm): 3
TPZ (m): 2
SRZ (m): 1.50

Comments: Group of approximately 23 individuals

Tree Number: 18



Botanical Name: *Quercus palustris*
Common Name: Pin Oak
Origin: Exotic
Tree Age: Semi mature
H x W: 11m x 4m
Health: Good
Structure: Good
ULE: 20+ years
Retention Value: Medium
Defects: None

DBH (cm): 21
TPZ (m): 2.52
SRZ (m): 2.05

Comments:

Tree Number: 19



Botanical Name: *Pyrus ussuriensis*
Common Name: Manchurian Pear
Origin: Exotic
Tree Age: Semi mature
H x W: 6m x 6m
Health: Good
Structure: Fair
ULE: 20+ years
Retention Value: Medium
Defects: None

DBH (cm): 18
TPZ (m): 2.16
SRZ (m): 1.72

Comments:

Tree Number: 20



Botanical Name: *Platanus Xacerifolia*
Common Name: London Plane
Origin: Exotic
Tree Age: Young
H x W: 4m x 1m
Health: Good
Structure: Fair
ULE: 20+ years
Retention Value: Low
Defects: None

DBH (cm): 4
TPZ (m): 2
SRZ (m): 1.50

Comments:

Tree Number: 21



Botanical Name: *Platanus Xacerifolia*
Common Name: London Plane
Origin: Exotic
Tree Age: Semi mature
H x W: 6m x 4m
Health: Good
Structure: Fair
ULE: 20+ years
Retention Value: Medium
Defects: Codominant stems with included union

DBH (cm): 13
TPZ (m): 2
SRZ (m): 1.75

Comments:

Tree Number: 22

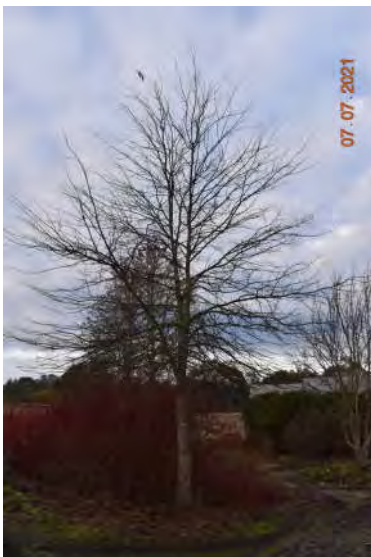


Botanical Name: *Buddleja davidii*
Common Name: Butterfly Bush
Origin: Exotic
Tree Age: Semi mature
H x W: 4m x 4m
Health: Good
Structure: Fair
ULE: 10-20 years
Retention Value: Low
Defects: None

DBH (cm): 10
TPZ (m): 2
SRZ (m): 1.94

Comments:

Tree Number: 23



Botanical Name: *Quercus palustris*
Common Name: Pin Oak
Origin: Exotic
Tree Age: Semi mature
H x W: 11m x 5m
Health: Good
Structure: Fair
ULE: 20+ years
Retention Value: Medium
Defects: Codominant stems with included union

DBH (cm): 21
TPZ (m): 2.52
SRZ (m): 2.05

Comments:

Tree Number: 24



Botanical Name: *Pyrus calleryana*
Common Name: Callery Pear
Origin: Exotic
Tree Age: Semi mature
H x W: 7m x 5m
Health: Good
Structure: Fair
ULE: 20+ years
Retention Value: Medium
Defects: Leaning main stem

DBH (cm): 22
TPZ (m): 2.64
SRZ (m): 1.94

Comments:

Tree Number: 25



Botanical Name: *Fraxinus excelsior 'Aurea'*
Common Name: Golden Ash
Origin: Exotic
Tree Age: Semi mature
H x W: 5m x 3m
Health: Good
Structure: Good
ULE: 20+ years
Retention Value: Low
Defects: None

DBH (cm): 7
TPZ (m): 2
SRZ (m): 1.53

Comments:

Tree Number: 26



Botanical Name: *Populus nigra 'Italica'*
Common Name: Lombardy Poplar
Origin: Exotic
Tree Age: Semi mature
H x W: 11m x 2m
Health: Good
Structure: Fair
ULE: 20+ years
Retention Value: Medium
Defects: None

DBH (cm): 21
TPZ (m): 2.52
SRZ (m): 2.39

Comments:

Tree Number: 27



Botanical Name: *Populus nigra 'Italica'*
Common Name: Lombardy Poplar
Origin: Exotic
Tree Age: Semi mature
H x W: 10m x 2m
Health: Good
Structure: Fair
ULE: 20+ years
Retention Value: Medium
Defects: None

DBH (cm): 21
TPZ (m): 2.52
SRZ (m): 2.34

Comments:

Tree Number: 28



Botanical Name: *Malus domestica*
Common Name: Apple
Origin: Exotic
Tree Age: Semi mature
H x W: 5m x 6m
Health: Good
Structure: Fair
ULE: 20+ years
Retention Value: Low
Defects: None

DBH (cm):	20
TPZ (m):	2.4
SRZ (m):	1.75

Comments:

Tree Number: 29



Botanical Name: *Malus domestica*
Common Name: Apple
Origin: Exotic
Tree Age: Semi mature
H x W: 5m x 6m
Health: Good
Structure: Fair
ULE: 20+ years
Retention Value: Low
Defects: None

DBH (cm):	21
TPZ (m):	2.52
SRZ (m):	1.88

Comments:

Tree Number: 30

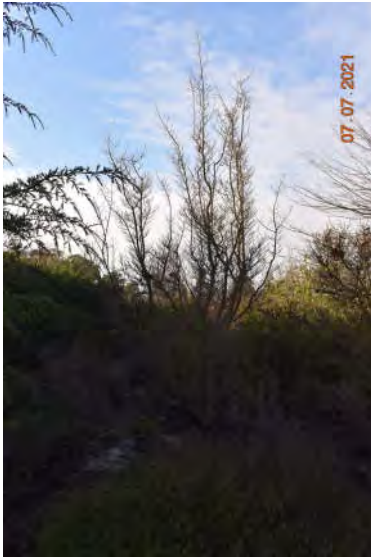


Botanical Name: *Cedrus deodara*
Common Name: Deodar Cedar
Origin: Exotic
Tree Age: Semi mature
H x W: 6m x 3m
Health: Good
Structure: Fair
ULE: 20+ years
Retention Value: Low
Defects: Codominant stems with included union

DBH (cm):	18
TPZ (m):	2.16
SRZ (m):	1.79

Comments:

Tree Number: 31



Botanical Name: *Prunus cerasifera 'Nigra'*
Common Name: Purple Cherry Plum
Origin: Exotic
Tree Age: Semi mature
H x W: 5m x 2m
Health: Good
Structure: Fair
ULE: 10-20 years
Retention Value: Low
Defects: Codominant, leaning stems

DBH (cm):	9
TPZ (m):	2
SRZ (m):	1.50

Comments:

Tree Number: 32



Botanical Name: *Malus ioensis 'Plena'*
Common Name: Prairie Crabapple
Origin: Exotic
Tree Age: Semi mature
H x W: 4m x 3m
Health: Good
Structure: Good
ULE: 20+ years
Retention Value: Medium
Defects: None

DBH (cm):	21
TPZ (m):	2.52
SRZ (m):	1.91

Comments:

Tree Number: 33



Botanical Name: *Malus ioensis 'Plena'*
Common Name: Prairie Crabapple
Origin: Exotic
Tree Age: Semi mature
H x W: 3m x 3m
Health: Good
Structure: Good
ULE: 20+ years
Retention Value: Low
Defects: None

DBH (cm):	20
TPZ (m):	2.4
SRZ (m):	1.68

Comments:

Tree Number: 34



Botanical Name: *Platanus orientalis* 'Digitata'
Common Name: Cut-leaf Plane
Origin: Exotic
Tree Age: Semi mature
H x W: 12m x 6m
Health: Good
Structure: Good
ULE: 20+ years
Retention Value: Medium
Defects: None

DBH (cm): 31
TPZ (m): 3.72
SRZ (m): 2.28

Comments:

Tree Number: 35



Botanical Name: *Platanus orientalis* 'Digitata'
Common Name: Cut-leaf Plane
Origin: Exotic
Tree Age: Semi mature
H x W: 12m x 6m
Health: Good
Structure: Good
ULE: 20+ years
Retention Value: Medium
Defects: None

DBH (cm): 34
TPZ (m): 4.08
SRZ (m): 2.34

Comments:

Tree Number: 36

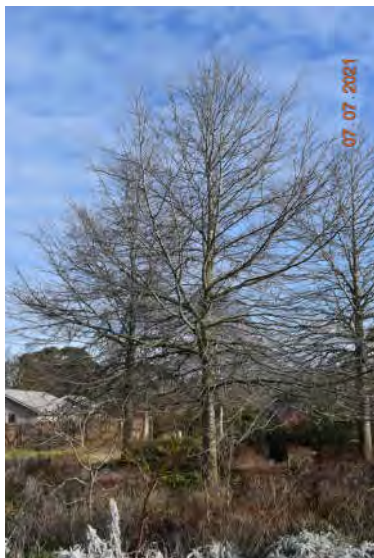


Botanical Name: *Quercus palustris*
Common Name: Pin Oak
Origin: Exotic
Tree Age: Semi mature
H x W: 12m x 6m
Health: Good
Structure: Good
ULE: 20+ years
Retention Value: Medium
Defects: None

DBH (cm): 32
TPZ (m): 3.84
SRZ (m): 2.34

Comments:

Tree Number: 37



Botanical Name: *Quercus palustris*
Common Name: Pin Oak
Origin: Exotic
Tree Age: Semi mature
H x W: 12m x 6m
Health: Good
Structure: Good
ULE: 20+ years
Retention Value: Medium
Defects: None

DBH (cm): 29
TPZ (m): 3.48
SRZ (m): 2.28

Comments:

Tree Number: 38



Botanical Name: *Quercus palustris*
Common Name: Pin Oak
Origin: Exotic
Tree Age: Semi mature
H x W: 12m x 6m
Health: Good
Structure: Good
ULE: 20+ years
Retention Value: Medium
Defects: None

DBH (cm): 32
TPZ (m): 3.84
SRZ (m): 2.37

Comments:

Tree Number: 39



Botanical Name: *Cedrus deodara*
Common Name: Deodar Cedar
Origin: Exotic
Tree Age: Semi mature
H x W: 4m x 1m
Health: Good
Structure: Good
ULE: 20+ years
Retention Value: Low
Defects: None

DBH (cm): 9
TPZ (m): 2
SRZ (m): 1.50

Comments:

Tree Number: 40



Botanical Name: *Fraxinus oxycarpa*
Common Name: Desert Ash
Origin: Exotic
Tree Age: Semi mature
H x W: 7m x 5m
Health: Good
Structure: Good
ULE: 20+ years
Retention Value: Medium
Defects: None

DBH (cm): 21
TPZ (m): 2.52
SRZ (m): 1.82

Comments:

Tree Number: 41

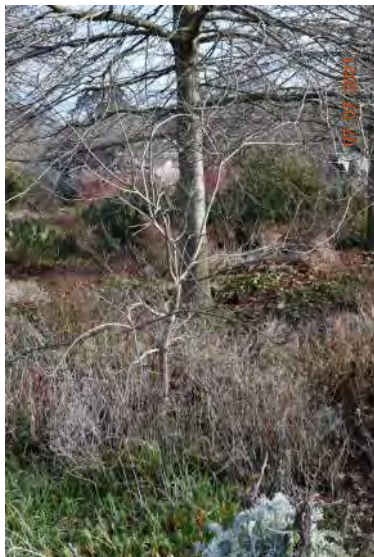


Botanical Name: *Eucalyptus pauciflora*
Common Name: Snow Gum
Origin: Indigenous
Tree Age: Semi mature
H x W: 6m x 3m
Health: Good
Structure: Fair
ULE: 20+ years
Retention Value: Medium
Defects: Codominant stems

DBH (cm): 16
TPZ (m): 2
SRZ (m): 1.72

Comments:

Tree Number: 42



Botanical Name: *Fraxinus oxycarpa*
Common Name: Desert Ash
Origin: Exotic
Tree Age: Young
H x W: 3m x 1m
Health: Fair
Structure: Fair
ULE: 10-20 years
Retention Value: Low
Defects: None

DBH (cm): 7
TPZ (m): 2
SRZ (m): 1.50

Comments: Group of approximately 13 individuals

Tree Number: 43



Botanical Name: *Hesperocyparis macrocarpa*
Common Name: Monterey Cypress
Origin: Exotic
Tree Age: Semi mature
H x W: 5m x 4m
Health: Good
Structure: Fair
ULE: 20+ years
Retention Value: Medium
Defects: None

DBH (cm):	22
TPZ (m):	2.64
SRZ (m):	2.05

Comments:

Tree Number: 44



Botanical Name: *Hesperocyparis macrocarpa*
Common Name: Monterey Cypress
Origin: Exotic
Tree Age: Semi mature
H x W: 5m x 4m
Health: Good
Structure: Fair
ULE: 20+ years
Retention Value: Medium
Defects: None

DBH (cm):	23
TPZ (m):	2.76
SRZ (m):	2.30

Comments:

Tree Number: 45



Botanical Name: *Hesperocyparis macrocarpa*
Common Name: Monterey Cypress
Origin: Exotic
Tree Age: Semi mature
H x W: 8m x 5m
Health: Good
Structure: Fair
ULE: 20+ years
Retention Value: Medium
Defects: None

DBH (cm):	26
TPZ (m):	3.12
SRZ (m):	2.32

Comments:

Tree Number: 46



Botanical Name: *Hesperocyparis macrocarpa*
Common Name: Monterey Cypress
Origin: Exotic
Tree Age: Semi mature
H x W: 5m x 6m
Health: Good
Structure: Fair
ULE: 20+ years
Retention Value: Medium
Defects: None

DBH (cm):	30
TPZ (m):	3.6
SRZ (m):	2.30

Comments:

Tree Number: 47



Botanical Name: *Hesperocyparis macrocarpa*
Common Name: Monterey Cypress
Origin: Exotic
Tree Age: Semi mature
H x W: 8m x 5m
Health: Good
Structure: Fair
ULE: 20+ years
Retention Value: Medium
Defects: None

DBH (cm):	30
TPZ (m):	3.6
SRZ (m):	2.43

Comments:

Tree Number: 48



Botanical Name: *Eucalyptus camaldulensis*
Common Name: River Red Gum
Origin: Indigenous
Tree Age: Semi mature
H x W: 7m x 4m
Health: Good
Structure: Fair
ULE: 20+ years
Retention Value: Medium
Defects: None

DBH (cm):	31
TPZ (m):	3.72
SRZ (m):	2.10

Comments:

Tree Number: 49



Botanical Name: *Buddleja davidii*
Common Name: Butterfly Bush
Origin: Exotic
Tree Age: Semi mature
H x W: 3m x 3m
Health: Good
Structure: Good
ULE: 10-20 years
Retention Value: Low
Defects: None

DBH (cm): 10
TPZ (m): 2
SRZ (m): 1.50

Comments:

Tree Number: 50



Botanical Name: *Buddleja davidii*
Common Name: Butterfly Bush
Origin: Exotic
Tree Age: Semi mature
H x W: 2m x 2m
Health: Fair
Structure: Fair
ULE: 10-20 years
Retention Value: Low
Defects: None

DBH (cm): 3
TPZ (m): 2
SRZ (m): 1.50

Comments: Group of approximately 16 individuals

Tree Number: 51

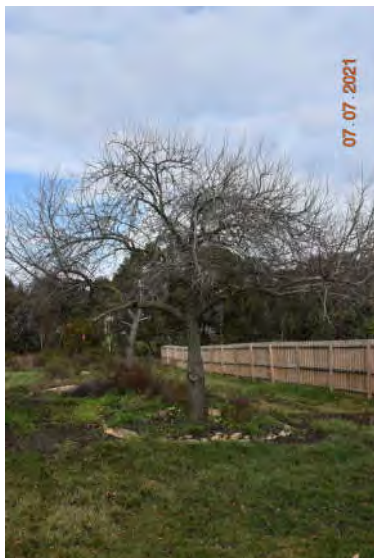


Botanical Name: *Malus domestica*
Common Name: Apple
Origin: Exotic
Tree Age: Semi mature
H x W: 3m x 2m
Health: Fair
Structure: Fair
ULE: 10-20 years
Retention Value: Low
Defects: None

DBH (cm): 12
TPZ (m): 2
SRZ (m): 1.53

Comments: Group of approximately 3 individuals

Tree Number: 52



Botanical Name: *Pyrus calleryana*
Common Name: Callery Pear
Origin: Exotic
Tree Age: Semi mature
H x W: 6m x 8m
Health: Fair
Structure: Fair
ULE: 10-20 years
Retention Value: Medium
Defects: None

DBH (cm): 30
TPZ (m): 3.6
SRZ (m): 2.15

Comments:

Tree Number: 53



Botanical Name: *Pyrus calleryana*
Common Name: Callery Pear
Origin: Exotic
Tree Age: Semi mature
H x W: 3m x 2m
Health: Fair
Structure: Poor
ULE: 5-10 years
Retention Value: Low
Defects: Lopped main stem

DBH (cm): 10
TPZ (m): 2
SRZ (m): 1.50

Comments:

Tree Number: 54



Botanical Name: *Pyrus calleryana*
Common Name: Callery Pear
Origin: Exotic
Tree Age: Young
H x W: 2m x 2m
Health: Fair
Structure: Fair
ULE: 10-20 years
Retention Value: Low
Defects: None

DBH (cm): 3
TPZ (m): 2
SRZ (m): 1.50

Comments:

Tree Number: 55



Botanical Name: *xCupressocyparis leylandii*
Common Name: Leyland Cypress
Origin: Exotic
Tree Age: Semi mature
H x W: 5m x 3m
Health: Good
Structure: Fair
ULE: 10-20 years
Retention Value: Low
Defects: None

DBH (cm):	14
TPZ (m):	2
SRZ (m):	1.75

Comments:

Tree Number: 56



Botanical Name: *Eucalyptus leucoxydon*
Common Name: Yellow Gum
Origin: Indigenous
Tree Age: Semi mature
H x W: 5m x 4m
Health: Very Poor
Structure: Fair
ULE: 1-5 years
Retention Value: Low
Defects: None

DBH (cm):	16
TPZ (m):	2
SRZ (m):	1.82

Comments:

Tree Number: 57



Botanical Name: *Eucalyptus leucoxydon*
Common Name: Yellow Gum
Origin: Indigenous
Tree Age: Semi mature
H x W: 5m x 5m
Health: Good
Structure: Fair
ULE: 20+ years
Retention Value: Medium
Defects: None

DBH (cm):	22
TPZ (m):	2.64
SRZ (m):	1.94

Comments:

Tree Number: 58



Botanical Name: *Eucalyptus viminalis*
Common Name: Manna Gum
Origin: Indigenous
Tree Age: Semi mature
H x W: 10m x 5m
Health: Good
Structure: Good
ULE: 20+ years
Retention Value: Medium
Defects: None

DBH (cm): 39
TPZ (m): 4.68
SRZ (m): 2.49

Comments:

Tree Number: 59



Botanical Name: *Eucalyptus viminalis*
Common Name: Manna Gum
Origin: Indigenous
Tree Age: Semi mature
H x W: 10m x 6m
Health: Good
Structure: Good
ULE: 20+ years
Retention Value: Medium
Defects: None

DBH (cm): 38
TPZ (m): 4.56
SRZ (m): 2.34

Comments:

Tree Number: 60



Botanical Name: *Eucalyptus viminalis*
Common Name: Manna Gum
Origin: Indigenous
Tree Age: Semi mature
H x W: 10m x 2m
Health: Good
Structure: Fair
ULE: 20+ years
Retention Value: Medium
Defects: None

DBH (cm): 24
TPZ (m): 2.88
SRZ (m): 2.10

Comments:

Tree Number: 61



Botanical Name: *Eucalyptus viminialis*
Common Name: Manna Gum
Origin: Indigenous
Tree Age: Semi mature
H x W: 10m x 5m
Health: Good
Structure: Fair
ULE: 20+ years
Retention Value: Medium
Defects: Codominant stems

DBH (cm): 36
TPZ (m): 4.32
SRZ (m): 2.30

Comments:

Tree Number: 62



Botanical Name: *Eucalyptus viminialis*
Common Name: Manna Gum
Origin: Indigenous
Tree Age: Semi mature
H x W: 10m x 3m
Health: Dead
Structure: Poor
ULE: 0 years
Retention Value: Low
Defects: None

DBH (cm): 24
TPZ (m): 2.88
SRZ (m): 2.05

Comments:

Tree Number: 63



Botanical Name: *Eucalyptus viminialis*
Common Name: Manna Gum
Origin: Indigenous
Tree Age: Semi mature
H x W: 9m x 4m
Health: Good
Structure: Good
ULE: 20+ years
Retention Value: Medium
Defects: None

DBH (cm): 23
TPZ (m): 2.76
SRZ (m): 2.05

Comments:

Tree Number: 64



Botanical Name:	<i>Eucalyptus viminalis</i>	
Common Name:	Manna Gum	
Origin:	Indigenous	
Tree Age:	Semi mature	DBH (cm): 23
H x W:	9m x 4m	TPZ (m): 2.76
Health:	Good	SRZ (m): 1.97
Structure:	Fair	
ULE:	10-20 years	
Retention Value:	Medium	
Defects:	Broken branches throughout the canopy	
Comments:	Evidence of previous branch failure, soil built up around base	

Tree Number: 65



Botanical Name:	<i>Eucalyptus viminalis</i>	
Common Name:	Manna Gum	
Origin:	Indigenous	
Tree Age:	Semi mature	DBH (cm): 18
H x W:	5m x 3m	TPZ (m): 2.16
Health:	Good	SRZ (m): 1.82
Structure:	Fair	
ULE:	10-20 years	
Retention Value:	Low	
Defects:	None	
Comments:		

Tree Number: 66



Botanical Name:	<i>Malus domestica</i>	
Common Name:	Apple	
Origin:	Exotic	
Tree Age:	Semi mature	DBH (cm): 19
H x W:	5m x 5m	TPZ (m): 2.28
Health:	Good	SRZ (m): 1.79
Structure:	Fair	
ULE:	10-20 years	
Retention Value:	Low	
Defects:	None	
Comments:		

Tree Number: 67



Botanical Name: *Acacia melanoxylon*
Common Name: Blackwood
Origin: Indigenous
Tree Age: Young
H x W: 4m x 2m
Health: Good
Structure: Fair
ULE: 20+ years
Retention Value: Low
Defects: None

DBH (cm): 9
TPZ (m): 2
SRZ (m): 1.50

Comments: Group of approximately 14 individuals, Blackwood and mixed exotic species

Tree Number: 68



Botanical Name: *Hesperocyparis macrocarpa*
Common Name: Monterey Cypress
Origin: Exotic
Tree Age: Semi mature
H x W: 5m x 2m
Health: Good
Structure: Good
ULE: 20+ years
Retention Value: Low
Defects: None

DBH (cm): 10
TPZ (m): 2
SRZ (m): 1.50

Comments: Group of approximately 14 individuals

Tree Number: 69



Botanical Name: *Pyrus calleryana*
Common Name: Callery Pear
Origin: Exotic
Tree Age: Semi mature
H x W: 4m x 2m
Health: Good
Structure: Good
ULE: 20+ years
Retention Value: Low
Defects: None

DBH (cm): 9
TPZ (m): 2
SRZ (m): 1.50

Comments: Group of approximately 4 individuals

Tree Number: 70



Botanical Name: *Pyrus ussuriensis*
Common Name: Manchurian Pear
Origin: Exotic
Tree Age: Semi mature
H x W: 3m x 2m
Health: Good
Structure: Good
ULE: 20+ years
Retention Value: Low
Defects: None

DBH (cm): 11
TPZ (m): 2
SRZ (m): 1.50

Comments: Group of approximately 3 individuals

Tree Number: 71



Botanical Name: *Hesperocyparis macrocarpa*
Common Name: Monterey Cypress
Origin: Exotic
Tree Age: Semi mature
H x W: 6m x 3m
Health: Good
Structure: Good
ULE: 20+ years
Retention Value: Low
Defects: None

DBH (cm): 16
TPZ (m): 2
SRZ (m): 1.68

Comments: Group of approximately 24 individuals

Tree Number: 72



Botanical Name: *Eucalyptus viminalis*
Common Name: Manna Gum
Origin: Indigenous
Tree Age: Semi mature
H x W: 6m x 2m
Health: Good
Structure: Good
ULE: 20+ years
Retention Value: Medium
Defects: None

DBH (cm): 21
TPZ (m): 2.52
SRZ (m): 1.94

Comments: Group of approximately 3 individuals

Tree Number: 73



Botanical Name: *Eucalyptus viminalis*
Common Name: Manna Gum
Origin: Indigenous
Tree Age: Semi mature
H x W: 6m x 2m
Health: Good
Structure: Good
ULE: 20+ years
Retention Value: Medium
Defects: None

DBH (cm):	20
TPZ (m):	2.4
SRZ (m):	1.91

Comments: Group of approximately 2 individuals

Tree Number: 74



Botanical Name: *Eucalyptus viminalis*
Common Name: Manna Gum
Origin: Indigenous
Tree Age: Semi mature
H x W: 6m x 2m
Health: Good
Structure: Fair
ULE: 20+ years
Retention Value: Medium
Defects: None

DBH (cm):	14
TPZ (m):	2
SRZ (m):	1.65

Comments: Group of approximately 5 individuals

Tree Number: 75



Botanical Name: *Eucalyptus viminalis*
Common Name: Manna Gum
Origin: Indigenous
Tree Age: Semi mature
H x W: 6m x 2m
Health: Good
Structure: Good
ULE: 20+ years
Retention Value: Medium
Defects: None

DBH (cm):	22
TPZ (m):	2.64
SRZ (m):	2.00

Comments: Group of approximately 10 individuals

Tree Number: 76



Botanical Name: *Eucalyptus viminalis*
Common Name: Manna Gum
Origin: Indigenous
Tree Age: Semi mature
H x W: 4m x 2m
Health: Fair
Structure: Good
ULE: 10-20 years
Retention Value: Low
Defects: None

DBH (cm): 10
TPZ (m): 2
SRZ (m): 1.50

Comments:

Tree Number: 77



Botanical Name: *Eucalyptus viminalis*
Common Name: Manna Gum
Origin: Indigenous
Tree Age: Semi mature
H x W: 6m x 2m
Health: Good
Structure: Good
ULE: 20+ years
Retention Value: Medium
Defects: None

DBH (cm): 22
TPZ (m): 2.64
SRZ (m): 2.00

Comments: Group of approximately 7 individuals

Tree Number: 78



Botanical Name: *Juglans regia*
Common Name: Walnut
Origin: Exotic
Tree Age: Semi mature
H x W: 4m x 2m
Health: Good
Structure: Good
ULE: 20+ years
Retention Value: Low
Defects: None

DBH (cm): 11
TPZ (m): 2
SRZ (m): 1.50

Comments: Group of approximately 4 individuals

Tree Number: 79



Botanical Name: *Juglans regia*
Common Name: Walnut
Origin: Exotic
Tree Age: Semi mature
H x W: 4m x 2m
Health: Good
Structure: Good
ULE: 20+ years
Retention Value: Low
Defects: None

DBH (cm): 11
TPZ (m): 2
SRZ (m): 1.50

Comments: Group of approximately 4 individuals

Tree Number: 80



Botanical Name: *Juglans regia*
Common Name: Walnut
Origin: Exotic
Tree Age: Semi mature
H x W: 4m x 2m
Health: Good
Structure: Good
ULE: 20+ years
Retention Value: Low
Defects: None

DBH (cm): 11
TPZ (m): 2
SRZ (m): 1.50

Comments: Group of approximately 4 individuals

Tree Number: 81



Botanical Name: *Juglans regia*
Common Name: Walnut
Origin: Exotic
Tree Age: Semi mature
H x W: 4m x 2m
Health: Good
Structure: Good
ULE: 20+ years
Retention Value: Low
Defects: None

DBH (cm): 11
TPZ (m): 2
SRZ (m): 1.50

Comments: Group of approximately 4 individuals

Tree Number: 82



Botanical Name: *Carpinus betulus*
Common Name: Hornbeam
Origin: Exotic
Tree Age: Semi mature
H x W: 2m x 1m
Health: Fair
Structure: Fair
ULE: 20+ years
Retention Value: Low
Defects: None

DBH (cm):
5
TPZ (m):
2
SRZ (m):
1.50

Comments: Group of approximately 30 individuals

Tree Number: 83



Botanical Name: *Carpinus betulus*
Common Name: Hornbeam
Origin: Exotic
Tree Age: Semi mature
H x W: 2m x 1m
Health: Fair
Structure: Fair
ULE: 20+ years
Retention Value: Low
Defects: None

DBH (cm):
5
TPZ (m):
2
SRZ (m):
1.50

Comments: Group of approximately 30 individuals

Tree Number: 84



Botanical Name: *Malus domestica*
Common Name: Apple
Origin: Exotic
Tree Age: Young
H x W: 3m x 2m
Health: Good
Structure: Good
ULE: 20+ years
Retention Value: Low
Defects: None

DBH (cm):
6
TPZ (m):
2
SRZ (m):
1.50

Comments: Group of approximately 6 individuals

Tree Number: 85



Botanical Name: *Pyrus calleryana*
Common Name: Callery Pear
Origin: Exotic
Tree Age: Semi mature
H x W: 6m x 5m
Health: Good
Structure: Fair
ULE: 10-20 years
Retention Value: Medium
Defects: None

DBH (cm): 25
TPZ (m): 3
SRZ (m): 1.91

Comments: Evidence of previous branch failure

Tree Number: 86



Botanical Name: *Quercus palustris*
Common Name: Pin Oak
Origin: Exotic
Tree Age: Semi mature
H x W: 12m x 6m
Health: Good
Structure: Good
ULE: 20+ years
Retention Value: Medium
Defects: None

DBH (cm): 22
TPZ (m): 2.64
SRZ (m): 1.97

Comments:

Tree Number: 87



Botanical Name: *Fraxinus excelsior 'Aurea'*
Common Name: Golden Ash
Origin: Exotic
Tree Age: Semi mature
H x W: 5m x 3m
Health: Good
Structure: Good
ULE: 20+ years
Retention Value: Low
Defects: None

DBH (cm): 13
TPZ (m): 2
SRZ (m): 1.53

Comments:

Tree Number: 88



Botanical Name: *Pinus radiata*
Common Name: Monterey Pine
Origin: Exotic
Tree Age: Young
H x W: 3m x 1m
Health: Good
Structure: Good
ULE: 20+ years
Retention Value: Low
Defects: None

DBH (cm): 7
TPZ (m): 2
SRZ (m): 1.50

Comments:

Tree Number: 89



Botanical Name: *Pyrus calleryana*
Common Name: Callery Pear
Origin: Exotic
Tree Age: Mature
H x W: 0m x 5m
Health: Good
Structure: Fair
ULE: 20+ years
Retention Value: Medium
Defects: None

DBH (cm): 39
TPZ (m): 4.68
SRZ (m): 2.20

Comments:

Tree Number: 90



Botanical Name: *Malus domestica*
Common Name: Apple
Origin: Exotic
Tree Age: Young
H x W: 3m x 1m
Health: Good
Structure: Fair
ULE: 20+ years
Retention Value: Low
Defects: None

DBH (cm): 7
TPZ (m): 2
SRZ (m): 1.50

Comments: Group of approximately 3 individuals

Tree Number: 91



Botanical Name: *Eucalyptus sideroxylon*
Common Name: Red Ironbark
Origin: Native
Tree Age: Semi mature
H x W: 10m x 4m
Health: Good
Structure: Fair
ULE: 20+ years
Retention Value: Medium
Defects: Codominant stems with included union

DBH (cm):	37
TPZ (m):	4.44
SRZ (m):	2.20

Comments:

Tree Number: 92



Botanical Name: *Eucalyptus camaldulensis*
Common Name: River Red Gum
Origin: Indigenous
Tree Age: Semi mature
H x W: 10m x 3m
Health: Good
Structure: Fair
ULE: 20+ years
Retention Value: Medium
Defects: Codominant stems with included union

DBH (cm):	25
TPZ (m):	3
SRZ (m):	2.05

Comments:

Tree Number: 93



Botanical Name: *Eucalyptus sideroxylon*
Common Name: Red Ironbark
Origin: Native
Tree Age: Semi mature
H x W: 10m x 3m
Health: Good
Structure: Good
ULE: 20+ years
Retention Value: Medium
Defects: Included union

DBH (cm):	25
TPZ (m):	3
SRZ (m):	2.08

Comments:

Tree Number: 94



Botanical Name: *Eucalyptus camaldulensis*
Common Name: River Red Gum
Origin: Indigenous
Tree Age: Semi mature
H x W: 10m x 3m
Health: Good
Structure: Good
ULE: 20+ years
Retention Value: Medium
Defects: None

DBH (cm): 25
TPZ (m): 3
SRZ (m): 2.10

Comments:

Tree Number: 95



Botanical Name: *Eucalyptus ovata*
Common Name: Swamp Gum
Origin: Indigenous
Tree Age: Semi mature
H x W: 10m x 3m
Health: Fair
Structure: Fair
ULE: 20+ years
Retention Value: Medium
Defects: None

DBH (cm): 35
TPZ (m): 4.2
SRZ (m): 2.30

Comments:

Tree Number: 96



Botanical Name: *Eucalyptus ovata*
Common Name: Swamp Gum
Origin: Indigenous
Tree Age: Semi mature
H x W: 12m x 6m
Health: Good
Structure: Fair
ULE: 20+ years
Retention Value: Medium
Defects: None

DBH (cm): 48
TPZ (m): 5.76
SRZ (m): 2.63

Comments:

Tree Number: 97



Botanical Name: *Quercus palustris*
Common Name: Pin Oak
Origin: Exotic
Tree Age: Semi mature
H x W: 6m x 3m
Health: Good
Structure: Good
ULE: 20+ years
Retention Value: Medium
Defects: None

DBH (cm): 16
TPZ (m): 2
SRZ (m): 1.82

Comments:

Tree Number: 98

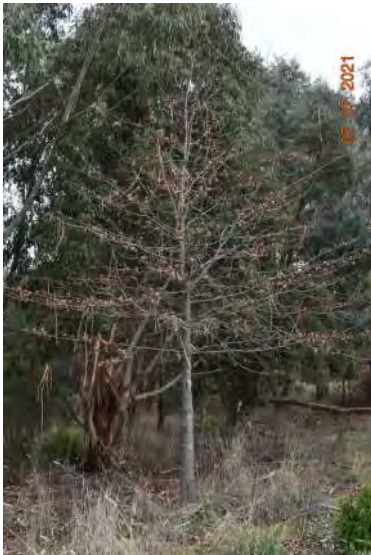


Botanical Name: *Eucalyptus camaldulensis*
Common Name: River Red Gum
Origin: Indigenous
Tree Age: Semi mature
H x W: 10m x 4m
Health: Good
Structure: Good
ULE: 20+ years
Retention Value: Medium
Defects: None

DBH (cm): 26
TPZ (m): 3.12
SRZ (m): 2.13

Comments:

Tree Number: 99



Botanical Name: *Quercus palustris*
Common Name: Pin Oak
Origin: Exotic
Tree Age: Semi mature
H x W: 6m x 3m
Health: Good
Structure: Good
ULE: 20+ years
Retention Value: Medium
Defects: None

DBH (cm): 13
TPZ (m): 2
SRZ (m): 1.68

Comments:

Tree Number: 100



Botanical Name: *Eucalyptus viminialis*
Common Name: Manna Gum
Origin: Indigenous
Tree Age: Semi mature
H x W: 12m x 6m
Health: Good
Structure: Good
ULE: 20+ years
Retention Value: Medium
Defects: None

DBH (cm): 46
TPZ (m): 5.52
SRZ (m): 2.67

Comments:

Tree Number: 101



Botanical Name: *Eucalyptus viminialis*
Common Name: Manna Gum
Origin: Indigenous
Tree Age: Semi mature
H x W: 10m x 5m
Health: Good
Structure: Good
ULE: 20+ years
Retention Value: Medium
Defects: None

DBH (cm): 26
TPZ (m): 3.12
SRZ (m): 2.15

Comments:

Tree Number: 102



Botanical Name: *Eucalyptus viminialis*
Common Name: Manna Gum
Origin: Indigenous
Tree Age: Semi mature
H x W: 10m x 5m
Health: Good
Structure: Fair
ULE: 20+ years
Retention Value: Medium
Defects: None

DBH (cm): 28
TPZ (m): 3.36
SRZ (m): 2.25

Comments:

Tree Number: 103



Botanical Name: *Eucalyptus ovata*
Common Name: Swamp Gum
Origin: Indigenous
Tree Age: Semi mature
H x W: 10m x 4m
Health: Good
Structure: Very poor
ULE: 1-5 years
Retention Value: Low

DBH (cm): 26
TPZ (m): 3.12
SRZ (m): 2.39

Defects: Codominant included stems with broken branches throughout the canopy

Comments: Evidence of previous branch failure

Tree Number: 104



Botanical Name: *Eucalyptus ovata*
Common Name: Swamp Gum
Origin: Indigenous
Tree Age: Semi mature
H x W: 12m x 4m
Health: Good
Structure: Fair
ULE: 20+ years
Retention Value: Medium

DBH (cm): 35
TPZ (m): 4.2
SRZ (m): 2.23

Defects: None

Comments:

Tree Number: 105



Botanical Name: *Eucalyptus ovata*
Common Name: Swamp Gum
Origin: Indigenous
Tree Age: Semi mature
H x W: 12m x 5m
Health: Good
Structure: Fair
ULE: 20+ years
Retention Value: Medium

DBH (cm): 44
TPZ (m): 5.28
SRZ (m): 2.28

Defects: Codominant stems

Comments:

Tree Number: 106



Botanical Name: *Eucalyptus viminalis*
Common Name: Manna Gum
Origin: Indigenous
Tree Age: Semi mature
H x W: 14m x 6m
Health: Good
Structure: Good
ULE: 20+ years
Retention Value: Medium
Defects: None

DBH (cm): 32
TPZ (m): 3.84
SRZ (m): 2.30

Comments:

Tree Number: 107



Botanical Name: *Eucalyptus viminalis*
Common Name: Manna Gum
Origin: Indigenous
Tree Age: Semi mature
H x W: 14m x 6m
Health: Good
Structure: Good
ULE: 20+ years
Retention Value: Medium
Defects: None

DBH (cm): 38
TPZ (m): 4.56
SRZ (m): 2.43

Comments:

Tree Number: 108

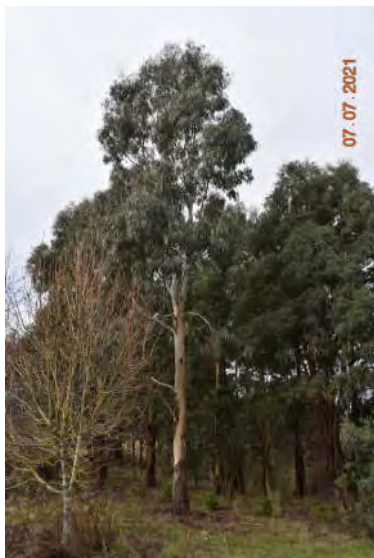


Botanical Name: *Eucalyptus viminalis*
Common Name: Manna Gum
Origin: Indigenous
Tree Age: Semi mature
H x W: 14m x 4m
Health: Good
Structure: Fair
ULE: 20+ years
Retention Value: Medium
Defects: None

DBH (cm): 27
TPZ (m): 3.24
SRZ (m): 2.15

Comments: Evidence of previous branch failure

Tree Number: 109

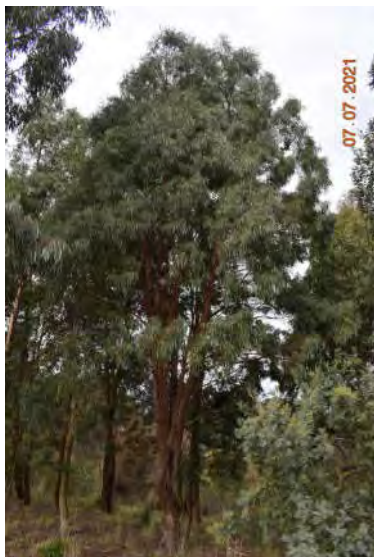


Botanical Name: *Eucalyptus viminalis*
Common Name: Manna Gum
Origin: Indigenous
Tree Age: Semi mature
H x W: 14m x 4m
Health: Good
Structure: Good
ULE: 20+ years
Retention Value: Medium
Defects: None

DBH (cm): 37
TPZ (m): 4.44
SRZ (m): 2.43

Comments:

Tree Number: 110



Botanical Name: *Eucalyptus nicholii*
Common Name: Narrow-leaved Black Peppermint
Origin: Native
Tree Age: Semi mature
H x W: 12m x 5m
Health: Good
Structure: Good
ULE: 20+ years
Retention Value: Medium
Defects: None

DBH (cm): 29
TPZ (m): 3.48
SRZ (m): 2.25

Comments:

Tree Number: 111



Botanical Name: *Acacia dealbata*
Common Name: Silver Wattle
Origin: Indigenous
Tree Age: Semi mature
H x W: 7m x 6m
Health: Good
Structure: Fair
ULE: 20+ years
Retention Value: Medium
Defects: None

DBH (cm): 21
TPZ (m): 2.52
SRZ (m): 1.88

Comments:

Tree Number: 112



Botanical Name: *Eucalyptus viminalis*
Common Name: Manna Gum
Origin: Indigenous
Tree Age: Semi mature
H x W: 10m x 4m
Health: Good
Structure: Fair
ULE: 20+ years
Retention Value: Medium
Defects: None

DBH (cm): 34
TPZ (m): 4.08
SRZ (m): 2.30

Comments:

Tree Number: 113



Botanical Name: *Eucalyptus viminalis*
Common Name: Manna Gum
Origin: Indigenous
Tree Age: Semi mature
H x W: 12m x 3m
Health: Good
Structure: Fair
ULE: 20+ years
Retention Value: Medium
Defects: None

DBH (cm): 25
TPZ (m): 3
SRZ (m): 2.10

Comments:

Tree Number: 114



Botanical Name: *Fraxinus excelsior 'Aurea'*
Common Name: Golden Ash
Origin: Exotic
Tree Age: Semi mature
H x W: 5m x 3m
Health: Good
Structure: Good
ULE: 20+ years
Retention Value: Low
Defects: None

DBH (cm): 11
TPZ (m): 2
SRZ (m): 1.53

Comments:

Tree Number: 115



Botanical Name: *Eucalyptus sideroxylon*
Common Name: Red Ironbark
Origin: Native
Tree Age: Semi mature
H x W: 10m x 4m
Health: Good
Structure: Fair
ULE: 20+ years
Retention Value: Medium
Defects: None

DBH (cm):	33
TPZ (m):	3.96
SRZ (m):	2.28

Comments:

Tree Number: 116



Botanical Name: *Eucalyptus camaldulensis*
Common Name: River Red Gum
Origin: Indigenous
Tree Age: Semi mature
H x W: 10m x 4m
Health: Good
Structure: Good
ULE: 20+ years
Retention Value: Medium
Defects: None

DBH (cm):	25
TPZ (m):	3
SRZ (m):	2.10

Comments:

Tree Number: 117



Botanical Name: *Eucalyptus ovata*
Common Name: Swamp Gum
Origin: Indigenous
Tree Age: Semi mature
H x W: 12m x 5m
Health: Good
Structure: Good
ULE: 20+ years
Retention Value: Medium
Defects: None

DBH (cm):	40
TPZ (m):	4.8
SRZ (m):	2.25

Comments:

Tree Number: 118



Botanical Name: *Eucalyptus ovata*
Common Name: Swamp Gum
Origin: Indigenous
Tree Age: Semi mature
H x W: 9m x 4m
Health: Fair
Structure: Fair
ULE: 10-20 years
Retention Value: Low
Defects: Decay in main stem

DBH (cm): 25
TPZ (m): 3
SRZ (m): 2.23

Comments:

Tree Number: 119



Botanical Name: *Eucalyptus ovata*
Common Name: Swamp Gum
Origin: Indigenous
Tree Age: Semi mature
H x W: 13m x 6m
Health: Good
Structure: Good
ULE: 20+ years
Retention Value: Medium
Defects: None

DBH (cm): 30
TPZ (m): 3.6
SRZ (m): 2.39

Comments:

Tree Number: 120



Botanical Name: *Eucalyptus ovata*
Common Name: Swamp Gum
Origin: Indigenous
Tree Age: Semi mature
H x W: 13m x 6m
Health: Good
Structure: Good
ULE: 20+ years
Retention Value: Medium
Defects: None

DBH (cm): 33
TPZ (m): 3.96
SRZ (m): 2.47

Comments:

Tree Number: 121



Botanical Name: *Eucalyptus viminalis*
Common Name: Manna Gum
Origin: Indigenous
Tree Age: Semi mature
H x W: 11m x 4m
Health: Good
Structure: Good
ULE: 20+ years
Retention Value: Medium
Defects: None

DBH (cm):	26
TPZ (m):	3.12
SRZ (m):	2.10

Comments:

Tree Number: 122



Botanical Name: *Hesperocyparis arizonica 'Glauca'*
Common Name: Arizona Cypress
Origin: Exotic
Tree Age: Young
H x W: 2m x 1m
Health: Good
Structure: Good
ULE: 20+ years
Retention Value: Low
Defects: None

DBH (cm):	6
TPZ (m):	2
SRZ (m):	1.50

Comments: Group of approximately 6 individuals

Tree Number: 123



Botanical Name: *Quercus canariensis*
Common Name: Algerian Oak
Origin: Exotic
Tree Age: Young
H x W: 6m x 4m
Health: Good
Structure: Good
ULE: 20+ years
Retention Value: Third party
Defects: None

DBH (cm):	15
TPZ (m):	2
SRZ (m):	1.72

Comments:

Tree Number: 124



Botanical Name: *Quercus canariensis*
Common Name: Algerian Oak
Origin: Exotic
Tree Age: Young
H x W: 6m x 4m
Health: Good
Structure: Good
ULE: 20+ years
Retention Value: Third party
Defects: None

DBH (cm): 9
TPZ (m): 2
SRZ (m): 1.50

Comments:

Tree Number: 125



Botanical Name: *Quercus canariensis*
Common Name: Algerian Oak
Origin: Exotic
Tree Age: Young
H x W: 6m x 4m
Health: Good
Structure: Good
ULE: 20+ years
Retention Value: Third party
Defects: None

DBH (cm): 11
TPZ (m): 2
SRZ (m): 1.53

Comments: