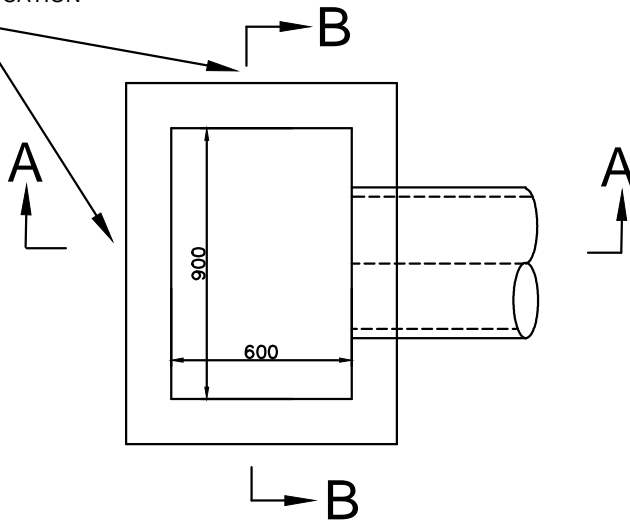
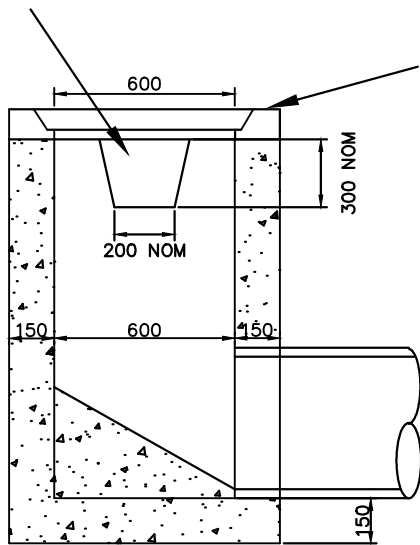


V-NOTCH OPENING LOCATION
TO SUIT GROUND
CONDITIONS



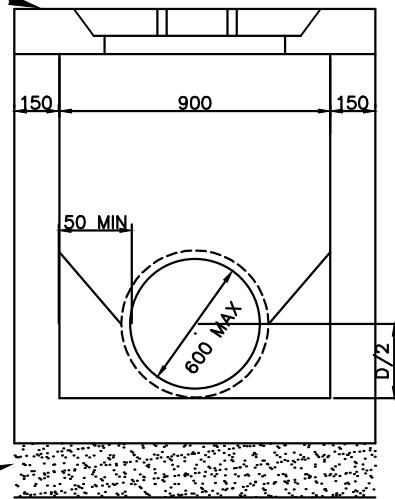
PLAN

V-NOTCH OPENING



SECTION A-A

PRECAST COVER
WITH CIRCULAR
CONCRETE INSERT



SECTION B-B

50mm COMPACTED
CLASS 3 F.C.R BEDDING

NOTES:

1. ALL WALLS TO BE MINIMUM 150mm THICK
2. THE TOP OF THE PIT SHALL MATCH THE FINISHED SURFACE LEVEL
3. CLASS B CIRCULAR CONCRETE INSERT AND PRECAST LID SHALL BE USED IN EASEMENTS AND RESERVES
4. CLASS D SHALL BE USED WHEN PIT IS LOCATED IN ROAD RESERVE WITHIN 1m OF VEHICLE CARRIAGEWAY ALSO SEE VICROADS SD 1051
5. PROVIDE STEP IRONS FOR PIT DEPTH EXCEEDING 1.0m
6. CONCRETE STRENGTH 25MPa AT 28 DAYS
7. PIT TO BE HAUNCHED



V-NOTCH PIT
(Not To Scale)

DRAWN BY:
C.B.

CHECKED : L.T

DATE:
05.04.13

SD 016

REVISION	DATE	APPROVED
1.	27.9.2010	J.G.
2.	5.04.2013	L.T.
3.		