

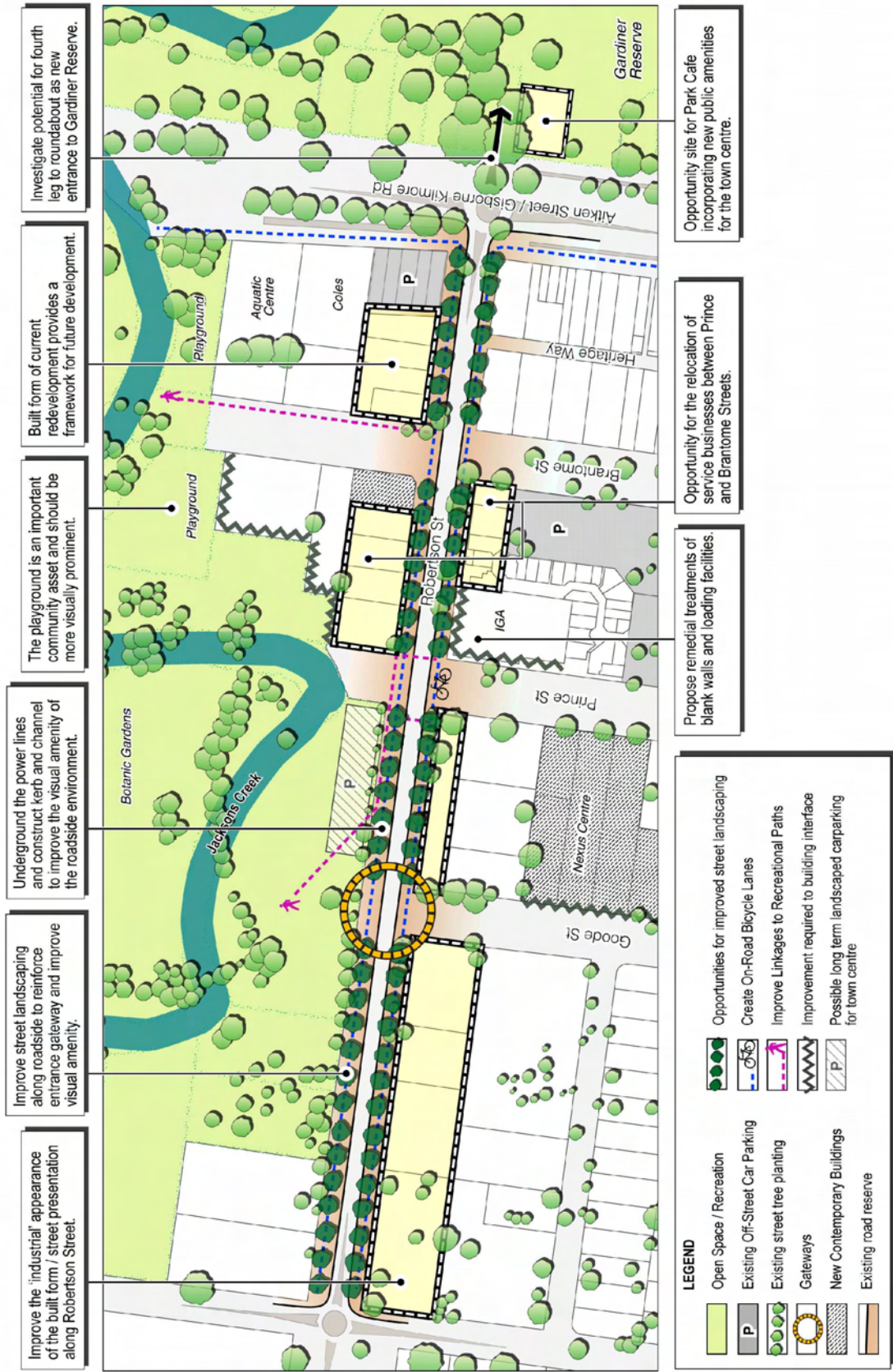
Robertson Street Gateway

The Robertson Street Gateway to the Town Centre is currently in need of improvement. The sense of arrival at this entrance to the township could be significantly enhanced through the improvement of landscaping within the spaces surrounding it, as well as improved articulation of the built form along Robertson Street.

The Concept Plan on the following page includes suggestions of how this streetscape could be improved as an entry point to the Town Centre.



Concept Plan Robertson Street (Bacchus Marsh Entrance)



LEGEND

	Open Space / Recreation		Opportunities for improved street landscaping
	Existing Off-Street Car Parking		Create On-Road Bicycle Lanes
	Existing street tree planting		Improve Linkages to Recreational Paths
	Gateways		Improvement required to building interface
	New Contemporary Buildings		Possible long term landscaped carparking for town centre
	Existing road reserve		