

# Romsey Five Mile Creek Master Plan



# Contents

Introduction.....	1
Objectives .....	1
Background.....	2
Community Engagement .....	2
Implementation Plan .....	3

## Appendices

1. Romsey Five Mile Creek Master Plan
2. Environmental Works Plan
3. Summary of Community Consultation

# Introduction

The Romsey Five Mile Creek Master Plan aims to highlight the unique social, cultural, historical, recreational and environmental qualities of Five Mile Creek and provide opportunities to increase the use, enjoyment and understanding of this place by a range of users while enhancing the environment values.

The plan establishes a vision for the reserve as well as a series of initiatives to achieve this vision including pathway extensions, environmental improvements, signage and passive recreation infrastructure.

The complete Master Plan drawings are provided in Appendix 1. The revegetation and weed control activities to be undertaken are outlined in Appendix 2 - Environmental Works Plan (EWP). Finally, the feedback received on the draft Master Plan is summarised in the Appendix 3 - Summary of Community Consultation.

## Objectives

Implementation of the Master Plan will achieve the following objectives.

1. Enhance the biodiverse, natural corridor along Five Mile Creek with vegetation and path connections into the surrounding township.
2. Improve connections to and access along the Creek corridor to provide residents and visitors of all ages and abilities with a natural creek-walk experience including opportunities for physical activity, community gatherings, seating and picnic areas, play areas, bird and wildlife watching.
3. Meet the needs of the local community for informal, passive recreation allowing a connection with nature, relaxation and social interaction.
4. Improve the health and well-being of residents and visitors by better connecting the Creek with neighbourhoods and the town centre, providing improved access to open space, and allowing the natural values of the Creek to "spill-out" into the town.
5. Improve biodiversity and habitat values by controlling weeds, promoting indigenous plantings that support locally indigenous flora and fauna and that contributes to a habitat link to Deep Creek and the broader region.
6. Increase tree planting for shade, cooling and aesthetics.
7. Develop a better understanding of the hydrology of the creek including stormwater inflows, sediment loads, water quality and flooding with the aim of improving the health of the waterway.
8. Facilitate education through connection with nature and history by providing interpretative information on Aboriginal cultural heritage, European history and environmental values of the Creek.
9. Encourage partnerships and collaboration between government organisations, traditional owners and the local community. Encourage creativity and community support through both on ground activities, outdoor artwork, events and improved communication.

# Background

Romsey is located within the Macedon Ranges Shire, approximately 63km north-west of Melbourne. The township forms the major urban centre in the east of the municipality and is located on the Lancefield-Melbourne Road. Prior to European settlement the area was occupied by the Wurundjeri people.

Five Mile Creek is an important tributary to Deep Creek. Deep Creek rises near Newham in the Macedon Ranges and flows through the rural townships of Lancefield, Romsey and Darraweit Guim before joining Jacksons Creek at Bulla to become the Maribyrnong River. Commencing near Romsey, Five Mile Creek forms an important part of the Deep Creek catchment

Five Mile Creek and Deep Creek are identified in Melbourne Water's Healthy Waterways Strategy 2018-2028 as a priority area for the establishment of vegetation buffers along waterways. It is also identified as a priority biolink in the Macedon Range Biodiversity Strategy.

Within the township of Romsey, the public land component along Five Mile Creek includes about 1.3 km of creek frontage and covers an area close to seven hectares of land. The creek reserve is Council owned and managed.

The creek corridor would have once supported many native grasses and shrubs as well as large Eucalyptus trees such as Manna Gums and Swamp Gums. A range of wildlife would have relied on the waterway such as Brown Toadlet and Growling Grass Frog and the surrounding vegetation would have provided habitat for marsupials such as Sugar Gliders, Phascogale and an abundance of woodland birds.

The value that the local community put on the creek reserve for its environmental, recreational, cultural, historical and social values were highlighted throughout community consultation and in the recent Issues and Opportunities paper undertaken for the Romsey Town Structure Plan.

# Community Engagement

The development of the Romsey Five Mile Creek Master Plan took place in 2019 following keen interest from community organisations. The project was led by the community through the Romsey Five Mile Creek Working Group and has involved the Romsey Region Business and Tourism Association, the Lancefield and Romsey Lions Club and Landcare.

A stakeholder group consisting of representatives from Macedon Ranges Shire Council (including recreation, strategic planning, operations, environment, and assets), Melbourne Water, and members of the local community oversaw the development of the plan.

PLOT Landscape Architects were selected to assist in the process and a number of consultation activities took place to ensure the Romsey community contributed to the plan.

The draft masterplan was released for community consultation for four weeks in May 2019. It was promoted through a direct mail-out to surrounding residents, signage and information on site and in the community hub, use of local print and social media, and public drop-in sessions.

In total 76 feedback forms, six written submissions and six comments on social media were received. In general, the majority of feedback was received from regular users of the creek who were supportive of the actions proposed.

# Implementation Plan

The Romsey Five Mile Creek Master Plan has been developed to provide guidance for the enhancement of the Five Mile Creek Reserve over the next decade and will require a range of funding sources to support full implementation.

The implementation of this plan is completely dependent on the provision of funding to undertake the works. Melbourne Water, Council and the community can use the Master Plan to apply for different funding streams available through Council, State and Federal Governments, Melbourne Water Stream Frontage Grants, community environment grants, or other funding programs.

Community groups will also be encouraged to take ownership in progressing the plan such as hosting community planting days to implement the revegetation phases of the Master Plan.

The following table provides an indicative timeline for Master Plan implementation and is subject to change as funding and other opportunities arise. In particular, the drainage engineering works including sediment basins, water quality treatment, and wetlands can occur whenever is possible and feasible.

Year	Action	Location	Responsible Dept / Organisation
2019-20	Master Plan adopted by Council		Environment Working Group
	Install exercise equipment	Where indicated on Master Plan	Recreation
2020-21	Investigate naturalisation of creek	Main St West and Lions Park, EWP Project Area 10, 11	Melbourne Water
	Infrastructure – signage, fence, trees	Main St West and Lions Park	Parks and gardens
	Infrastructure – Pathways, Bridges and Drainage	<ul style="list-style-type: none"> <li>Wrixon Street Entry, Creek Crossing and Path Loop</li> <li>Pohlman Street to Robb Drive Pathway</li> <li>Muir and Sullivan Courts Reserve Access</li> <li>West End – Couzens Lane to Creek Crossing</li> <li>Main Street East</li> </ul>	Engineering and Projects
	Environmental Works	<ul style="list-style-type: none"> <li>Develop proposal with Melbourne Water for on-ground works.</li> <li>Support Five Mile Creek Working Group to apply for community grants with Melbourne Water</li> </ul>	Environment, MRSC / Melbourne Water
2021-22	Implement naturalisation of creek actions based on outcomes of investigation	Main St West and Lions Park, EWP Project Area 10, 11	Melbourne Water

Year	Action	Location	Responsible Dept / Organisation
	Infrastructure – Fencing, Signage, Bins, Seating, Trees	<ul style="list-style-type: none"> <li>Wrixon Street Entry, Creek Crossing and Path Loop</li> <li>Pohlmann Street to Robb Drive Pathway</li> <li>Muir and Sullivan Courts Reserve Access</li> <li>West End – Couzens Lane to Creek Crossing</li> <li>Main Street East</li> </ul>	Parks and Gardens
	Environmental Works – weed removal, revegetation	<ul style="list-style-type: none"> <li>EWP Project Area 1, 4, 11</li> <li>EWP Project Area 7 (stage 1), 8 (stage 1), 10 (stage 1)</li> </ul>	Environment, MRSC / Melbourne Water
2022-23	Infrastructure – Path, Sign, Seat, Trees	<ul style="list-style-type: none"> <li>Main Street to William Street</li> <li>Drovers Retreat Picnic Area</li> </ul>	Parks and Gardens
	Environment Works – weed removal, revegetation	<ul style="list-style-type: none"> <li>EWP Project Area 7 (stage 2), 8 (stage 2), 10 (stage 2)</li> <li>EMP Project Area 9</li> <li>Follow-up – 1, 4, 10, 11</li> </ul>	Melbourne Water Environment
2023-24	Infrastructure – Path, Sign, Seat, Trees	<ul style="list-style-type: none"> <li>Detention Basin South</li> <li>Detention Basin North</li> </ul>	Parks and Gardens
	Infrastructure - lighting	<ul style="list-style-type: none"> <li>Entries at: Wixon Street, Robb Street, Pohlmann Street, William Street, and Drovers Street</li> </ul>	Parks and Gardens
	Environment Works – weed removal, revegetation	<ul style="list-style-type: none"> <li>EWP Project Area 2, 3, 6</li> <li>Follow-up Area 1, 4, 7, 8, 9, 10, 11</li> </ul>	Melbourne Water Environment
2024-25	Infrastructure – Path, Sign, Seat	<ul style="list-style-type: none"> <li>Robb Drive Access</li> <li>Swimming Hole</li> </ul>	Parks and Gardens
	Environment Works – weeds removal, revegetation	<ul style="list-style-type: none"> <li>EWP Project Area 12, 13, 14, 15</li> <li>Follow-up Areas – 1, 2, 3, 4, 6, 7, 8, 9, 10, 11</li> </ul>	Melbourne Water Environment
2025-26	Environment Works – weeds removal, revegetation	<ul style="list-style-type: none"> <li>EWP Project Area 5, 16, 17</li> <li>Follow-up Areas – 1, 2, 3, 4, 6, 7, 8, 9, 10, 11, 12, 13, 14, 15</li> </ul>	Melbourne Water Environment

**CONTENTS**

- PLA257-L01 Overall Landscape Masterplan**
- PLA257-L02 Landscape Masterplan - West**
- PLA257-L03 Landscape Masterplan - East**
- PLA257-L04 Main Street Enlargement**

Improvements to Couzens Road entry including path connections, fencing and signage. Extend street tree planting along Couzens Road leading to Creek walk. Investigate opportunities to connect to local, rural walking trails. Ensure adequate maintenance vehicle access.

Extension to path network including path along north side of Creek to provide loop.

Proposed gathering space with all ability access, possibly with small play area, picnic settings, seating, shade and exercise equipment. Investigate access to creek for "nature play" opportunities.

Improvements to Drovers Retreat / Robb Drive entry including path connections, frontage fencing and signage. Ensure adequate maintenance vehicle access.

Extend path network including along south side of Creek to create loop and around detention basin.

Improvements to Wrixon Street entry including path connections, bridge crossing, frontage fencing and signage. Extend street tree planting along streets leading to Creek walk.

Improvements to Robb Drive entry including planting, fencing, bin/s, footpath connections, signage and possible road treatment.

Improvements to Main Street path crossings and connection to community facilities.

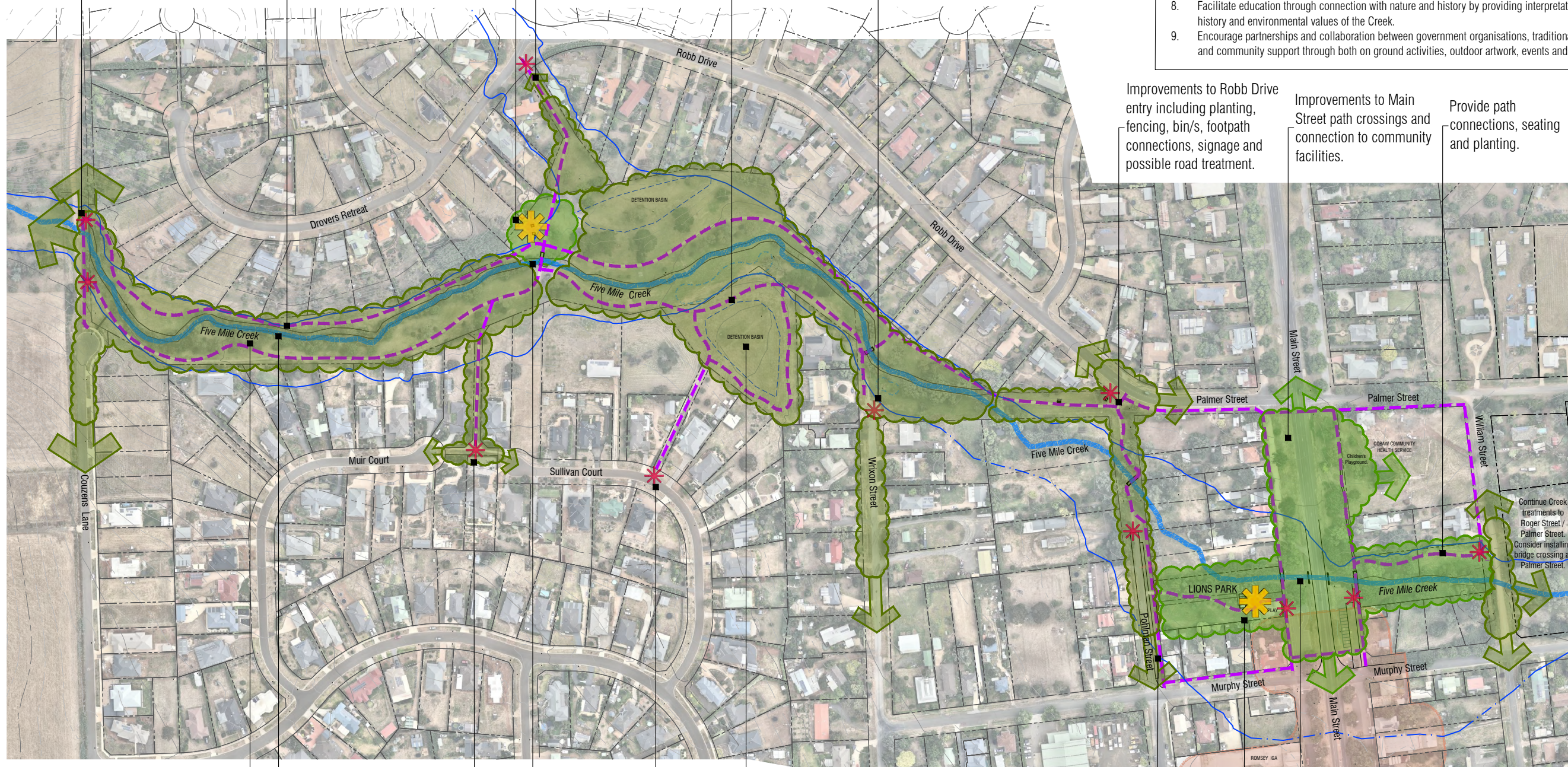
Provide path connections, seating and planting.

**MASTERPLAN VISION**

The Five Mile Creek Nature Reserve Masterplan aims to highlight the unique social, cultural, historical, recreational and environmental qualities of Five Mile Creek Nature Reserve and provide opportunities to increase the use, enjoyment and understanding of this place by a range of users while enhancing the environmental values.

Implementation of the Masterplan will achieve the following objectives.

1. Enhance the biodiverse, natural corridor along Five Mile Creek with vegetation and path connections into the surrounding township.
2. Improve connections to and access along the Creek corridor to provide residents and visitors of all ages and abilities with a natural creek-walk experience including opportunities for physical activity, community gatherings, seating and picnic areas, play areas, bird and wildlife watching.
3. Meet the needs of the local community for informal, passive recreation allowing a connection with nature, relaxation and social interaction.
4. Improve the health and well-being of residents and visitors by better connecting the Creek with neighbourhoods and the town centre, providing improved access to open space, and allowing the natural values of the Creek to "spill-out" into the town.
5. Improve biodiversity and habitat values by controlling weeds, promoting indigenous plantings that support locally indigenous flora and fauna and that contributes to a habitat link to Deep Creek and the broader region.
6. Increase tree planting for shade, cooling and aesthetics.
7. Develop a better understanding of the hydrology of the Creek including stormwater inflows, sediment loads, water quality and flooding with the aim of improving the health of the waterway.
8. Facilitate education through connection with nature and history by providing interpretative information on Aboriginal cultural heritage, European history and environmental values of the Creek.
9. Encourage partnerships and collaboration between government organisations, traditional owners and the local community. Encourage creativity and community support through both on ground activities, outdoor artwork, events and improved communication.



**LEGEND**

- Five Mile Creek - Watercourse
- \* Entry to Creek Corridor
- Pedestrian Path Network (2.5m wide shared path where possible)
- ★ Community Gathering Space
- Activity Areas - high use community areas with a mix of indigenous and native species and existing exotic avenue species. Landscape maintenance reflects standards for a neighbourhood park.
- Natural Creek Corridor - predominantly indigenous tree and other mid and lower storey plant species to improve biodiversity and habitat values. Landscape maintenance reflects 'bushland' setting with a diverse range of weed control, revegetation and restoration activities. Mowing concentrated along pathways and other high use areas.
- Romsey Town Centre
- 1 in 100 Year Flood Level

1. This drawing is a Masterplan and is conceptual only and not for construction.  
 2. This plan is based on aerial photography and GIS data. The location of all paths, water courses, reserve and drainage infrastructure, trees and other site features is therefore indicative.  
 3. The location and depth of services shall be verified on site prior to the commencement of any works.  
 4. All permits and approvals from relevant Authorities shall be sought and secured prior to any works on site.  
 5. References: Romsey Issues and Opportunities Paper November 2018 (Draft) by Macedon Ranges Shire Council; Romsey Five Mile Creek - West Walk brochure (Version 3, 26 July 2018); The Ecology of Five Mile Creek in Romsey (Draft) by Tree Wishes Land Care Advice; Minutes and notes from Five Mile Creek Masterplan Workshops of 28 November 2018 and subsequent feedback from MRSC officers and local community surveys by Romsey Five Mile Creek Group.

Install and maintain nest boxes along the Creek for habitat. Provide information about remnant trees and vegetation.

Improvements to maintenance along Creek corridor including weed control and regular mowing along paths.

Confirm structural integrity of bridges and culverts and schedule repairs and refurbishments as required.

Develop footpath connections to Sullivan and Muir Courts with tree planting for shade to better connect neighbourhoods with the Creek corridor.

Improve stormwater delivery to Creek including volume, intensity and quality to reduce impacts on Creek planting, flora and fauna. Explore opportunities to retro-fit sediment capture and other water quality treatments prior to entering the Creek to protect and improve the health of the waterway.

Improve visibility and appeal of Creek from Main Street including possible naturalising of creek, signage, fencing and planting.

Improve Lions Park as community gathering space including possible extension to play area, naturalising the creek, signage and planting.

Enhance connection to residential areas and town centre by improving footpath access, signage and planting shade trees.



Client / Project  
 Romsey Five Mile Creek Group  
 Five Mile Creek Nature Reserve, Romsey  
 Couzens Lane to William Street

**Overall Landscape Masterplan**

Drawn	Approved	Date	North
AD	RH	15.11.2019	
Scale (A1)	Scale (A3)	Sheet	
1:2000	1:4000	1 of 4	

This drawing and design is protected by copyright © PLOT Landscape Architects Pty Ltd.

Drawing Number: **PLA257-L01**      Revision: **B**

Install bollards or feature fence to prevent unauthorised vehicle access to north side of creek. Ensure maintenance vehicle access is provided.

Construct 2.5m wide (where possible) gravel path on north side of Creek to create loop walk (maintain mowed grass access in short term). Plant trees to provide shade and habitat. Remove old and redundant fence along Creek edge. Ensure reserve is appropriately fenced along boundary.

Develop proposed activity node outside 1 in 100 year flood level including picnic settings and seats, all-ability access paths, possible nature-inspired play space, possible access to Creek, outdoor exercise equipment, interpretative signage and tree planting.

Fully mulch and plant between property boundaries and Creek to reduce mowing maintenance. Plants to allow clear sightlines.

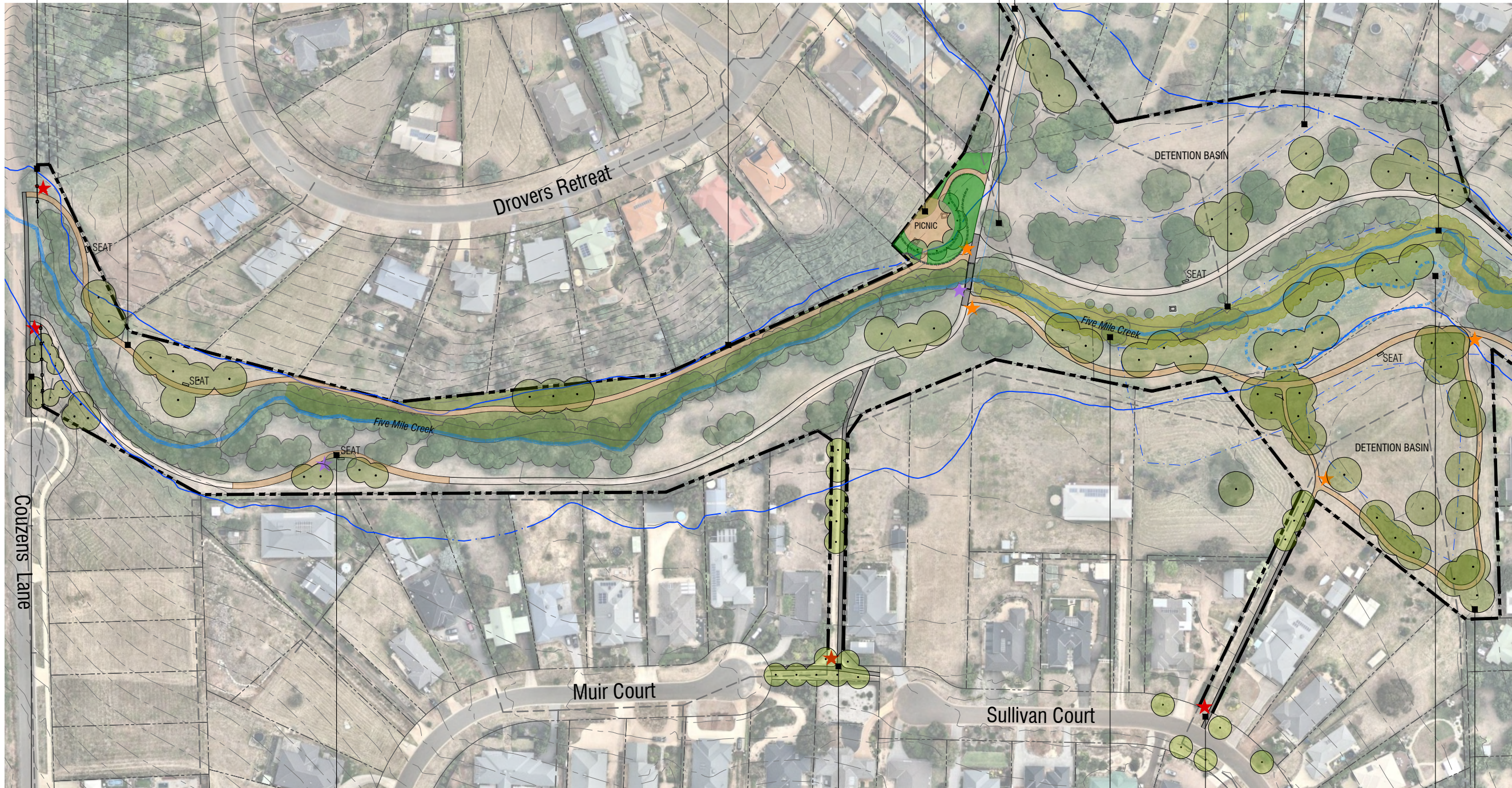
Assess mature trees for health and structural integrity and carry-out arboricultural maintenance as required.

Improve Drivers Retreat / Robb Drive entry including entry signage with wayfinding and feature timber fence, and possible solar lighting. Ensure adequate maintenance vehicle access. Explore street tree planting on adjacent streets in accordance with Macedon Ranges SC Street Tree Policy.

Investigate installation of wetlands, sediment ponds and other water-sensitive-urban-design infrastructure to improve the quality of stormwater inflows to the Creek.

Plant indigenous trees to increase shade and habitat values.

Transition Creek bed and bank planting to indigenous species by removing weeds (including trees such as willows) over time and revegetate immediately. Maintain plantings to ensure weeds do not re-infest the Creek.



**LEGEND**

- Indigenous / Native Tree Planting
- Riparian Plantings
- Indigenous Plantings
- Feature Plantings (Native / Indigenous)
- Existing Path
- Proposed Gravel Path / Area (new).  
*Setout to be confirmed on site by MRSC.*
- Proposed Concrete Path (new). *Setout to be confirmed on site by MRSC.*
- Entry Sign (standard MRSC Reserve ID Sign)
- Directional (Wayfinding) Sign (standard MRSC Trail Marker)
- Interpretative Sign (standard MRSC Interpretive Sign Large)
- 1 in 100 Year Flood Level

Improve Couzens Lane entry including wayfinding signage, bollards or feature fence, concrete path connection to court-bowl, removal of steps and grading of path and tree planting.

Deviat path to reduce straight section and install interpretative signage relating to flora and fauna.

Improve Muir Court entry including signage, path, tree planting for shade (not adjacent to dwellings) footpath connections and street tree planting.

Diverse riparian planting along creek to be minimum 10m wide or as otherwise recommended.

Improve Sullivan Court entry including signage, path, footpath connections and street tree planting. Construct a gravel path around the detention basin with directional signage and tree planting for habitat and shade. Ensure drainage system includes water quality treatment and is functioning in accordance with best-practice.

Possible site for wetland (stormwater quality treatment).

Tree planting in mulched beds with under-storey planting to provide shade and habitat. No tree planting on embankment.

**Macedon Ranges Shire Council**

Client / Project: Romsey Five Mile Creek Group  
Five Mile Creek Nature Reserve Romsey Couzens Lane to William Street

**Landscape Masterplan - West**

Drawn	Approved	Date	North
AD	RH	15.11.2019	
Scale (A1)	Scale (A3)	Sheet	
nts	nts	2 of 4	

This drawing and design is protected by copyright © PLOT Landscape Architects Pty Ltd.

Drawing Number: **PLA257-L02**      Revision: **B**

Continued on L03



Construct gravel path on south side of Creek to create loop, include tree planting for shade and habitat.

Improve Wrixon Street entry including signage, feature timber fence (such as post-and-rail), possible solar lighting and street tree planting in accordance with Macedon Ranges SC Street Tree Policy.

Improve Creek crossing.

Possible site for sediment basin (stormwater quality treatment).

Remove weed species in staged process and replant with indigenous trees and riparian plants. Investigate rehabilitation of former swimming hole by removing sediment and re-instatement of larger pool area to increase habitat diversity and provide access to water along the creek corridor. Provide seating and interpretative signage and possible access to Creek for 'nature play' opportunities.

Tree planting along path away from creek edge for shade and for visual and botanical diversity. Provide seating in shaded areas overlooking creek.

Improve Robb Drive entry including street tree planting on Palmer Street / Robb Drive, feature planting, entry and wayfinding signage, bin/s and possible solar lighting. Improve connectivity and access by providing a path between Main Street and Pohlman Street. Explore installing a concrete refuge on Palmer Street to allow pedestrian access to footpath network (north side of Palmer Street) and construct a footpath on the south side to Main Street.

Improve connectivity and accessibility by providing footpaths along Pohlman Street and Murphy Street connecting to and across Main Street. Construct feature 'frontage' fence to define pedestrian only spaces at the end of Pohlman and Wrixon Streets. Define informal parallel carparking along Pohlman St. Extend natural qualities of the creek environment into the town with street tree planting along Pohlman Street and Robb Drive in accordance with the Macedon Ranges SC Street Tree Policy. Install entry and wayfinding signage at Lions Park and at the end of Pohlman St.

Improve Lions Park by investigating the removal of the existing carparking within the Park, expanding playspace, possible solar lighting, install a feature fence along the frontage within a planted bed and signage with wayfinding - area subject to a future plan. Plant trees for shade and landscape Creek with rocks and riparian planting.

Explore opportunities to transfer private creek sections to public ownership, if and when opportunity arises (such as part of future subdivisions or developments).

Improve connectivity and access along William Street and to Cobaw Health with footpaths. Install entry and wayfinding signage and possible solar lighting. Extend natural qualities of the Creek into the town with street tree planting in accordance with Macedon Ranges SC Street Tree Policy.

**LEGEND**

- Indigenous / Native Tree Planting
- Riparian Plantings
- Indigenous Plantings
- Feature Plantings (Native / Indigenous)
- Mowed Grassed Area
- Existing Path
- Proposed Gravel Path / Area (new). *Setout to be confirmed on site by MRSC.*
- Proposed Concrete Path (new). *Setout to be confirmed on site by MRSC.*
- Entry Sign (standard MRSC Reserve ID Sign)
- Directional (Wayfinding) Sign (standard MRSC Trail Marker)
- Interpretative Sign (standard MRSC Interpretive Sign Large)
- Rubbish / Recycling Bin/s
- 1 in 100 Year Flood Level



Continued on L02

Refer to ENLARGEMENT on L04.



Client / Project: Romsey Five Mile Creek Group  
 Five Mile Creek Nature Reserve Romsey  
 Couzens Lane to William Street

Drawing Title			
<b>Landscape Masterplan - East</b>			
Drawn	Approved	Date	North
AD	RH	15.11.2019	
Scale (A1)	Scale (A3)	Sheet	
nts	nts	3 of 4	
This drawing and design is protected by copyright © PLOT Landscape Architects Pty Ltd.			
Drawing Number	Revision		
<b>PLA257-L03</b>	<b>B</b>		

Investigate removal of carparking from park to increase park area / playspace and installation of feature fence along frontage (such as timber post and rail or to match fence at Cobaw health playground) - area subject to a future plan. Install entry sign with map and wayfinding. Service road and park frontage could be used for community events such as markets.

Refurbish existing public toilets and possible interpretative signage relating to Ash Wednesday.

Remove tree suckers. Landscape creek bed and banks with large rocks and diverse, low growing indigenous riparian species. Install 'spade' edge between mowed grass and planting to improve maintainability.

Remove mowed grass and possible removal of concrete channel and 'naturalise' creek with large rocks and diverse, low growing indigenous riparian species. Plantings will provide threshold and make Creek corridor obvious.

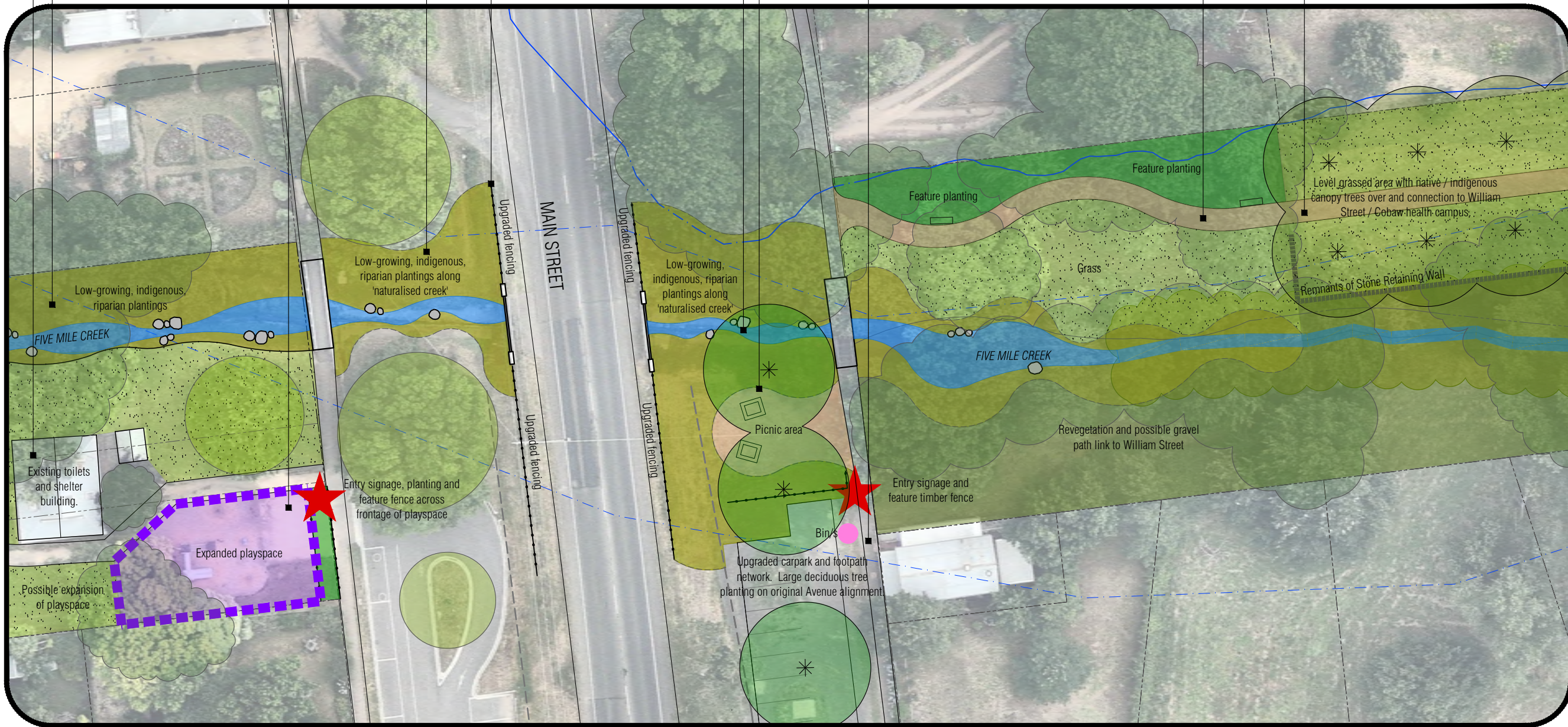
Work with road authorities to replace existing treated timber 'hurdles' with more visually appealing fencing. Maintain concrete channel under bridge.

Develop picnic area including interpretative signage, fencing, picnic settings, rubbish / recycling bin/s and other furniture. Plant large-growing deciduous trees on existing alignment of large, avenue trees and in recognition of the heritage setting.

Formalise carparking, install entry and wayfinding sign and construct compliant footpath crossing of Main Street and footpath along Murphy Street and William Street.

Construct a gravel path, mulch and plant between path and title boundary, grass between path and Creek to allow access to Creek bed. Plant with indigenous species south side of Creek. Investigate gravel path as a loop.

Retain existing retaining wall and restore as necessary, level and grass area, plant shade trees and construct pathway centrally.



**LEGEND**

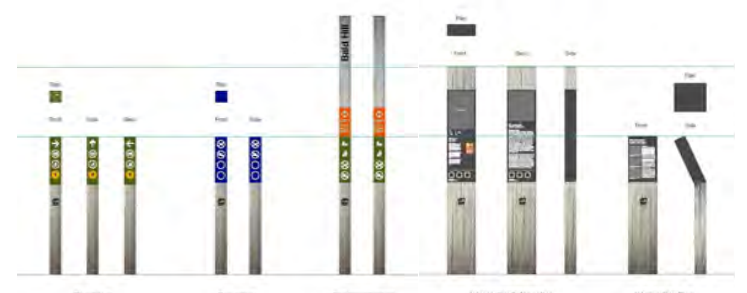
- Indigenous / Native Tree Planting
- Feature Deciduous Tree Planting
- Riparian Plantings
- Indigenous Plantings
- Feature Plantings (Native / Indigenous)
- Mowed Grassed Area
- Existing Path
- Proposed Gravel Path / Area (new).  
*Setout to be confirmed on site by MRSC.*
- Entry Sign (standard MRSC Reserve Sign)
- Directional (Wayfinding) Sign (standard MRSC Trail Marker)
- Interpretative Sign (standard MRSC Interpretative Sign Large)
- Rubbish / Recycling Bin/s
- 1 in 100 Year Flood Level



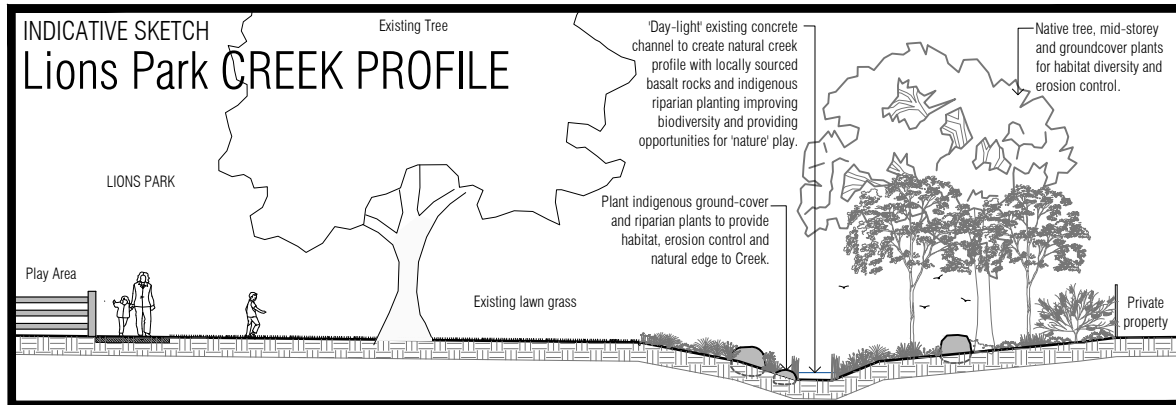
Rustic Timber Seat  
*(install range of seats - with and without arm rests)*



Feature Timber Fence



MRSC Standard Signage



Client / Project  
Romsey Five Mile Creek Group  
Five Mile Creek Nature Reserve Romsey  
Couzens Lane to William Street

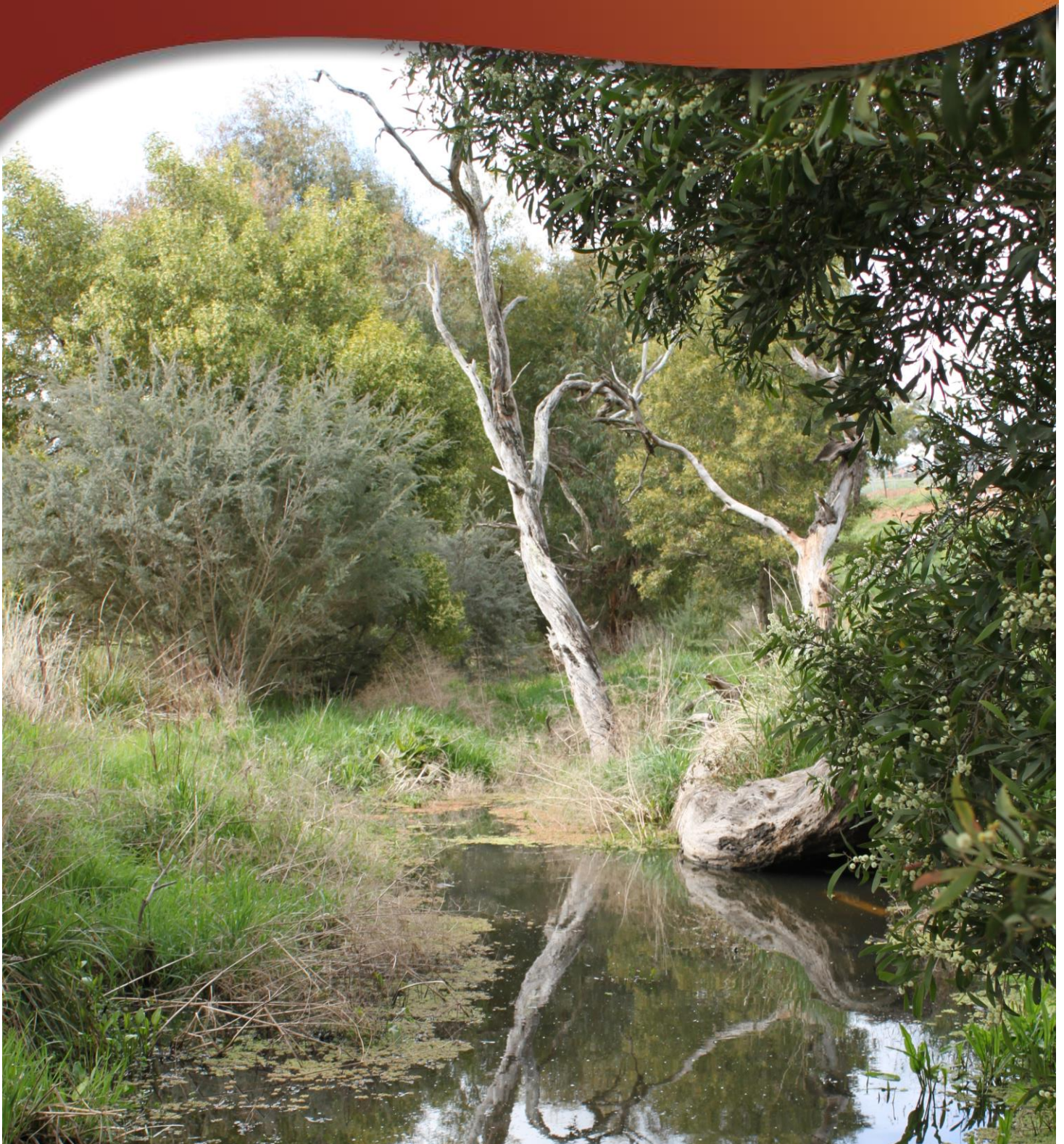
**Main Street Enlargement**

Drawn	Approved	Date	North
AD	RH	15.11.2019	
Scale (A1)	Scale (A3)	Sheet	
1:400	1:800	4 of 4	

This drawing and design is protected by copyright © PLOT Landscape Architects Pty Ltd.

Drawing Number: **PLA257-L04**      Revision: **B**

# Romsey Five Mile Creek Environmental Works Plan



# Contents

<b>Romsey Five Mile Creek Map.....</b>	<b>1</b>
<b>Environmental Works Program .....</b>	<b>2</b>
<b>General requirements .....</b>	<b>7</b>
<b>Revegetation species list .....</b>	<b>8</b>

# Project Area Map



# Environmental Works Program

Section	Description / condition	Works	Other	Priority
1	<ul style="list-style-type: none"> <li>Western entrance from Couzens Lane</li> <li>Large Manna Gums</li> <li>In-stream weeds</li> <li>No native understory</li> <li>Redundant farm fencing on north side of reserve</li> <li>Exposed back yards to the north</li> </ul>	<ol style="list-style-type: none"> <li>Prepare site by spraying grassy weeds and then mulch or jute matt planting areas.</li> <li>Plant native understory species @ 6 / m2, up to 4m from the creek edge and scattered trees and shrubs on north side of creek, particularly to provide screening / privacy for properties facing Drovers Retreat. Robust in-stream species (e.g. Carex sp.) could be planted in the channel in an attempt to outcompete non-natives.</li> <li>Annual spray / brush-cut grassy weeds and maintain plantings.</li> </ol>	<ul style="list-style-type: none"> <li>Remove internal fencing on north side</li> <li>Retain in-stream introduced species unless sufficient funds available for in-stream revegetation</li> <li>Depending on water level when planting, the use of jute mat is recommended to support establishment and a competitive advantage for natives</li> </ul>	High
2	<ul style="list-style-type: none"> <li>Large Manna Gums</li> <li>In-stream weeds</li> <li>No native understory</li> <li>Redundant farm fencing on north side of reserve</li> <li>Exposed back yards to the north</li> </ul>	<ol style="list-style-type: none"> <li>Prepare site by brush-cutting introduced grasses, spraying planting areas and installing pinned weed mat squares or jute matt.</li> <li>Plant native understory species @ 6 / m2, up to 4m from the creek edge and scattered trees and shrubs on both sides of the creek, including plantings to provide screening / privacy for properties facing Drovers Retreat.</li> <li>Annual spray / brush-cut grassy weeds and maintain plantings.</li> </ol>	<ul style="list-style-type: none"> <li>Remove internal fencing on north side</li> <li>Retain in-stream introduced species unless sufficient funds available for in-stream revegetation</li> </ul>	Medium
3	<ul style="list-style-type: none"> <li>In-stream Crack Willow (x1)</li> <li>No native understory</li> </ul>	<ol style="list-style-type: none"> <li>Cut and paint Willow. Once Willow has died, remove debris.</li> <li>Prepare site by brush-cutting and spraying introduced understory species and installing pinned weed mat squares or jute matt.</li> </ol>		Medium

Section	Description / condition	Works	Other	Priority
		<ol style="list-style-type: none"> <li>3. Plant native understorey species @ 6 / m2, up to 4m from the creek edge and scattered trees and shrubs on both sides of the creek</li> <li>4. Annual spray / brush-cut grassy weeds and maintain plantings.</li> </ol>		
4	<ul style="list-style-type: none"> <li>• Concrete creek crossing</li> <li>• Large remnant Eucalyptus</li> <li>• No native understorey</li> </ul>	<ol style="list-style-type: none"> <li>1. Prepare site by spraying grassy weeds and then mulch or jute matt</li> <li>2. Plant native understorey species @ 6 / m2, up to 4m from the creek edge and scattered trees and shrubs. Robust in-stream species (e.g. Carex sp.) can be planted in the channel in an attempt to outcompete non-natives</li> <li>3. Annual spray / brush-cut grassy weeds and maintain plantings.</li> </ol>		High
5	<ul style="list-style-type: none"> <li>• Grassed edges. No native understorey.</li> </ul>	<ol style="list-style-type: none"> <li>1. Prepare site by spraying grassy weeds and then mulch or jute matt</li> <li>2. Plant native understorey species @ 6 / m2, up to 4m from the creek edge</li> <li>3. Annual spray / brush-cut grassy weeds and maintain plantings</li> </ol>		Low
6	<ul style="list-style-type: none"> <li>• In stream Crack Willows (x2) at west end</li> <li>• Curly Willow (x1)</li> <li>• Mature Pine trees</li> <li>• No native understorey</li> </ul>	<ol style="list-style-type: none"> <li>1. Cut and paint Willows. Remove debris once dead.</li> <li>2. Prepare site by brush-cutting and spraying introduced grasses. Install mulch or jute matt.</li> <li>3. Plant native understorey species @ 6 / m2, up to 4m from the creek edge and scattered trees and shrubs</li> <li>4. Annual spray / brush-cut grassy weeds and maintain plantings</li> </ol>	<ul style="list-style-type: none"> <li>• Retain Pines in the short term. Consider their removal and replacement in the long term.</li> </ul>	Medium

Section	Description / condition	Works	Other	Priority
7	<ul style="list-style-type: none"> <li>In stream Crack Willows (10 large, 13 small)</li> <li>No native understory</li> </ul>	<p>Stage 1:</p> <ol style="list-style-type: none"> <li>Cut and paint half of the Willows. Remove debris once dead.</li> <li>Prepare site by brush-cutting and spraying introduced grasses.</li> <li>Plant native understory species @ 6 / m2, up to 4m from the creek edge and scattered trees and shrubs</li> <li>Annual spray / brush-cut grassy weeds and maintain plantings</li> </ol> <p>Stage 2:</p> <ol style="list-style-type: none"> <li>Repeat for the remaining Willows following completion of Stage 1</li> </ol>		Medium
8	<ul style="list-style-type: none"> <li>Pohlman Street creek crossing</li> <li>Elms (x3)</li> <li>Crack Willows (x1 large, x1 small)</li> <li>Woody weeds present in drain</li> <li>No native understory</li> </ul>	<p>Over two years to stage visual impact:</p> <ol style="list-style-type: none"> <li>Cut and paint Elms. Remove / burn debris or mulch Elms and use to support plantings.</li> <li>Cut and paint woody weeds in drain.</li> <li>Plant mature trees to replace Willows</li> <li>Cut and paint Crack Willows. Remove burn debris.</li> <li>Prepare site by spraying grassy weeds and then mulch or jute matt</li> <li>Plant native understory species @ 6 / m2, up to 2m from the creek edge. Robust in-stream species (e.g. Carex sp.) can be planted in the channel in an attempt to outcompete non-natives</li> <li>Annual spray / brush-cut grassy weeds and maintain plantings</li> </ol>		High



Section	Description / condition	Works	Other	Priority
9	<ul style="list-style-type: none"> <li>Pohlman St entrance to Lions Park</li> <li>Hawthorn on north boundary</li> <li>Hawthorn hedge on west entrance from Pohlman Street</li> <li>No native understory</li> </ul>	<ol style="list-style-type: none"> <li>Cut and paint Hawthorn on north boundary. Remove / burn debris or mulch if not prone to reshooting.</li> <li>Prepare site by spraying grassy weeds and then mulch or jute matt</li> <li>Plant native understory species @ 6 / m2, up to 2m from the creek edge</li> <li>Maintain plantings</li> </ol>	<ul style="list-style-type: none"> <li>Retain Hawthorn hedge on Pohlman Street entrance in the short term. Consider removal in the long term.</li> <li>Hawthorns can be left in situ if poisoned and not impeding revegetation works as they can still be good habitat and provide good structure for climbing plants.</li> </ul>	Medium
10	<ul style="list-style-type: none"> <li>In-stream Crack Willows (x10)</li> <li>Elms (x16)</li> <li>Off-stream Crack Willow (x1)</li> <li>No native understory</li> </ul>	<p>Stage 1:</p> <ol style="list-style-type: none"> <li>Cut and paint half the Elms and Willows. Remove / burn debris once dead. Elms can be chipped and mulch used on site to support plantings.</li> <li>Prepare site by spraying grassy weeds and then mulch or jute matt</li> <li>Plant native understory species @ 6 / m2, up to 2m from the creek edge. Robust in-stream species (e.g. Carex sp.) can be planted in the channel in an attempt to outcompete non-natives</li> <li>Plant native trees and / or shrubs on north boundary to maintain privacy of adjoining property.</li> </ol> <p>Stage 2: Repeat for the remaining Willow and Elms following completion of Stage 1.</p>	<ul style="list-style-type: none"> <li>Negotiate with adjoining private landholder as woody weeds currently provided screening for their property</li> <li>Retain off-stream Weeping Willow provided it continues to not show signs of suckering or spread</li> </ul>	Very high
11	<ul style="list-style-type: none"> <li>Concrete channel</li> <li>Grassed verges</li> </ul>	<ol style="list-style-type: none"> <li>'Naturalisation' of creek environment including whole or partial removal of concrete, installation of rock boulders, establishment of chain of ponds.</li> <li>Prepare site by spraying grassy weeds and then jute matt</li> <li>Plant native understory species @ 6 / m2, up to 4m from the creek edge</li> </ol>		Very high

Section	Description / condition	Works	Other	Priority
12	<ul style="list-style-type: none"> <li>Concrete channel</li> <li>Blackberry</li> <li>Juvenile Crack Willows</li> <li>Oak saplings and scattered mature oaks</li> </ul>	<ol style="list-style-type: none"> <li>Spray Blackberry and follow up groom / mulch</li> <li>Cut and paint Oak saplings and juvenile Willows</li> <li>Remove concrete</li> <li>Prepare site by spraying grassy weeds and then jute matt</li> <li>Plant native understorey species @ 6 / m2, up to 4m from the creek edge</li> <li>Robust in-stream species (e.g. Carex sp.) can be planted in the channel in an attempt to outcompete non-natives</li> <li>Maintain plantings</li> </ol>	<ul style="list-style-type: none"> <li>Retain mature Oaks</li> </ul>	Medium
13	<ul style="list-style-type: none"> <li>Walkway along Main Road from Eco-therapy Park</li> <li>Dark and overgrown.</li> </ul>	<ol style="list-style-type: none"> <li>Remove a selection of the shrubs and trees to open up sight lines and create space and light.</li> </ol>		Medium
14	<ul style="list-style-type: none"> <li>Site extends from the bridge at the wets to the low, remnant blue stone wall to the east</li> <li>Mature Oak trees (x4)</li> <li>Juvenile and sapling Elms and Oaks</li> <li>Concrete channel (part)</li> </ul>	<ol style="list-style-type: none"> <li>Cut and paint juvenile and sapling Elms and Oaks. Woody debris can be chipped and used as mulch for planting</li> <li>Remove concrete</li> <li>Prepare site by spraying grassy weeds and then mulch or jute matt</li> <li>Plant native understorey species @ 6 / m2, up to 4m from the creek edge and native shrubs</li> <li>Maintain plantings</li> </ol>	<ul style="list-style-type: none"> <li>Retain mature Oaks</li> </ul>	Medium
15	<ul style="list-style-type: none"> <li>Eastern entrance from William Street</li> <li>Mature Crack Willows</li> <li>Treated Blackberry that has been mulched / groomed</li> <li>Redundant farm fencing within the reserve</li> </ul>	<ol style="list-style-type: none"> <li>Cut and paint Crack Willows. Remove debris.</li> <li>Prepare site by spraying or brushcutting grassy weeds</li> <li>Plant native understorey species @ 6 / m2, up to 4m from the creek edge and scattered trees and shrubs</li> <li>Maintain plantings</li> </ol>	<ul style="list-style-type: none"> <li>Remove redundant fencing</li> <li>Mark southern boundary with survey pegs or similar</li> </ul>	Medium

Section	Description / condition	Works	Other	Priority
	<ul style="list-style-type: none"> <li>Southern boundary not delineated</li> </ul>			
16	<ul style="list-style-type: none"> <li>Open, grassed detention basin.</li> </ul>	<ol style="list-style-type: none"> <li>Prepare discrete beds by spraying grassy weeds and then mulch</li> <li>Plant with scattered trees and native understorey species</li> </ol>	<ul style="list-style-type: none"> <li>No tree planning on embankment</li> </ul>	Low
17	<ul style="list-style-type: none"> <li>Open, grassed detention basin with some scattered trees.</li> </ul>	<ol style="list-style-type: none"> <li>Prepare discrete beds by spraying grassy weeds and then mulch</li> <li>Plant with scattered trees and native understorey species</li> </ol>		Low

## General requirements

- All woody weeds (Willows, Elms etc.) to be removed from site, except for 1 x Weeping Willow next to the toilet block in Lions Park. Consider contacting the Melbourne Zoo regarding opportunities to donate the Willow debris to the Elephants.
- Herbicide use and other weed control methods should be applied sensitively to avoid impacts to the waterway. Suitably qualified contractors should be engaged to undertake these works.
- All planted shrubs and trees should be staked and guarded for the first 2 to 3 years. Tree guard removal to be undertaken once plants have outgrown guards (progressive).
- Treated woody weeds can be mulched on-site and used as a weed suppressant around plantings. Large, continuous, flat sections of plantings can have jute matting rolls applied (with 6 slits per square metre) and areas that are uneven or on the bank slopes can just have singular jute squares per plant

# Photos

## Section 1



## Section 2



### Section 3



### Section 4



# Section 5



# Section 6



# Section 7



# Section 8



# Section 9



# Section 10





# Section 11



# Section 12



# Section 13



# Section 14



**Section 15**



**Section 16**



**Section 17**



# Revegetation species list

(Courtesy of Dean Platt, Tree Wishes)

Plant form	Common Name	Scientific Name	Approx. numbers/ha
<b>Frontage Area – back from bank</b>			
Trees and large shrubs	Manna Gum	<i>Eucalyptus viminalis</i>	100
	Blackwood	<i>Acacia melanoxylon</i>	
	Black Wattle	<i>Acacia mearnsii</i>	
	Drooping She-oke	<i>Allocasuarina verticillata</i>	
Medium shrub	Tree Violet	<i>Melicytus dentatus</i>	100
	Hedge Wattle	<i>Acacia paradoxa</i>	
	Kangaroo Apple	<i>Solanum</i> sp.	
Low shrub	Common Rice Flower	<i>Pimelea humilis</i>	20
	Grey Parrot-pea	<i>Dillwynia cinerascens</i>	
	Hop Goodenia	<i>Goodenia ovata</i>	
Climber/Creeper	Small-leaved Clematis	<i>Clematis microphylla</i>	10

	Creeping Bossiaea	<i>Bossiaea prostrata</i>	
	Nodding Saltbush	<i>Einadia nutans</i>	
Tussock graminoid	Common Tussock-grass	<i>Poa labillardieri</i>	800
	Spiny-head Mat-rush	<i>Lomandra longifolia</i>	
<b>Channel Area - bed and bank</b>			
Tree	Swamp Gum	<i>Eucalyptus ovata</i>	50
	Blackwood	<i>Acacia melanoxylon</i>	
Medium shrub	Woolly Tea-tree	<i>Leptospermum lanigerum</i>	200
	Tree Violet	<i>Melicytus dentatus</i>	
	Sweet Bursaria	<i>Bursaria spinosa</i>	
Large herb	Slender Knotweed	<i>Persicaria decipiens</i>	50
Tussock graminoid	Tassel Sedge	<i>Carex fascicularis</i>	1500
	Tall Sedge	<i>Carex appressa</i>	
	Common Tussock-grass	<i>Poa labillardierei</i>	
	Common Reed	<i>Phragmites australis</i>	
	Spiny-head Mat-rush	<i>Lomandra longifolia</i>	
	Rush	<i>Juncus</i> sp.	



# Romsey Five Mile Creek Masterplan

## Summary of community consultation

### Consultation Activities

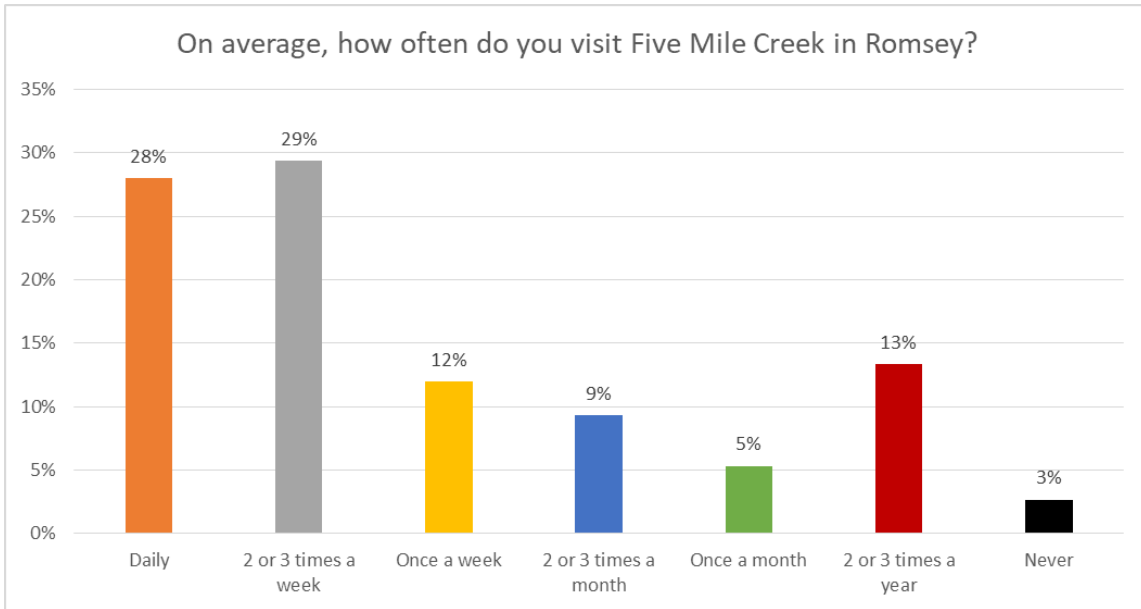
- **Direct mail** - 381 Letters sent to surrounding residents with feedback form and reply paid envelope
- **Facebook posts (x2)** – 17 & 20 May 2019 reaching 168 and 1,823 people respectively
- **Signs on site (x4)**
- **Posters and displays** – Installed at Verdure Café and Romsey Community Hub
- **Website** – Information and link to online Feedback Form
- **Media release** – sent to local newspapers
- **Drop in sessions** - Sunday, 19 May 2019, 10am to 12noon at the Lions Park
- **Stalls outside IGA** – Sunday, 11 May 2019

### Submissions received

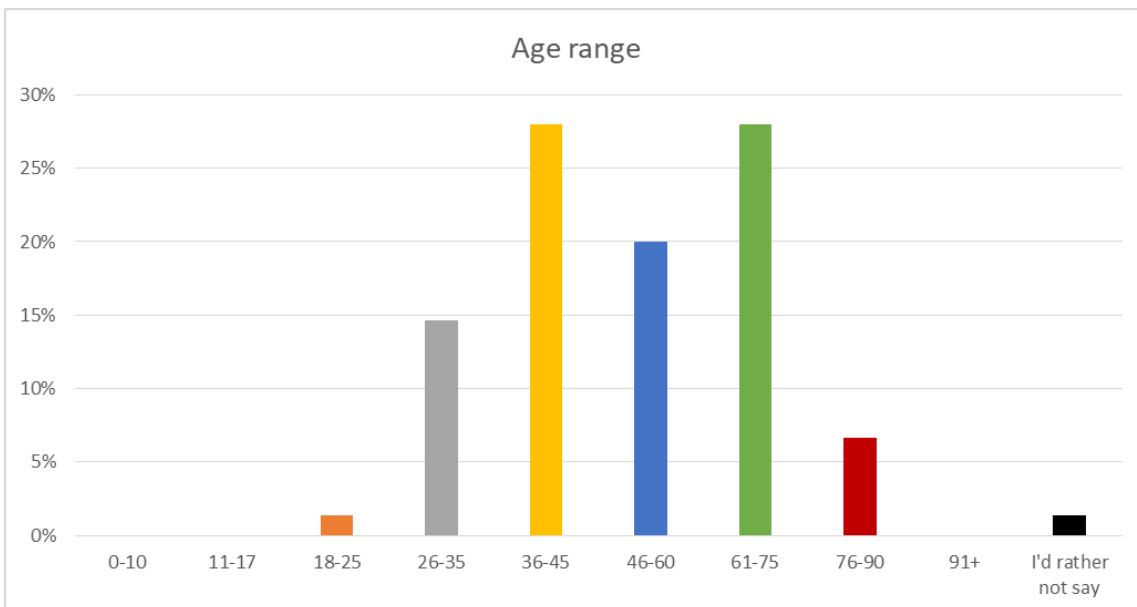
- 76 feedback forms (online and hard copy)
- 6 written submissions
- 6 comments on Facebook

## Summary of feedback

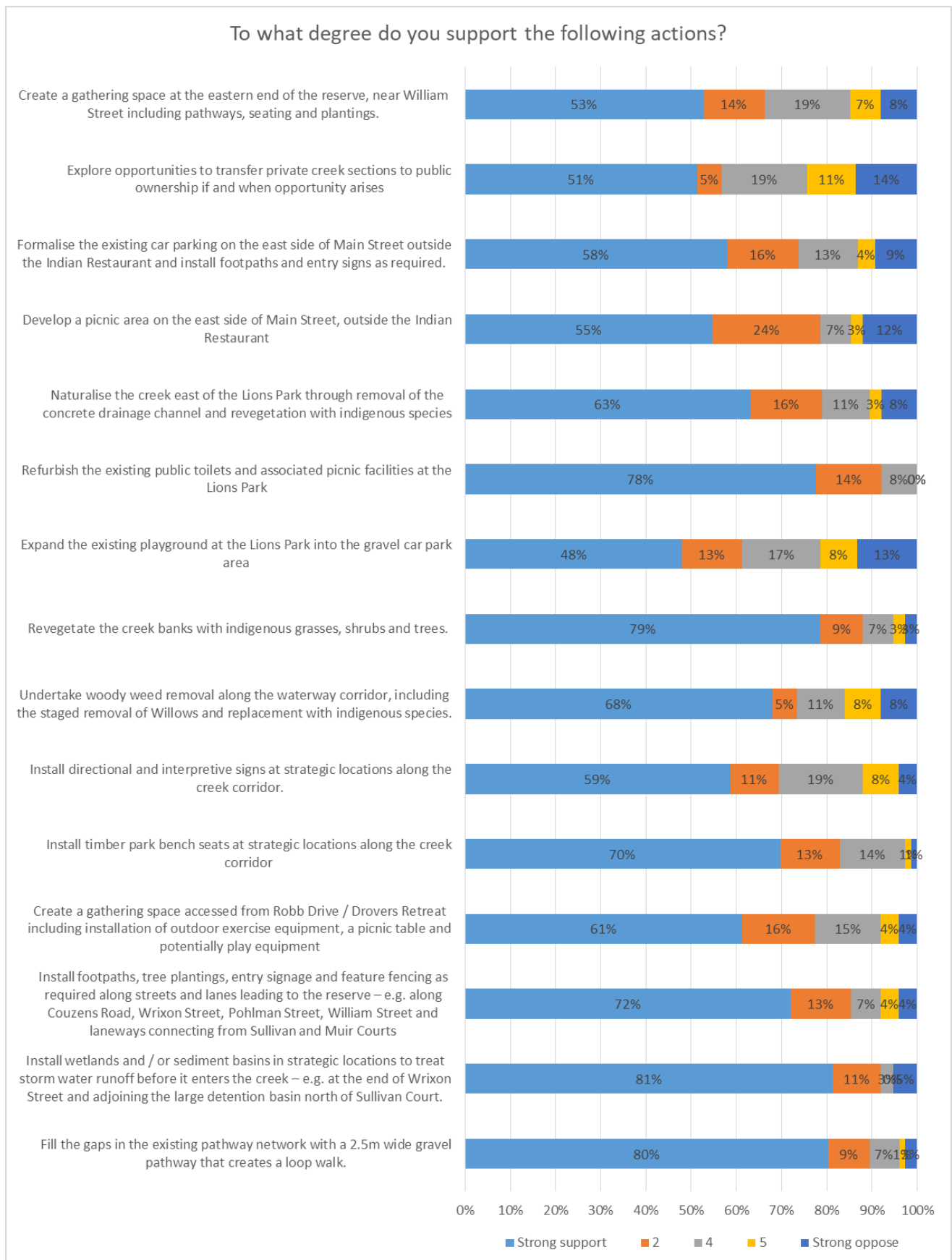
### Feedback form – visitation rate of respondents



### Feedback form – age range of respondents



## Feedback form – level of support for different actions proposed





## **Key comments from feedback form, submissions and on Facebook**

### Support for the plan

- Various comments of support for the Masterplan and thanks and congratulations to the volunteers involved.
- One comment that the Masterplan should not be a high priority compared to other areas of Romsey

### Creek bed / channel

- Concern about silt / gravel in the creek (x2)
- Ensure any creek naturalisation does not deepen the creek channel – i.e. to protect the creek's floodplain connectivity

### Traffic and car parking

- Concern about congestion at the Murphy Street / Main Street intersection.
- The area outside the Indian Restaurant should be parking for the restaurant
- Request for car parking near the Drovers Retreat gathering space
- Support for gathering space near Drovers Retreat as opposed to near the actual creek
- Consider installing a pedestrian crossing across Main Street at Robb Drive / Palmer Street.
- Support to remove the gravel car park adjoining the Lion's Park provided it does not compromise parking for the Wine Bar or the Lions Park

### Willows and Pines

- Concern that removing the willows will increase flooding downstream (x2) and could impact the breeding of fish and crayfish.
- The large Weeping Willow in the Lions Park should be retained
- Comment that the Willows at the end of Wrixon Street seem to be holding the banks together
- The Willows are part of the history of Romsey and provide shade
- The Willows add charm and are pretty (x2)
- Suggestion to keep the Monterey Pines
- Support for removal of non-indigenous trees, particularly the Willows
- Support for removal of the old Pine trees which will become dangerous
- Concern about previous removal of Willows at the end of Roger Street which removed shade
- Support for the gradual removal of the willows and replacement with natives

### Revegetation

- Some indigenous grasses look like weeds and are not attractive
- Concern about flooding resulting from revegetation of creek banks
- Retain the swampy areas and plant with Swampy Woodland vegetation. Do not drain them
- Consider plantings that create shade around the seats and tables
- Consider providing habitat and food sources for small birds, reptiles and mammals
- Consider shade at the Robb Drive / Drovers Retreat gathering space
- Plant bulbs
- Support for trees to be planted on Sullivan Court
- Support for native species that attract birds
- Support for colourful exotic trees and preservation of the ornamental pears

#### Private creek sections

- High priority section to incorporate into a reserve is west of Couzens Lane to Glenferd Road. Lower priority should be given to the section east of William Street. The section from Palmer St to Tickawara may be worth looking at.
- No support for buy back scheme of private creek from property owner on Stuartfeld Avenue.
- Support for buy-back of private creek sections to create a continuous trail.

#### Signs and promotions

- Request for signage along the creek naming the site as a “nature reserve”
- Install tourist signs at the Lions Skate Park and toilets to direct visitors to the creek
- Use websites and advertising to promote the creek corridor
- Request for the directional signs to include the Eco-therapy Park
- Support for standardised signs

#### Lighting

- Request for solar lighting along pathway (x6)

#### Pathways

- The gravel path from Muir and Sullivan Court to Five Mile Creek is in disrepair
- The Sullivan Court and Wrixon Street entries would be a good place to start the pathway works
- Concern about additional foot traffic behind respondent’s property (address not specified).
- Request to include a bike path (x2)
- Retain access from Sullivan Court
- Preference for concrete footpaths where possible
- Any new pathways will need to be raised to prevent them from washing away
- Support for a loop path (x2)
- Connections to the Cobaw Health site is essential
- Preference for bitumen pathway on the north side of the creek

#### Bins

- Provide bins (x6)

#### Playgrounds

- Request for more playground equipment at the Lions Park
- Support for playground equipment and the gathering spaces
- Consider moving the Lions Park playground further west, rather than remove car parking
- There is no need for playgrounds other than at the Lions Park

#### Picnic facilities, seats and other recreation infrastructure

- Request to refurbish the picnic tables at the Lions Park
- Consider installing a gazebo or band stand near the Indian restaurant.
- Benches should be made from a combination of wood and steel, similar to the Rotary benches along the creek.
- Request to remove the graffiti from the bridge over the creek.
- Suggestion to install drinking taps for people and dogs
- Consider re-installing BMX humps along the creek
- Ensure open space areas are suitable for community events and gatherings

- Suggestion not to develop the east side of the creek and retain the “rustic feel”
- Prioritise completion of the Ecotherapy Park ahead of new gathering spaces on William Street.
- Any timber bench tops should be FSC / PEFC certified timber
- Consider recycled plastic or tyre materials for the seats and tables
- Paint the footbridge crossing the creek near Main Street
- Support for seating / benches
- Support for seating consistent with the bush setting
- Seating should not be benches as they are uncomfortable and do not meet universal design.
- No need for a gathering space at the Robb Drive end as this location is too close to houses.
- Support for upgrading facilities near the Indian restaurant.

#### Lions Park toilets

- Question about whether additional upgrades are required as they were recently refurbished

#### Eco-therapy Park

- Update the plan to reflect that the Romsey Eco-therapy Park is not a children’s playground and is not called the Cobaw Health playground.
- The plans should acknowledge the future upgrades proposed to the Eco-therapy Park (including BBQs and picnic facilities) and provide pathways and links to it
- Importance of ensuring the creek corridor is differentiated from the Eco-therapy Park

#### WSUD

- Creating some ponds adjoining the creek will provide space for storm water and prevent flooding during high flows
- Promote rain gardens on private properties to reduce stormwater run-off.

#### Fencing

- Support for fencing along the Lions Park road frontage, preferably to match the Eco-therapy park
- Consider working with the owner of the horse paddock near Robb Drive / Pohlman St to replace the chain link fence.
- Financial support may be required for private property owners next to new pathways to enable them to upgrade their fences

#### Flooding

- Concerns regarding flooding and engineering
- Concerns that removing the concrete channel will result in flooding

#### Dam up stream

- Suggestion to remove the dam on upstream property.

#### Art, murals and memorials

- Suggestion to install a mural on the walls of the Lions Park toilet block
- Engage local youth to create artwork – e.g. a mural on the toilet
- Consider raising funds through the community and having donor names etched into fence posts
- Consider installing plaques beneath newly planted trees commemorating families who make a financial contribution

### Heritage

- Consider a “historic overlay” and signage along the creek – e.g. for the old swimming pool and butter and dairy buildings.
- Support for retaining and accentuating the old swimming pool (x2)
- Retain the name “Five Mile Creek” for historical importance.

### Dogs

- Will dogs be allowed off lead? (x3)
- A dog off lead area at the detention basin near Sullivan Course would be good (x2)
- Provide dog poo bags (x5)
- Ensure upgrades are mindful of dog walkers
- Dogs should be required to be on lead

Dogs will be considered in line with Council’s dog on and off leash areas policy.