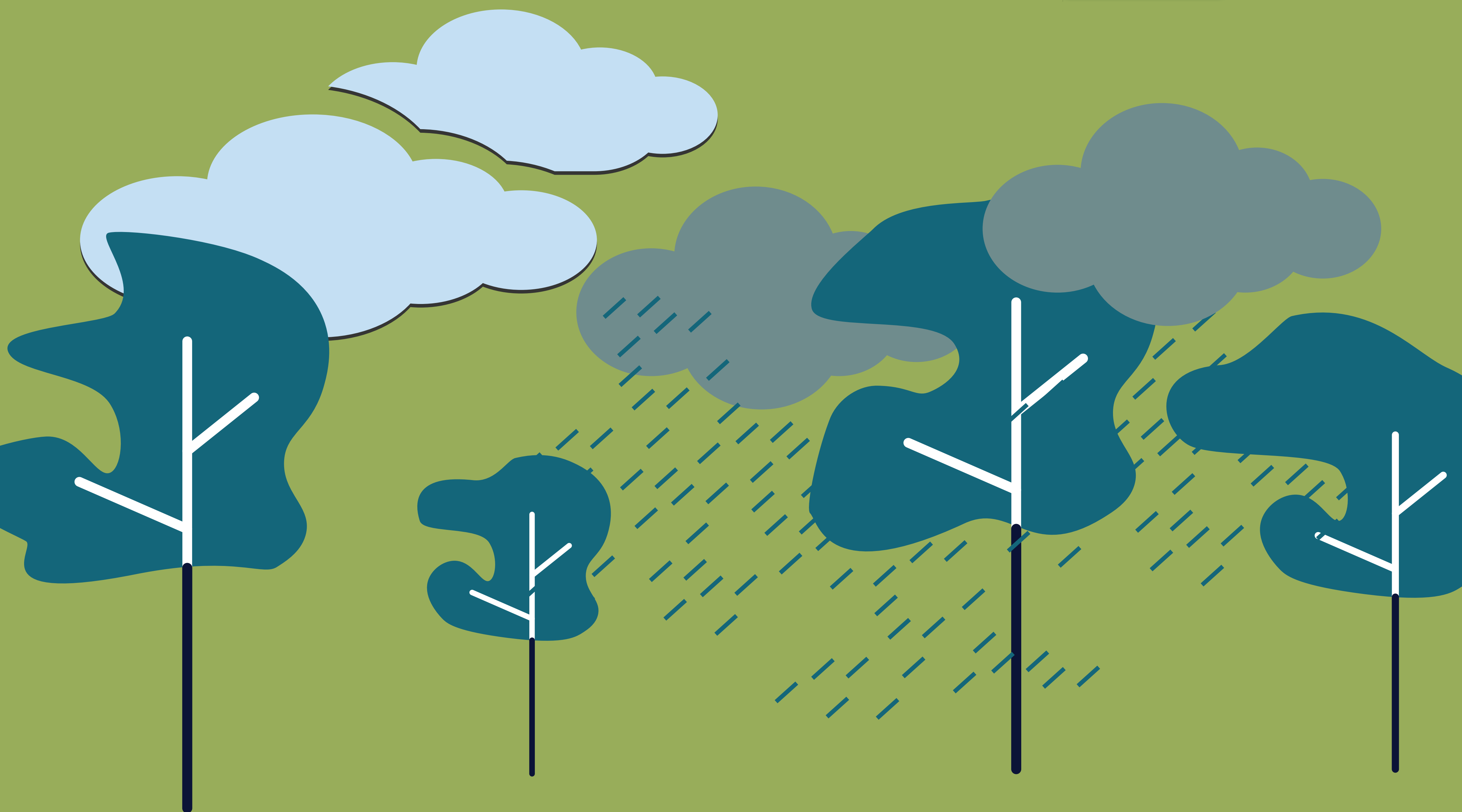
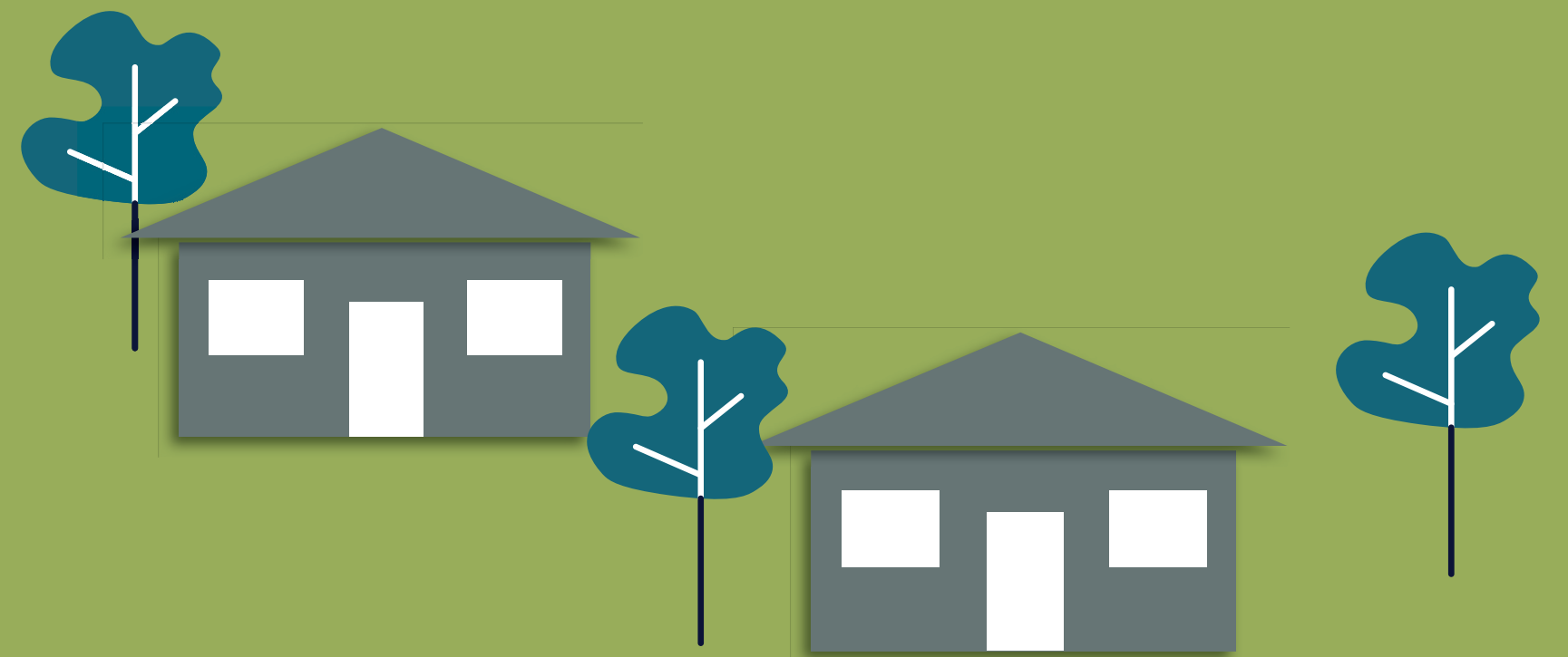




Romsey Structure Plan





Romsey Structure Plan

What is a structure plan?

A structure plan is a long-term plan developed with the community and stakeholders to manage the future of a specific area through a development framework.

Romsey is a township anticipated to grow from a district town (6,000 people) to a large district town (10,000 people) to 2036. The structure plan is required to provide direction to manage sustainable development of the township which defines its unique character, facilitates orderly growth, enlivens the town centre, strengthens the local economy, protects the unique environmental qualities and builds community resilience.

A settlement boundary should identify and protect any land required for future urban expansion and be used to help preserve and protect features of rural land and natural resources and features. Sufficient land should be provided to meet forecast demands by accommodating projected population growth over at least a 15 year period with clear directions on locations where growth should occur.



Acknowledgement

Macedon Ranges Shire Council acknowledges the Dja Dja Wurrung, Taungurung and Wurundjeri Woi Wurrung Peoples as the Traditional Owners and Custodians of this land and waterways. Council recognises their living cultures and ongoing connection to Country, and pays respect to their Elders past and present.

Council also acknowledges local Aboriginal and/or Torres Strait Islander residents of Macedon Ranges for their ongoing contribution to the diverse culture of our community.

Emerging Options Paper

The Emerging Options Paper provides further information to support the development of the new Structure Plan for Romsey. The Romsey Structure Plan will replace the current Romsey Outline Development Plan which sets directions for the town to 2021. The Structure Plan will determine the settlement boundary as required under the Macedon Ranges Statement of Planning Policy.

These posters present a summary of the Emerging Options Report. To read the full report visit:

<https://www.mrsc.vic.gov.au/yoursay>

A draft vision and objectives to guide the structure plan are presented based on community feedback. Information from the Issues and Opportunities Paper and further work for the Emerging Options Paper is presented along with their implications for the settlement boundary. Potential actions for the structure plan are also outlined.

Settlement options are presented along with an assessment of the advantages and disadvantages of each through examining the economic, social, and environmental implications. Potential options are presented for residential growth, commercial growth and industrial growth.

What the community have already told us:

Consultation undertaken in relation to the Issues and Opportunities Paper identified the following key issues and ideas to be addressed in the future Romsey Structure Plan.

Town Centre and Local Employment

The town centre requires support to re-invigorate its attraction as a vibrant place. There is a need for the town centre to reinvent itself to better support the existing community's needs.

Five Mile Creek

The creek corridor is a valued asset within the Romsey community that meanders through the northern region of the township. Accessibility and linkages to the corridor need improvement to enable residents to better interact with and utilise the open space.

Housing Diversity

Greater housing diversity within the town is required to provide alternate living opportunities to all residents with options for people to have access to a diverse range of housing styles.

Servicing and Utilities

The current service offering such as gas, sewer, telecommunications, etc., within Romsey needs substantial upgrades to support both the existing and future community.

Public Transport

Greater investment in the public transport offering is required to encourage the community to utilise public transport. Improvements in service frequency and bus and train integration is needed to lessen the car dependence of Romsey residents.

Walking and Cycling

Footpath and shared path infrastructure needs improvement to encourage residents to utilise alternate modes of transport for their health and wellbeing. New links to the footpath and cycle network have been identified.

Education and Community Facilities

Need for a local secondary college and local aquatic/gym facilities were considered of high importance given the reliance on services outside of the township.

Draft vision and objectives - What do you think?

Draft Vision

Romsey will be a rural township, building on its long and celebrated history as an attractive and affordable place, providing a range of housing types and excellent facilities and services to support the community today and into the future.

The town's heritage and rural appeal is maintained through large open spaces, linear creek corridors, trees, landscapes, views to the surrounding countryside, good recreational facilities and enhanced heritage places.

A vibrant town centre, thriving commercial and industrial areas, improved public spaces and better connectivity has enhanced the sense of community with greater employment opportunities, while transport infrastructure ensures that residents can continue to enjoy the benefits of the township's rural location.

Draft Objectives (to support the Vision)

- Objective:** *To maintain the setting of Romsey as a township within a rural landscape.*
- Objective:** *To ensure development is appropriate to the township character.*
- Objective:** *To create a more sustainable and resilient township.*
- Objective:** *To create additional and appropriate housing, jobs and activity in the township with a vibrant town centre and employment areas.*
- Objective:** *To ensure the township provides community infrastructure to meet the social and cultural needs of its residents.*
- Objective:** *To ensure residents are provided with a variety of movement options that are safe, accessible, integrated and do not rely on vehicle ownership within the township.*

Have your say

Do the vision and objectives align with your ideas for Romsey's future?