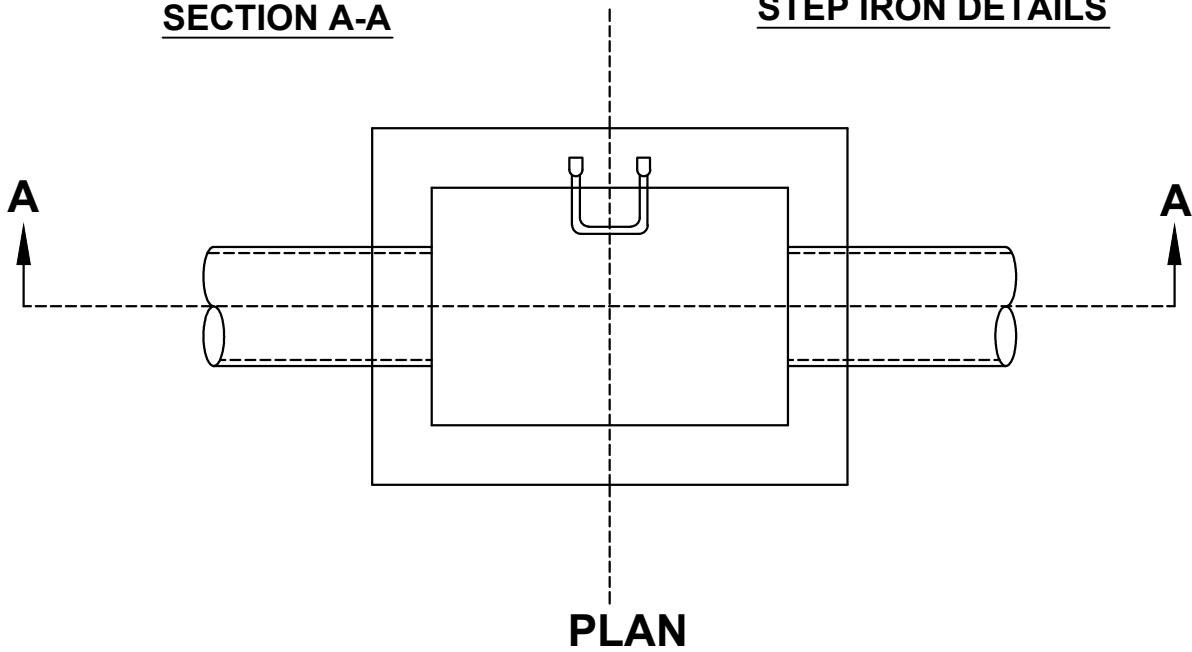


**SECTION A-A**

**STEP IRON DETAILS**



**PLAN**

**NOTES:**

1. STEP IRON TO BE 22mm DIA. MILD STEEL BARS GALVANISED OR TREATED WITH APPROVED ALTERNATIVE
2. PITS DEEPER THAN 1000mm TO BE FITTED WITH STEP IRONS
3. FIRST STEP TO BE 650mm BELOW TOP OF PIT
4. STEP IRON TO BE SPACED AT 300mm CRS. WITH LOWEST STEP IRON NOT MORE THAN 450mm ABOVE PIT FLOOR
5. STEP IRONS TO BE PLACED IN WALL WHICH IS CLEAR OF OPENING



**STEP IRONS**  
(Not To Scale)

DRAWN BY:  
C.B.

CHECKED : L.T

DATE:  
05.04.13

SD 021

REVISION	DATE	APPROVED
1.	6.06.2008	J.G.
2.	5.04.2013	L.T.
3.		